

# OFFSHORE WIND ENERGY AND BENTHIC HABITAT CHANGES

Lessons from Block Island Wind Farm

By Zoë L. Hutchison, Monique LaFrance Bartley, Steven Degraer,  
Paul English, Anwar Khan, Julia Livermore, Bob Rumes, and John W. King



**ABSTRACT.** The Block Island Wind Farm (BIWF), situated offshore of Block Island, Rhode Island, is the first commercial offshore wind farm (OWF) in the United States. We briefly review pre-siting studies, which provide contextual information about the benthic habitats and fish in the Block Island Sound area before the BIWF jacket foundations were installed in 2015. We focus on benthic monitoring that took place within the BIWF. This monitoring allowed for assessments of spatiotemporal changes in sediment grain size, organic enrichment, and macrofauna, as well as the colonization of the jacket structures, up to four years post-installation. The greatest benthic modifications occurred within the footprint of the foundation structures through the development of mussel aggregations. Within four years, changes in benthic habitats (defined as biotopes) were observed within the 90 m range of the study, clearly linked to the mussel-dominated colonization of the structures, which also hosted numerous indigenous fish species. We discuss the evident structural and functional effects and their ecological importance at the BIWF and for future US OWFs, drawing on similarities with European studies. While reviewing lessons learned from the BIWF, we highlight the need to implement coordinated monitoring for future developments and recommend a strategy to better understand environmental implications.

## INTRODUCTION

Offshore wind has proven to be a valuable source of clean energy, particularly in Europe, where over 75% of the global capacity is installed (GWEC, 2019). In 2019, China and the United States were the greatest contributors of new wind installations (onshore and offshore combined), and with 15 offshore leases, the United States has potential as a strong contributor to the future offshore wind industry (BOEM, 2019; GWEC, 2019).

Located 4.5 km from Block Island, Rhode Island, the Block Island Wind Farm (BIWF) is the first commercial offshore wind farm (OWF) in the United States. The BIWF consists of five jacket-foundation turbines (150 m tall, 15,000 tons, 150 m rotor diameter, 30 MW total capacity) spaced approximately 1 km apart. The foundations were installed by mid-2015, and the facility became operational in late 2016, primarily supplying power to Block Island, with excess power transmitted to the mainland via a 34 km subsea export cable (HDR, 2019).

To understand the environmental effects of OWFs, the US Department of the Interior Bureau of Ocean Energy Management (BOEM) initiated the Real-

Time Opportunity for Development Environmental Observations (RODEO) program in 2015. Thus, evaluation of the effects of early OWFs can inform management about how to avoid or mitigate impacts of future facilities and how to prioritize future monitoring efforts. The BIWF provided the first opportunity in the United States to evaluate the intensity, duration, and spatial scale of perceived impacts. During the construction and/or operational phases, assessments of sediment disturbances, sound emissions, visual disturbances, and effects on the benthic environment were made (e.g., HDR, 2019, 2020a,b). Here, we focus on the RODEO benthic monitoring effort during the initial operational phase and report on the effects of the BIWF on benthic ecology within four years post-construction (late 2016 to late 2019). This relatively short-term monitoring aimed to evaluate near-field spatiotemporal changes in sediment grain size, organic enrichment, and benthic macrofauna due to the presence of the BIWF foundations. This effort later expanded to evaluate the benthic changes occurring closer to and under the foundation structures and the colonizing community on the structures.

We first provide a contextual overview of benthic ecology and related fish patterns in the broader area of Block Island Sound (BIS). We then briefly describe the RODEO benthic monitoring effort at the BIWF and highlight benthic changes observed. These changes and their potential ecological importance are discussed with respect to their cascading effects and relevance to managed species. The overarching lessons learned from the implementation of the RODEO benthic monitoring effort provide insights that can guide recommendations for future efforts. We conclude by drawing parallels with European OWF environmental monitoring regimes, providing possible paths forward for future US OWF monitoring efforts.

## BENTHIC ECOLOGY OF BLOCK ISLAND SOUND

BIS is an ecologically and socioeconomically important area, and to help select an appropriate site for the BIWF, the Rhode Island Ocean Special Area Management Plan (OSAMP; CRMC, 2010) was developed. As part of this multidisciplinary effort, the benthic ecology, habitats, and fishery resources of BIS and Rhode Island Sound (RIS) were characterized (Malek et al., 2010; LaFrance et al., 2014). We briefly review the knowledge gained, focusing on the benthic ecology and demersal fish of BIS to provide context for the broader BIS area prior to the BIWF.

The pre-siting OSAMP study mapped benthic habitats within a 138.6 km<sup>2</sup> area of BIS (LaFrance et al., 2014). Water depth in this area ranges from 13–44 m. The seafloor was found to be a heterogeneous environment, consisting of five glacial depositional environment types (moraine shelf, inner shelf moraine, delta plain, alluvial fan, lake floor basin) and a range of seabed types (flat/featureless areas, sheet sands, sand waves, small dunes, boulder fields). The area was generally described as a coarse sediment environment with medium to very coarse sands dominating, though areas of finer

sediments were recorded. Generally, benthic macrofauna communities were dominated by amphipods, polychaetes, and bivalves. The macrofauna community composition in BIS was influenced by mean water depth, benthic surface roughness, geological features, and sediment types at fine and/or broad scale resolutions (LaFrance et al., 2014). The Coastal and Marine Ecological Classification Standard (CMECS; the US standard) was

used to describe biological and physical characteristics and to define habitats referred to as biotopes (FGDC, 2012). Within the OSAMP BIS study area, 12 distinct biotopes were identified (Figure 1, which also identifies the BIWF site; LaFrance et al., 2014).

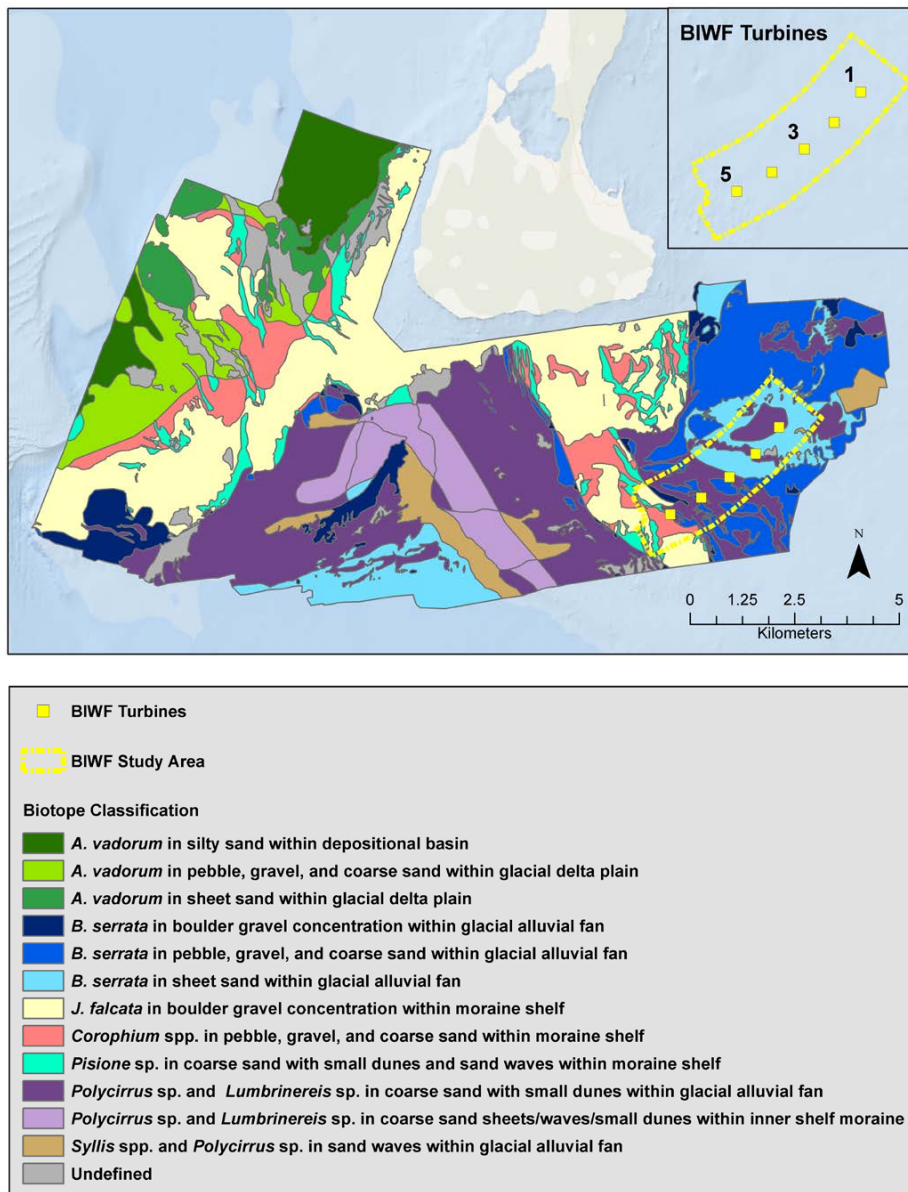
The pre-siting OSAMP study also highlighted that the benthic habitat heterogeneity and associated prey species played a role in driving demersal fish pat-

terns (Malek et al., 2010; Kritzer et al., 2016). Both the demersal fish assemblage and stomach contents of fish were dependent on the geographical location and benthic habitat where fish were caught (Malek et al., 2010). Compared to the neighboring RIS, BIS had lower fish species abundance and biomass possibly due to lower primary production; however, BIS had greater species diversity, likely due to greater habitat complexity (Malek et al., 2010; Nixon et al., 2010). In addition to benthic habitat heterogeneity, the demersal fish community was influenced by water depth (Malek et al., 2010). Generally, communities with more even species distribution and greater abundance and biomass were found in deeper waters, while lower density yet more diverse communities occurred in shallow waters. Overall, the heterogeneous benthic habitats of BIS support a rich diversity of fish species important to both recreational and commercial fishing communities (Malek et al., 2010).

## POST-CONSTRUCTION RODEO MONITORING STRATEGY AT THE BIWF

### The Monitoring Effort

The RODEO benthic monitoring program was completed over three sampling years spanning four calendar years after the BIWF foundations were installed (from late 2016 to late 2019). This program was initially designed in 2015 based on strategies and key findings from monitoring programs and studies in Europe. At that time, there was some evidence of sediment fining, organic enrichment, and benthic macrofaunal changes close (<15 m) to gravity devices and monopiles (Wilhelmsson et al., 2006; Coates et al., 2014). However, information regarding effects surrounding jacket structures was more limited (Schröder et al., 2006; Krone et al., 2013). Observations of epifouling on gravity, monopile, and jacket turbine foundations (Schröder et al., 2006; Emu Limited., 2008; De Mesel et al., 2015) suggested considerable quantities of additional biomass could be introduced to



**FIGURE 1.** Benthic biotopes within the Block Island Sound study area (138.6 km<sup>2</sup>). Twelve biotopes were identified during preparation of the Rhode Island Ocean Special Area Management Plan (LaFrance et al., 2014). The inset, with turbine positions shown, delineates the Block Island Wind Farm (BIWF) study area for the benthic monitoring that took place as part of the US Department of the Interior Bureau of Ocean Energy Management monitoring program called Real-Time Opportunity for Development Environmental Observations (RODEO).

offshore areas. Foundations were proposed as biomass “hotspots” with potentially high exports to local areas (Krone et al., 2013). Additionally, benthic ecological changes linked to enrichment effects were well documented around some fixed oil and gas structures in the United States and Europe (Wolfson et al., 1979; Page et al., 1999; Manoukian et al., 2010), although these structures are much larger.

The RODEO benthic monitoring program therefore originally aimed to detect the presence of any measurable close-range spatiotemporal differences in sediment composition, organic content, and/or benthic macrofaunal communities (HDR, 2020a). The primary sampling effort was later supplemented with data collection using scientific divers in years 2 and 3 (Box 1) to allow further benthic data collection closer to and under the structures, as well as characterization of the community colonizing the structures. Overall, the monitoring program was iterative in its design and expanded to examine aspects of the three-dimensional benthic effects that OWFs have on the ecosystem.

The primary data, collected within 30–90 m of each of the three turbines targeted for sampling (Box 1), were used to classify benthic biotopes according to CMECS (FGDC, 2012). The geological environments defined by the OSAMP (LaFrance et al., 2014) have been stable over space and time, and accurate within tens of meters, and therefore were used to define biotope boundaries for the RODEO study (Steimle, 1982; LaFrance et al., 2014; HDR, 2020a). The methods informing the CMECS classification and subsequent analyses were identical to the OSAMP study and were repeated each RODEO sampling year. While the sampling regimes for the BIWF and BIS study areas were conducted on different spatial scales (site-specific versus regional, respectively), subjecting the data to identical analyses and using CMECS as a common language permitted comparisons to be made. Additionally, direct comparisons between years of the RODEO mon-

## BOX 1. THE RODEO BENTHIC MONITORING METHODS AT A GLANCE

### Sampling regimes targeted BIWF Turbines 1, 3, and 5

#### PRIMARY SAMPLING EFFORT (YEARS 1, 2, 3)

- Focused on the near-field area (30–90 m from the center point of the foundations)
- Randomized sampling stratified within near, intermediate, and far distance bands (30–49 m, 50–69 m, and 70–90 m, respectively)
- Samples also collected within three control sites representative of comparable biotopes defined from the OSAMP map (Figure 1; LaFrance et al., 2014)
- Benthic grab sampler collected surficial sediment for analysis of grain size, organic enrichment, and benthic macrofauna
- Macrofauna identified to species level where possible, assessing abundance, species richness, and community composition; biomass was an additional metric in year 3
- GoPro video camera deployed with grab sampler for broader contextual information of the seabed
- Data collected allowed biotope classification according to the CMECS framework (FGDC, 2012) for the areas 30–90 m from the turbine center each year
- Further statistical comparisons drawn between turbines, turbine and control areas, and distance bands
- High-resolution seabed photography obtained along drifting transects (Roman et al., 2011)

#### SUPPLEMENTAL SAMPLING EFFORT (YEARS 2, 3)

- Introduced in year 2 and further expanded in year 3
- Focused on the area <30 m from the foundation center using scientific divers for sample collection
- Manual seabed sampling to collect equivalent grab samples underneath the foundations (footprint) and in the very near-field area immediately outside of the structures
- Sample processing similar to above (sediment grain size, organic enrichment, and benthic macrofauna), with analyses focused on differences between turbines
- CMECS biotope classification was not applied to data
- Assessed epifaunal colonization on the turbine foundations using vertical video profiles of jacket structure legs (percent cover) and epifaunal samples for more detailed species identification
- Fish visible in the vertical video profiles were recorded, supplemented with scientific diver reports from each dive
- High resolution seabed photography (Roman et al., 2011) obtained as diver-towed transects capturing the footprint area and up to 90 m from the center of the turbine

The primary monitoring effort was typically completed in fall and winter while the supplemental monitoring effort with divers was typically completed in spring through fall. The three sampling years were; 1: 2016–2017; 2: 2017–2018; 3: 2019.

itoring data provide insight on the local spatiotemporal changes occurring as a result of the BIWF.

### Benthic Changes at the BIWF

The greatest benthic changes have occurred on or within the footprints of the jacket structures four years post-installation. HDR (2020a) provides a full account of the results.

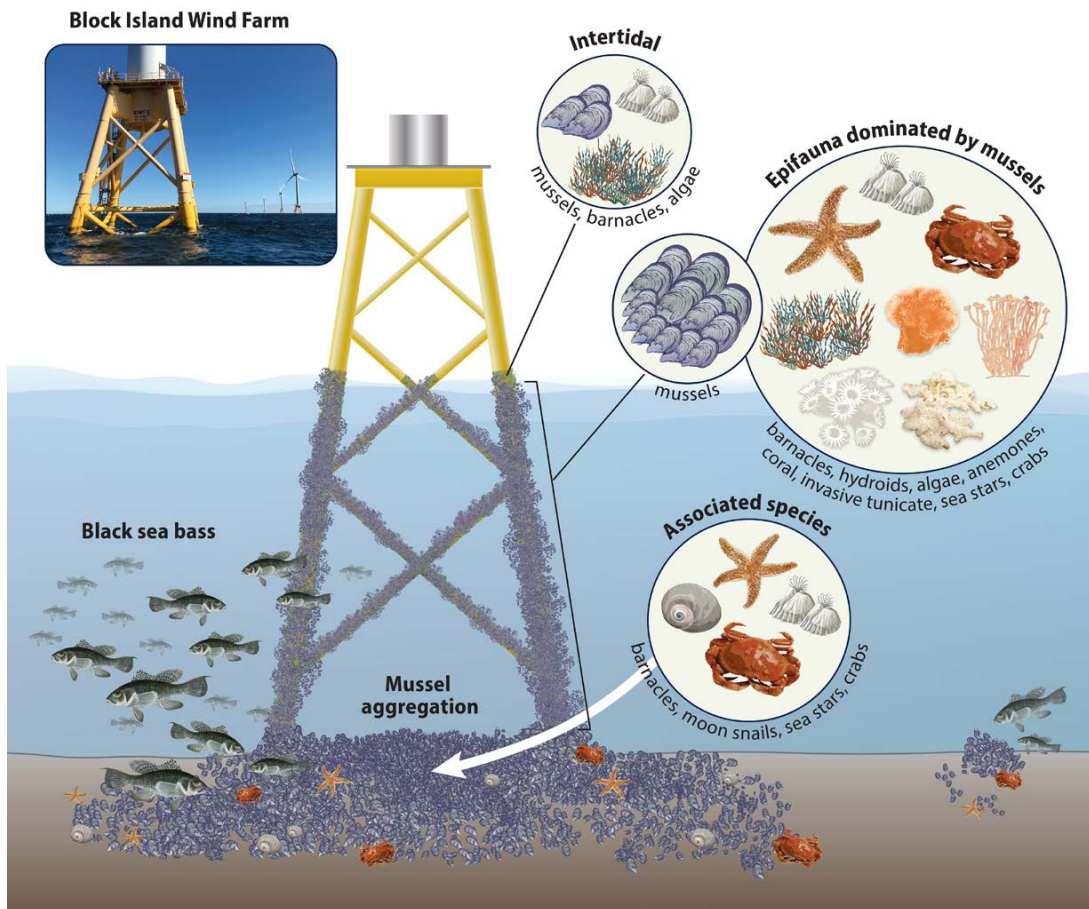
All submerged parts of the foundation structures studied were colonized by epifauna dominated by the blue mussel (*Mytilus edulis*) along their full vertical extents (Figure 2). Other epifauna species were present in comparatively lower coverage, including hydroids, algae, sponges, and anemones such as *Metridium senile*. Additional species identified and common to the region included the widespread nonindigenous invasive tunicate *Didemnum vexillum* and the indigenous coral *Astrangia poculata* (Valentine et al., 2009; Grace, 2017). Within the footprint of

Turbine 1, mussel aggregations estimated to be up to 50 cm deep developed on the seabed and foundation grate, while aggregations within Turbines 3 and 5 exhibited lesser spatial coverage and density and took longer to appear (Figure 3). Multiple abundant predators associated with the mussel communities included moon snails (Naticidae), crabs (*Cancer* sp.), and sea stars (*Asterias forbesi*).

Over time, there was also a notable increase in black sea bass (*Centropristis striata*) around the structures, estimated to exceed 100 individuals per turbine in year 3 (Figure 4). Scientific divers also reported the frequent presence of Atlantic striped bass (*Morone saxatilis*) schooling at the base of the turbines, bluefish (*Pomatomus saltatrix*) observed in midwater around the turbines, scup (*Stenotomus chrysops*) at the base of the structures, and occasional schools of dogfish (*Squalus acanthias*). In addition, rock gunnells (*Pholis gunnellus*) made use

of the mussel habitat, and a monkfish (*Lophius americanus*) was resident at one of the turbines.

Within the 30–90 m distance bands, no strong gradients of change in sediment grain size, enrichment, or benthic macrofauna were observed at the turbines investigated. Within this area, Turbines 3 and 5 had the most stable biotopes, dominated by polychaetes (Figure 5). Across all three sampling years, the Turbine 3 biotope was classified as *Polycirrus* spp. in coarse sand with small dunes within glacial alluvial fan. The Turbine 5 study area was the most heterogeneous, with three different biotopes. One biotope, *Polycirrus* spp., in pebble, gravel, and coarse sand within moraine shelf, remained stable over the study period. A second biotope characterized by *Polygordius* spp. in coarse sand with small dunes/sand waves within moraine shelf in years 1 and 2 became dominated by *Polycirrus* spp. in year 3. The third bio-

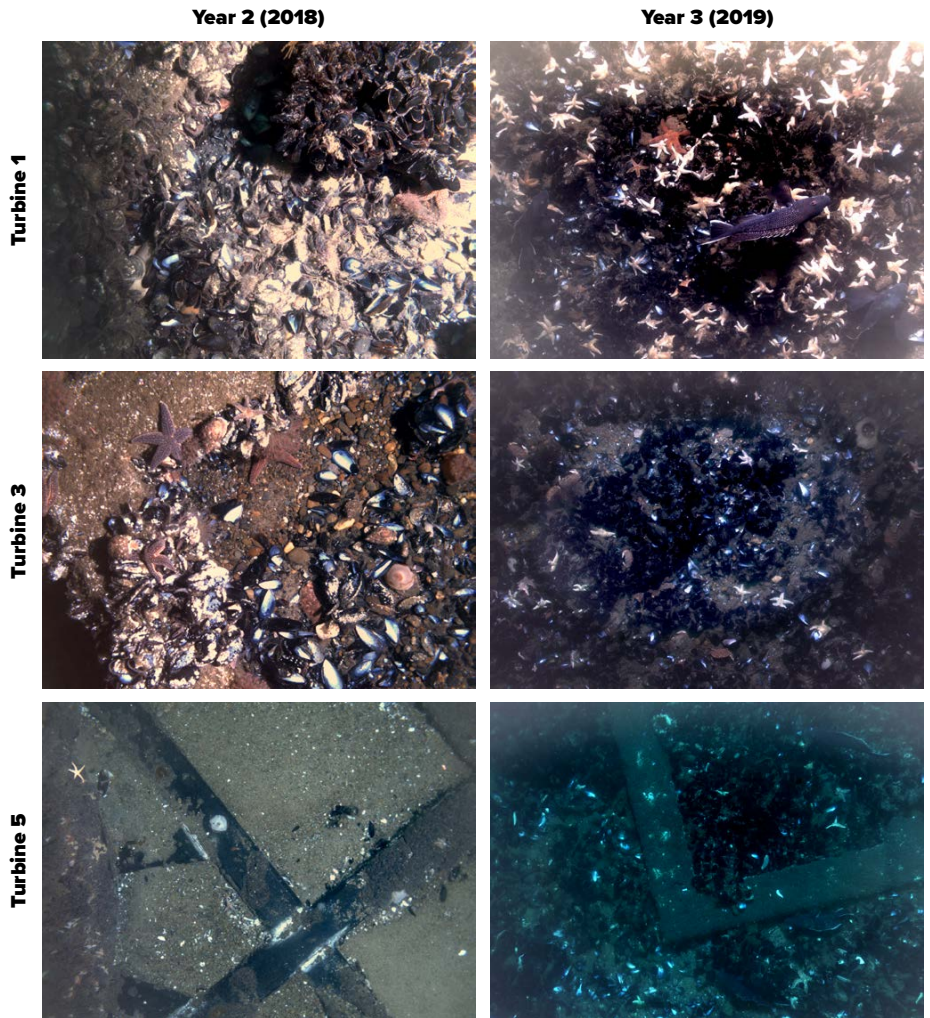


**FIGURE 2.** Fauna associated with the Block Island Wind Farm jacket structures four years post-installation. The jacket structures were dominated by filter-feeding mussels and associated epibionts. Mussel aggregations dominated the footprint of the jacket structures. Predators such as sea stars, moon snails, and crabs, as well as numerous fish had become attracted to the structure and associated epifauna. From HDR (2020a)

tope was co-dominated by *Polycirrus* spp. and *Lumbrineris* spp. in coarse sand with small dunes within glacial alluvial fan in year 1. In year 2, the co-dominant species changed to *Parapionosyllis longicirrata*, *Polycirrus* spp., and *Pisione* spp., but in year 3 *Polycirrus* spp. dominated.

Comparatively, by year 3, the biotope at Turbine 1 exhibited substantial change. Initially, the biotope was characterized by the polychaete *Sabellaria vulgaris* in coarse sand with small dunes within a glacial alluvial fan. In year 2, it was dominated by *Polygordius* sp., which had been abundant in year 1. The change in dominance was attributed to the patchy distribution of *S. vulgaris* in year 1 rather than turbine-related changes. In year 3, however, the biotope exhibited a stark change in characterizing species, biological traits, and function. Although polychaetes remained in the community composition, the biotope became co-dominated by *Balanus* spp. (barnacles) and *M. edulis*. These species were also dominant in communities found on and under the jacket structures, and so this change in biotope was strongly associated with the presence of the colonized foundation structures. Furthermore, this new biotope had not previously been recorded in the broader BIS area (Figure 1).

Turbine 1 differed from the other turbines with respect to proportions of epifaunal coverage on the structure, the extent of mussel aggregations within the footprint (Figure 3), and the shift in dominant species and resultant biotope classification. Temporal trends suggest that Turbines 3 and 5 are undergoing similar changes to Turbine 1 but at a slower pace. A gradient in benthic species composition reflects the geography of Turbines 1 through 3 and 5. This spatiotemporal gradient was also



**FIGURE 3.** Benthic macrofauna within the footprint of the BIWF jacket structures in years 2 and 3. Mussel aggregations that had fully covered the footprint of the foundation of Turbine 1 by year 2 (seabed and grate) intensified by year 3 to aggregations 35–50 cm thick. Changes at Turbines 3 and 5 occurred over a longer timeframe. At Turbine 3, patchy aggregations of mussels developed within the footprint in year 2, while at Turbine 5, none were present, and the grate was fully exposed. By year 3, aggregations at Turbines 3 and 5 resembled earlier aggregations at Turbine 1. Numerous predators (crabs, sea stars, moon snails) were found in association with the mussel aggregations. *From HDR (2020a)*

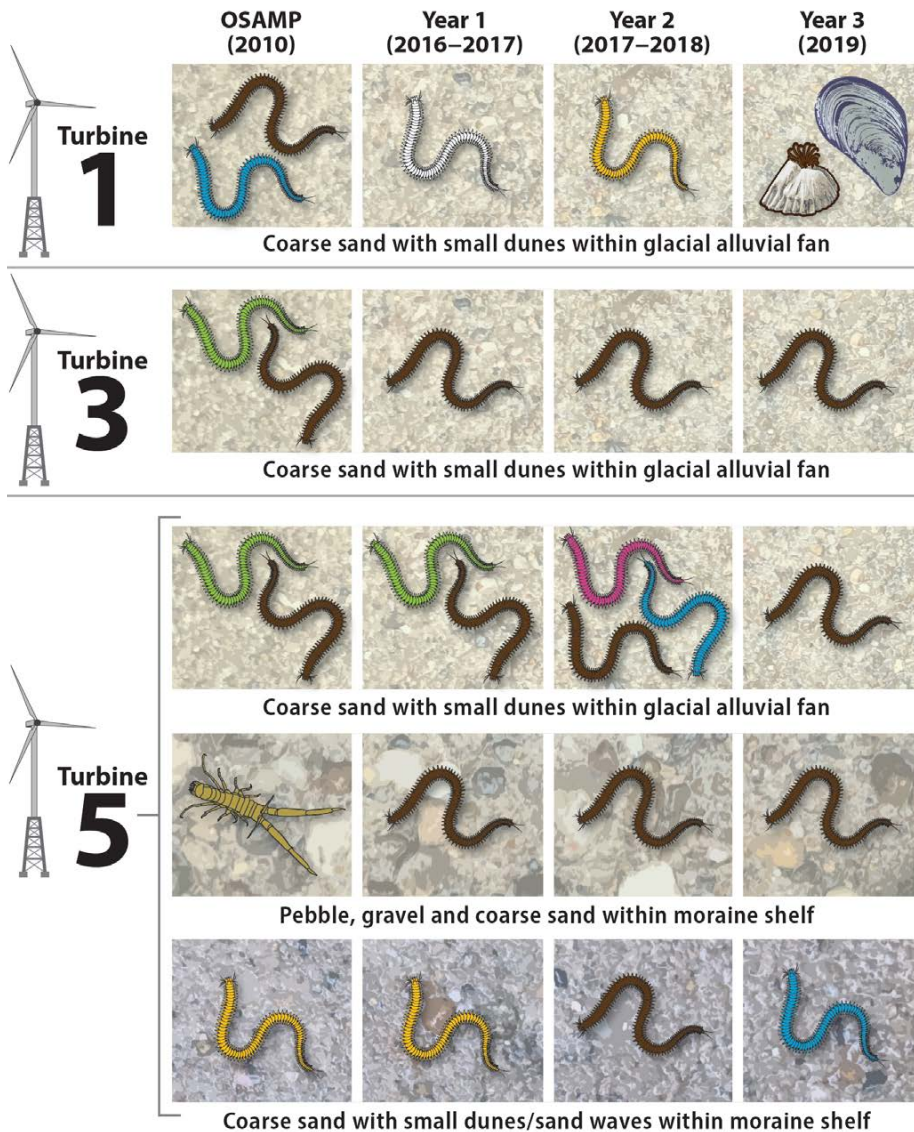


**FIGURE 4.** Fish presence at the BIWF. Black sea bass (*Centropristis striata*) dominated the video footage of the colonized BIWF structures four years post-construction. The base of Turbine 3 is shown here. *From HDR (2020a)*

observed in the abundance of organisms, particularly for *M. edulis* within the footprint of the turbines. Although depth was identified as an influential factor for benthic macrofauna composition in the

BIS area, there may be other related factors (LaFrance et al., 2014), such as bottom current strength and degree of wind-induced hydrodynamic disturbance. Multibeam data showed bedform features

(e.g., sand ripples) at Turbines 3 and 5, but none at Turbine 1, which is located in the deepest water (30 m) (HDR, 2020b). Additionally, construction marks were persistent at Turbine 1 but not at Turbines 3 and 5 (HDR, 2020b). While the hydrodynamics were not measured, these observations suggests that the seabed and parts of the Turbine 1 structure may be exposed to lower hydrodynamic energy compared to Turbines 3 and 5, which may partially explain the more rapid successional and benthic changes at Turbine 1. Collectively, spatiotemporal changes within the BIWF indicate within-array heterogeneity that has also been observed within some European OWFs (Lefaible et al., 2019).

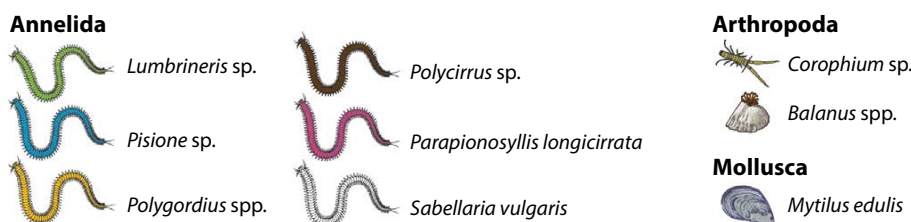


## ECOLOGICAL IMPORTANCE OF BENTHIC CHANGES AT THE BIWF

### The Benthos and Cascading Effects

As reported for other OWFs (Dannheim et al., 2020), the BIWF structures were quickly colonized and increased local diversity through increased habitat complexity (i.e., the provision of new habitat). Structurally, the BIWF provided vertical and horizontal hard substrate to be colonized in an otherwise coarse sand environment (LaFrance et al., 2014). The strong vertical epifaunal zonation observed on European foundation structures (Krone et al., 2013; De Mesel et al., 2015) was not observed at the BIWF, suggesting that four years post-construction, the colonizing community may still be in an intermediary successional stage (Kerckhof et al., 2010). It is possible that zonation on jacket structures such as the BIWF may differ from monopile and gravity structures, with mussels extending farther down the vertical profile (Krone et al., 2013). However, similar properties of a biomass hotspot (Krone et al., 2013) were recorded at the BIWF, and the benthic predators (snails, sea stars, crabs) present on and under the structures were likely benefiting from the new prey communities. Additionally, based on the presence of juvenile crabs (*Cancer* sp.),

## Biota Key



**FIGURE 5.** Change in dominant biota within biotopes over time at the BIWF. The 30–90 m areas around the three turbines were reclassified each year using the Coastal and Marine Ecological Classification Standard (CMECS) framework. Change in dominant species is highlighted from the OSAMP and RODEO monitoring effort. Note the strongest change occurs within the Turbine 1 biotope in year 3, now dominated by filter feeders *Balanus* spp. and *Mytilus edulis*. From HDR (2020a)

the BIWF potentially serves as a nursery ground, as suggested from increased production rates for crabs (*Cancer pagurus*) at European OWFs (Krone et al., 2017). The dominant mussel community created three-dimensional habitat complexity on an otherwise smooth structure, benefiting small reef species such as cunner (*Tautoglabrus adspersus*), while at a larger scale, the turbine structures hosted abundant black sea bass (*C. striata*) and other indigenous benthopelagic fish.

Functionally, the highly abundant mussel population on and within the structures' footprints will change the local ecosystem processes, including high filtration rates of local phytoplankton, increased excretions to the surrounding seabed (Maar et al., 2009), and increased carbon assimilation, particularly by *M. edulis* (Mavraki et al., 2020). By year 3 there was clear evidence of the mussel populations extending beyond the BIWF structures (30–90 m). The change in biotope classification around Turbine 1, resulting from the change in dominant species, demonstrates a shift in biological traits and function in the surrounding area related to the presence of the colonized turbine structure (Figure 4). While there were some biotope changes at Turbines 3 and 5, the biota remained dominated by polychaetes, which are deposit- and filter-feeding, burrowing, or tube-building or burrowing bioturbators (Hutchings, 1998). Comparatively, the dominant biota of the Turbine 1 biotope were barnacles and mussels, which are sessile filter feeders, and encrusting or bed-forming species, which offer sediment consolidation (Trager et al., 1990; Riisgård et al., 2011; Fariñas-Franco et al., 2014), while the supporting polychaete community contributes bioturbation in the local area.

The bioengineering properties of mussels were evident within the turbine footprints and within the new biotope at select sample locations. Patches of adult mussels with associated fine sediments, organic enrichment, and modified benthic macrofaunal communities

were recorded within 50 m of Turbine 1. Similar patches of mussel and associated properties near turbines (~37.5 m) were recently recorded within the Thornton Bank Belgian OWF and were proposed to be the result of adult mussels transported from the structures (Lefaible et al., 2019).

High mussel exports are expected (Krone et al., 2013), although it is likely that the off-structure mussel aggregations at the BIWF are not only mussels that dropped off of the structures but also new recruits. The high abundance of juveniles in the year 3 sampling indicates local spat settlement and suggests suitable conditions for an expanding population. Mussels have already been found in areas further from the BIWF, beyond the spatial scope of the RODEO effort, 1.6–4.8 km west of Turbine 5, where they were not previously recorded (Wilber et al., 2020). The addition of the BIWF mussel population and other epibionts could have far-reaching larval distributions—tens of kilometers—increasing connectivity between natural and OWF populations (Gilg and Hilbish, 2003; Coolen et al., 2020). The contribution of larval connectivity to further proliferation of filter-feeding populations may then influence carbon cycling at broader geographical scales. Models indicate that the increased population of filter feeders resulting from OWF proliferation in the southern North Sea Basin may lead to regional changes in primary productivity (Slavik et al., 2019), but as yet there are no comparable modeled scenarios incorporating the OWF expansion along the US East Coast.

### Potential Importance to Managed Species

OWF structures may have direct and indirect effects for some species, especially when they are situated where hard substrates and associated epifauna are scarce. These effects may be particularly important for managed species, those for which management plans have been developed because they are economically or culturally important or because of their popu-

lation status (e.g., small, declining, or dependent on vulnerable habitats). The OWF artificial reef effect is now relatively well characterized as benefiting fish and shellfish by providing refuge and creating forage, and as attracting abundant and diverse communities, although some processes require further attention (Degraer et al., 2020, in this issue).

Recent meta-analysis of finfish within European OWFs highlights a broadly positive effect on fish abundance during the operational phase (Methratta and Dardick, 2019). Examples of increased abundance and biomass of culturally important species include Atlantic cod (*Gadus morhua*), pollock (*Pollachius pollachius*), pout whiting (*Trisopterus luscus*), and crabs (*Cancer* sp.) (Wilhelmsson et al., 2006; Bergström et al., 2013; Reubens et al., 2014; Krone et al., 2017). Atlantic cod and pout whiting aggregate around OWF foundations in the North Sea in response to increased food availability provided by colonizing species (Reubens et al., 2014; Mavraki, 2020). Metabolic analyses of both species indicate sufficient energy for growth, suggesting localized increased fish productivity, but no evidence of regional effects have been documented (Reubens et al., 2014). Furthermore, the degree of attraction was found to vary seasonally, highlighting the importance of incorporating species life history and movement ecology in any monitoring efforts.

Trophic and energetic analyses of fish around the BIWF structures have yet to be conducted; however, nearby, increased findings of mussels in the stomachs of winter flounder (*Pseudopleuronectes americanus*) have been recorded (Wilber et al., 2020). Changes in primary productivity due to increased filter-feeding populations (Slavik et al., 2019) may also become important for planktivorous fish in BIS (Malek et al., 2010) and future OWF areas. Seasonality in fish use of the BIWF has also yet to be addressed, although the presence of fish suggests they are profiting from the provision of food and/or shelter. Black sea bass



(Figure 4) and other structure-oriented species will likely benefit from future US OWFs. Local fishers have targeted large tautog (*Tautoga onitis*) near BIWF foundations and noted that Atlantic cod are attracted to the area (ten Brink and Dalton, 2018), consistent with data from European OWFs (Reubens et al., 2014). Whether fish resources increase (i.e., production) around OWFs, or biomass is simply redistributed (i.e., aggregation) requires clarification. Recent evidence demonstrates energy savings in juvenile Atlantic cod associated with stone reef habitats compared to sand habitats, which may allow energy to be allocated to growth and thus increase production (Schwartzbach et al., 2020). Similar studies of metabolic rates of cod and other species associated with OWFs and comparable local habitats would be beneficial going forward.

Managers must also consider the value of habitat change (Gill, 2005). The OWF reefs differ from natural hard substrates and cannot be considered a substitute (Kerckhof et al., 2017), although they may have added value, albeit different value (Degraer et al., 2020, in this issue). The new structural habitat gained exceeds the seabed habitat lost in terms of spatial extent. However, the transition from natural soft-bottom substrate to hard substrate habitat (including mussel-dominated biotopes) may displace species that prefer soft-bottom habitats and associated prey. Prior to construction, the BIWF area was mostly coarse sand with some pebble and gravel substrate, essential fish habitat for 24 managed species (CRMC, 2010). To fully determine the value of change in habitat as relevant to managed species, the habitat and fish need to be assessed. This likely requires using varied techniques that are applicable to selected demersal and pelagic species (e.g., demersal trawl, hook and line surveys, fyke nets, diver surveys, telemetry), targeted both at the structures and far from them over valid temporal scales. In the northwest Atlantic, several species use soft-bottom habitat slated for OWFs,

including numerous flatfish and longfin inshore squid (*Doryteuthis pealeii*), an important prey species (Jacobson, 2005). Lower impacts and quicker recovery from disturbances in soft bottoms (e.g., mud, sand) have been found (Grabowski et al., 2014), but the number of species affected or their ecosystem values may be larger (Henriques et al., 2014; Kritzer et al., 2016). To date, the majority of OWFs have resulted in the introduction of hard structure into a soft sediment environment. However, the United States has leased an area in natural, complex, hard-bottom habitat that provides important ecosystem functions (e.g., cod spawning ground; Zemeckis et al., 2014). While a lease in this habitat type and the associated habitat change are atypical, the ecological significance will need to be defined.

### STRATEGIC LESSONS FROM BENTHIC MONITORING AT THE BLOCK ISLAND WIND FARM

The RODEO benthic monitoring philosophy involved observing and quantifying near-field changes in benthic ecology at the BIWF. It was the first opportunity to observe such changes at a US OWF, and given the BIWF's novelty, it was reasonable to focus on small-scale spatiotemporal changes. The relatively short-term seabed sampling strategy was designed to provide insight into changes in sediment composition, organic enrichment, and benthic macrofauna. The adaptive nature of the strategy proved valuable for assessing benthic changes observed close to the structures and also expanded to incorporate artificial reef effects, providing a multi-faceted overview of changes occurring around the BIWF.

Complementary information was obtained using primary and supplemental methods (Box 1). The primary randomized benthic sampling across distance bands allowed a broad spatial view while assessing gradients of change in sediment, enrichment, and benthic macrofauna from the turbines. The application of the CMECS framework highlighted the importance of fully characterizing

biotic changes and provided a sufficiently high-level of classification to allow contextualization of local biotopes within the regional pre-siting OSAMP biotopes. Future studies will need to carefully consider appropriate baselines (new data collection and/or pre-existing data) and their comparability to new data collected throughout the monitoring effort. A fuller understanding of the benthic changes observed, including a better overview of gradients of change with proximity to the turbines, was obtained from the supplemental sampling. However, the integration of primary and supplemental data sets was challenging, and further attention to the comparability of varied sampling strategies or addition of relevant controls may benefit future monitoring efforts. Longer-term monitoring would be required to determine the climax colonizing community on the structures and the potential development of vertical zonation. Future monitoring efforts should also consider seasonal effects in biota and use targeted fish surveys to quantify abundance, community composition, and the relevance of artificial reef effects to local species (e.g., quantifying trophic or refuge effects on fish biomass). Where grab sampling is prevented due to mussel aggregations, the incorporation of reef metrics may be useful (e.g., Hendrick and Foster-Smith, 2006; Gubbay et al., 2007). Finally, the development of automated methods may allow rapid characterization from benthic photography. The appropriate application or development of refined methods should be based on strategic prioritization of the ecological questions to be addressed.

The RODEO benthic monitoring effort provides regionally relevant (i.e., for the US East Coast) observations of benthic changes similar to those observed from European and UK OWFs and establishes a platform from which to prioritize future US monitoring efforts. Going forward, our recommendation is to move beyond the philosophy of this monitoring effort to focusing on gaining a deeper understanding of the effects of OWFs on ben-

thic ecology and their functional relevance to the broader ecosystem. Benthic ecology plays a vital role in trophic provisions, biogeochemical processes, and biodiversity (Dannheim et al., 2020). Addressing how OWFs affect these functions will require careful collection of empirical data at spatiotemporally relevant scales as well as modeling in order to understand regional importance (Wilding et al., 2017). Consideration of the functional changes over the life of an OWF will require data collection and modeling over a longer timeframe and a broader spatial scale, partnered with suitable long-term pre-OWF comparisons, and further should incorporate analyses of cumulative effects (Wilding et al., 2017; Willsted et al., 2017).

## ENVIRONMENTAL MONITORING—THE PATH FORWARD

The ecological lessons learned from the BIWF benthic monitoring program—for example, observations of rapid colonization dominated by filter feeders and attraction of fish as well as indigenous and non-indigenous species—are largely similar to observations in European OWFs (Degraer et al., 2020, in this issue). We acknowledge that there are apparent differences; the species (including their value and health) are region specific, the hydrodynamic systems are different (e.g., open coast, basin), and there may be some influence from foundation types. However, the effects on the functioning of the ecosystem are largely comparable. Consequently, the underlying scientific questions appear broadly applicable, offering great opportunities for enhanced efficiency and effectiveness of monitoring programs as OWFs proliferate along the US coasts. Rather than designing monitoring programs on a project-by-project basis, resource efficiency implies that monitoring programs should ideally focus on a careful selection of OWFs considered representative of a region, or suitable for a given research question. This approach is exemplified by basic

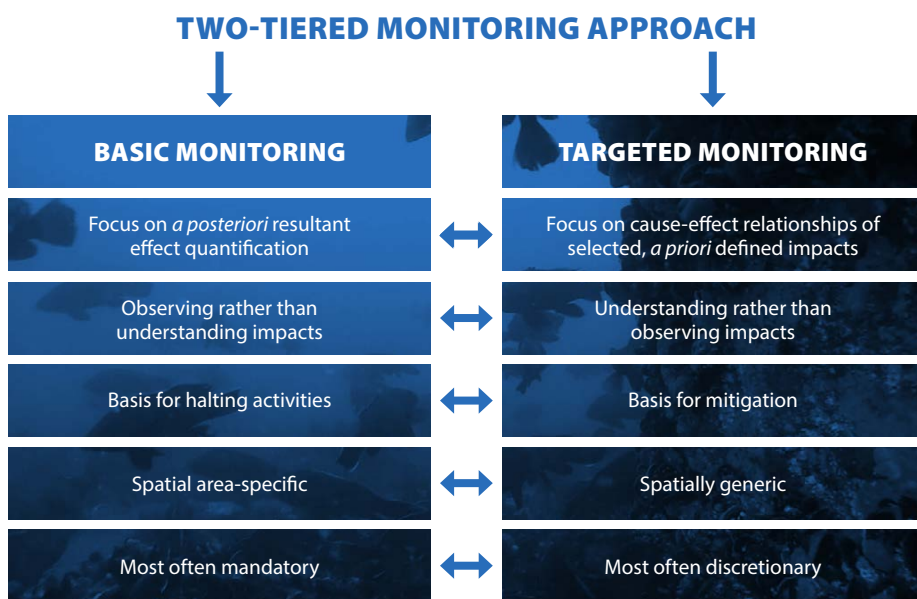
and targeted monitoring (Lindeboom et al., 2015), as adopted by the Belgian WinMon.BE monitoring program that encompasses eight OWFs (Degraer et al., 2009; Figure 6).

Basic monitoring aims to objectively evaluate impacts of OWFs *a posteriori*, allowing even unforeseen impacts to be evaluated. Targeted monitoring aims to understand the underlying ecological processes behind the prioritized observed impacts. It allows results to be extrapolated beyond the study area to enhance impact prediction and evidence-based mitigation. Basic monitoring is usually mandatory, integrated within OWF environmental permitting, whereas targeted monitoring is often dependent on governmental research funds.


Industry manages most monitoring programs in Europe, informed by national environmental permit and monitoring standards (e.g., the StUK4 monitoring scheme in Germany; BSH, 2013). These permit-based monitoring programs neither allow the flexibility needed to adopt basic and targeted monitoring schemes nor optimize programs as new scientific knowledge becomes available. Furthermore, data from industry-

managed monitoring programs are generally not publicly accessible and often only offer short-term data series that result in information of limited value.

To remedy these issues, Belgium has opted for a single, integrated, public-authority-driven OWF environmental monitoring program. Active since 2005, WinMon.BE facilitates an adaptive approach for basic and targeted monitoring (Degraer et al., 2019). The public authority has the explicit right and duty to share the monitoring data (UNECE, 1998) and to adapt the monitoring program according to new scientific insights. Funding is provided by financial contributions from all OWF owners as required by the environmental license. On the other hand, the public-authority-funded Dutch Governmental Offshore Wind Ecological Programme (WOZEP), which has been active since 2016, does not cover the monitoring of specific projects but rather seeks to address the main knowledge gaps related to OWF environmental impacts, including cumulative effects (WOZEP, 2016). Both the WinMon.BE and WOZEP monitoring schemes have been noted as best practices. Situated on the cusp of exten-



**FIGURE 6.** Recommendations for future monitoring approaches. A two-tiered monitoring approach embracing basic monitoring and targeted research allows for a comprehensive overview and understanding of impacts, maximizing the value of the monitoring results.

sive OWF construction in a vast marine area within the boundaries of a single country, the United States should now consider implementing a similarly coordinated monitoring strategy to allow an efficient, adaptive, combined basic and targeted monitoring scheme. 

## REFERENCES

- Bergström, L., F. Sundqvist, and U. Bergström. 2013. Effects of an offshore wind farm on temporal and spatial patterns in the demersal fish community. *Marine Ecology Progress Series* 485(1):199–210, <https://doi.org/10.3354/meps10344>.
- BOEM (Bureau of Ocean Energy Management). 2019. Renewable Energy; Lease and Grant Information. <https://www.boem.gov/renewable-energy/lease-and-grant-information>.
- BSH (Bundesamt für Seeschifffahrt und Hydrographie). 2013. *Standard Investigation of the Impacts of Offshore Wind Turbines on the Marine Environment (StUK4)*. BSH-Nr. 7003 for the German Federal Maritime and Hydrographic Agency, 87 pp.
- Coates, D.A., Y. Deschutter, M. Vincx, and J. Vanaverbeke. 2014. Enrichment and shifts in macrobenthic assemblages in an offshore wind farm area in the Belgian part of the North Sea. *Marine Environmental Research* 95:1–12, <https://doi.org/10.1016/j.marenvres.2013.12.008>.
- Coolen, J.W.P., A.R. Boon, R. Crooijmans, H. van Pelt, F. Kleissen, D. Gerla, J. Beermann, S.N.R. Birchenough, L.E. Becking, and P.C. Luttkhuizen. 2020. Marine stepping-stones: Connectivity of *Mytilus edulis* populations between offshore energy installations. *Molecular Ecology* 29(4):686–703, <https://doi.org/10.1111/mec.15364>.
- CRMC (Coastal Resources Management Council). 2010. *OceanSAMP, Volume 2*. Rhode Island Ocean Special Area Management Plan, 2,922 pp., [https://seagrant.gso.uri.edu/oceansamp/pdf/appendix/full\\_volume2\\_osamp\\_4.26.13.pdf](https://seagrant.gso.uri.edu/oceansamp/pdf/appendix/full_volume2_osamp_4.26.13.pdf).
- Dannheim, J., L. Bergström, S.N.R. Birchenough, R. Brzana, A.R. Boon, J.W.P. Coolen, J.-C. Dauvin, I. De Mesel, J. Derweduwén, A.B. Gill, and others. 2020. Benthic effects of offshore renewables: Identification of knowledge gaps and urgently needed research. *ICES Journal of Marine Science* 77(3):1,092–1,108, <https://doi.org/10.1093/icesjms/fsz018>.
- Degraer, S., R. Brabant, and Partnership. 2009. Recommendations for a future monitoring of wind farms in Belgium's marine waters. Pp. 275–279 in *Offshore Wind Farms in the Belgian Part of the North Sea: State of the Art After Two Years of Environmental Monitoring*. S. Degraer and R. Brabant, eds, Royal Belgian Institute for Natural Sciences, Management Unit of the North Sea Mathematical Models, Marine Ecosystem Management Unit, Brussels.
- Degraer, S., R. Brabant, B. Rumes, and L. Vigin, eds. 2019. *Environmental Impacts of Offshore Wind Farms in the Belgian Part of the North Sea: Marking a Decade of Monitoring, Research and Innovation*. Royal Belgian Institute of Natural Sciences, OD Natural Environment, Marine Ecology and Management, Brussels, 134 pp.
- Degraer, S., D.A. Carey, J.W.P. Coolen, Z.L. Hutchison, F. Kerckhof, B. Rumes, and J. Vanaverbeke. 2020. Offshore wind farm artificial reefs affect ecosystem structure and functioning: A synthesis. *Oceanography* 33(4):48–57, <https://doi.org/10.5670/oceanog.2020.405>.
- De Mesel, I., F. Kerckhof, A. Norro, B. Rumes, and S. Degraer. 2015. Succession and seasonal dynamics of the epifauna community on offshore wind farm foundations and their role as stepping stones for non-indigenous species. *Hydrobiologia* 756:37–50, <https://doi.org/10.1007/s10750-014-2157-1>.
- Emu Limited. 2008. *Kentish Flats Offshore Wind Farm Turbine Foundation Faunal Colonisation Diving Survey*. Report No 08/J/1/03/1034/0839, Report by Vattenfall, 22 pp.
- Fariñas-Franco, J.M., B. Pearce, J. Porter, D. Harries, J.M.M. Mair, A.S.S. Woolmer, W.G.G. Sanderson, J.M. Fariñas-Franco, B. Pearce, J. Porter, and others. 2014. *Marine Strategy Framework Directive Indicators for Biogenic Reefs Formed by Modiolus modiolus, Mytilus edulis and Sabellaria spinulosa: Part 1. Defining and Validating the Indicators*. JNCC Report, No. 523, Heriot Watt University for JNCC, JNCC Peterborough, 379 pp.
- FGDC (Federal Geographic Data Committee). 2012. *Coastal and Marine Ecological Classification Standard. Marine and Coastal Spatial Data 1643 Subcommittee (Federal Geographic Data Committee)*. 353 pp.
- Gilg, M.R., and T.J. Hilbish. 2003. The geography of marine larval dispersal: Coupling genetics with fine-scale physical oceanography. *Ecology* 84(11):2,989–2,998, <https://doi.org/10.1890/02-0498>.
- Gill, A.B. 2005. Offshore renewable energy: Ecological implications of generating electricity in the coastal zone. *Journal of Applied Ecology* 42(4):605–615, <https://doi.org/10.1111/j.1365-2664.2005.01060.x>.
- Grabowski, J.H., M. Bachman, C. Demarest, S. Eayrs, B.P. Harris, V. Malkoski, D. Packer, and D. Stevenson. 2014. Assessing the vulnerability of marine benthos to fishing gear impacts. *Reviews in Fisheries Science & Aquaculture* 2(2):142–155, <https://doi.org/10.1080/10641262.2013.846292>.
- Grace, S. 2017. Winter quiescence, growth rate, and the release from competition in the temperate scleractinian coral *Astrangia poculata* (Ellis & Solander 1786). *Northeastern Naturalist* 24(sp7), <https://doi.org/10.1656/045.024.s715>.
- Gubbay, S. 2007. *Defining and Managing Sabellaria spinulosa reefs: Report of an Inter-Agency Workshop 1–2 May 2007*. JNCC Report No. 405, JNCC, Peterborough, 26 pp.
- GWEC (Global Wind Energy Council). 2019. *Global Wind Report 2018*. Global Wind Energy Council, Brussels, Belgium, 62 pp., <https://gwec.net/wp-content/uploads/2019/04/GWEC-Global-Wind-Report-2018.pdf>.
- HDR. 2019. *Field Observations During Wind Turbine Foundation Installation at the Block Island Wind Farm, Rhode Island*. Final Report to the US Department of the Interior, Bureau of Ocean Energy Management, Office of Renewable Energy Programs, OCS Study BOEM 2019-028, 281 pp., [https://espis.boem.gov/final\\_reports/BOEM\\_2019-028.pdf](https://espis.boem.gov/final_reports/BOEM_2019-028.pdf).
- HDR. 2020a. *Benthic and Epifaunal Monitoring During Wind Turbine Installation and Operation at the Block Island Wind Farm, Rhode Island – Project Report*. Final Report to the US Department of the Interior, Bureau of Ocean Energy Management, Office of Renewable Energy Programs, OCS Study BOEM 2020-044, Volume I, 263 pp; Volume II, 380 pp.
- HDR. 2020b. *Seafloor Disturbance and Recovery Monitoring at the Block Island Wind Farm, Rhode Island – Summary Report*. Final Report to the US Department of the Interior, Bureau of Ocean Energy Management, Office of Renewable Energy Programs, OCS Study BOEM 2020-019, 63 pp.
- Hendrick, V.J., and R.L. Foster-Smith. 2006. *Sabellaria spinulosa* reef: A scoring system for evaluating 'reefiness' in the context of the Habitats Directive. *Journal of the Marine Biological Association of the United Kingdom* 86(04):665–677, <https://doi.org/10.1017/S0025315406013555>.
- Henriques, S., M.P. Pais, R.P. Vasconcelos, A. Murta, M. Azevedo, M.J. Costa, and H.N. Cabral. 2014. Structural and functional trends indicate fishing pressure on marine fish assemblages. *Journal of Applied Ecology* 51(3):623–631, <https://doi.org/10.1111/1365-2664.12235>.
- Hutchings, P. 1998. Biodiversity and functioning of polychaetes in benthic sediments. *Biodiversity & Conservation* 7(9):1,133–1,145, <https://doi.org/10.1023/A:1008871430178>.
- Jacobson, L.D. 2005. *Longfin Inshore Squid, Loligo pealeii, Life History and Habitat Characteristics, Second Edition*. NOAA Technical Memorandum NMFS-NE-193, US Department of Commerce, National Marine Fisheries Service, 52 pp.
- Kerckhof, F., B. Rumes, T. Jacques, S. Degraer, and A. Noro. 2010. Early development of the subtidal marine biofouling on a concrete offshore windmill foundation on the Thornton Bank (southern North Sea): First monitoring results. *International Journal of the Society for Underwater Technology* 29(3):137–149, <https://doi.org/10.3723/ut.29.137>.
- Kerckhof, F., B. Rumes, and S. Degraer. 2017. On the replicability of natural gravel beds by artificial hard substrata in Belgian waters. Pp. 73–84 in *Environmental Impacts of Offshore Wind Farms in the Belgian Part of the North Sea: A Continued Move Towards Integration and Quantification*. S. Degraer, R. Brabant, B. Rumes, and L. Vigin, eds, Royal Belgian Institute of Natural Sciences, OD Natural Environment, Marine Ecology and Management Section, Brussels.
- Kritzer, J.P., M.B. DeLucia, E. Greene, C. Shumway, M.F. Topolski, J. Thomas-Blate, L.A. Chiarella, K.B. Davy, and K. Smith. 2016. The importance of benthic habitats for coastal fisheries. *BioScience* 66(4):274–284, <https://doi.org/10.1093/biosci/biw014>.
- Krone, R., L. Gutow, T.J. Joschko, and A. Schröder. 2013. Epifauna dynamics at an offshore foundation – Implications of future wind power farming in the North Sea. *Marine Environmental Research* 85:1–12, <https://doi.org/10.1016/j.marenvres.2012.12.004>.
- Krone, R., G. Dederer, P. Kanstinger, P. Krämer, C. Schneider, and I. Schmalenbach. 2017. Mobile demersal megafauna at common offshore wind turbine foundations in the German Bight (North Sea) two years after deployment – Increased production rate of *Cancer pagurus*. *Marine Environmental Research* 123:53–61, <https://doi.org/10.1016/j.marenvres.2016.11.011>.
- Lefaible, N., L. Colson, U. Braeckman, and T. Moens. 2019. Evaluation of turbine-related impacts on macrobenthic communities with two offshore wind farms during the operational phase. Pp. 47–64 in *Environmental Impacts of Offshore Wind Farms in the Belgian Part of the North Sea: Marking a Decade of Monitoring, Research and Innovation*. S. Degraer, R. Brabant, B. Rumes, and L. Vigin, eds, Royal Belgian Institute of Natural Sciences, OD Natural Environment, Marine Ecology and Management, Brussels.
- LaFrance, M., J.W. King, B.A. Oakley, and S. Pratt. 2014. A comparison of top-down and bottom-up approaches to benthic habitat mapping to inform offshore wind energy development. *Continental Shelf Research* 83:24–44, <https://doi.org/10.1016/j.csr.2014.04.007>.

- Lindeboom, H., S. Degraer, J. Dannheim, A.B. Gill, and D. Wilhelmsson. 2015. Offshore wind park monitoring programmes, lessons learned and recommendations for the future. *Hydrobiologia* 756(1):169–180, <https://doi.org/10.1007/s10750-015-2267-4>.
- Maar, M., K. Bolding, J.K. Petersen, J.L.S. Hansen, and K. Timmermann. 2009. Local effects of blue mussels around turbine foundations in an ecosystem model of Nysted off-shore wind farm, Denmark. *Journal of Sea Research* 62(2):159–174, <https://doi.org/10.1016/j.seares.2009.01.008>.
- Malek, A., M. LaFrance, J. Collie, and J. King. 2010. Fisheries ecology in Rhode Island and Block Island Sounds for the Rhode Island Ocean Special Area Management Plan 2010. Pp. 2,102–2,158 in *oceanSAMP, Volume 2: Rhode Island Ocean Special Area Management Plan*, Coastal Resources Management Council.
- Manoukian, S., A. Spagnolo, G. Scarcella, E. Punzo, R. Angelini, and G. Fabi. 2010. Effects of two offshore gas platforms on soft-bottom benthic communities (northwestern Adriatic Sea, Italy). *Marine Environmental Research* 70(5):402–410, <https://doi.org/10.1016/j.marenvres.2010.08.004>.
- Mavraki, N. 2020. *On the Food-Web Ecology of Offshore Wind Farms, the Kingdom of Suspension Feeders*. Doctoral dissertation, Ghent University, 278 pp.
- Mavraki, N., S. Degraer, J. Vanaverbeke, and U. Braeckman. 2020. Organic matter assimilation by hard substrate fauna in an offshore wind farm area: A pulse-chase study. *ICES Journal of Marine Science* fsaa133, <https://doi.org/10.1093/icesjms/fsaa133>.
- Methratta, E.T., and W.R. Dardick. 2019. Meta-analysis of finfish abundance at offshore wind farms. *Reviews in Fisheries Science & Aquaculture* 27(2):242–260, <https://doi.org/10.1080/23308249.2019.1584601>.
- Nixon, S., S. Granger, C. Oviatt, L. Fields, and J. Mercer. 2010. Spatial and temporal variability of surface chlorophyll, primary production, and benthic metabolism in Rhode Island and Block Island Sounds. Pp. 652–704 in *oceanSAMP, Volume 2: Rhode Island Ocean Special Area Management Plan*. Coastal Resources Management Council.
- Page, H.M., J.E. Dugan, D.S. Dugan, J.B. Richards, and D.M. Hubbard. 1999. Effects of an offshore oil platform on the distribution and abundance of commercially important crab species. *Marine Ecology Progress Series* 185:47–57, <https://doi.org/10.3354/meps185047>.
- Reubens, J.T., S. Degraer, and M. Vincx. 2014. The ecology of benthopelagic fishes at offshore wind farms: A synthesis of 4 years of research. *Hydrobiologia* 727:121–136, <https://doi.org/10.1007/s10750-013-1793-1>.
- Riisgård, H.U.S., P.P. Egede, I.B. Saavedra, and I. Barreiro Saavedra. 2011. Feeding behaviour of the mussel, *Mytilus edulis*: New observations, with a minireview of current knowledge. *Journal of Marine Biology* 2011:312459, <https://doi.org/10.1155/2011/312459>.
- Schröder, A., C. Orejas, and T. Joschko. 2006. Benthos in the vicinity of piles: FINO 1 (North Sea). Pp. 185–200 in *Offshore Wind Energy: Research on Environmental Impacts*. J. Köller, J. Köppel, and W. Peters, eds, Springer Berlin Heidelberg, [https://doi.org/10.1007/978-3-540-34677-7\\_12](https://doi.org/10.1007/978-3-540-34677-7_12).
- Schwartzbach, A., J. Behrens, and J. Svendsen. 2020. Atlantic cod *Gadus morhua* save energy on stone reefs: Implications for the attraction versus production debate in relation to reefs. *Marine Ecology Progress Series* 635:81–87, <https://doi.org/10.3354/meps13192>.
- Slavik, K., C. Lemmen, W. Zhang, O. Kerimoglu, K. Klingbeil, and K.W. Wirtz. 2019. The large-scale impact of offshore wind farm structures on pelagic primary productivity in the southern North Sea. *Hydrobiologia* 845(1):35–53, <https://doi.org/10.1007/s10750-018-3653-5>.
- Steimle, F.W. 1982. The benthic macroinvertebrates of the Block Island Sound. *Estuarine, Coastal and Shelf Science* 15(1):1–16, [https://doi.org/10.1016/0272-7714\(82\)90032-4](https://doi.org/10.1016/0272-7714(82)90032-4).
- ten Brink, T.S., and T. Dalton. 2018. Perceptions of commercial and recreational fishers on the potential ecological impacts of the Block Island Wind Farm (US). *Frontiers in Marine Science* 5(439):1–13, <https://doi.org/10.3389/fmars.2018.00439>.
- Trager, G.C., J.-S. Hwang, and J.R. Strickler. 1990. Barnacle suspension-feeding in variable flow. *Marine Biology* 105(1):117–127, <https://doi.org/10.1007/BF01344277>.
- UNECE (United Nations Economic Commission for Europe). 1998. *The Aarhus Convention*.
- Valentine, P.C., M.R. Carman, J. Dijkstra, and D.S. Blackwood. 2009. Larval recruitment of the invasive colonial ascidian *Didemnum vexillum*, seasonal water temperatures in New England coastal and offshore waters, and implications for spread of the species. *Aquatic Invasions* 4(1):153–168, <https://doi.org/10.3391/ai.2009.4.1.16>.
- Wilber, D., L. Read, M. Griffin, and D. Carey. 2020. *Block Island Wind Farm Demersal Fish Trawl Survey Synthesis Report – Years 1 to 6, October 2012 through September 2018*. 182 pp.
- Wilding, T.A., A.B. Gill, A. Boon, E. Sheehan, J.C. Dauvin, J.-P.P. Pezy, F. O’Beirn, U. Janas, L. Rostin, I. De Mesel, and others. 2017. Turning off the DRIP (‘Data-rich, information-poor’) – Rationalising monitoring with a focus on marine renewable energy developments and the benthos. *Renewable and Sustainable Energy Reviews* 74:848–859, <https://doi.org/10.1016/j.rser.2017.03.013>.
- Wilhelmsson, D., T. Malm, and M.C. Öhman. 2006. The influence of offshore windpower on demersal fish. *ICES Journal of Marine Science* 63(5):775–784, <https://doi.org/10.1016/j.icesjms.2006.02.001>.
- Willstead, E., A.B. Gill, S.N.R. Birchenough, and S. Jude. 2017. Assessing the cumulative environmental effects of marine renewable energy developments: Establishing common ground. *Science of the Total Environment* 577:19–32, <https://doi.org/10.1016/j.scitotenv.2016.10.152>.
- Wolfson, A., G. Van Blaricom, N. Davis, and G.S. Lewbel. 1979. The marine life of an offshore oil platform. *Marine Ecology Progress Series* 1:81–89, <https://doi.org/10.3354/meps001081>.
- WOZEP (Dutch Governmental Offshore Wind Ecological Programme). 2016. *Offshore wind energy ecological programme (Wozep): Monitoring and research programme 2017–2021*. Final Report, Rijkswaterstaat, Ministry of Infrastructure and the Environment, 69 pp.
- Zemeckis, D.R., D. Martins, L.A. Kerr, and S.X. Cadrin. 2014. Stock identification of Atlantic cod (*Gadus morhua*) in US waters: An interdisciplinary approach. *ICES Journal of Marine Science* 71(6):1,490–1,506, <https://doi.org/10.1093/icesjms/fsu032>.
- Belgian WinMon.BE offshore wind farm environmental monitoring program. We thank Kristen Ampela, Nancy Jepsen, and Dorothy Bungert (HDR) for editing and graphics support. We also thank the guest editors for the invitation to contribute to this special issue.

## AUTHORS

**Zoë L. Hutchison** ([zoe\\_hutchison@uri.edu](mailto:zoe_hutchison@uri.edu)) is Postdoctoral Research Scientist and **Monique LaFrance Bartley** is Postdoctoral Research Scientist, both at the Graduate School of Oceanography, University of Rhode Island, Narragansett, RI, USA. **Steven Degraer** is Prime Work Leader and Professor, Royal Belgian Institute of Natural Sciences, Operational Directorate Natural Environment, Marine Ecology and Management, Brussels, Belgium. **Paul English** is Principal Consultant, FUGRO GB Marine Ltd., Portchester, Hampshire, UK. **Anwar Khan** is Senior Program Manager, HDR, Englewood, CO, USA. **Julia Livermore** is Supervising Biologist, Rhode Island Department of Environmental Management, Division of Marine Fisheries, Jamestown, RI, USA. **Bob Rumes** is Postdoctoral Research Scientist, Royal Belgian Institute of Natural Sciences, Operational Directorate Natural Environment, Marine Ecology and Management, Brussels, Belgium. **John W. King** is Professor, Graduate School of Oceanography, University of Rhode Island, Narragansett, RI, USA.

## ARTICLE CITATION

Hutchison, Z.L., M. LaFrance Bartley, S. Degraer, P. English, A. Khan, J. Livermore, B. Rumes, and J.W. King. 2020. Offshore wind energy and benthic habitat changes: Lessons from Block Island Wind Farm. *Oceanography* 33(4):58–69, <https://doi.org/10.5670/oceanog.2020.406>.

## COPYRIGHT & USAGE

This is an open access article made available under the terms of the Creative Commons Attribution 4.0 International License (<https://creativecommons.org/licenses/by/4.0/>), which permits use, sharing, adaptation, distribution, and reproduction in any medium or format as long as users cite the materials appropriately, provide a link to the Creative Commons license, and indicate the changes that were made to the original content.

## ACKNOWLEDGMENTS

Study concepts, oversight, and funding for the RODEO Program were provided by the US Department of the Interior, Bureau of Ocean Energy Management, Environmental Studies Program, Washington, DC, under HDR’s IDIQ Contract No. M15PC00002. This paper contributes to the