

**Bat Acoustic Survey Report for the  
Crocker Wind Farm  
Clark County, South Dakota**

---

**April 14 – October 27, 2016**



**Prepared for:**

**Crocker Wind Farm, LLC**

7650 Edinborough Way #725

Edina, Minnesota 55435

---

**Prepared by:**

**Joyce Pickle, Larisa Bishop-Boros, and Donald Solick**

Western EcoSystems Technology, Inc.

200 South Second Street

Laramie, Wyoming 82070

**January 19, 2017**



## **EXECUTIVE SUMMARY**

In April 2016, Western EcoSystems Technology, Inc. initiated a bat acoustic survey for the proposed Crocker Wind Farm (Project) in Clark County, South Dakota. The bat acoustic survey conducted at the Project was designed to estimate levels of bat activity throughout the Project during spring, summer, and fall.

Acoustic surveys were conducted using SM3 bat detectors from April 14 to October 27, 2016, at two meteorological tower stations located in agricultural fields. The paired ground and raised met tower stations recorded a combined mean ( $\pm$  standard error) of  $1.84 \pm 0.22$  bat passes per detector-night. Detectors at fixed ground stations recorded 448 bat passes on 265 detector-nights for a mean ( $\pm$  standard error) of  $1.84 \pm 0.23$  bat passes per detector-night. Raised stations recorded a similar number (455) of bat passes on 265 detector nights for a mean of  $1.83 \pm 0.24$  per detector-night.

Low-frequency bat species, such as hoary bats and silver-haired bats, composed nearly 67% of bat passes overall. Four bat species and the *Myotis* group were identified at each of the four full-spectrum SM3 stations using the auto-classifier component of Kaleidoscope 3.1.7. Big brown bats were the least commonly recorded and hoary bats were the most commonly recorded species, present on 31% of detector nights.

Bat activity was also highest in the fall, peaking in early August. Activity during the standardized Fall Migration Period was  $2.80 \pm 0.42$  bat passes per detector-night at ground met tower stations. Most wind energy facilities in the Midwest region have reported fewer than five bat fatalities/megawatt (MW)/year (1.64 – 4.35 bats/MW/year). The results from this study suggest that bat fatality rates at the Project may be fewer than five bats/MW/year, occur mainly in the fall, and mainly be composed of low-frequency species such as hoary bats and silver-haired bats.

## **STUDY PARTICIPANTS**

### **Western EcoSystems Technology**

Joyce Pickle	Project Manager
Donald Solick	Bat Biologist
Larisa Bishop-Boros	Bat Data Analyst/Statistical Analyst; Report Compiler
Donald Solick	Data and Report Manager
Ray Tupling	Statistician
Jeff Fruhwirth	GIS Technician
Katie Michaels	Technical Editor
Jill Ottman	Technical Editor
Brittany Smith	Field Technician

## **REPORT REFERENCE**

Pickle, J., L. Bishop-Boros, and D.I. Solick. 2017. Bat Acoustic Survey Report for the Crocker Wind Farm, Clark County, South Dakota: April 14 to October 27, 2016. Prepared for Crocker Wind Farm, LLC, Edina, Minnesota. Prepared by Western EcoSystems Technology, Inc. (WEST), Laramie, Wyoming.

## TABLE OF CONTENTS

EXECUTIVE SUMMARY .....	i
INTRODUCTION .....	1
STUDY AREA .....	1
Overview of Bat Diversity .....	3
White-Nose Syndrome .....	4
METHODS .....	4
Bat Acoustic Surveys .....	4
Survey Stations .....	5
Survey Schedule .....	7
Data Collection and Call Analysis .....	7
Statistical Analysis .....	8
Risk Assessment .....	8
RESULTS .....	9
Bat Acoustic Surveys .....	9
Spatial Variation .....	10
Temporal Variation .....	13
Species Composition .....	16
DISCUSSION.....	17
REFERENCES .....	22

## LIST OF TABLES

Table 1. Land cover in the Crocker Wind Farm according to the United States Geological Survey National Land Cover Dataset (2001). .....	3
Table 2. Bat species with potential to occur within the Crocker Wind Farm (IUCN 2009; USFWF 2016 categorized by echolocation call frequency.....	4
Table 3. Results of acoustic bat surveys conducted at met tower stations within the Crocker Wind Farm from April 14 to October 27, 2016. Passes are separated by call frequency: high-frequency (HF) and low-frequency (LF). .....	12
Table 4. The number of bat passes per detector-night recorded at met tower stations in the Crocker Wind Farm during each season in 2016, separated by call frequency: high-frequency (HF), low-frequency (LF), and all bats (AB).....	13

Table 5. Periods of peak activity for high-frequency (HF), low-frequency (LF), and all bats at met tower stations in the Crocker Wind Farm for the study period April 14 to October 27, 2016. .... 13

Table 6. The number (percent) of presence/absence dates for detector-nights with bat species present by station recorded by the SM3 full-spectrum detectors at the Crocker Wind Farm using Kaleidoscope 3.1.7 ..... 17

**LIST OF FIGURES**

Figure 1. Land cover in the Crocker Wind Farm (USGS NLCD 2001).....2

Figure 2. Location of met tower stations in the Crocker Wind Farm. ....6

Figure 3. Operational status of bat microphones (n = 4) operating at the Crocker Wind Farm during each night of the study period April 14 to October 27, 2016. ....9

Figure 4. Number of high-frequency (HF) and low-frequency (LF) bat passes per detector-night recorded at SM3 met tower stations in the Crocker Wind Farm from April 14 to October 27, 2016. The bootstrapped standard errors are represented by the black error bars on the ‘All Bats’ columns. .... 10

Figure 5. Number of high-frequency (HF) and low-frequency (LF) bat passes per detector-night recorded at paired SM3 stations in the Crocker Wind Farm from April 14 to October 27, 2016. .... 11

Figure 6. Seasonal bat activity by high-frequency (HF), low-frequency (LF), and all bats at met tower stations in the Crocker Wind Farm from April 14 to October 27, 2016. The bootstrapped standard errors are represented on the ‘All Bats’ columns. .... 14

Figure 7. Weekly patterns of bat activity by high-frequency (HF), low-frequency (LF), and all bats at met tower stations in the Crocker Wind Farm for the study period April 14 to October 27, 2016. .... 15

Figure 8. Weekly patterns of bat activity recorded by paired SM3 detectors at ground and raised met tower stations in the Crocker Wind Farm from April 14 – October 27, 2016. .... 16

Figure 9. Fatality rates for bats (number of bats per MW per year) from publicly-available wind energy facilities in the Midwest and Rocky Mountains regions of North America. ....20

Figure 9. (continued) Fatality rates for bats (number of bats per MW per year) from publicly-available wind energy facilities in the Midwest and Rocky Mountains regions of North America. ....21

**LIST OF APPENDICES**

Appendix A: North American Fatality Summary Tables

## **INTRODUCTION**

Crocker Wind Farm, LLC is considering the development of the Crocker Wind Farm (Project) in Clark County, South Dakota. Crocker Wind Farm, LLC contracted Western EcoSystems Technology, Inc. (WEST) to complete a study of bat activity following the recommendations of the U.S. Fish and Wildlife Service (USFWS) Land-based Wind Energy Guidelines (USFWS 2012a) and Kunz et al. (2007a). WEST conducted acoustic monitoring surveys to estimate levels of bat activity throughout the Project during the spring, summer, and fall. The following report describes the results of acoustic monitoring surveys conducted at the Project between April 14 and October 27, 2016.

## **STUDY AREA**

The proposed Project is approximately 31,131 acres (48.6 square miles) in size and lies just southwest of Bradley, South Dakota, in Clark County (Figure 1, Table 1). The landscape within the Project is flat to rolling with elevation ranges from 1,486.3 – 1,918.6 feet ([ft]; 453 – 585 meters [m]). Historically, the Project's landscape was dominated by grasslands but has since been converted largely to agricultural use with crop production and livestock grazing the primary practices. Trees and shrubs can be found around farmsteads, within planted shelter belts, and along/within drainages. Wetlands and lakes are scattered throughout the Project, with some being man-made.

Hay and pasturelands are the most abundant land cover/land use within the Project, making up nearly 37% of the area, followed by herbaceous plants (33%). The majority of the remaining landscape is comprised of cultivated crops (16%), open water (10%), and developed open space (2%). Small amounts (<0.5%) of deciduous forest, emergent herbaceous wetlands, shrub/scrub, developed low, medium, and high intensity lands, and woody wetlands are also present within the Project (Fry et al. 2011; Figure 1). Common agricultural crops include hay, corn, and soybeans.

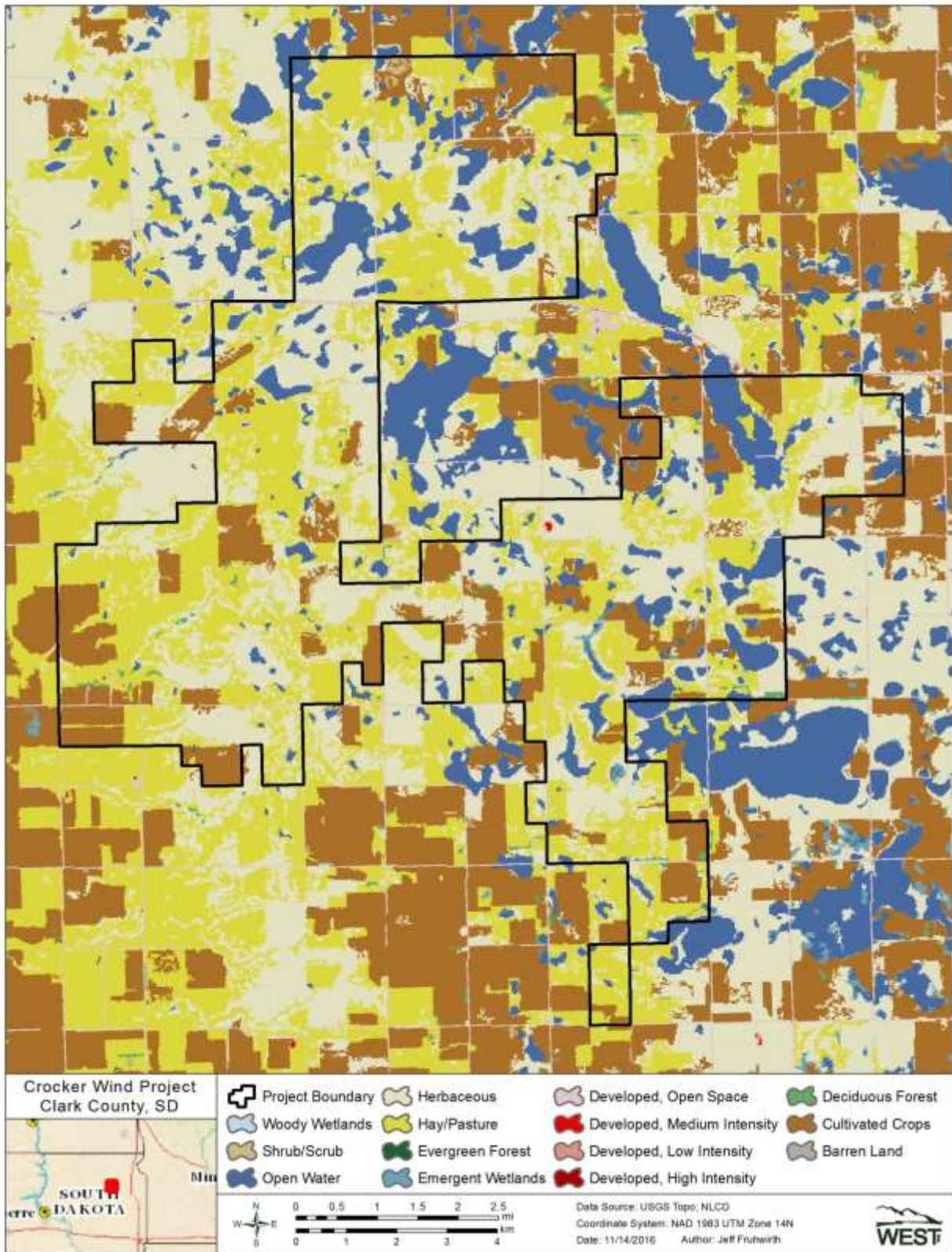


Figure 1. Land cover in the Crocker Wind Farm (USGS NLCD 2001).



**Table 1. Land cover in the Crocker Wind Farm according to the United States Geological Survey National Land Cover Dataset (2001).**

<b>Land Cover</b>	<b>Acres</b>	<b>% Composition</b>
Hay/Pasture	11,441.2	36.8%
Herbaceous	10,357.0	33.3%
Cultivated Crops	5,030.2	16.2%
Open Water	3,253.6	10.5%
Developed, Open Space	697.9	2.2%
Deciduous Forest	140.5	0.5%
Emergent Herbaceous Wetlands	103.2	0.3%
Shrub/Scrub	83.4	0.3%
Developed, Low Intensity	16.6	0.1%
Developed, Medium Intensity	4.2	0.0%
Woody Wetlands	2.2	0.0%
Developed, High Intensity	1.0	0.0%
<b>Total</b>	<b>31,131.1</b>	<b>100.00%</b>

### Overview of Bat Diversity

Six species of bats potentially occur at the Project and all six species are known to have been killed at wind energy facilities (Table 2). *Myotis septentrionalis*, the northern long-eared bat (NLEB), is federally listed as threatened (USFWS 2016); the habitat analysis and summer presence/absence NLEB survey results are covered in a separate report. The NLEB and silver-haired bat are considered rare in the state by the South Dakota Natural Heritage Program (SDGFP 2016, Table 2).

**Table 2. Bat species with potential to occur within the Crocker Wind Farm (IUCN 2009; USFWS 2016 categorized by echolocation call frequency.**

Common Name	Scientific Name
<b>High-Frequency (&gt; 30 kHz)</b>	
eastern red bat <sup>1,2</sup>	<i>Lasiurus borealis</i>
little brown bat <sup>1</sup>	<i>Myotis lucifugus</i>
northern long-eared bat <sup>1,3,4</sup>	<i>Myotis septentrionalis</i>
<b>Low-Frequency (&lt; 30 kHz)</b>	
big brown bat <sup>1</sup>	<i>Eptesicus fuscus</i>
silver-haired bat <sup>1,2,4</sup>	<i>Lasionycteris noctivagans</i>
hoary bat <sup>1,2</sup>	<i>Lasiurus cinereus</i>

<sup>1</sup> species known to have been killed at wind energy facilities;

<sup>2</sup> long-distance migrant;

<sup>3</sup> federally threatened species (USFWS 2016); and

<sup>4</sup> state-listed as rare (SDGPF 2016).

## White-Nose Syndrome

Bats that hibernate in North America are being severely impacted by white-nose syndrome (WNS), an infectious mycosis in which bats are infected with a psychrophilic fungus from Europe (*Pseudogymnoascus* [formerly *Geomyces*] *destructans*) that is thought to act as a chronic disturbance during hibernation (USGS 2010; Minnis and Lindner 2013). Infected bats arouse frequently from hibernation, leading to premature loss of fat reserves and atypical behavior, which in turn leads to starvation prior to spring emergence (Boyles and Willis 2010; Reeder et al. 2012; Warnecke et al. 2012). WNS was first discovered in New York State in 2006 and by 2013 had rapidly spread to over 115 caves and mines and is now confirmed in 29 states and the causative fungus has been identified in an additional 3 states. To date, the full WNS has spread north into five Canadian provinces, reaching as far south as Alabama and as far west as Washington (Heffernan 2016). It is estimated that between 5.7 and 6.7 million bats have died as a result of WNS (USFWS 2012b). WNS is the primary reason the USFWS recently listed the NLEB as threatened under the Endangered Species Act (USFWS 2015), and is currently reviewing the status of the little brown bat. Neither WNS nor the causative fungal agent have been detected as of 2016 in South Dakota; however the fungus has been detected in the neighboring states of Minnesota, Iowa, and Nebraska.

## METHODS

### Bat Acoustic Surveys

WEST conducted acoustic monitoring studies to estimate levels of bat activity throughout the Project during the study period. Although it remains unclear whether baseline acoustic data are adequate to predict post-construction fatality (Hein et al. 2013a), ultrasonic detectors do collect information on the spatial distribution, timing, and species composition that can provide insights into the possible risk of wind development on bats (Kunz et al. 2007a; Britzke et al. 2013) and inform potential mitigation strategies (Weller and Baldwin 2012).

### *Survey Stations*

Two Song Meter SM3 full-spectrum ultrasonic detectors (hereafter “SM3”; Wildlife Acoustics, Concord, MA) were used during the study. Each SM3 detector is equipped with two microphone ports. The SM3 detectors were placed at meteorological (met) towers with one microphone at ground level (approximately 3 m [10 ft] above ground level) and another at the proposed rotor-swept height (approximately 45 m [148 ft] above ground level; Figure 2). Species activity levels and composition can vary with altitude (Baerwald and Barclay 2009; Collins and Jones 2009; Müller et al. 2013). Therefore, it can be useful to monitor activity at different heights (Kunz et al. 2007b). Ground-based microphones likely detect a more complete sample of the bat species present within the Project, whereas elevated microphones may give a more accurate assessment of risk to bat species flying at rotor swept heights (Kunz et al. 2007b; Müller et al. 2013; but see Amorim et al. 2012). Both met tower stations were located in agricultural habitat (Figure 2) and are representative of potential turbine locations.

The SM3 detectors and external batteries deep-cycle were housed inside large tool-boxes for protection from livestock and wildlife. The ground microphone was raised on polyvinyl chloride (commonly PVC) pole to improve the quality of sound recordings for species identification. Raised SM3 microphones were elevated on met towers using a pulley system. The SM3 microphone is weather resistant, and does not require protection, however, the microphone was oriented parallel to the ground to minimize the potential for rain damage.

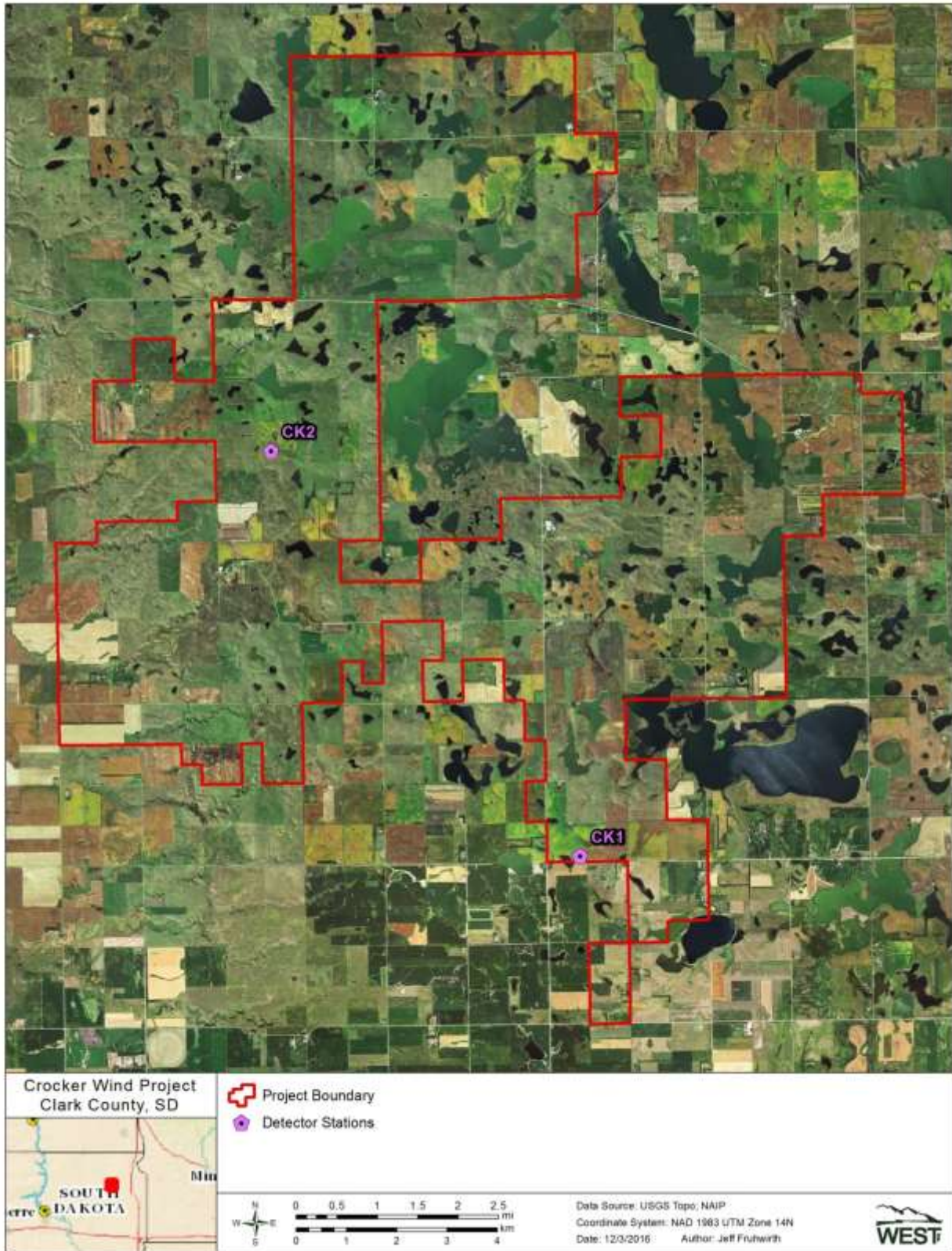


Figure 2. Location of met tower stations in the Crocker Wind Farm.

### *Survey Schedule*

Bats were surveyed in the Project from April 14 to October 27, 2016, and detectors were programmed to turn on approximately 30 minutes before sunset and turn off approximately 30 minutes after sunrise each night. To highlight seasonal activity patterns, the study was divided into three survey periods: spring (April 14 – May 31), summer (June 1 – July 31), and fall (August 1 – October 27). Mean bat activity was also calculated for a standardized Fall Migration Period (FMP), defined here as July 30 – October 14. The FMP was defined by WEST as a standard for comparison with activity from other wind energy facilities. During this time bats begin moving toward wintering areas, and many species of bats initiate reproductive behaviors (Cryan 2008). This period of increased landscape-scale movement and reproductive behavior is often associated with increased levels of bat fatalities at operational wind energy facilities (Arnett et al. 2008; Arnett and Baerwald 2013).

### **Data Collection and Call Analysis**

The Song Meter SM3 is a full-spectrum bat detector that records complete acoustic waveforms by sampling sound waves at 192 kilohertz (kHz). This high sampling rate enables the detector to record sound amplitude data at all frequencies up to 96 kHz and to make high resolution recordings. The high quality recordings produced by the SM3 detector provide more information for making species identifications than SM3 detectors at the cost of higher data storage requirements and slower data analysis.

Identification of calls was completed with the automated identification feature in program Kaleidoscope 3.1.7 (Wildlife Acoustics, Concord, Massachusetts) using the Bats of North America classifier 2.1.0. It utilizes Hidden Markov Models and other statistical methods known for their application in temporal pattern recognition such as speech analysis, handwriting analysis, and DNA sequencing (Agranat 2012). Despite the capabilities of Kaleidoscope, many bat passes cannot be identified with certainty, either because only call fragments were recorded due to the distance between the bat and microphone or because many bat species produce similar calls with overlapping call characteristics that often cannot be distinguished. The Kaleidoscope output was used to generate a list of species that may have been present in the Project.

The full-spectrum data recorded by the SM3 were also transformed into zero-crossing data using the program Kaleidoscope 3.1.7 (Wildlife Acoustics, Inc., Concord, Massachusetts), allowing data to be viewed in Analoek<sup>®</sup> software as digital sonograms that show changes in echolocation call frequency over time. Frequency versus time displays were used to separate bat calls from other types of ultrasonic noise (e.g., wind, insects, etc.) and to determine the call frequency category.

For each survey location, bat passes were sorted into two groups based on their minimum frequency. High-frequency (HF) bats such as eastern red bats, evening bats, and *Myotis* species have minimum frequencies greater than 30 kHz. Low-frequency (LF) bats such as big brown bats, silver-haired bats, and hoary bats typically emit echolocation calls with minimum

frequencies below 30 kHz. HF and LF species that may occur in the study area are listed in Table 2.

### **Statistical Analysis**

The standard metric used for measuring bat activity is the number of bat passes per detector-night, and this metric was used as an index of bat activity in the project area. A bat pass was defined as a sequence of at least two echolocation calls (pulses) produced by an individual bat with no pause between calls of more than one second (Fenton 1980). A detector-night was defined as one detector operating for one entire night. The terms bat pass and bat call are used interchangeably. Bat passes per detector-night was calculated for all bats, and for HF and LF bats. Bat pass rates represent indices of bat activity and do not represent numbers of individuals. The number of bat passes was determined by an experienced bat biologist using Analook.

The period of peak sustained bat activity was defined as the seven-day period with the highest average bat activity. If multiple seven-day periods equaled the peak sustained bat activity rate, all dates in these seven-day periods were reported. This and all multi-detector averages in this report were calculated as an unweighted average of total activity at each detector.

### **Risk Assessment**

To assess the likelihood of relatively low or relatively high bat fatalities, bat activity recorded in the Project was compared to existing data at other wind energy facilities in the Midwest and Rocky Mountains. Given the relatively small number of publicly available studies and the significant ecological differences between geographically dispersed facilities, the risk assessment is qualitative, rather than quantitative. Among studies measuring both activity and fatality rates, most data were collected during the fall using AnaBat detectors placed near the ground. To make comparisons to the existing publicly available data, this report uses the activity rate recorded at ground-level met tower SM3 stations during the FMP as a standard for comparison with activity data from other wind energy facilities. However, full-spectrum detectors such as the SM3 units used at Crocker typically record more bat passes per detector-night on average than AnaBat (zero-cross) units, so direct comparison between activity rates should be done with caution.

Given the differences in microphone sensitivity and data processing algorithms between full-spectrum and zero-cross detectors, activity levels recorded by SM3 detectors (used at Crocker) are not readily comparable to activity recorded by AnaBat detectors because the two detectors sample a different volume of airspace and process the data differently (Solick et al. 2011, Adams et al. 2012). Although the detection range of ultrasonic detectors depends on a number of factors (e.g., echolocation call characteristics, microphone sensitivity, habitat, the orientation of the bat, atmospheric conditions; Limpens and McCracken 2004), the SM2 detector (similar to the SM3 detector used at Crocker) was shown to detect signals at a greater distance than the zero-cross AnaBat detector (Adams et al. 2012). Under controlled conditions, the detection range for playback of synthetic echolocation calls for 55 kHz signals (HF) was similar for SM2

and AnaBat detectors (approximately 7 m [23 ft]), while for 25 kHz signals (LF) the detection range for AnaBat and SM2 detectors was approximately 15 m (49 ft) and 22 m (72 ft), respectively (Adams et al. 2012), meaning that, all else equal, the full-spectrum detector is likely to record more bat calls than the zero-cross detector (i.e., an SM3 unit such as used at Crocker generally would be expected to record higher number of calls per detector night than an AnaBat in the same location).

## RESULTS

### Bat Acoustic Surveys

Bat activity was monitored at two paired sampling locations for a total of 530 detector-nights between April 14 and October 27, 2016 (Table 3). SM3 units were operating for 78.2% of the sampling period (Figure 3). The primary causes of lost data were equipment malfunctions and data transfer errors. SM3 units overall recorded 903 bat passes for a mean of  $1.84 \pm 0.22$  bat passes per detector night (Table 3).

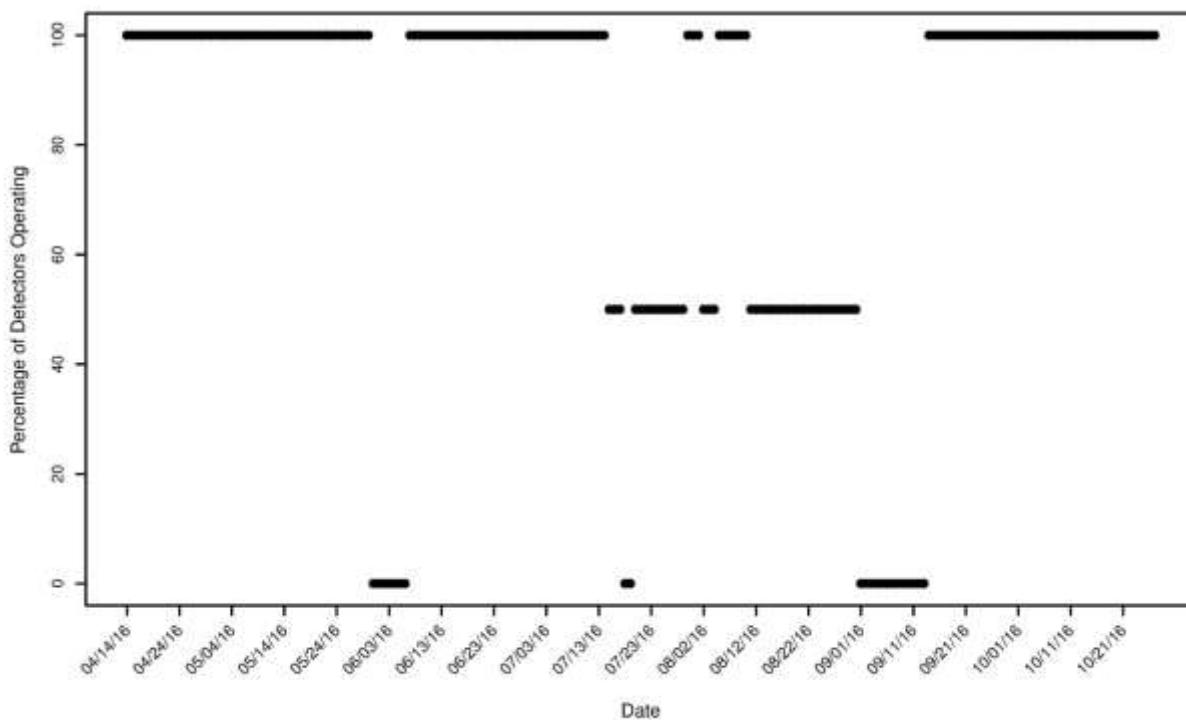
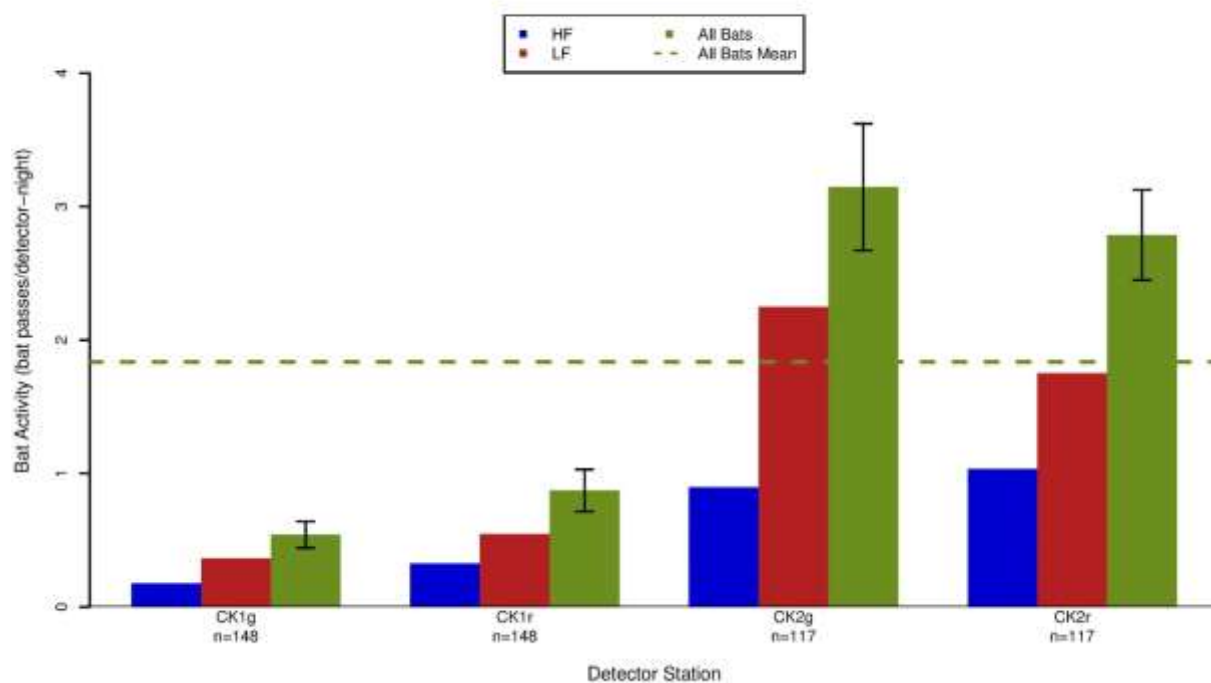


Figure 3. Operational status of bat microphones (n = 4) operating at the Crocker Wind Farm during each night of the study period April 14 to October 27, 2016.



*Spatial Variation*

SM3 units at ground met tower stations recorded 448 bat passes on 265 detector-nights for a mean ( $\pm$  standard error) of  $1.84 \pm 0.23$  bat passes per detector-night. Raised stations recorded similar activity with 455 bat passes on 265 detector-nights for a mean of  $1.83 \pm 0.24$  bat passes per detector-night (Table 3, Figure 4). At the paired stations, the ground detector at station CK1 recorded slightly more bat passes than the raised detector, while the opposite occurred at CK2 (Figure 5). It should be noted that, given the increased detection distance for full-spectrum microphones, it is possible that bats flying near met towers were recorded simultaneously by both ground and raised microphones.



**Figure 4.** Number of high-frequency (HF) and low-frequency (LF) bat passes per detector-night recorded at SM3 met tower stations in the Crocker Wind Farm from April 14 to October 27, 2016. The bootstrapped standard errors are represented by the black error bars on the 'All Bats' columns.



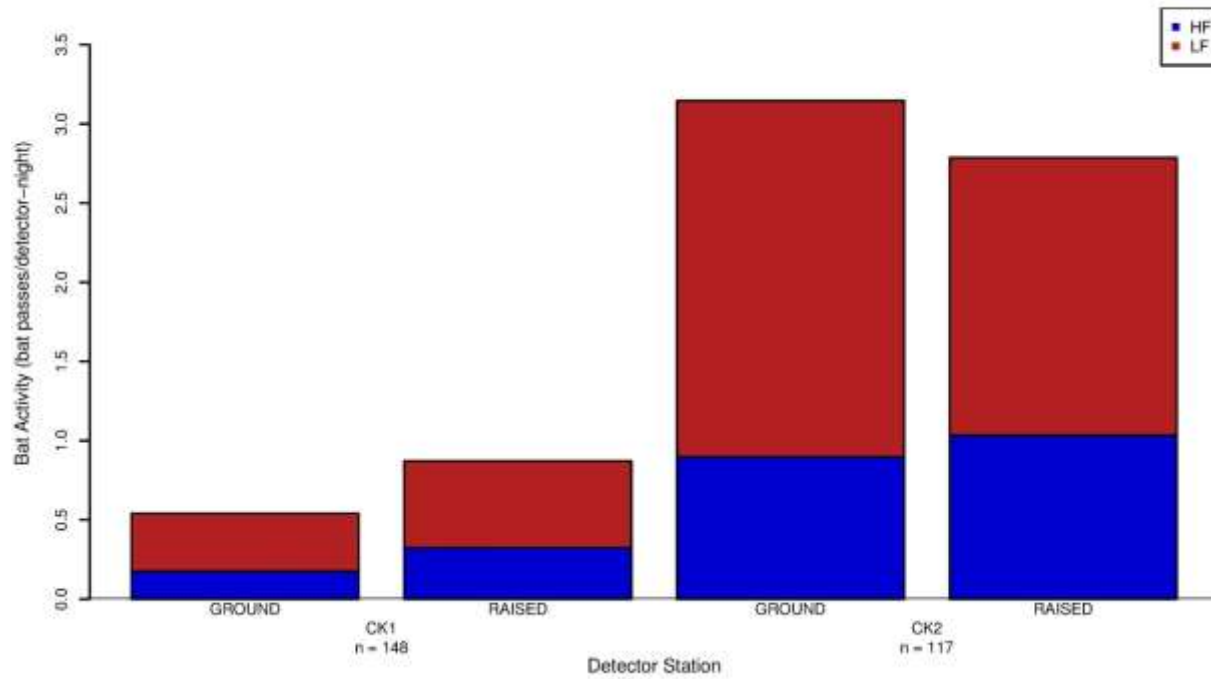


Figure 5. Number of high-frequency (HF) and low-frequency (LF) bat passes per detector-night recorded at paired SM3 stations in the Crocker Wind Farm from April 14 to October 27, 2016.

Table 3. Results of acoustic bat surveys conducted at met tower stations within the Crocker Wind Farm from April 14 to October 27, 2016. Passes are separated by call frequency: high-frequency (HF) and low-frequency (LF).

<b>SM3</b>							
<b>Station</b>	<b>Type</b>	<b>Habitat</b>	<b># of HF Bat Passes</b>	<b># of LF Bat Passes</b>	<b>Total Bat Passes</b>	<b>Detector- Nights</b>	<b>Bat Passes/ Night<sup>***</sup></b>
CK1g	ground	cropland	26	54	80	148	0.54 ± 0.10
CK1r	raised	cropland	48	81	129	148	0.87 ± 0.16
CK2g	ground	cropland	105	263	368	117	3.15 ± 0.48
CK2r	raised	cropland	121	205	326	117	2.79 ± 0.34
<b>Total Ground Met Tower Stations</b>			<b>131</b>	<b>317</b>	<b>448</b>	<b>265</b>	<b>1.84 ± 0.23</b>
<b>Total Raised Met Tower Stations</b>			<b>169</b>	<b>286</b>	<b>455</b>	<b>265</b>	<b>1.83 ± 0.24</b>
<b>Total</b>			<b>300</b>	<b>603</b>	<b>903</b>	<b>530</b>	<b>1.84 ± 0.22</b>

<sup>\*\*\*</sup> ± bootstrapped standard error.

*Temporal Variation*

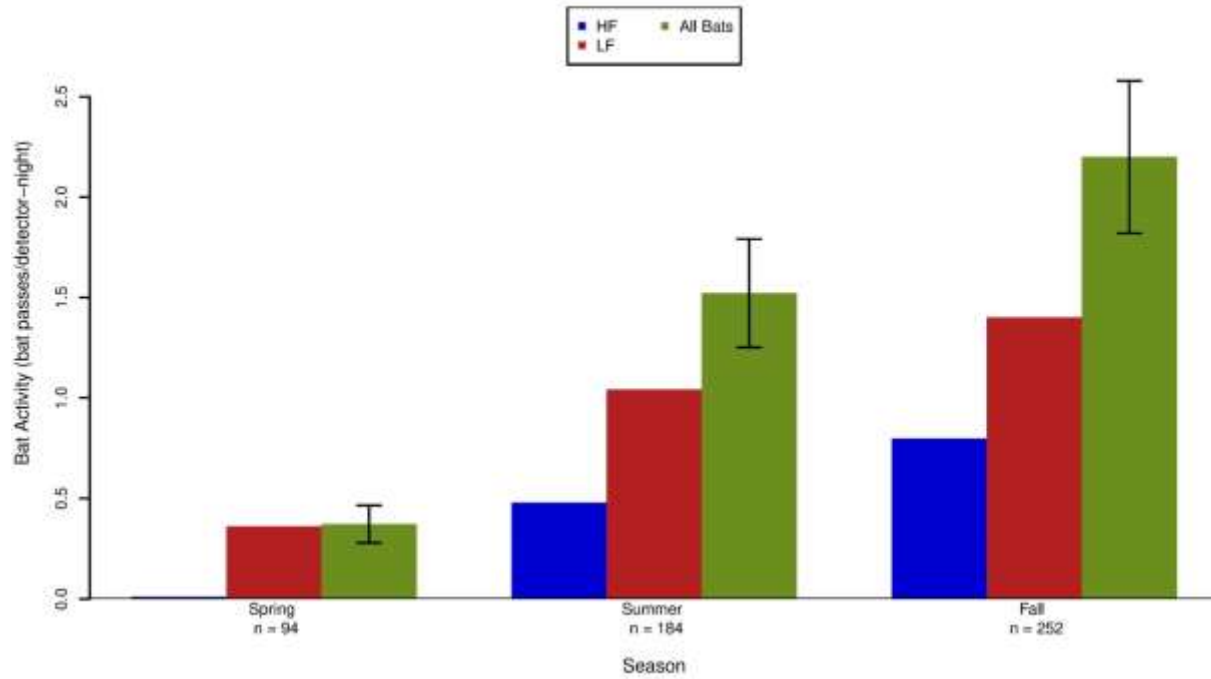
Bat activity at both met tower stations was highest in the fall (Table 4; Figure 6). Weekly acoustic activity at met towers was relatively low from April through mid-July, with activity increasing in late July and peaking in early August (9.80 bat passes per detector-night; Table 5). Activity decreased in late August through the end of the study period (Figure 7). At paired stations weekly activity was similar between ground and raised microphones throughout the study period (Figure 8).

**Table 4. The number of bat passes per detector-night recorded at met tower stations in the Crocker Wind Farm during each season in 2016, separated by call frequency: high-frequency (HF), low-frequency (LF), and all bats (AB).**

Station	Call Frequency	Spring	Summer	Fall	Fall Migration Period
		April 14 – May 31	June 1 – Jul 31	Aug 1 – Oct 27	Jul 30 – Oct 14
CK1g	LF	0.38	0.26	0.43	0.51
	HF	0.02	0.19	0.29	0.38
	AB	0.4	0.44	0.72	0.89
CK1r	LF	0.34	0.47	0.78	1.04
	HF	0	0.14	0.72	0.91
	AB	0.34	0.6	1.5	1.96
CK2g	LF	NA	1.94	2.47	3.3
	HF	NA	0.63	1.09	1.4
	AB	NA	2.57	3.56	4.7
CK2r	LF	NA	1.51	1.93	2.56
	HF	NA	0.96	1.09	1.39
	AB	NA	2.47	3.01	3.95
<b>Ground Total</b>	LF	<b>0.38 ± 0.11</b>	<b>1.10 ± 0.21</b>	<b>1.45 ± 0.25</b>	<b>1.90 ± 0.31</b>
	HF	<b>0.02 ± 0.02</b>	<b>0.41 ± 0.09</b>	<b>0.69 ± 0.13</b>	<b>0.89 ± 0.16</b>
	AB	<b>0.40 ± 0.11</b>	<b>1.51 ± 0.27</b>	<b>2.14 ± 0.34</b>	<b>2.80 ± 0.42</b>
<b>Raised Total</b>	LF	<b>0.34 ± 0.10</b>	<b>0.99 ± 0.23</b>	<b>1.35 ± 0.25</b>	<b>1.80 ± 0.29</b>
	HF	<b>0.00 ± 0.00</b>	<b>0.55 ± 0.13</b>	<b>0.91 ± 0.17</b>	<b>1.15 ± 0.20</b>
	AB	<b>0.34 ± 0.10</b>	<b>1.54 ± 0.33</b>	<b>2.26 ± 0.39</b>	<b>2.95 ± 0.45</b>
<b>Overall</b>	LF	<b>0.36 ± 0.09</b>	<b>1.04 ± 0.20</b>	<b>1.40 ± 0.26</b>	<b>1.85 ± 0.31</b>
	HF	<b>0.01 ± 0.01</b>	<b>0.48 ± 0.10</b>	<b>0.80 ± 0.14</b>	<b>1.02 ± 0.17</b>
	AB	<b>0.37 ± 0.09</b>	<b>1.52 ± 0.27</b>	<b>2.20 ± 0.38</b>	<b>2.88 ± 0.45</b>

**Table 5. Periods of peak activity for high-frequency (HF), low-frequency (LF), and all bats at met tower stations in the Crocker Wind Farm for the study period April 14 to October 27, 2016.**

Species Group	Start Date of Peak Activity	End Date of Peak Activity	Bat Passes per Detector-Night
HF	August 1	August 7	3.06
LF	August 9	August 15	6.77
All Bats	August 9	August 15	9.80



**Figure 6. Seasonal bat activity by high-frequency (HF), low-frequency (LF), and all bats at met tower stations in the Crocker Wind Farm from April 14 to October 27, 2016. The bootstrapped standard errors are represented on the 'All Bats' columns.**

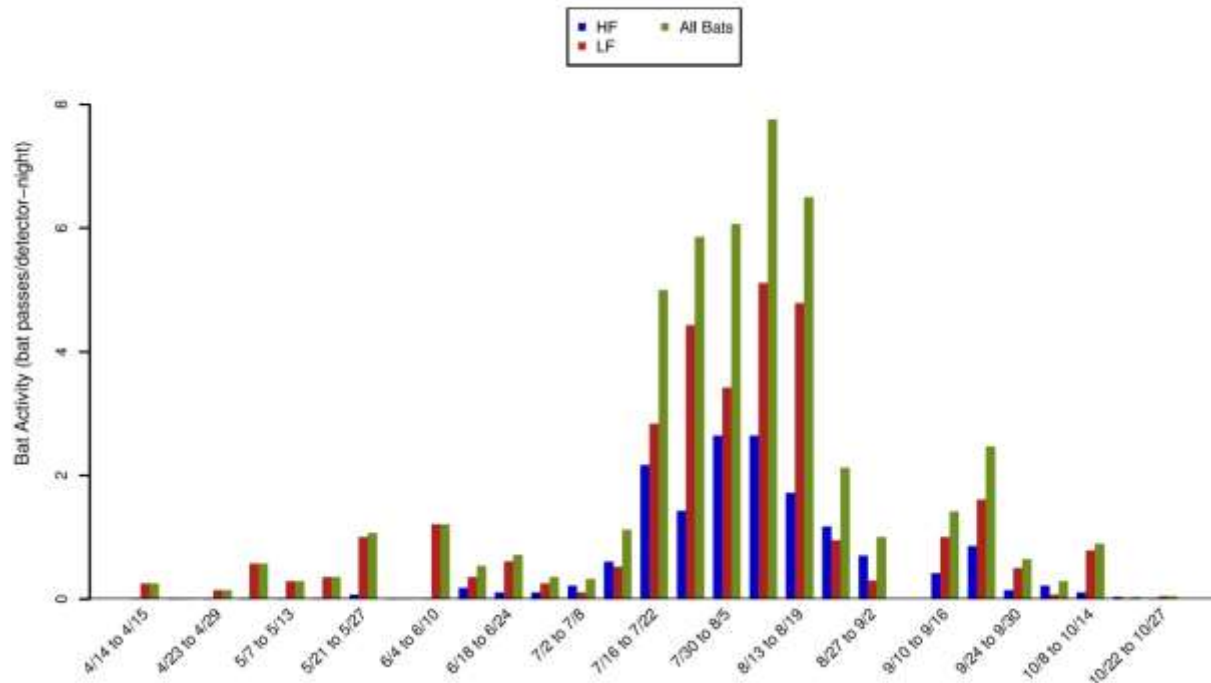


Figure 7. Weekly patterns of bat activity by high-frequency (HF), low-frequency (LF), and all bats at met tower stations in the Crocker Wind Farm for the study period April 14 to October 27, 2016.

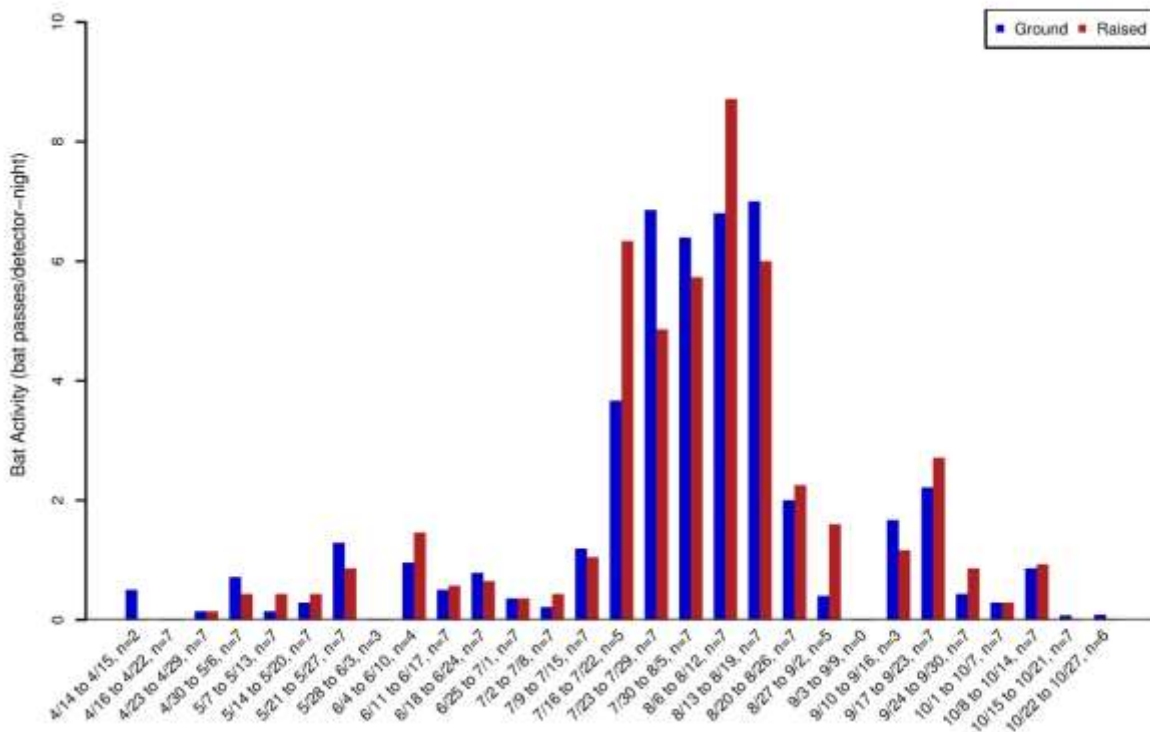


Figure 8. Weekly patterns of bat activity recorded by paired SM3 detectors at ground and raised met tower stations in the Crocker Wind Farm from April 14 – October 27, 2016.

### Species Composition

Low-frequency bats (e.g., big brown bats, hoary bats, and silver-haired bats; Table 2) were the most commonly recorded species (66.8%) among all stations (Table 3), suggesting that these species are relatively more abundant than HF species in the Project Area. High-frequency bats (e.g., tri-colored bats, eastern red bats, and *Myotis* species) composed 33.2% of bat passes recorded at met tower stations (Table 2, Table 3). Overall and LF bat activity peaked between August 9 and 15 whereas HF bat activity peaked slightly earlier from August 1 – 7 (Table 5, Figure 7).

Four individual bat species and the *Myotis* group were identified at each of the four detectors using the auto-classifier component of Kaleidoscope 3.1.7 (Table 6). The hoary bat was the most frequently recorded species overall, present on 31% of detector-nights, while the big brown bat was the least frequently recorded species overall, present on just 7% of operational detector-nights. *Myotis* group presence was highest at CK2g where this group was present on 24% of detector-nights.

**Table 6. The number (percent) of presence/absence dates for detector-nights with bat species present by station recorded by the SM3 full-spectrum detectors at the Crocker Wind Farm using Kaleidoscope 3.1.7**

Common Name	CK1g	CK1r	CK2g	CK2r	Total
<b>High-Frequency (&gt; 30 kHz)</b>					
eastern red bat	14 (9)	26 (18)	33 (28)	30 (26)	103 (19)
<i>Myotis</i> species	10 (7)	14 (9)	28 (24)	15 (13)	67 (13)
<b>Low-Frequency (&lt; 30 kHz)</b>					
big brown bat	7 (5)	14 (9)	11 (9)	6 (5)	38 (7)
hoary bat	24 (16)	43 (29)	48 (41)	50 (43)	165 (31)
silver-haired bat	29 (20)	42 (28)	34 (29)	31 (26)	136 (26)

## DISCUSSION

Bat fatalities have been discovered at most wind energy facilities monitored in North America, ranging from 0 (Chatfield and Bay 2014) to 40.2 bat fatalities/megawatt (MW)/year (Hein et al. 2013a; Appendix A). In 2012, an estimated 600,000 bats died as a result of interactions with wind turbines in the U.S. (Hayes 2013). Proximate causes of bat fatalities are primarily due to collisions with moving turbine blades (Grodsky et al. 2011; Rollins et al. 2012) but to a limited extent may also be caused by barotrauma (Baerwald et al. 2008). The underlying reasons for why bats come near turbines are still largely unknown (Cryan and Barclay 2009). To date, post-construction monitoring studies of wind energy facilities show that a) migratory tree-roosting species (e.g., eastern red bat [*Lasiurus borealis*], hoary bat [*Lasiurus cinereus*], and silver-haired bat [*Lasionycteris noctivagans*]) compose approximately 78% of reported bat fatalities; b) the majority of fatalities occur during the fall migration season (August and September); and c) most fatalities occur on nights with relatively low wind speeds (e.g., < 6.0 m/s; Arnett et al. 2008; Arnett and Baerwald 2013; Arnett et al. 2013).

It is generally expected that pre-construction bat activity is positively related to post-construction bat fatalities (Kunz et al. 2007b). However, to date, relatively few publicly available studies documenting bat passes per detector-night at proposed wind energy facilities are available to compare to publicly available studies reporting bat fatality rates (Appendix A). Given the limited availability of pre- and post-construction data sets, differences in protocols among studies (Ellison 2012), and significant ecological differences between geographically diverse facilities, the relationship between activity and fatalities has not yet been empirically established (Hein et al. 2013a), though Baerwald and Barclay (2009) found a significant positive association between pass rates measured at 30 m and fatality rates for hoary and silver-haired bats across five sites in southern Alberta.

However, on a continental scale, a similar relationship has proven difficult to establish. The relatively few studies that have estimated both pre-construction activity and post-construction fatalities trend toward a positive association between activity and fatality rates, but they lack statistically significant correlations. Hein et al. (2013a) compiled data from wind projects that included both pre- and post-construction data from the same projects, as well as pre- and post-construction data from facilities within the same regions to assess if pre-construction acoustic

activity predicted post-construction fatality rates. Based on data from 12 sites that had both pre- and post-construction data, they did not find a statistically significant relationship ( $p=0.07$ ), although the trend was in the expected direction (i.e., low activity was generally associated with low fatalities and vice-versa). They concluded therefore, that pre-construction acoustic data could not currently predict bat fatalities, but acknowledged that the data set was limited and additional data may indicate a stronger relationship. Therefore, the current approach to assessing the risk to bats requires a qualitative analysis of activity levels, spatial and temporal relationships, species composition, and comparison to regional fatality patterns.

Mean bat activity during the FMP at ground met tower station SM3 detectors ( $2.80 \pm 0.42$  bat passes per detector-night; Table 4) was lower than rates established at other upper Midwest wind projects using AnaBat units (which generally record fewer bat passes). Anabat-derived bat activity rate estimates include the national median (7.68) and the majority of studies available from the Midwest (6.97) and Rocky Mountains (2.2; Appendix A). Although it is expected that bat activity data collected using SM3 detectors is not directly comparable with activity data from the studies in Appendix A, all of which used AnaBat detectors, it is assumed that SM3 detectors would detect more bat calls due to a greater detection distance and the fact that noise from insects or other sources does not inhibit detection of bats for full-spectrum detectors (Adams et al. 2012). Therefore, the activity data collected by SM3 detectors in this study provides a conservative risk assessment, and the fact that even with the SM3 units the bat passes were low indicates a relatively low use site.

Overall bat activity was highest within the Project during the fall peaking in early to mid-August. This timing is close to peak fatality periods for most wind energy facilities in the U.S. (Arnett et al. 2008), and suggests that bat fatalities at the Project will be highest during the fall and may consist largely of migrating individuals.

Activity by LF bat species composed nearly 67% of bat passes recorded in the Project. Hoary and silver-haired bats are usually the most common LF species found during carcass searches (Arnett et al. 2008; Arnett and Baerwald 2013). Activity by HF bats composed approximately 33% of bat passes recorded at all stations, suggesting lower relative abundance of species such as eastern red bats and *Myotis* species. *Myotis* are recorded less commonly than other species as fatalities at most post-construction studies of wind energy facilities (Kunz et al. 2007b; Arnett et al. 2008), with a few notable exceptions (Kerns and Kerlinger 2004; Jain 2005; Brown and Hamilton 2006a; Gruver et al. 2009a). Given that hoary bats, eastern red bats, and silver-haired bats are among the most common bat fatalities at many facilities (Arnett et al. 2008; Arnett and Baerwald 2013), it is expected that these three species would be the most common fatalities at the Project.

The closest operating wind-energy facility to the Project with public post-construction fatality data is the Buffalo Ridge II Wind Facility, located approximately 60 miles from the Project in Brookings County, South Dakota. At Buffalo Ridge II the pre-construction bat activity rate was a relatively low rate of 1.75 bats/detector-night (Derby et al. 2008) and the casualty rate was also relatively low at 2.81 bats/MW/study period (Derby et al. 2012a). Due to the similar low rates of



pre-construction bat activity, it is possible that Crocker will have similarly low fatality rates, although the habitat at Buffalo Ridge II (primarily corn and soybeans, with limited water features and limited wooded habitat) is somewhat different than Crocker (primarily grassland, with more prevalence of wetlands and open water, also with limited wooded habitat). The pre-construction bat studies completed at the Project will add to the growing body of research regarding the impacts of wind energy development on bats and will provide a valuable comparison to post-construction studies to be completed at Project.

# Regional Bat Fatality Rates

Midwest, Rocky Mountains

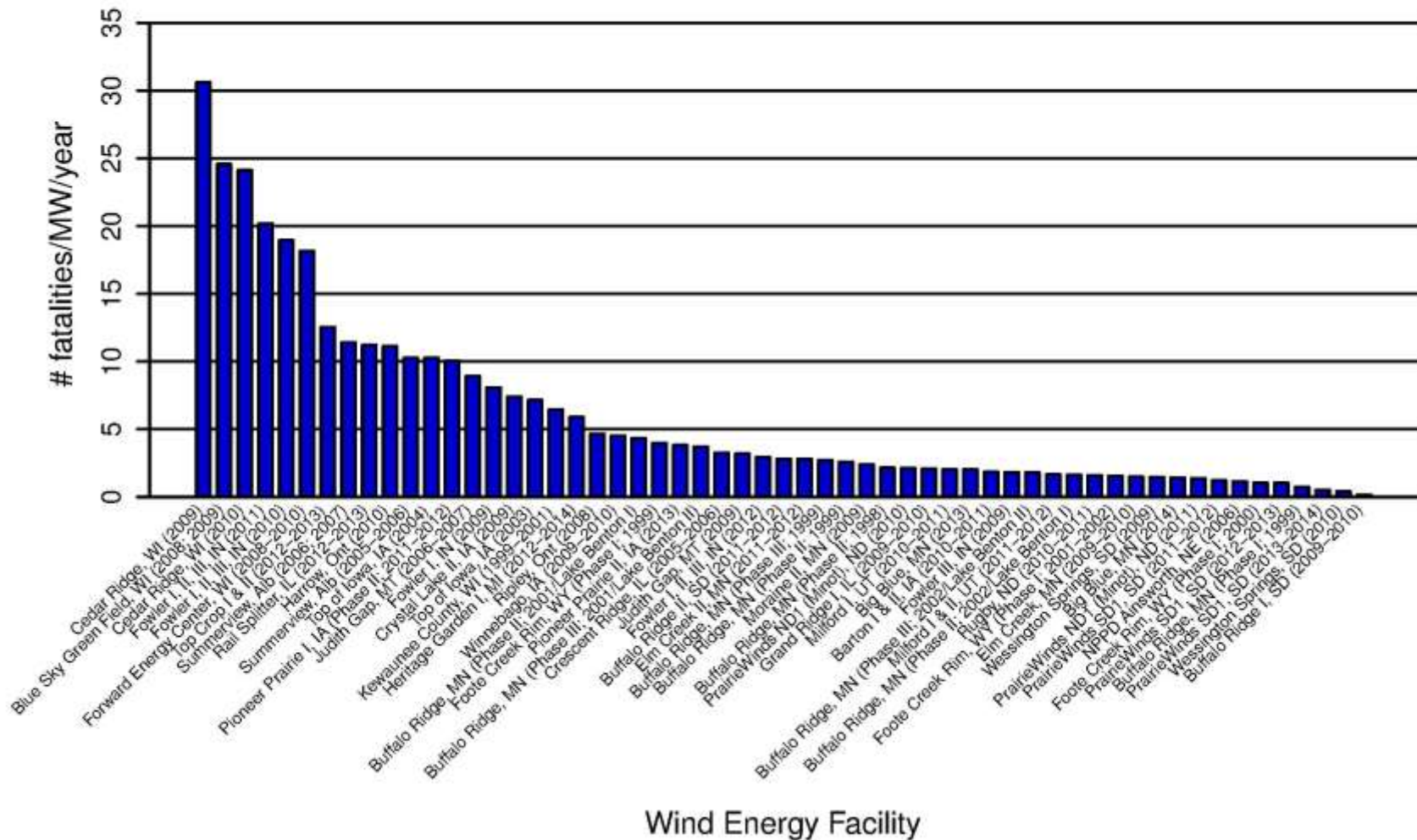


Figure 9. Fatality rates for bats (number of bats per MW per year) from publicly-available wind energy facilities in the Midwest and Rocky Mountains regions of North America.

**Figure 9. (continued) Fatality rates for bats (number of bats per MW per year) from publicly-available wind energy facilities in the Midwest and Rocky Mountains regions of North America.**

Data from the following sources			
Project, Location	Reference	Project, Location	Reference
Cedar Ridge, WI (09)	BHE Environmental 2010	Elm Creek II, MN (11-12)	Derby et al. 2012b
Blue Sky Green Field, WI (08; 09)	Gruver et al. 2009b	Buffalo Ridge, MN (Phase III; 99)	Johnson et al. 2000
Cedar Ridge, WI (10)	BHE Environmental 2011	Buffalo Ridge, MN (Phase II; 99)	Johnson et al. 2000
Fowler I, II, III, IN (11)	Good et al. 2012	Moraine II, MN (09)	Derby et al. 2010d
Fowler I, II, III, IN (10)	Good et al. 2011	Buffalo Ridge, MN (Phase II; 98)	Johnson et al. 2000
Forward Energy Center, WI (08-10)	Grodsky and Drake 2011	PrairieWinds ND1 (Minot), ND (10)	Derby et al. 2011c
Top Crop I & II, IL (12-13)	Good et al. 2013a	Grand Ridge I, IL (09-10)	Derby et al. 2010g
Summerview, Alb (06; 07)	Baerwald 2008	Milford I, UT (10-11)	Stantec 2011b
Rail Splitter, IL (12-13)	Good et al. 2013b	Big Blue, MN (14)	Fagen Engineering 2015
Harrow, Ont (10)	Natural Resource Solutions 2011	Barton I & II, IA (10-11)	Derby et al. 2011a
Summerview, Alb (05-06)	Brown and Hamilton 2006b	Fowler III, IN (09)	Johnson et al. 2010b
Top of Iowa, IA (04)	Jain 2005	Buffalo Ridge, MN (Phase III; 02/Lake Benton II)	Johnson et al. 2004
Pioneer Prairie I, IA (Phase II; 11-12)	Chodachek et al. 2012	Milford I & II, UT (11-12)	Stantec 2012b
Judith Gap, MT (06-07)	TRC 2008	Buffalo Ridge, MN (Phase II; 02/Lake Benton I)	Johnson et al. 2004
Fowler I, IN (09)	Johnson et al. 2010a	Rugby, ND (10-11)	Derby et al. 2011b
Crystal Lake II, IA (09)	Derby et al. 2010a	Foote Creek Rim, WY (Phase I; 01-02)	Young et al. 2003a
Top of Iowa, IA (03)	Jain 2005	Elm Creek, MN (09-10)	Derby et al. 2010c
Kewaunee County, WI (99-01)	Howe et al. 2002	Wessington Springs, SD (09)	Derby et al. 2010f
Heritage Garden I, MI (12-14)	Kerlinger et al. 2014	Big Blue, MN (13)	Fagen Engineering 2014
Ripley, Ont (08)	Jacques Whitford 2009	PrairieWinds ND1 (Minot), ND (11)	Derby et al. 2012c
Winnebago, IA (09-10)	Derby et al. 2010e	PrairieWinds SD1 (Crow Lake), SD (11-12)	Derby et al. 2012d
Buffalo Ridge, MN (Phase II; 01/Lake Benton I)	Johnson et al. 2004	NPPD Ainsworth, NE (06)	Derby et al. 2007
Foote Creek Rim, WY (Phase I; 99)	Young et al. 2003a	Foote Creek Rim, WY (Phase I; 00)	Young et al. 2003a
Pioneer Prairie II, IA (13)	Chodachek et al. 2014	PrairieWinds SD1 (Crow Lake), SD (12-13)	Derby et al. 2013a
Buffalo Ridge, MN (Phase III; 01/Lake Benton II)	Johnson et al. 2004	Buffalo Ridge, MN (Phase I; 99)	Johnson et al. 2000
Crescent Ridge, IL (05-06)	Kerlinger et al. 2007	PrairieWinds SD1 (Crow Lake), SD (13-14)	Derby et al. 2014
Judith Gap, MT (09)	Poulton and Erickson 2010	Wessington Springs, SD (10)	Derby et al. 2011d
Fowler I, II, III, IN (12)	Good et al. 2013c	Buffalo Ridge I, SD (09-10)	Derby et al. 2010b
Buffalo Ridge II, SD (11-12)	Derby et al. 2012a		

## REFERENCES

- Adams, A. M., M. K. Jantzen, and R. M. Hamilton. 2012. Do You Hear What I Hear? Implications of Detector Selection for Acoustic Monitoring of Bats. *Methods in Ecology and Evolution* 3(992-998):
- AECOM. 2013. Annual Monitoring Report: July 2012 - June 2013. Solano Wind Project - Phase 3. Prepared for SMUD - Environmental Management, Sacramento, California. Prepared by AECOM, Sacramento, California. September 2013.
- Agranat, I. 2012. Bat Species Identification from Zero Crossing and Full Spectrum Echolocation Calls Using Hmms, Fisher Scores, Unsupervised Clustering and Balanced Winnow Pairwise Classifiers. Wildlife Acoustics, Inc., Concord, Massachusetts. Available online at: <http://www.wildlifeacoustics.com/images/documentation/Classification%20of%20Bat%20Echolocation%20Calls%20FINAL%2020120913A.pdf>
- Amorim, F., H. Rebelo, and L. Rodrigues. 2012. Factors Influencing Bat Activity and Mortality at a Wind Farm in the Mediterranean Region. *Acta Chiropterologica* 14(2): 439-457.
- Anderson, R., N. Neuman, J. Tom, W. P. Erickson, M. D. Strickland, M. Bourassa, K. J. Bay, and K. J. Sernka. 2004. Avian Monitoring and Risk Assessment at the Tehachapi Pass Wind Resource Area, California. Period of Performance: October 2, 1996 - May 27, 1998. NREL/SR-500-36416. National Renewable Energy Laboratory, Golden, Colorado. September 2004. <http://www.nrel.gov/docs/fy04osti/36416.pdf>
- Anderson, R., J. Tom, N. Neumann, W. P. Erickson, M. D. Strickland, M. Bourassa, K. J. Bay, and K. J. Sernka. 2005. Avian Monitoring and Risk Assessment at the San Geronio Wind Resource Area. NREL/SR-500-38054. August 2005. Western EcoSystems Technology, Inc. (WEST). Cheyenne, Wyoming. Phase I and II Field Work. <http://www.nrel.gov/docs/fy05osti/38054.pdf>
- ARCADIS U.S., Inc. 2013. Fall 2012 and Spring 2013 Avian and Bat Post-Construction Mortality Monitoring Report: Pioneer Trail Wind Farm. Prepared for E.ON Climate & Renewables, North America. Prepared by ARCADIS U.S., Inc., Milwaukee, Wisconsin. August 2013.
- Arnett, E. B. and E. F. Baerwald. 2013. Impacts of Wind Energy Development on Bats: Implications for Conservation. Chapter 21. Pp. 435-456. *In*: R. A. Adams and S. C. Pederson, eds. *Bat Ecology, Evolution and Conservation*. Springer Science Press, New York.
- Arnett, E. B., W. P. Erickson, J. Kerns, and J. Horn. 2005. Relationships between Bats and Wind Turbines in Pennsylvania and West Virginia: An Assessment of Fatality Search Protocols, Patterns of Fatality, and Behavioral Interactions with Wind Turbines. Prepared for the Bats and Wind Energy Cooperative. March 2005.
- Arnett, E. B., K. Brown, W. P. Erickson, J. Fiedler, B. L. Hamilton, T. H. Henry, A. Jain, G. D. Johnson, J. Kerns, R. R. Koford, C. P. Nicholson, T. O'Connell, M. Piorkowski, and R. Tankersley, Jr. 2008. Patterns of Bat Fatalities at Wind Energy Facilities in North America. *Journal of Wildlife Management* 72(1): 61-78.
- Arnett, E. B., M. R. Schirmacher, M. M. P. Huso, and J. P. Hayes. 2009a. Effectiveness of Changing Wind Turbine Cut-in Speed to Reduce Bat Fatalities at Wind Facilities: 2008 Annual Report. Prepared for the Bats and Wind Energy Cooperative (BWEC) and the Pennsylvania Game Commission. Bat Conservation International (BCI), Austin, Texas. April 2009. [http://www.batsandwind.org/pdf/Curtailment\\_2008\\_Final\\_Report.pdf](http://www.batsandwind.org/pdf/Curtailment_2008_Final_Report.pdf)

- Arnett, E. B., M. R. Schirmacher, M. M. P. Huso, and J. P. Hayes. 2009b. Patterns of Bat Fatality at the Casselman Wind Project in South-Central Pennsylvania. 2008 Annual Report. Annual report prepared for the Bats and Wind Energy Cooperative (BWEC) and the Pennsylvania Game Commission. Bat Conservation International (BCI), Austin, Texas. June 2009. Available online at: [http://www.batsandwind.org/pdf/2008 %20Casselman%20Fatality%20Report.pdf](http://www.batsandwind.org/pdf/2008%20Casselman%20Fatality%20Report.pdf)
- Arnett, E. B., M. R. Schirmacher, M. M. P. Huso, and J. P. Hayes. 2010. Patterns of Bat Fatality at the Casselman Wind Project in South-Central Pennsylvania. 2009 Annual Report. Annual report prepared for the Bats and Wind Energy Cooperative (BWEC) and the Pennsylvania Game Commission. Bat Conservation International (BCI), Austin, Texas. January 2010.
- Arnett, E. B., M. R. Schirmacher, C. D. Hein, and M. M. P. Huso. 2011. Patterns of Bird and Bat Fatality at the Locust Ridge II Wind Project, Pennsylvania. 2009-2010 Final Report. Prepared for the Bats and Wind Energy Cooperative (BWEC) and the Pennsylvania Game Commission (PGC). Prepared by Bat Conservation International (BCI), Austin, Texas. January 2011.
- Arnett, E. B., G. D. Johnson, W. P. Erickson, and C. D. Hein. 2013. A Synthesis of Operational Mitigation Studies to Reduce Bat Fatalities at Wind Energy Facilities in North America. A report submitted to the National Renewable Energy Laboratory (NREL), Golden Colorado. Bat Conservation International (BCI), Austin, Texas. March 2013.
- Atwell, LLC. 2012. Fall 2011 Post-Construction Monitoring Report for Roth Rock Wind Farm, Garrett County Maryland. Project No. 11001315. Prepared for Gestamp Wind North America, Houston, Texas. Prepared by Atwell, LCC. February 29, 2012. Revised August 15, 2012.
- Baerwald, E. F. 2008. Variation in the Activity and Fatality of Migratory Bats at Wind Energy Facilities in Southern Alberta: Causes and Consequences. Thesis. University of Calgary, Calgary, Alberta, Canada.
- Baerwald, E. F. and R. M. R. Barclay. 2009. Geographic Variation in Activity and Fatality of Migratory Bats at Wind Energy Facilities. *Journal of Mammalogy* 90(6): 1341–1349.
- Baerwald, E. F., G. H. D'Amours, B. J. Klug, and R. M. R. Barclay. 2008. Barotrauma Is a Significant Cause of Bat Fatalities at Wind Turbines. *Current Biology* 18(16): R695-R696.
- BHE Environmental, Inc. (BHE). 2008. Investigations of Bat Activity and Bat Species Richness at the Proposed Cedar Ridge Wind Farm in Fond Du Lac County, Wisconsin. Interim Report prepared for Wisconsin Power and Light.
- BHE Environmental, Inc. (BHE). 2010. Post-Construction Bird and Bat Mortality Study: Cedar Ridge Wind Farm, Fond Du Lac County, Wisconsin. Interim Report prepared for Wisconsin Power and Light, Madison, Wisconsin. Prepared by BHE Environmental, Inc. Cincinnati, Ohio. February 2010.
- BHE Environmental, Inc. (BHE). 2011. Post-Construction Bird and Bat Mortality Study: Cedar Ridge Wind Farm, Fond Du Lac County, Wisconsin. Final Report. Prepared for Wisconsin Power and Light, Madison, Wisconsin. Prepared by BHE Environmental, Inc. Cincinnati, Ohio. February 2011.
- BioResource Consultants, Inc. (BRC). 2012. Avian Mortality Monitoring Report, Pine Tree Wind Farm, Kern County, California. Prepared for the City of Los Angeles Department of Water and Power. Report prepared by BioResource Consultants, Inc., Ojai, California. March 26, 2012.
- Boyles, J. G. and C. K. R. Willis. 2010. Could Localized Warm Areas inside Cold Caves Reduce Mortality of Hibernating Bats Affected by White-Nose Syndrome? *Frontiers in Ecology and the Environment* 8(2): 92-98.

- Britzke, E. R., E. H. Gillam, and K. L. Murray. 2013. Current State of Understanding of Ultrasonic Detectors for the Study of Bat Ecology. *Acta Theriologica*: doi: 10.1007/s13364-13013-10131-13363.
- Brown, W. K. and B. L. Hamilton. 2004. Bird and Bat Monitoring at the Mcbride Lake Wind Farm, Alberta, 2003-2004. Report for Vision Quest Windelectric, Inc., Calgary, Alberta, Canada. September 2004.
- Brown, W. K. and B. L. Hamilton. 2006a. Bird and Bat Interactions with Wind Turbines Castle River Wind Facility, Alberta, 2001-2002. Report for Vision Quest Windelectric, Inc., Calgary, Alberta, Canada.
- Brown, W. K. and B. L. Hamilton. 2006b. Monitoring of Bird and Bat Collisions with Wind Turbines at the Summerview Wind Power Project, Alberta: 2005-2006. Prepared for Vision Quest Windelectric, Calgary, Alberta by TAEM Ltd., Calgary, Alberta, and BLH Environmental Services, Pincher Creek, Alberta. September 2006. <http://www.batsandwind.org/pdf/Brown2006.pdf>
- Brown, K., K. S. Smallwood, and B. Karas. 2013. Final 2012-2013 Annual Report, Avian and Bat Monitoring Project, Vasco Winds, Llc. Prepared for NextEra Energy Resources, Livermore, California. Prepared by Ventus Environmental Solutions, Portland, Oregon. September 2013.
- Chatfield, A. and K. Bay. 2014. Post-Construction Studies for the Mustang Hills and Alta VIII Wind Energy Facilities, Kern County, California. Final Report for the First Year of Operation: July 2012 - October 2013. Prepared for EverPower Wind Holdings, Inc. and Brookfield Renewable Energy Group. Prepared by Western EcoSystems Technology, Inc. (WEST), Cheyenne, Wyoming. February 28, 2014.
- Chatfield, A. and D. Russo. 2014. Post-Construction Avian and Bat Fatality Monitoring for the Pinyon Pines I & II Wind Energy Project, Kern County, California. Final Report for the First Year of Operation: March 2013 - March 2014. Prepared for MidAmerican Renewables, LLC, Des Moines, Iowa, and Alta Windpower Development, LLC, Mojave, California. Prepared by Western EcoSystems Technology, Inc. (WEST), Cheyenne, Wyoming. July 28, 2014.
- Chatfield, A., W. Erickson, and K. Bay. 2009. Avian and Bat Fatality Study, Dillon Wind-Energy Facility, Riverside County, California. Final Report: March 26, 2008 - March 26, 2009. Prepared for Iberdrola Renewables, Portland, Oregon. Prepared by Western EcoSystems Technology, Inc. (WEST), Cheyenne, Wyoming. June 3, 2009.
- Chatfield, A., W. P. Erickson, and K. Bay. 2010. Final Report: Avian and Bat Fatality Study at the Alite Wind-Energy Facility, Kern County, California. Final Report: June 15, 2009 – June 15, 2010. Prepared for CH2M HILL, Oakland, California. Prepared by Western EcoSystems Technology, Inc. (WEST), Cheyenne, Wyoming.
- Chatfield, A., M. Sonnenberg, and K. Bay. 2012. Avian and Bat Mortality Monitoring at the Alta-Oak Creek Mojave Project, Kern County, California. Final Report for the First Year of Operation March 22, 2011 – June 15, 2012. Prepared for Alta Windpower Development, LLC, Mojave, California. Prepared by Western EcoSystems Technology, Inc. (WEST), Cheyenne, Wyoming. September 12, 2012.
- Chatfield, A., D. Riser-Espinoza, and K. Bay. 2014. Bird and Bat Mortality Monitoring at the Alta Wind Energy Center, Phases I - V, Kern County, California. Final Report for the Second Year of Operation: March 4, 2013 - March 6, 2014. Prepared for Alta Windpower Development, LLC, Mojave, California. Prepared by Western EcoSystems Technology, Inc. (WEST), Cheyenne, Wyoming. August 22, 2014.

- Chodachek, K., C. Derby, M. Sonnenberg, and T. Thorn. 2012. Post-Construction Fatality Surveys for the Pioneer Prairie Wind Farm I Llc Phase Ii, Mitchell County, Iowa: April 4, 2011 – March 31, 2012. Prepared for EDP Renewables, North America LLC, Houston, Texas. Prepared by Western EcoSystems Technology, Inc. (WEST), Bismarck, North Dakota. August 27, 2012.
- Chodachek, K., C. Derby, K. Adachi, and T. Thorn. 2014. Post-Construction Fatality Surveys for the Pioneer Prairie Ii Wind Energy Facility, Mitchell County, Iowa. Final Report: July 1 - October 18, 2013. Prepared for EDP Renewables, North America LLC, Houston, Texas. Prepared by Western EcoSystems Technology Inc. (WEST), Bismarck, North Dakota. April 2014.
- Chodachek, K., K. Adachi, and G. DiDonato. 2015. Post Construction Fatality Surveys for the Prairie Rose Wind Energy Facility, Rock County, Minnesota. Final Report: April 15 to June 13, 2014, and August 15 to October 29, 2014. Prepared for Enel Green Power, North America, San Diego, California. Prepared by Western EcoSystems Technology, Inc. (WEST), Bismarck, North Dakota. January 23, 2015.
- Collins, J. and G. Jones. 2009. Differences in Bat Activity in Relation to Bat Detector Height: Implications for Bat Surveys at Proposed Wind Farms. *Acta Chiropterologica* 11: 343:350.
- Cryan, P. M. 2008. Mating Behavior as a Possible Cause of Bat Fatalities at Wind Turbines. *Journal of Wildlife Management* 72(3): 845-849. doi: 10.2193/2007-371.
- Cryan, P. M. and R. M. R. Barclay. 2009. Causes of Bat Fatalities at Wind Turbines: Hypotheses and Predictions. *Journal of Mammalogy* 90(6): 1330-1340.
- Derby, C., A. Dahl, W. Erickson, K. Bay, and J. Hoban. 2007. Post-Construction Monitoring Report for Avian and Bat Mortality at the Nppd Ainsworth Wind Farm. Unpublished report prepared by Western EcoSystems Technology, Inc. (WEST), Cheyenne, Wyoming, for the Nebraska Public Power District.
- Derby, C., K. Seginak, A. Dahl, and K. Bay. 2008. Wildlife Baseline Studies for the Buffalo Ridge Ii Wind Resource Area, Brookings and Deuel Counties, South Dakota. Final Report: March – November 2008. Prepared for HDR Engineering, Inc., Minneapolis, Minnesota, and Iberdrola Renewables, Inc., St. Paul, Minnesota. Prepared by Western EcoSystems Technology, Inc. (WEST), Bismarck, North Dakota. December 23, 2008. Available online at: <http://puc.sd.gov/commission/dockets/electric/2008/el08-031/122908.pdf>
- Derby, C., K. Chodachek, and K. Bay. 2010a. Post-Construction Bat and Bird Fatality Study Crystal Lake Ii Wind Energy Center, Hancock and Winnebago Counties, Iowa. Final Report: April 2009-October 2009. Prepared for NextEra Energy Resources, Juno Beach, Florida. Prepared by Western EcoSystems Technology, Inc. (WEST), Bismarck, North Dakota. June 2, 2010.
- Derby, C., K. Chodachek, K. Bay, and A. Merrill. 2010b. Post-Construction Fatality Survey for the Buffalo Ridge I Wind Project. May 2009 - May 2010. Prepared for Iberdrola Renewables, Inc., Portland, Oregon. Prepared by Western EcoSystems Technology, Inc. (WEST), Bismarck, North Dakota.
- Derby, C., K. Chodachek, K. Bay, and A. Merrill. 2010c. Post-Construction Fatality Surveys for the Elm Creek Wind Project: March 2009- February 2010. Prepared for Iberdrola Renewables, Inc. (IRI), Portland, Oregon. Prepared by Western EcoSystems Technology, Inc. (WEST), Bismarck, North Dakota.
- Derby, C., K. Chodachek, K. Bay, and A. Merrill. 2010d. Post-Construction Fatality Surveys for the Moraine Ii Wind Project: March - December 2009. Prepared for Iberdrola Renewables, Inc. (IRI), Portland, Oregon. Prepared by Western EcoSystems Technology, Inc. (WEST), Bismarck, North Dakota.

- Derby, C., K. Chodachek, K. Bay, and A. Merrill. 2010e. Post-Construction Fatality Surveys for the Winnebago Wind Project: March 2009- February 2010. Prepared for Iberdrola Renewables, Inc. (IRI), Portland, Oregon. Prepared by Western EcoSystems Technology, Inc. (WEST), Bismarck, North Dakota.
- Derby, C., A. Dahl, A. Merrill, and K. Bay. 2010f. 2009 Post-Construction Monitoring Results for the Wessington Springs Wind-Energy Facility, South Dakota. Final Report. Prepared for Wessington Wind Energy Center, LLC, Juno Beach, Florida. Prepared by Western EcoSystems Technology, Inc. (WEST), Bismarck, North Dakota. August 19, 2010.
- Derby, C., J. Ritzert, and K. Bay. 2010g. Bird and Bat Fatality Study, Grand Ridge Wind Resource Area, LaSalle County, Illinois. January 2009 - January 2010. Prepared for Grand Ridge Energy LLC, Chicago, Illinois. Prepared by Western EcoSystems Technology, Inc. (WEST), Bismarck, North Dakota. July 13, 2010. Revised January 2011.
- Derby, C., K. Chodachek, K. Bay, and S. Nomani. 2011a. Post-Construction Fatality Surveys for the Barton I and II Wind Project: Iri. March 2010 - February 2011. Prepared for Iberdrola Renewables, Inc. (IRI), Portland, Oregon. Prepared by Western EcoSystems Technology, Inc. (WEST), Bismarck, North Dakota. Version: September 28, 2011.
- Derby, C., K. Chodachek, K. Bay, and S. Nomani. 2011b. Post-Construction Fatality Surveys for the Rugby Wind Project: Iberdrola Renewables, Inc. March 2010 - March 2011. Prepared for Iberdrola Renewables, Inc. (IRI), Portland, Oregon. Prepared by Western EcoSystems Technology, Inc. (WEST), Bismarck, North Dakota. Version: October 14, 2011.
- Derby, C., K. Chodachek, T. Thorn, K. Bay, and S. Nomani. 2011c. Post-Construction Fatality Surveys for the Prairiewinds Nd1 Wind Facility, Basin Electric Power Cooperative, March - November 2010. Prepared for Basin Electric Power Cooperative, Bismarck, North Dakota. Prepared by Western EcoSystems Technology, Inc. (WEST), Bismarck, North Dakota. August 2, 2011.
- Derby, C., A. Dahl, K. Bay, and L. McManus. 2011d. 2010 Post-Construction Monitoring Results for the Wessington Springs Wind Energy Facility, South Dakota. Final Report: March 9 – November 16, 2010. Prepared for Wessington Wind Energy Center, LLC, Juno Beach, Florida. Prepared by Western EcoSystems Technology, Inc. (WEST), Bismarck, North Dakota. November 22, 2011.
- Derby, C., K. Chodachek, and M. Sonnenberg. 2012a. Post-Construction Casualty Surveys for the Buffalo Ridge II Wind Project. Iberdrola Renewables: March 2011- February 2012. Prepared for Iberdrola Renewables, LLC, Portland, Oregon. Prepared by Western EcoSystems Technology, Inc. (WEST), Bismarck, North Dakota. August 31, 2012.
- Derby, C., K. Chodachek, and M. Sonnenberg. 2012b. Post-Construction Fatality Surveys for the Elm Creek II Wind Project. Iberdrola Renewables: March 2011-February 2012. Prepared for Iberdrola Renewables, LLC, Portland, Oregon. Prepared by Western EcoSystems Technology, Inc. (WEST), Bismarck, North Dakota. October 8, 2012.
- Derby, C., K. Chodachek, T. Thorn, and A. Merrill. 2012c. Post-Construction Surveys for the Prairiewinds Nd1 (2011) Wind Facility Basin Electric Power Cooperative: March - October 2011. Prepared for Basin Electric Power Cooperative, Bismarck, North Dakota. Prepared by Western Ecosystems Technology, Inc. (WEST), Bismarck, North Dakota. August 31, 2012.
- Derby, C., A. Dahl, and A. Merrill. 2012d. Post-Construction Monitoring Results for the Prairiewinds Sd1 Wind Energy Facility, South Dakota. Final Report: March 2011 - February 2012. Prepared for Basin Electric Power Cooperative, Bismarck, North Dakota. Prepared by Western EcoSystems Technology, Inc. (WEST), Bismarck, North Dakota. September 27, 2012.



- Derby, C., A. Dahl, and D. Fox. 2013a. Post-Construction Fatality Monitoring Studies for the Prairiewinds Sd1 Wind Energy Facility, South Dakota. Final Report: March 2012 - February 2013. Prepared for Basin Electric Power Cooperative, Bismarck, North Dakota. Prepared by Western EcoSystems Technology, Inc. (WEST), Bismarck, North Dakota. November 13, 2013.
- Derby, C., G. Iskali, S. Howlin, T. Thorn, T. Lyon, and A. Dahl. 2013b. Post-Construction Monitoring Results for the Big Smile Wind Farm, Roger Mills County, Oklahoma. Final Report: March 2012 to February 2013. Prepared for Acciona Wind Energy, Chicago, Illinois. Prepared by Western EcoSystems Technology, Inc. (WEST), Bismarck, North Dakota. June 12, 2013.
- Derby, C., G. Iskali, M. Kauffman, T. Thorn, T. Lyon, and A. Dahl. 2013c. Post-Construction Monitoring Results, Red Hills Wind Farm, Roger Mills and Custer Counties, Oklahoma. Final Report: March 2012 to March 2013. Prepared for Acciona Wind Energy, Chicago, Illinois. Prepared by Western EcoSystems Technology, Inc. (WEST), Bismarck, North Dakota. June 12, 2013.
- Derby, C., A. Dahl, and G. DiDonato. 2014. Post-Construction Fatality Monitoring Studies for the Prairiewinds Sd1 Wind Energy Facility, South Dakota. Final Report: March 2013 - February 2014. Prepared for Basin Electric Power Cooperative, Bismarck, North Dakota. Prepared by Western EcoSystems Technology, Inc. (WEST), Bismarck, North Dakota.
- Downes, S. and R. Gritski. 2012a. Harvest Wind Project Wildlife Monitoring Report: January 2010 – January 2012. Prepared for Harvest Wind Project, Roosevelt, Washington. Prepared by Northwest Wildlife Consultants, Inc., Pendleton, Oregon May 1, 2012.
- Downes, S. and R. Gritski. 2012b. White Creek Wind I Wildlife Monitoring Report: November 2007 - November 2011. Prepared for White Creek Wind I, LLC, Roosevelt, Washington. Prepared by Northwest Wildlife Consultants, Inc., Pendleton, Oregon May 1, 2012.
- Ellison, L. E. 2012. Bats and Wind Energy: A Literature Synthesis and Annotated Bibliography. Open-File Report No. 2012-1110. US Geological Survey (USGS).
- Enk, T., K. Bay, M. Sonnenberg, J. Baker, M. Kesterke, J. R. Boehrs, and A. Palochak. 2010. Biglow Canyon Wind Farm Phase I Post-Construction Avian and Bat Monitoring Second Annual Report, Sherman County, Oregon. January 26, 2009 - December 11, 2009. Prepared for Portland General Electric Company, Portland, Oregon. Prepared by Western EcoSystems Technology, Inc.(WEST) Cheyenne, Wyoming, and Walla Walla, Washington. April 2010.
- Enk, T., K. Bay, M. Sonnenberg, J. Flaig, J. R. Boehrs, and A. Palochak. 2011a. Year 1 Post-Construction Avian and Bat Monitoring Report: Biglow Canyon Wind Farm Phase Ii, Sherman County, Oregon. September 10, 2009 - September 12, 2010. Prepared for Portland General Electric Company, Portland, Oregon. Prepared by Western EcoSystems Technology, Inc. (WEST), Cheyenne, Wyoming, and Walla Walla, Washington. January 7, 2011.
- Enk, T., C. Derby, K. Bay, and M. Sonnenberg. 2011b. 2010 Post-Construction Fatality Monitoring Report, Elkhorn Valley Wind Farm, Union County, Oregon. January – December 2010. Prepared for EDP Renewables, North America LLC, Houston, Texas. Prepared by Western EcoSystems Technology, Inc. (WEST), Walla Walla, Washington, and Cheyenne, Wyoming. December 8, 2011.
- Enk, T., K. Bay, M. Sonnenberg, and J. R. Boehrs. 2012a. Year 1 Avian and Bat Monitoring Report: Biglow Canyon Wind Farm Phase Iii, Sherman County, Oregon. September 13, 2010 - September 9, 2011. Prepared for Portland General Electric Company, Portland, Oregon. Prepared by Western EcoSystems Technology, Inc. (WEST), Cheyenne, Wyoming, and Walla Walla, Washington. April 24, 2012.

- Enk, T., K. Bay, M. Sonnenberg, and J. R. Boehrs. 2012b. Year 2 Avian and Bat Monitoring Report: Biglow Canyon Wind Farm Phase II, Sherman County, Oregon. September 13, 2010 - September 15, 2011. Prepared for Portland General Electric Company, Portland, Oregon. Prepared by Western EcoSystems Technology, Inc. (WEST), Cheyenne, Wyoming, and Walla Walla, Washington. April 23, 2012.
- Enz, T. and K. Bay. 2010. Post-Construction Avian and Bat Fatality Monitoring Study, Tuolumne Wind Project, Klickitat County, Washington. Final Report: April 20, 2009 - April 7, 2010. Prepared for Turlock Irrigation District, Turlock, California. Prepared by Western EcoSystems Technology, Inc. (WEST), Cheyenne, Wyoming. July 6, 2010.
- Enz, T. and K. Bay. 2011. Post-Construction Monitoring at the Linden Ranch Wind Farm, Klickitat County, Washington. Final Report: June 30, 2010 - July 17, 2011. Prepared for EnXco. Prepared by Western EcoSystems Technology, Inc. (WEST), Cheyenne, Wyoming. November 10, 2011.
- Enz, T., K. Bay, S. Nomani, and M. Kesterke. 2011. Bird and Bat Fatality Monitoring Study, Windy Flats and Windy Point II Wind Energy Projects, Klickitat County, Washington. Final Report: February 1, 2010 - January 14, 2011. Prepared for Windy Flats Partners, LLC, Goldendale, Washington. Prepared by Western EcoSystems Technology, Inc. (WEST), Cheyenne, Wyoming. August 19, 2011.
- Enz, T., K. Bay, M. Sonnenberg, and A. Palochak. 2012. Post-Construction Monitoring Studies for the Combine Hills Turbine Ranch, Umatilla County, Oregon. Final Report: January 7 - December 2, 2011. Prepared for Eurus Energy America Corporation, San Diego, California. Prepared by Western EcoSystems Technology, Inc. (WEST), Walla Walla, Washington.
- Erickson, W. P. and L. Sharp. 2005. Phase 1 and Phase 1a Avian Mortality Monitoring Report for 2004-2005 for the Smud Solano Wind Project. Prepared for Sacramento Municipal Utility District (SMUD), Sacramento, California. Prepared by URS Sacramento, California and Western EcoSystems Technology, Inc. (WEST). August 2005.
- Erickson, W. P., G. D. Johnson, M. D. Strickland, and K. Kronner. 2000. Avian and Bat Mortality Associated with the Vansycle Wind Project, Umatilla County, Oregon. Technical Report prepared by WEST, Inc., for Umatilla County Department of Resource Services and Development, Pendleton, Oregon. 21 pp.
- Erickson, W. P., K. Kronner, and R. Gritski. 2003. Nine Canyon Wind Power Project Avian and Bat Monitoring Report. September 2002 – August 2003. Prepared for the Nine Canyon Technical Advisory Committee and Energy Northwest by Western EcoSystems Technology, Inc. (WEST), Cheyenne, Wyoming, and Northwest Wildlife Consultants (NWC), Pendleton, Oregon. October 2003. [http://www.west-inc.com/reports/nine\\_canyon\\_monitoring\\_final.pdf](http://www.west-inc.com/reports/nine_canyon_monitoring_final.pdf)
- Erickson, W. P., K. Kronner, and R. Gritski. 2005. Nine Canyon Wind Project Phase II, Fall 2004 Avian and Bat Monitoring Report: July 25 – November 2, 2004. Prepared for the Nine Canyon Technical Advisory Committee, Energy Northwest, by Western Ecosystems Technology, Inc. (WEST), Cheyenne, Wyoming and Northwest Wildlife Consultants, Inc. (NWC), Pendleton, Oregon. March 2005.
- Erickson, W. P., J. Jeffrey, K. Kronner, and K. Bay. 2004. Stateline Wind Project Wildlife Monitoring Annual Report. July 2001 - December 2003. Technical report peer-reviewed by and submitted to FPL Energy, the Oregon Energy Facility Siting Council, and the Stateline Technical Advisory Committee. Western EcoSystems Technology, Inc. (WEST), Cheyenne, Wyoming, and Northwest Wildlife Consultants, Inc. (NWC), Pendleton, Oregon. December 2004. Available online at: [http://www.west-inc.com/reports/swp\\_final\\_dec04.pdf](http://www.west-inc.com/reports/swp_final_dec04.pdf)

- Erickson, W. P., K. Kronner, and K. J. Bay. 2007. Stateline 2 Wind Project Wildlife Monitoring Report, January - December 2006. Technical report submitted to FPL Energy, the Oregon Energy Facility Siting Council, and the Stateline Technical Advisory Committee.
- Erickson, W. P., J. D. Jeffrey, and V. K. Poulton. 2008. Puget Sound Energy Wild Horse Wind Facility Avian and Bat Monitoring: First Annual Report: January–December, 2007. Prepared for Puget Sound Energy, Ellensburg, Washington. Prepared by Western EcoSystems Technology, Inc. (WEST), Cheyenne, Wyoming. January 2008.
- Fagen Engineering, LLC. 2014. 2013 Avian and Bat Monitoring Annual Report: Big Blue Wind Farm, Blue Earth, Minnesota. Prepared for Big Blue Wind Farm. Prepared by Fagen Engineering, LLC. May 2014.
- Fagen Engineering, LLC. 2015. 2014 Avian and Bat Monitoring Annual Report: Big Blue Wind Farm, Blue Earth, Minnesota. Prepared for Big Blue Wind Farm. Prepared by Fagen Engineering, LLC.
- Fenton, M. B. 1980. Adaptiveness and Ecology of Echolocation in Terrestrial (Aerial) Systems. Pp. 427-446. *In*: R. G. Busnel and J. F. Fish, eds. *Animal Sonar Systems*. Plenum Press, New York.
- Fiedler, J. K. 2004. Assessment of Bat Mortality and Activity at Buffalo Mountain Windfarm, Eastern Tennessee. Thesis. University of Tennessee, Knoxville, Tennessee. Available online at: [http://www.tva.gov/environment/bmw\\_report/bat\\_mortality\\_bmw.pdf](http://www.tva.gov/environment/bmw_report/bat_mortality_bmw.pdf)
- Fiedler, J. K., T. H. Henry, R. D. Tankersley, and C. P. Nicholson. 2007. Results of Bat and Bird Mortality Monitoring at the Expanded Buffalo Mountain Windfarm, 2005. Tennessee Valley Authority. June 28, 2007.
- Fishman Ecological Services LLC. 2003. Carcass Survey Results for Seawest Windpower, Inc., Condon Site 2002-2003. Prepared for SeaWest WindPower Inc.
- Fry, J. A., G. Xian, S. Jin, J. A. Dewits, H. J., L. Yang, C. A. Barnes, N. D. Herold, and J. D. Wickham. 2011. Completion of the 2006 National Land Cover Database for the Conterminous United States. *Photogrammetric Engineering and Remote Sensing* 77(9): 859-864. [http://www.mrlc.gov/nlcd06\\_data.php](http://www.mrlc.gov/nlcd06_data.php)
- Golder Associates. 2010. Report on Fall Post-Construction Monitoring, Ripley Wind Power Project, Acciona Wind. Report Number 09-1126-0029. Submitted to Suncor Energy Products Inc., Calgary, Alberta, and Acciona Wind Energy Canada, Toronto, Ontario. February 2010.
- Good, R. E., W. P. Erickson, A. Merrill, S. Simon, K. Murray, K. Bay, and C. Fritchman. 2011. Bat Monitoring Studies at the Fowler Ridge Wind Energy Facility, Benton County, Indiana: April 13 - October 15, 2010. Prepared for Fowler Ridge Wind Farm. Prepared by Western EcoSystems Technology, Inc. (WEST), Cheyenne, Wyoming. January 28, 2011.
- Good, R. E., A. Merrill, S. Simon, K. Murray, and K. Bay. 2012. Bat Monitoring Studies at the Fowler Ridge Wind Farm, Benton County, Indiana: April 1 - October 31, 2011. Prepared for the Fowler Ridge Wind Farm. Prepared by Western EcoSystems Technology, Inc. (WEST), Bloomington, Indiana. January 31, 2012.
- Good, R. E., J. P. Ritzert, and K. Adachi. 2013a. Post-Construction Monitoring at the Top Crop Wind Farm, Gundy and LaSalle Counties, Illinois. Final Report: May 2012 - May 2013. Prepared for EDP Renewables, Houston, Texas. Prepared by Western EcoSystems Technology, Inc. (WEST), Bloomington, Indiana. October 22, 2013.

- Good, R. E., M. L. Ritzert, and K. Adachi. 2013b. Post-Construction Monitoring at the Rail Splitter Wind Farm, Tazwell and Logan Counties, Illinois. Final Report: May 2012 - May 2013. Prepared for EDP Renewables, Houston, Texas. Prepared by Western EcoSystems Technology, Inc. (WEST), Bloomington, Indiana. October 22, 2013.
- Good, R. E., M. Sonnenburg, and S. Simon. 2013c. Bat Evaluation Monitoring Studies at the Fowler Ridge Wind Farm, Benton County, Indiana: August 1 - October 15, 2012. Prepared for the Fowler Ridge Wind Farm. Prepared by Western EcoSystems Technology, Inc. (WEST), Bloomington, Indiana. January 31, 2013.
- Grehan, J. R. 2008. Steel Winds Bird Mortality Study, Final Report, Lackawanna, New York. Prepared for Steel Winds LLC. April 2008.
- Gritski, R. and K. Kronner. 2010a. Hay Canyon Wind Power Project Wildlife Monitoring Study: May 2009 - May 2010. Prepared for Iberdrola Renewables, Inc. (IRI), Hay Canyon Wind Power Project LLC. Prepared by Northwest Wildlife Consultants, Inc. (NWC), Pendleton, Oregon. September 20, 2010.
- Gritski, R. and K. Kronner. 2010b. Pebble Springs Wind Power Project Wildlife Monitoring Study: January 2009 - January 2010. Prepared for Iberdrola Renewables, Inc. (IRI), and the Pebble Springs Advisory Committee. Prepared by Northwest Wildlife Consultants, Inc. (NWC), Pendleton, Oregon. April 20, 2010.
- Gritski, R., S. Downes, and K. Kronner. 2010. Klondike Iii (Phase 1) Wind Power Project Wildlife Monitoring: October 2007-October 2009. Prepared for Iberdrola Renewables, Inc. (IRI), Portland, Oregon, for Klondike Wind Power III LLC. Prepared by Northwest Wildlife Consultants, Inc. (NWC), Pendleton, Oregon. April 21, 2010 (Updated September 2010). Available online at: [http://www.oregon.gov/energy/Siting/docs/KWP/KWPWildlifeReport\\_091210.pdf](http://www.oregon.gov/energy/Siting/docs/KWP/KWPWildlifeReport_091210.pdf)
- Gritski, R., S. Downes, and K. Kronner. 2011. Klondike Iiia (Phase 2) Wind Power Project Wildlife Monitoring: August 2008 - August 2010. Updated Final. Prepared for Iberdrola Renewables, Inc. (IRI), Portland, Oregon, for Klondike Wind Power III LLC. Prepared by Northwest Wildlife Consultants, Inc. (NWC), Pendleton, Oregon. Updated April 2011. Available online at: [http://www.oregon.gov/energy/Siting/docs/KWP/KWPWildlifeReport\\_042711.pdf](http://www.oregon.gov/energy/Siting/docs/KWP/KWPWildlifeReport_042711.pdf)
- Gritski, R., K. Kronner, and S. Downes. 2008. Leaning Juniper Wind Power Project, 2006 – 2008. Wildlife Monitoring Final Report. Prepared for PacifiCorp Energy, Portland, Oregon. Prepared by Northwest Wildlife Consultants, Inc. (NWC), Pendleton, Oregon. December 30, 2008.
- Grodsky, S. M., M. J. Behr, A. Gendler, D. Drake, B. D. Dieterle, R. J. Rudd, and N. L. Walrath. 2011. Investigating the Causes of Death for Wind Turbine-Associated Bat Fatalities. *Journal of Mammalogy* 92(5): 917-925.
- Gruver, J. 2002. Assessment of Bat Community Structure and Roosting Habitat Preferences for the Hoary Bat (*Lasiurus Cinereus*) near Foote Creek Rim, Wyoming. Thesis. University of Wyoming, Laramie, Wyoming. 149 pp.
- Gruver, J. 2008. Bat Acoustic Studies for the Blue Sky Green Field Wind Project, Fond Du Lac County, Wisconsin. Final Report: July 24 - October 29, 2007. Prepared for We Energies, Milwaukee, Wisconsin. Prepared by Western EcoSystems Technology, Inc. (WEST), Cheyenne, Wyoming. February 26, 2008.
- Gruver, J., K. Bay, and W. P. Erickson. 2009a. Post-Construction Bat and Bird Fatality Study Blue Sky Green Field Wind Resource Area, Fond Du Lac County, Wisconsin. Prepared for WeEnergies, by Western EcoSystems Technology, Inc. (WEST), Cheyenne, Wyoming. June 3, 2009.

- Gruver, J., M. Sonnenberg, K. Bay, and W. Erickson. 2009b. Post-Construction Bat and Bird Fatality Study at the Blue Sky Green Field Wind Energy Center, Fond Du Lac County, Wisconsin July 21 - October 31, 2008 and March 15 - June 4, 2009. Unpublished report prepared by Western EcoSystems Technology, Inc. (WEST), Cheyenne, Wyoming. December 17, 2009.
- Harvey & Associates. 2013. Montezuma II Wind Energy Center: Post Construction Monitoring Report, Year-1. Prepared by NextEra Montezuma II Wind, LLC, Juno Beach, Florida. Prepared by H.T. Harvey & Associates, Los Gatos, California. September 3, 2013.
- Hayes, M. A. 2013. Bats Killed in Large Numbers at United States Wind Energy Facilities. *Bioscience* 63(12): 975-979.
- Heffernan, L. 2016. Map of White-Nose Syndrome (Wns) Occurrence by County/District, March 31, 2016. Pennsylvania Game Commission. Map dated August 2, 2016. Available online at: [https://www.whitenosesyndrome.org/sites/default/files/wns\\_map\\_20160802.jpg](https://www.whitenosesyndrome.org/sites/default/files/wns_map_20160802.jpg)
- Hein, C. D., J. Gruver, and E. B. Arnett. 2013a. Relating Pre-Construction Bat Activity and Post-Construction Bat Fatality to Predict Risk at Wind Energy Facilities: A Synthesis. A report submitted to the National Renewable Energy Laboratory (NREL), Golden Colorado. Bat Conservation International (BCI), Austin, Texas. March 2013. Available online at: [http://batsandwind.org/pdf/Pre-%20Post-construction%20SynthesisFINAL%20REPORT .pdf](http://batsandwind.org/pdf/Pre-%20Post-construction%20SynthesisFINAL%20REPORT.pdf)
- Hein, C. D., A. Prichard, T. Mabee, and M. R. Schirmacher. 2013b. Avian and Bat Post-Construction Monitoring at the Pinnacle Wind Farm, Mineral County, West Virginia, 2012. Final Report. Bat Conservation International, Austin, Texas, and ABR, Inc., Forest Grove, Oregon. April 2013.
- Hein, C. D., A. Prichard, T. Mabee, and M. R. Schirmacher. 2013c. Effectiveness of an Operational Mitigation Experiment to Reduce Bat Fatalities at the Pinnacle Wind Farm, Mineral County, West Virginia, 2012. Bat Conservation International, Austin, Texas, and ABR, Inc., Forest Grove, Oregon. April 2013.
- Howe, R. W., W. Evans, and A. T. Wolf. 2002. Effects of Wind Turbines on Birds and Bats in Northeastern Wisconsin. Prepared by University of Wisconsin-Green Bay, for Wisconsin Public Service Corporation and Madison Gas and Electric Company, Madison, Wisconsin. November 21, 2002. 104 pp.
- ICF International. 2012. Montezuma Wind Llc (Montezuma I) 2011 Avian and Bat Fatality Monitoring Report. Prepared for NextEra Energy Resources. Prepared by ICF International, Sacramento, California. May 17, 2012.
- ICF International. 2013. Montezuma Wind Llc (Montezuma I) 2012 Avian and Bat Fatality Monitoring Report. Prepared for NextEra Energy Resources. Prepared by ICF International, Sacramento, California. May 2013.
- Insignia Environmental. 2009. 2008/2009 Annual Report for the Buena Vista Avian and Bat Monitoring Project. Prepared for Contra Costa County, Martinez, California. Prepared by Insignia Environmental, Palo Alto, California. September 4, 2009.
- Jacques Whitford Stantec Limited (Jacques Whitford). 2009. Ripley Wind Power Project Postconstruction Monitoring Report. Project No. 1037529.01. Report to Suncor Energy Products Inc., Calgary, Alberta, and Acciona Energy Products Inc., Calgary, Alberta. Prepared for the Ripley Wind Power Project Post-Construction Monitoring Program. Prepared by Jacques Whitford, Markham, Ontario. April 30, 2009.
- Jain, A. 2005. Bird and Bat Behavior and Mortality at a Northern Iowa Windfarm. M.S. Thesis. Iowa State University, Ames, Iowa.

- Jain, A., P. Kerlinger, R. Curry, and L. Slobodnik. 2007. Annual Report for the Maple Ridge Wind Power Project: Post-Construction Bird and Bat Fatality Study – 2006. Final Report. Prepared for PPM Energy and Horizon Energy and Technical Advisory Committee (TAC) for the Maple Ridge Project Study.
- Jain, A., P. Kerlinger, R. Curry, and L. Slobodnik. 2009a. Annual Report for the Maple Ridge Wind Power Project: Post-Construction Bird and Bat Fatality Study - 2007. Final report prepared for PPM Energy and Horizon Energy and Technical Advisory Committee (TAC) for the Maple Ridge Project Study. May 6, 2009.
- Jain, A., P. Kerlinger, R. Curry, L. Slobodnik, A. Fuerst, and C. Hansen. 2009b. Annual Report for the Noble Ellenburg Windpark, Llc, Postconstruction Bird and Bat Fatality Study - 2008. Prepared for Noble Environmental Power, LLC by Curry and Kerlinger, LLC. April 13, 2009.
- Jain, A., P. Kerlinger, R. Curry, L. Slobodnik, J. Histed, and J. Meacham. 2009c. Annual Report for the Noble Clinton Windpark, Llc, Postconstruction Bird and Bat Fatality Study - 2008. Prepared for Noble Environmental Power, LLC by Curry and Kerlinger, LLC. April 13, 2009.
- Jain, A., P. Kerlinger, R. Curry, L. Slobodnik, and M. Lehman. 2009d. Maple Ridge Wind Power Avian and Bat Fatality Study Report - 2008. Annual Report for the Maple Ridge Wind Power Project, Post-construction Bird and Bat Fatality Study - 2008. Prepared for Iberdrola Renewables, Inc, Horizon Energy, and the Technical Advisory Committee (TAC) for the Maple Ridge Project Study. Prepared by Curry and Kerlinger, LLC. May 14, 2009.
- Jain, A., P. Kerlinger, R. Curry, L. Slobodnik, J. Quant, and D. Pursell. 2009e. Annual Report for the Noble Bliss Windpark, Llc, Postconstruction Bird and Bat Fatality Study - 2008. Prepared for Noble Environmental Power, LLC by Curry and Kerlinger, LLC. April 13, 2009.
- Jain, A., P. Kerlinger, L. Slobodnik, R. Curry, A. Fuerst, and A. Harte. 2010a. Annual Report for the Noble Bliss Windpark, Llc: Postconstruction Bird and Bat Fatality Study - 2009. Prepared for Noble Environmental Power, LLC. Prepared by Curry and Kerlinger, LLC, Cape May, New Jersey. March 9, 2010.
- Jain, A., P. Kerlinger, L. Slobodnik, R. Curry, and K. Russell. 2010b. Annual Report for the Noble Clinton Windpark, Llc: Postconstruction Bird and Bat Fatality Study - 2009. Prepared for Noble Environmental Power, LLC. Prepared by Curry and Kerlinger, LLC, Cape May, New Jersey. March 9, 2010.
- Jain, A., P. Kerlinger, L. Slobodnik, R. Curry, and K. Russell. 2010c. Annual Report for the Noble Ellenburg Windpark, Llc: Postconstruction Bird and Bat Fatality Study - 2009. Prepared for Noble Environmental Power, LLC. Prepared by Curry and Kerlinger, LLC, Cape May, New Jersey. March 14, 2010.
- Jain, A., P. Kerlinger, L. Slobodnik, R. Curry, and A. Harte. 2011a. Annual Report for the Noble Wethersfield Windpark, Llc: Postconstruction Bird and Bat Fatality Study - 2010. Prepared for Noble Environmental Power, LLC. Prepared by Curry and Kerlinger, LLC, Cape May, New Jersey. January 22, 2011.
- Jain, A., P. Kerlinger, L. Slobodnik, R. Curry, and K. Russell. 2011b. Annual Report for the Noble Altona Windpark, Llc: Postconstruction Bird and Bat Fatality Study - 2010. Prepared for Noble Environmental Power, LLC. Prepared by Curry and Kerlinger, LLC, Cape May, New Jersey. January 22, 2011.
- Jain, A., P. Kerlinger, L. Slobodnik, R. Curry, and K. Russell. 2011c. Annual Report for the Noble Chateaugay Windpark, Llc: Postconstruction Bird and Bat Fatality Study - 2010. Prepared for Noble Environmental Power, LLC. Prepared by Curry and Kerlinger, LLC, Cape May, New Jersey. January 22, 2011.

- James, R. D. 2008. Erie Shores Wind Farm, Port Burwell, Ontario: Fieldwork Report for 2006 and 2007 During the First Two Years of Operation. Report to Environment Canada, Ontario Ministry of Natural Resources, Erie Shores Wind Farm LP - McQuarrie North American and AIM PowerGen Corporation. January 2008.
- Jeffrey, J. D., K. Bay, W. P. Erickson, M. Sonneberg, J. Baker, M. Kesterke, J. R. Boehrs, and A. Palochak. 2009a. Portland General Electric Biglow Canyon Wind Farm Phase I Post-Construction Avian and Bat Monitoring First Annual Report, Sherman County, Oregon. January 2008 - December 2008. Technical report prepared for Portland General Electric Company, Portland, Oregon. Prepared by Western EcoSystems Technology (WEST) Inc., Cheyenne, Wyoming, and Walla Walla, Washington. April 29, 2009.
- Jeffrey, J. D., W. P. Erickson, K. Bay, M. Sonneberg, J. Baker, J. R. Boehrs, and A. Palochak. 2009b. Horizon Wind Energy, Elkhorn Valley Wind Project, Post-Construction Avian and Bat Monitoring, First Annual Report, January-December 2008. Technical report prepared for Telocaset Wind Power Partners, a subsidiary of Horizon Wind Energy, Portland, Oregon. Prepared by Western EcoSystems Technology, Inc., Cheyenne, Wyoming, and Walla Walla, Washington. May 4, 2009.
- Johnson, G. D., W. P. Erickson, M. D. Strickland, M. F. Shepherd, and D. A. Shepherd. 2000. Final Report: Avian Monitoring Studies at the Buffalo Ridge Wind Resource Area, Minnesota: Results of a 4-Year Study. Final report prepared for Northern States Power Company, Minneapolis, Minnesota, by Western EcoSystems Technology, Inc. (WEST), Cheyenne, Wyoming. September 22, 2000. 212 pp. <http://www.west-inc.com>
- Johnson, G., W. Erickson, and J. White. 2003. Avian and Bat Mortality During the First Year of Operation at the Klondike Phase I Wind Project, Sherman County, Oregon. Technical report prepared for Northwestern Wind Power, Goldendale, Washington, by Western EcoSystems Technology, Inc. (WEST), Cheyenne, Wyoming. March 2003. <http://www.west-inc.com>
- Johnson, G. D., M. K. Perlik, W. P. Erickson, and M. D. Strickland. 2004. Bat Activity, Composition and Collision Mortality at a Large Wind Plant in Minnesota. *Wildlife Society Bulletin* 32(4): 1278-1288.
- Johnson, G. D., M. Ritzert, S. Nomani, and K. Bay. 2010a. Bird and Bat Fatality Studies, Fowler Ridge I Wind-Energy Facility Benton County, Indiana. Unpublished report prepared for British Petroleum Wind Energy North America Inc. (BPWENA) by Western EcoSystems Technology, Inc. (WEST).
- Johnson, G. D., M. Ritzert, S. Nomani, and K. Bay. 2010b. Bird and Bat Fatality Studies, Fowler Ridge Iii Wind-Energy Facility, Benton County, Indiana. April 2 - June 10, 2009. Prepared for BP Wind Energy North America. Prepared by Western EcoSystems Technology, Inc. (WEST), Cheyenne, Wyoming.
- Kerlinger, P. 2002a. An Assessment of the Impacts of Green Mountain Power Corporation's Wind Power Facility on Breeding and Migrating Birds in Searsburg, Vermont: July 1996-July 1998. NREL/SR-500-28591. Prepared for Vermont Public Service, Montpelier, Vermont. US Department of Energy, National Renewable Energy Laboratory, Golden, Colorado. March 2002. 95 pp. <http://www.nrel.gov/docs/fy02osti/28591.pdf>
- Kerlinger, P. 2002b. Avian Fatality Study at the Madison Wind Power Project, Madison, New York. Report to PG&E Generating.
- Kerlinger, P., R. Curry, L. Culp, A. Jain, C. Wilkerson, B. Fischer, and A. Hasch. 2006. Post-Construction Avian and Bat Fatality Monitoring Study for the High Winds Wind Power Project, Solano County, California: Two Year Report. Prepared for High Winds LLC, FPL Energy. Prepared by Curry and Kerlinger, LLC, MacLean, Virginia. April 2006. Available online at: <http://www.co.solano.ca.us/civicax/filebank/blobdload.aspx?blobid=8915>

- Kerlinger, P., R. Curry, A. Hasch, and J. Guarnaccia. 2007. Migratory Bird and Bat Monitoring Study at the Crescent Ridge Wind Power Project, Bureau County, Illinois: September 2005 - August 2006. Final draft prepared for Orrick Herrington and Sutcliffe, LLP. May 2007.
- Kerlinger, P., R. Curry, L. Culp, A. Hasch, and A. Jain. 2009. Revised Post-Construction Avian Monitoring Study for the Shiloh I Wind Power Project, Solano County, California. Final Report: October 2009. Third Year Report (Revised 2010). Prepared for Iberdrola Renewables, Inc. (IRI). Prepared by Curry and Kerlinger, LLC., McLean, Virginia. Available online at: <https://www.solanocounty.com/civicax/filebank/blobdload.aspx?blobid=8914>
- Kerlinger, P., R. Curry, L. Culp, A. Hasch, and A. Jain. 2010. Post-Construction Avian Monitoring Study for the Shiloh II Wind Power Project, Solano County, California. Year One Report. Prepared for enXco Development Inc. Prepared by Curry and Kerlinger, LLC, McLean, Virginia. September 2010. Available online at: <https://www.solanocounty.com/civicax/filebank/blobdload.aspx?blobid=12118>
- Kerlinger, P., J. Guarnaccia, L. Slobodnik, and R. Curry. 2011a. A Comparison of Bat Mortality in Farmland and Forested Habitats at the Noble Bliss and Wethersfield Windparks, Wyoming County, New York. Report Prepared for Noble Environmental Power. Report prepared by Curry & Kerlinger, LLC, Cape May Point, New Jersey. November 2011.
- Kerlinger, P., D. S. Reynolds, J. Guarnaccia, L. Slobodnik, and R. Curry. 2011b. An Examination of the Relationship between Bat Abundance and Fatalities at the Noble Altona Windpark, Clinton County, New York. Report prepared for Noble Environmental Power. Report prepared by Curry & Kerlinger, LLC, Cape May Point, New Jersey, and North East Ecological Services. December 2011.
- Kerlinger, P., R. Curry, A. Hasch, J. Guarnaccia, and D. Riser-Espinoza. 2013a. Post-Construction Bird and Bat Studies at the Shiloh II Wind Project, Llc, Solano County, California. Final Report. Prepared for EDF Renewable Energy (formerly known as enXco). Prepared by Curry and Kerlinger, LLC, McLean, Virginia. December 2012 (Revised June 2013).
- Kerlinger, P., R. Curry, A. Hasch, J. Guarnaccia, and D. Riser-Espinoza. 2013b. Post-Construction Bird and Bat Studies at the Shiloh III Wind Project, Llc, Solano County, California. Report on Year 1 Results. Prepared for EDF Renewable Energy (formerly known as enXco). Prepared by Curry and Kerlinger, LLC, McLean, Virginia. August 2013.
- Kerlinger, P., J. Guarnaccia, R. Curry, and C. J. Vogel. 2014. Bird and Bat Fatality Study, Heritage Garden I Wind Farm, Delta County, Michigan: 2012-2014. Prepared for Heritage Sustainable Energy, LLC. Prepared by Curry and Kerlinger, LLC, McLean, Virginia. November 2014.
- Kerns, J. and P. Kerlinger. 2004. A Study of Bird and Bat Collision Fatalities at the Mountaineer Wind Energy Center, Tucker County, West Virginia: Annual Report for 2003. Prepared for FPL Energy and the Mountaineer Wind Energy Center Technical Review Committee. February 14, 2004. 39 pp. <http://www.wvhighlands.org/Birds/MountaineerFinalAvianRpt-%203-15-04PKJK.pdf>
- Kronner, K., B. Gritski, and S. Downes. 2008. Big Horn Wind Power Project Wildlife Fatality Monitoring Study: 2006–2007. Final report prepared for PPM Energy and the Big Horn Wind Project Technical Advisory Committee by Northwest Wildlife Consultants, Inc. (NWC), Mid-Columbia Field Office, Goldendale, Washington. June 1, 2008.
- Kunz, T. H., E. B. Arnett, B. M. Cooper, W. P. Erickson, G. D. Johnson, R. P. Larkin, M. D. Strickland, R. W. Thresher, and M. D. Tuttle. 2007a. Ecological Impacts of Wind Energy Development on Bats: Questions, Hypotheses, and Research Needs. In press. *Frontiers in Ecology and the Environment* 5.



- Kunz, T. H., E. B. Arnett, B. M. Cooper, W. P. Erickson, R. P. Larkin, T. Mabee, M. L. Morrison, M. D. Strickland, and J. M. Szewczak. 2007b. Assessing Impacts of Wind-Energy Development on Nocturnally Active Birds and Bats: A Guidance Document. *Journal of Wildlife Management* 71(8): 2449-2486. Available online at: <http://www.batsandwind.org/pdf/Assessing%20Impacts%20of%20wind-energy%20development%20on%20bats%20and%20birds.pdf>
- Limpens, H. J. G. A. and G. F. McCracken. 2004. Choosing a Bat Detector: Theoretical and Practical Aspects. Pp. 28-37. *In*: R. M. Brigham, E. K. V. Kalko, G. Jones, S. Parsons, and H. J. G. A. Limpens, eds. *Bat Echolocation Research: Tools, Techniques, and Analysis*. Bat Conservation International, Austin, Texas.
- Martin, C., E. Arnett, and M. Wallace. 2013. Evaluating Bird and Bat Post-Construction Impacts at the Sheffield Wind Facility, Vermont: 2012 Annual Report. Prepared for Bat Conservation International and First Wind. Prepared by Department of Natural Resources Management, Texas Tech University, Lubbock, Texas. March 25, 2013.
- Miller, A. 2008. Patterns of Avian and Bat Mortality at a Utility-Scaled Wind Farm on the Southern High Plains. Thesis. Texas Tech University, August 2008.
- Minnesota Public Utilities Commission (MPUC). 2012. Lakefield Wind Project Avian and Bat Fatality Monitoring. MPUC Site Permit Quarterly Report and USFWS Special Purpose – Utility (Avian Take Monitoring) 30-Day Report: April 1 – September 30, 2012. USFWS Permit No: MB70161A-0; MDNR Permit No: 17930; MPUC Permit No: IP-6829/WS-09-1239, Permit Special Condition VII.B. October 15, 2012.
- Minnis, A. M. and D. L. Lindner. 2013. Phylogenetic Evaluation of *Geomyces* and Allies Reveals No Close Relatives of *Pseudogymnoascus destructans*, *Comb. Nov.*, in Bat Hibernacula of Eastern North America. *Fungal Biology* 117: 638-649.
- Müeller, J., R. Brandl, J. Buchner, H. Pretzsch, S. Seifert, C. Strätz, M. Veith, and B. Fenton. 2013. From Ground to above Canopy - Bat Activity in Mature Forests Is Driven by Vegetation Density and Height. *Forest Ecology and Management* 306: 179-184.
- National Land Cover Data (NLCD). 2011. National Land Cover Database Nlcd, Multi-Resolution Land Characteristics Consortium (Mrlc). Us Geological Survey (Usgs) Earth Resources Observation and Science (Eros) Center, Sioux Falls, South Dakota. Information available online at: [http://www.mrlc.gov/nlcd11\\_leg.php](http://www.mrlc.gov/nlcd11_leg.php)
- Natural Resource Solutions Inc. (NRSI). 2011. Harrow Wind Farm 2010 Post-Construction Monitoring Report. Project No. 0953. Prepared for International Power Canada, Inc., Markham, Ontario. Prepared by NRSI. August 2011.
- New Jersey Audubon Society (NJAS). 2008a. Post-Construction Wildlife Monitoring at the Atlantic City Utilities Authority - Jersey Atlantic Wind Power Facility: Periodic Report Covering Work Conducted between 1 August and 30 September 2008. Submitted to New Jersey Board of Public Utilities, New Jersey Clean Energy Program, Newark, New Jersey. Submitted by New Jersey Audubon Society, Center for Research and Education, Cape May Court House, New Jersey. Available online at: [http://www.njcleanenergy.com/files/file/Renewable\\_Programs/Wind/ACUA\\_Interim%20Report\\_Jan-Sep08\\_all.pdf](http://www.njcleanenergy.com/files/file/Renewable_Programs/Wind/ACUA_Interim%20Report_Jan-Sep08_all.pdf)

- New Jersey Audubon Society (NJAS). 2008b. Post-Construction Wildlife Monitoring at the Atlantic City Utilities Authority - Jersey Atlantic Wind Power Facility: Periodic Report Covering Work Conducted between 20 July and 31 December 2007. Submitted to New Jersey Board of Public Utilities, New Jersey Clean Energy Program, Newark, New Jersey. Submitted by New Jersey Audubon Society, Center for Research and Education, Cape May Court House, New Jersey. Available online at: [http://www.njcleanenergy.com/files/file/Renewable\\_Programs/CORE/ACUAReportwithimages123107LowRes.pdf](http://www.njcleanenergy.com/files/file/Renewable_Programs/CORE/ACUAReportwithimages123107LowRes.pdf)
- New Jersey Audubon Society (NJAS). 2009. Post-Construction Wildlife Monitoring at the Atlantic City Utilities Authority - Jersey Atlantic Wind Power Facility: Project Status Report Iv. Available online at: [http://www.njcleanenergy.com/files/file/RenewablePrograms/Wind/ACUA\\_Quarterly%20report\\_to-date\\_Jan-Aug09\\_1c.pdf](http://www.njcleanenergy.com/files/file/RenewablePrograms/Wind/ACUA_Quarterly%20report_to-date_Jan-Aug09_1c.pdf)
- Nicholson, C. P., J. R.D. Tankersley, J. K. Fiedler, and N. S. Nicholas. 2005. Assessment and Prediction of Bird and Bat Mortality at Wind Energy Facilities in the Southeastern United States. Final Report. Tennessee Valley Authority, Knoxville, Tennessee.
- Normandeau Associates, Inc. 2010. Stetson Mountain II Wind Project Year 1 Post-Construction Avian and Bat Mortality Monitoring Study, T8 R4 Nbpp, Maine. Prepared for First Wind, LLC, Portland, Maine. Prepared by Normandeau Associates, Inc., Falmouth, Maine. December 2, 2010.
- Normandeau Associates, Inc. 2011. Year 3 Post- Construction Avian and Bat Casualty Monitoring at the Stetson I Wind Farm, T8 R4 Nbpp, Maine. Prepared for First Wind Energy, LLC, Portland, Maine. Prepared by Normandeau Associates, Inc., Falmouth, Maine. December 2011.
- North American Datum (NAD). 1983. Nad83 Geodetic Datum.
- Northwest Wildlife Consultants, Inc. (NWC) and Western EcoSystems Technology, Inc. (WEST). 2007. Avian and Bat Monitoring Report for the Klondike II Wind Power Project. Sherman County, Oregon. Prepared for PPM Energy, Portland, Oregon. Managed and conducted by NWC, Pendleton, Oregon. Analysis conducted by WEST, Cheyenne, Wyoming. July 17, 2007.
- Osborn, R. G., K. F. Higgins, C. D. Dieter, and R. E. Usgaard. 1996. Bat Collisions with Wind Turbines in Southwestern Minnesota. *Bat Research News* 37: 105-108.
- Osborn, R. G., K. F. Higgins, R. E. Usgaard, C. D. Dieter, and R. G. Neiger. 2000. Bird Mortality Associated with Wind Turbines at the Buffalo Ridge Wind Resource Area, Minnesota. *American Midland Naturalist* 143: 41-52.
- Piorkowski, M. D. and T. J. O'Connell. 2010. Spatial Pattern of Summer Bat Mortality from Collisions with Wind Turbines in Mixed-Grass Prairie. *American Midland Naturalist* 164: 260-269.
- Poulton, V. and W. P. Erickson. 2010. Post-Construction Bat and Bird Fatality Study, Judith Gap Wind Farm, Wheatland County, Montana. Final Report: Results from June–October 2009 Study and Comparison with 2006-2007 Study. Prepared for Judith Gap Energy, LLC. Prepared by Western EcoSystems Technology, Inc. (WEST), Cheyenne, Wyoming. March 2010.
- Reeder, D. M., C. L. Frank, G. G. Turner, A. Kurta, E. R. Britzke, S. R. Darling, C. W. Stihler, A. C. Hicks, C. U. Meteyer, R. Jacob, L. A. Grieneisen, S. A. Brownlee, M. E. Vodzak, L. K. Muller, and D. S. Blehert. 2012. Frequent Arousal from Hibernation Linked to Severity of Infection and Mortality in Bats with White-Nose Syndrome. *PLoS ONE* 7(6): e38920. doi: 38910.31371/journal.pone.0038920.

- Reynolds, D. S. 2010a. Post-Construction Acoustic Monitoring, 2009 Sampling Period: Noble Clinton Windpark, Clinton County, New York. Prepared for Noble Environmental Power, LLC, Essex, Connecticut. Prepared by North East Ecological Services, Bow, New Hampshire. April 6, 2010.
- Reynolds, D. S. 2010b. Post-Construction Acoustic Monitoring, 2009 Sampling Period: Noble Ellenburg Windpark, Clinton County, New York. Prepared for Noble Environmental Power, LLC, Essex, Connecticut. Prepared by North East Ecological Services, Bow, New Hampshire. April 6, 2010.
- Rollins, K. E., D. K. Meyerholz, G. D. Johnson, A. P. Capparella, and S. S. Loew. 2012. A Forensic Investigation into the Etiology of Bat Mortality at a Wind Farm: Barotrauma or Traumatic Injury? *Veterinary Pathology* 49(2): 362-371.
- Sapphos Environmental, Inc. (Sapphos). 2014. Pacific Wind Energy Project: Year I Avian and Bat Fatality Monitoring Report. Prepared for Pacific Wind, LLC, San Diego, California. Prepared by Sapphos, Pasadena, California. September 15, 2014.
- Solick, D., A. Krause, A. Chatfield, and W. P. Erickson. 2010. Bat Acoustic Studies for the Alta East Wind Resource Area, Kern County, California. Final Report: July 7, 2009 – July 9, 2010. Prepared for CH2M HILL, Oakland, California. Prepared by Western EcoSystems Technology, Inc. (WEST), Cheyenne, Wyoming. October 15, 2010.
- Solick, D. I., C. Nations, and J. C. Gruver. 2011. Activity Rates and Call Quality by Full-Spectrum Bat Detectors. Presented at the 41st Annual Symposium of the North American Society for Bat Research, October 26-29, 2011, Toronto, Ontario.
- South Dakota Game, Fish and Parks (SDGFP). 2016. Rare, Threatened or Endangered Animals Tracked by the South Dakota Natural Heritage Program. Accessed November 2016. Available online at: <http://gfp.sd.gov/wildlife/threatened-endangered/rare-animal.aspx>
- Stantec Consulting, Inc. (Stantec). 2008a. 2007 Spring, Summer, and Fall Post-Construction Bird and Bat Mortality Study at the Mars Hill Wind Farm, Maine. Prepared for UPC Wind Management, LLC, Cumberland, Maine. Prepared by Stantec (formerly Woodlot Alternatives, Inc.), Topsham, Maine. January 2008.
- Stantec Consulting, Inc. (Stantec). 2008b. Fall 2007 Migration Survey Report: Visual, Acoustic, and Radar Surveys of Bird and Bat Migration Conducted at the Proposed Record Hill Wind Project in Roxbury, Maine. Prepared for Independence Wind, LLC, Cumberland Foreside, Maine. Prepared by Stantec (formerly Woodlot Alternatives, Inc.), Topsham, Maine. October 2008.
- Stantec Consulting, Inc. (Stantec). 2009a. Post-Construction Monitoring at the Mars Hill Wind Farm, Maine - Year 2, 2008. Prepared for First Wind Management, LLC, Portland, Maine. Prepared by Stantec Consulting, Topsham, Maine. January 2009.
- Stantec Consulting, Inc. (Stantec). 2009b. Post-Construction Monitoring at the Munnsville Wind Farm, New York: 2008. Prepared for E.ON Climate and Renewables, Austin, Texas. Prepared by Stantec Consulting, Topsham, Maine. January 2009.
- Stantec Consulting, Inc. (Stantec). 2009c. Stetson I Mountain Wind Project: Year 1 Post-Construction Monitoring Report, 2009 for the Stetson Mountain Wind Project in Penobscot and Washington Counties, Maine. Prepared for First Wind Management, LLC. Portland, Maine. Prepared by Stantec, Topsham, Maine. December 2009.
- Stantec Consulting, Inc. (Stantec). 2010. Cohocton and Dutch Hill Wind Farms Year 1 Post-Construction Monitoring Report, 2009, for the Cohocton and Dutch Hill Wind Farms in Cohocton, New York. Prepared for Canandaigua Power Partners, LLC and Canandaigua Power Partners II, LLC, Portland, Maine. Prepared by Stantec, Topsham, Maine. January 2010.

- Stantec Consulting, Inc. (Stantec). 2011a. Cohocton and Dutch Hill Wind Farms Year 2 Post-Construction Monitoring Report, 2010, for the Cohocton and Dutch Hill Wind Farms in Cohocton, New York. Prepared for Canandaigua Power Partners, LLC, and Canandaigua Power Partners II, LLC, Portland, Maine. Prepared by Stantec, Topsham, Maine. October 2011.
- Stantec Consulting, Inc. (Stantec). 2011b. Post-Construction Monitoring 2010 Final Annual Report – Year 1, Milford Wind Corridor Phase I, Milford, Utah. Prepared for First Wind Management, LLC, Portland, Maine. Prepared by Stantec, Topsham, Maine. August 2011.
- Stantec Consulting, Inc. (Stantec). 2012a. 2011 Post-Construction Monitoring Report, Kibby Wind Power Project, Franklin County, Maine. Prepared for TransCanada Hydro Northeast, Inc., North Walpole, New Hampshire. Prepared by Stantec, Topsham, Maine. March 2012.
- Stantec Consulting, Inc. (Stantec). 2012b. Post-Construction Monitoring 2011 - 2012, Milford Wind Corridor Phase I and II, Milford, Utah. Prepared for First Wind Management, LLC, Portland, Maine. Prepared by Stantec, Topsham, Maine. May 2012.
- Stantec Consulting, Inc. (Stantec). 2013a. Palouse Wind Post-Construction Wildlife Monitoring Report, 2012-2013. Prepared for Palouse Wind, Whitman County, Washington. Prepared by Stantec, Topsham, Maine. December 2013.
- Stantec Consulting, Inc. (Stantec). 2013b. Record Hill Wind Project Post-Construction Monitoring Report, 2012. Prepared for Record Hill Wind LLC, Lyme, New Hampshire. Prepared by Stantec, Topsham, Maine. March 2013. Available online at: [http://www.maine.gov/dep/ftp/WindPowerProjectFiles/PostConstructionMonitoring/RH%202012%20PCM%20Report\\_031313.pdf](http://www.maine.gov/dep/ftp/WindPowerProjectFiles/PostConstructionMonitoring/RH%202012%20PCM%20Report_031313.pdf)
- Stantec Consulting, Inc. (Stantec). 2013c. Rollins Wind Project Post-Construction Monitoring Report, 2012. Prepared for First Wind, Portland, Maine. Prepared by Stantec, Topsham, Maine. March 2013.
- Stantec Consulting, Inc. (Stantec). 2013d. Steel Winds I and II Post-Construction Monitoring Report, 2012, Lackwanna and Hamburg, New York. Prepared for First Wind Management, LLC, Portland, Maine. Prepared by Stantec, Topsham, Maine. April 2013.
- Stantec Consulting, Inc. (Stantec). 2013e. Stetson II Wind Project Post-Construction Monitoring Report, 2012. Prepared for First Wind, Portland, Maine. Prepared by Stantec, Topsham, Maine. March 2013.
- Stantec Consulting, Inc. (Stantec). 2014. Stetson I Wind Project 2013 Post-Construction Wildlife Monitoring Report, Year 5. Stetson I Wind Project, Washington County, Maine. Prepared for First Wind, Portland, Maine. Prepared by Stantec, Topsham, Maine. February 2014.
- Stantec Consulting, Inc. (Stantec). 2015. Record Hill Wind Project Year 2 Post-Construction Wildlife Monitoring Report, 2014. Prepared for Record Hill Wind LLC and Wagner Forest Management, Ltd., Lyme, New Hampshire. Prepared by Stantec Consulting, Topsham, Maine. March 2015.
- Stantec Consulting Ltd. (Stantec Ltd.). 2008. Melancton I Wind Plant Post-Construction Bird and Bat Monitoring Report: 2007. File No. 160960220. Prepared for Canadian Hydro Developers, Inc., Guelph, Ontario. Prepared by Stantec Ltd., Guelph, Ontario. June 2008.
- Stantec Consulting Ltd. (Stantec Ltd.). 2010a. Wolfe Island Ecopower Centre Post-Construction Followup Plan. Bird and Bat Resources Monitoring Report No. 1: May - June 2009. File No. 160960494. Prepared for Canadian Hydro Developers, Inc.'s wholly owned subsidiary, Canadian Renewable Energy Corporation. Prepared by Stantec Ltd., Guelph, Ontario. February 2010.

- Stantec Consulting Ltd. (Stantec Ltd.). 2010b. Wolfe Island Ecopower Centre Post-Construction Followup Plan. Bird and Bat Resources Monitoring Report No. 2: July - December 2009. File No. 160960494. Prepared for TransAlta Corporation's wholly owned subsidiary, Canadian Renewable Energy Corporation. Prepared by Stantec Ltd., Guelph, Ontario. May 2010.
- Stantec Consulting Ltd. (Stantec Ltd.). 2011a. Wolfe Island Wind Plant Post-Construction Follow-up Plan. Bird and Bat Resources Monitoring Report No. 3: January - June 2010. File No. 160960494. Prepared for TransAlta Corporation's wholly owned subsidiary, Canadian Renewable Energy Corporation. Prepared by Stantec Consulting Ltd., Guelph, Ontario. January 2011.
- Stantec Consulting Ltd. (Stantec Ltd.). 2011b. Wolfe Island Wind Plant Post-Construction Followup Plan. Bird and Bat Resources Monitoring Report No. 4: July - December 2010. File No. 160960494. Prepared for TransAlta Corporation's wholly owned subsidiary, Canadian Renewable Energy Corporation. Prepared by Stantec Consulting Ltd., Guelph, Ontario. July 2011.
- Stantec Consulting Ltd. (Stantec Ltd.). 2011c. Wolfe Island Wind Plant Post-Construction Followup Plan. Bird and Bat Resources Monitoring Report No. 5: January - June 2011. File No. 160960494. Prepared for TransAlta Corporation's wholly owned subsidiary, Canadian Renewable Energy Corporation. Prepared by Stantec Consulting Ltd., Guelph, Ontario. December 2011.
- Stantec Consulting Ltd. (Stantec Ltd.). 2012. Wolfe Island Wind Plant Post-Construction Follow-up Plan. Bird and Bat Resources Monitoring Report No. 6: July-December 2011. File No. 160960494. Prepared for TransAlta Corporation's wholly owned subsidiary, Canadian Renewable Energy Corporation. Prepared by Stantec Consulting Ltd., Guelph, Ontario. July 2012.
- Stantec Consulting Ltd. (Stantec Ltd.). 2014. Wolfe Island Wind Plant Post-Construction Follow-up Plan. Bird and Bat Resources Monitoring Report No. 7: January - June 2012. File No. 160960494. Prepared for TransAlta Corporation's wholly owned subsidiary, Canadian Renewable Energy Corporation. Prepared by Stantec Consulting Ltd., Guelph, Ontario. April 2014. Available online at: [http://www.transalta.com/sites/default/files/WolfeIsland\\_TransAlta\\_PostConstruction\\_BirdBat\\_Report\\_7.pdf](http://www.transalta.com/sites/default/files/WolfeIsland_TransAlta_PostConstruction_BirdBat_Report_7.pdf)
- Stantec Consulting Services, Inc. (Stantec Consulting). 2012. Post-Construction Monitoring, Summer 2011 - Spring 2012. Year 1 Annual Report. Kittitas Valley Wind Power Project, Cle Elum, Washington. Prepared for Sagebrush Power Partners, LLC, Houston, Texas. Prepared by Stantec Consulting, Salt Lake City, Utah.
- Tetra Tech. 2013. Spruce Mountain Wind Project Post-Construction Bird and Bat Fatality and Raptor Monitoring: Year 1 Annual Report. Prepared for Patriot Renewables. Prepared by Tetra Tech, Portland, Maine. May 2013.
- Thompson, J. and K. Bay. 2012. Post-Construction Fatality Surveys for the Dry Lake II Wind Project: February 2011 – February 2012. Prepared for Iberdrola Renewables, LLC, Portland, Oregon. Prepared by Western Ecosystems Technology, Inc. (WEST), Cheyenne, Wyoming. June 6, 2012.
- Thompson, J., D. Solick, and K. Bay. 2011. Post-Construction Fatality Surveys for the Dry Lake Phase I Wind Project. Iberdrola Renewables: September 2009 - November 2010. Prepared for Iberdrola Renewables, Portland, Oregon. Prepared by Western Ecosystems Technology, Inc. (WEST), Cheyenne, Wyoming. February 10, 2011.
- Tidhar, D., W. Tidhar, and M. Sonnenberg. 2010. Post-Construction Fatality Surveys for Lempster Wind Project, Iberdrola Renewables. Prepared for Lempster Wind, Llc, Lempster Wind Technical Advisory Committee, and Iberdrola Renewables, Inc. Prepared by Western EcoSystems Technology Inc. (WEST), Waterbury, Vermont. September 30, 2010.

- Tidhar, D., W. L. Tidhar, L. McManus, and Z. Courage. 2011. 2010 Post-Construction Fatality Surveys for the Lempster Wind Project, Lempster, New Hampshire. Prepared for Iberdrola Renewables, Inc. and the Lempster Wind Technical Committee. Prepared by Western EcoSystems Technology, Inc., Waterbury, Vermont. May 18, 2011.
- Tidhar, D., L. McManus, Z. Courage, and W. L. Tidhar. 2012a. 2010 Post-Construction Fatality Monitoring Study and Bat Acoustic Study for the High Sheldon Wind Farm, Wyoming County, New York. Final Report: April 15 - November 15, 2010. Prepared for High Sheldon Wind Farm, Sheldon Energy LLC, Chicago, Illinois. Prepared by Western EcoSystems Technology, Inc. (WEST), Waterbury, Vermont. April 15, 2012.
- Tidhar, D., L. McManus, D. Solick, Z. Courage, and K. Bay. 2012b. 2011 Post-Construction Fatality Monitoring Study and Bat Acoustic Study for the High Sheldon Wind Farm, Wyoming County, New York. Final Report: April 15 - November 15, 2011. Prepared for High Sheldon Wind Farm, Sheldon Energy LLC, Chicago, Illinois. Prepared by Western EcoSystems Technology, Inc. (WEST), Waterbury, Vermont. April 25, 2012.
- Tidhar, D., J. Ritzert, M. Sonnenberg, M. Lout, and K. Bay. 2013a. 2012 Post-Construction Fatality Monitoring Study for the Maple Ridge Wind Farm, Lewis County, New York. Final Report: July 12 - October 15, 2012. Prepared for EDP Renewables North, Houston, Texas. Prepared by Western EcoSystems Technology, Inc. (WEST), NE/Mid-Atlantic Branch, Waterbury, Vermont. February 12, 2013.
- Tidhar, D., M. Sonnenberg, and D.P. Young, Jr. 2013b. 2012 Post-Construction Carcass Monitoring Study for the Beech Ridge Wind Farm, Greenbrier County, West Virginia. Final Report: April 1 - October 28, 2012. Prepared for Beech Ridge Wind Farm, Beech Ridge Energy, LLC, Chicago, Illinois. Prepared by Western EcoSystems Technology, Inc. (WEST), NE/Mid-Atlantic Branch, Waterbury, Vermont. January 18, 2013.
- Tierney, R. 2007. Buffalo Gap I Wind Farm Avian Mortality Study: February 2006-January 2007. Final Survey Report. Prepared for AES SeaWest, Inc. TRC, Albuquerque, New Mexico. TRC Report No. 110766-C-01. May 2007.
- Tierney, R. 2009. Buffalo Gap 2 Wind Farm Avian Mortality Study: July 2007 - December 2008. Final Survey Report. Submitted by TRC, Albuquerque, New Mexico. TRC Report No. 151143-B-01. June 2009.
- TRC Environmental Corporation. 2008. Post-Construction Avian and Bat Fatality Monitoring and Grassland Bird Displacement Surveys at the Judith Gap Wind Energy Project, Wheatland County, Montana. Prepared for Judith Gap Energy, LLC, Chicago, Illinois. TRC Environmental Corporation, Laramie, Wyoming. TRC Project 51883-01 (112416). January 2008. <http://www.newwest.net/pdfs/AvianBatFatalityMonitoring.pdf>
- URS Corporation. 2010a. Final Goodnoe Hills Wind Project Avian Mortality Monitoring Report. Prepared for PacifiCorp, Salt Lake City, Utah. Prepared by URS Corporation, Seattle, Washington. March 16, 2010.
- URS Corporation. 2010b. Final Marengo I Wind Project Year One Avian Mortality Monitoring Report. Prepared for PacifiCorp, Salt Lake City, Utah. Prepared by URS Corporation, Seattle, Washington. March 22, 2010.
- URS Corporation. 2010c. Final Marengo II Wind Project Year One Avian Mortality Monitoring Report. Prepared for PacifiCorp, Salt Lake City, Utah. Prepared by URS Corporation, Seattle, Washington. March 22, 2010.

- US Fish and Wildlife Service (USFWS). 2012a. Land-Based Wind Energy Guidelines. March 23, 2012. 82 pp. Available online at: [http://www.fws.gov/cno/pdf/Energy/2012\\_Wind\\_Energy\\_Guidelines\\_final.pdf](http://www.fws.gov/cno/pdf/Energy/2012_Wind_Energy_Guidelines_final.pdf)
- US Fish and Wildlife Service (USFWS). 2012b. White-Nose Syndrome: A Devastating Disease of North American Bats. Updated March 20, 2012. Information online at: <http://www.fws.gov/WhiteNoseSyndrome/>
- US Fish and Wildlife Service (USFWS). 2015. Endangered and Threatened Wildlife and Plants; Threatened Species Status for the Northern Long-Eared Bat with 4(D) Rule; Final Rule and Interim Rule. Department of the Interior, Fish and Wildlife Service, 50 CFR Part 17. 80 Federal Register (FR) 63: 17974-18033. April 2, 2015. Available online at: <http://www.fws.gov/midwest/endangered/mammals/nleeb/pdf/FRnleebFinalListing02April2015.pdf>
- US Fish and Wildlife Service (USFWS). 2016. Endangered and Threatened Wildlife and Plants; 4(D) Rule for the Northern Long-Eared Bat; Final Rule. Department of the Interior, Fish and Wildlife Service, 50 CFR Part 17. 81 Federal Register (FR) 9: 1900-1922. January 14, 2016. Available online at: <http://www.fws.gov/Midwest/endangered/mammals/nleeb/pdf/FRnleebFinal4dRule14Jan2016.pdf>
- US Geological Survey (USGS). 2010. White-Nose Syndrome Threatens the Survival of Hibernating Bats in North America. USGS Fort Collins Science Center.
- US Geological Survey (USGS). 2016. The National Map/Us Topo. Last updated January 2016. Homepage available at: <http://nationalmap.gov/ustopo/index.html>
- Ventus Environmental Solutions (Ventus). 2012. Vantage Wind Energy Center Avian and Bat Monitoring Study: March 2011- March 2012. Prepared for Vantage Wind Energy, LLC, Chicago, Illinois. Prepared by Ventus, Portland, Oregon. May 16, 2012.
- Warnecke, L., J. M. Turner, T. K. Bollinger, J. M. Lorch, V. Misra, P. M. Cryan, G. Wibbelt, D. S. Blehert, and C. K. R. Willis. 2012. Inoculation of Bats with European *Geomyces Destructans* Supports the Novel Pathogen Hypothesis for the Origin of White-Nose Syndrome. *Proceedings of the National Academy of Sciences* 109(18): 6999-7003.
- Watt, M. A. and D. Drake. 2011. Assessing Bat Use at the Forward Energy Center. Final Report. PSC REF#:152051. Public Service Commission of Wisconsin. Prepared for Forward Energy LLC. Prepared by Department of Forest and Wildlife Ecology, University of Wisconsin-Madison, Madison, Wisconsin. August 2011.
- Weller, T. J. and J. A. Baldwin. 2012. Using Echolocation Monitoring to Model Bat Occupancy and Inform Mitigations at Wind Energy Facilities. *Journal of Wildlife Management* 76: 619-631.
- Western EcoSystems Technology, Inc. (WEST). 2006. Diablo Winds Wildlife Monitoring Progress Report, March 2005 - February 2006. Technical report submitted to FPL Energy and Alameda County California. WEST. Cheyenne, Wyoming.
- Western EcoSystems Technology, Inc. (WEST). 2008. Diablo Winds Wildlife Monitoring Progress Report: March 2005 – February 2007. Prepared by WEST, Cheyenne, Wyoming. August 2008.
- Western EcoSystems Technology, Inc. (WEST). 2011. Post-Construction Fatality Surveys for the Barton Chapel Wind Project: Iberdrola Renewables. Version: July 2011. Iberdrola Renewables, Portland, Oregon.

- Young, D.P., Jr., W. P. Erickson, R. E. Good, M. D. Strickland, and G. D. Johnson. 2003a. Avian and Bat Mortality Associated with the Initial Phase of the Foote Creek Rim Windpower Project, Carbon County, Wyoming, Final Report, November 1998 - June 2002. Prepared for Pacificorp, Inc. Portland, Oregon, SeaWest Windpower Inc. San Diego, California, and Bureau of Land Management, Rawlins District Office, Rawlins, Wyoming. January 10, 2003. Available online at: [http://west-inc.com/reports/fcr\\_final\\_mortality.pdf](http://west-inc.com/reports/fcr_final_mortality.pdf)
- Young, D.P., Jr., W. P. Erickson, M. D. Strickland, R. E. Good, and K. J. Sernka. 2003b. Comparison of Avian Responses to Uv-Light-Reflective Paint on Wind Turbines. Subcontract Report July 1999 – December 2000. NREL/SR-500-32840. Prepared for National Renewable Energy Laboratory, Golden, Colorado, by Western EcoSystems Technology, Inc. (WEST), Cheyenne, Wyoming. Foote Creek Rim Wind Plant, Carbon County, Wyoming. January 2003. <http://www.west-inc.com>
- Young, D.P., Jr., J. Jeffrey, W. P. Erickson, K. Bay, V. K. Poulton, K. Kronner, R. Gritski, and J. Baker. 2006. Eurus Combine Hills Turbine Ranch. Phase 1 Post Construction Wildlife Monitoring First Annual Report: February 2004 - February 2005. Technical report prepared for Eurus Energy America Corporation, San Diego, California, and the Combine Hills Technical Advisory Committee, Umatilla County, Oregon. Prepared by Western EcoSystems Technology, Inc. (WEST), Cheyenne, Wyoming, and Walla Walla Washington, and Northwest Wildlife Consultants, Inc. (NWC), Pendleton, Oregon. February 21, 2006. Available online at: <http://wind.nrel.gov/public/library/young7.pdf>
- Young, D.P., Jr., W. P. Erickson, J. Jeffrey, and V. K. Poulton. 2007. Puget Sound Energy Hopkins Ridge Wind Project Phase 1 Post-Construction Avian and Bat Monitoring First Annual Report, January - December 2006. Technical report for Puget Sound Energy, Dayton, Washington and Hopkins Ridge Wind Project Technical Advisory Committee, Columbia County, Washington. Western EcoSystems Technology, Inc. (WEST) Cheyenne, Wyoming, and Walla Walla, Washington. 25 pp.
- Young, D.P., Jr., K. Bay, S. Nomani, and W. Tidhar. 2009a. Nedpower Mount Storm Wind Energy Facility, Post-Construction Avian and Bat Monitoring: March - June 2009. Prepared for NedPower Mount Storm, LLC, Houston, Texas. Prepared by Western EcoSystems Technology (WEST), Inc., Cheyenne, Wyoming. August 17, 2009.
- Young, D.P., Jr., W. P. Erickson, K. Bay, S. Nomani, and W. Tidhar. 2009b. Mount Storm Wind Energy Facility, Phase 1 Post-Construction Avian and Bat Monitoring, July - October 2008. Prepared for NedPower Mount Storm, LLC, Houston, Texas. Prepared by Western EcoSystems Technology (WEST), Inc., Cheyenne, Wyoming. February 17, 2009.
- Young, D.P., Jr., J. D. Jeffrey, K. Bay, and W. P. Erickson. 2009c. Puget Sound Energy Hopkins Ridge Wind Project, Phase 1, Columbia County, Washington. Post-Construction Avian and Bat Monitoring, Second Annual Report: January - December, 2008. Prepared for Puget Sound Energy, Dayton, Washington, and the Hopkins Ridge Wind Project Technical Advisory Committee, Columbia County, Washington. Prepared by Western EcoSystems Technology, Inc. (WEST), Cheyenne, Wyoming, and Walla Walla, Washington. May 20, 2009.
- Young, D.P., Jr., K. Bay, S. Nomani, and W. Tidhar. 2010a. Nedpower Mount Storm Wind Energy Facility, Post-Construction Avian and Bat Monitoring: April - July 2010. Prepared for NedPower Mount Storm, LLC, Houston, Texas. Prepared by Western EcoSystems Technology, Inc. (WEST), Cheyenne, Wyoming. August 27, 2010.
- Young, D.P., Jr., K. Bay, S. Nomani, and W. Tidhar. 2010b. Nedpower Mount Storm Wind Energy Facility, Post-Construction Avian and Bat Monitoring: July - October 2009. Prepared for NedPower Mount Storm, LLC, Houston, Texas. Prepared by Western EcoSystems Technology (WEST), Inc., Cheyenne, Wyoming. February 12, 2010.



- Young, D.P., Jr., S. Nomani, Z. Courage, and K. Bay. 2011a. Nedpower Mount Storm Wind Energy Facility, Post-Construction Avian and Bat Monitoring: April - July 2011. Prepared for NedPower Mount Storm, LLC, Houston, Texas. Prepared by Western EcoSystems Technology (WEST), Inc., Cheyenne, Wyoming. August 29, 2011.
- Young, D.P., Jr., S. Nomani, W. Tidhar, and K. Bay. 2011b. Nedpower Mount Storm Wind Energy Facility, Post-Construction Avian and Bat Monitoring: July - October 2010. Prepared for NedPower Mount Storm, LLC, Houston, Texas. Prepared by Western EcoSystems Technology (WEST), Inc., Cheyenne, Wyoming. February 10, 2011.
- Young, D.P., Jr., M. Lout, Z. Courage, S. Nomani, and K. Bay. 2012a. 2011 Post-Construction Monitoring Study, Criterion Wind Project, Garrett County, Maryland: April - November 2011. Prepared for Criterion Power Partners, LLC, Oakland, Maryland. Prepared by Western EcoSystems Technology, Inc. (WEST), Cheyenne, Wyoming, and Waterbury, Vermont. April 20, 2012. Revised November 25, 2013.
- Young, D.P., Jr., S. Nomani, Z. Courage, and K. Bay. 2012b. Nedpower Mount Storm Wind Energy Facility, Post-Construction Avian and Bat Monitoring: July - October 2011. Prepared for NedPower Mount Storm, LLC, Houston, Texas. Prepared by Western EcoSystems Technology (WEST), Inc., Cheyenne, Wyoming. February 27, 2012.
- Young, D.P., Jr., C. Nations, M. Lout, and K. Bay. 2013. 2012 Post-Construction Monitoring Study, Criterion Wind Project, Garrett County, Maryland. April - November 2012. Prepared for Criterion Power Partners, LLC, Oakland, Maryland. Prepared by Western EcoSystems Technology, Inc. (WEST), Cheyenne, Wyoming, and Waterbury, Vermont. January 15, 2013.
- Young, D.P., Jr., M. Kauffman, M. Lout, and K. Bay. 2014a. 2013 Post-Construction Monitoring Study, Criterion Wind Project, Garrett County, Maryland. April - November 2013. Prepared for Criterion Power Partners, LLC, Oakland, Maryland. Prepared by Western EcoSystems Technology, Inc. (WEST), Cheyenne, Wyoming, and Waterbury, Vermont. February 18, 2014.
- Young, D.P., Jr., M. Lout, L. McManus, and K. Bay. 2014b. 2013 Post-Construction Monitoring Study, Beech Ridge Wind Energy Project, Greenbrier and Nicholas Counties, West Virginia. Final Report: April 1 - November 15, 2013. Prepared for Beech Ridge Energy, LLC, Chicago, Illinois. Prepared by Western EcoSystems Technology, Inc. (WEST), Cheyenne, Wyoming, and Burlington, Vermont. January 28, 2014.