

**Avian Use Surveys
for the Big Blue River Wind Project
Henry County, Indiana**

December 2015 – November 2016



Prepared for:

Calpine Corporation

717 Texas Ave Suite 1000
Houston, Texas 77002

Prepared by:

Rhett E. Good, Anna Ciecka, and Aaron McAlexander

Western EcoSystems Technology, Inc.
408 West 6th Street
Bloomington, Indiana 47404

May 30, 2019



EXECUTIVE SUMMARY

Calpine Corporation (Calpine) is assessing the feasibility of developing the Big Blue River Wind Project (BBRWP) located in Henry County, Indiana. Calpine asked Western Ecosystems Technology, Inc. (WEST) to conduct fixed-point count avian use surveys to estimate potential impacts of the BBRWP to eagles and other birds consistent with the US Fish and Wildlife Service (USFWS) *Eagle Conservation Plan Guidance* and USFWS *Land-Based Wind Energy Guidelines*.

Ten-minute small bird and 60-minute large bird fixed-point count surveys were conducted at 43 points in the BBRWP from December 3, 2015 through June 30, 2016, and at 46 points from July 1, 2016 through November 29, 2016 due to a small change in the project boundary. Seven bald eagles were observed throughout all surveys. Five occurred during large bird use surveys, one during small bird surveys, and one incidental. Overall eagle use within the BBRWP was low, with only three minutes recorded for eagles flying within the rotor swept height. The BBRWP lacks suitable bald eagle nesting and hunting habitat throughout the majority development area. Summit Lake State Park, located outside the BBWRP, and Province Ponds Fish and Wildlife Area, a small lake and wetland located in the northeast portion of the BBWRP, boundary provide more suitable habitat for nesting and foraging.

Eighty-four unique bird species were observed during all fixed-point count avian use surveys in the BBRWP. European starling, red-winged blackbird, and horned lark were the most abundant bird species observed during small bird fixed-point count surveys at BBRWP. Canada geese and turkey vultures were the most abundant birds observed during the large bird fixed-point count surveys. Turkey vulture and red-tailed hawk were the most frequently observed large bird species in the BBRWP.

No species protected by the federal Endangered Species Act were observed during the surveys. Two state-endangered species were observed: northern harrier and osprey. In addition, five species of concern were observed: bald eagle, common nighthawk, red-shouldered hawk, sandhill crane, and sharp-shinned hawk. The potential for collision with turbines for these species is expected to be low due to their low abundance and the relatively low fatality numbers documented at other wind energy facilities with publicly available data.

STUDY PARTICIPANTS

Western EcoSystems Technology, Inc.

Rhett Good	Project Manager
Aaron McAlexander	Field Supervisor
Anna Ciecka	Report Compiler
Wendy Bruso	Technical Report Manager
Katie Michaels	Technical Editor
Jeanette Haddock	Technical Editor
Grant Gardner	GIS Technician
Kristen Klaphake	GIS Technician
Jeff Fruhwirth	GIS Technician
Emily Bradway	Field Technician

REPORT REFERENCE

Good, R.E., A. Ciecka, A., and A.M. McAlexander. 2019. Avian Use Surveys for the Big Blue River Wind Project, Henry County, Indiana. Draft Report: December 2015 – November 2016. Prepared for Calpine Corporation, Houston, Texas. Prepared by Western EcoSystems Technology, Inc. (WEST), Bloomington, Indiana. May 30, 2019.

TABLE OF CONTENTS

EXECUTIVE SUMMARY i

INTRODUCTION 1

STUDY AREA 1

METHODS 4

 Fixed-Point Count Avian Use Surveys..... 4

 Survey Plots 4

 Survey Methods 4

 Observation Schedule 5

 Statistical Analysis 5

 Quality Assurance and Quality Control 5

 Data Compilation and Storage..... 5

 Fixed-Point Count Avian Use Surveys 6

 Bird Diversity and Species Richness..... 6

 Mean Use, Seasonal Variations, and Frequency of Occurrence 6

 Bird Flight Height and Behavior..... 6

 Spatial Use and Mapping..... 6

 Raptor Nest Surveys 6

RESULTS 7

 Fixed-Point Count Avian Use Surveys..... 7

 Eagles..... 7

 Small Bird Use Surveys..... 9

 Bird Diversity and Abundance 9

 Species Richness, Mean Use, and Seasonal Variation..... 9

 Large Bird Use Surveys..... 13

 Bird Diversity and Abundance 13

 Species Richness, Mean Use, and Seasonal Variation 13

 Flight Height and Behavior..... 15

 Spatial Use and Mapping..... 15

 Sensitive Species Observations 18

 Incidental Observations..... 20

 Raptor Nest Survey..... 20

DISCUSSION..... 24

 Eagles..... 24

Passerines24
Large Birds25
Diurnal Raptors25
Sensitive Species.....29
 Northern Harrier29
 Sandhill Crane.....29
 Osprey, Common Nighthawk, Red-shouldered Hawk, and Sharp-shinned Hawk29
REFERENCES30

LIST OF TABLES

Table 1. Eagle observations summary at the Big Blue River Wind Project from December 3, 2015 to November 29, 2016 7
Table 2. Summary of species richness (species/100-meter plot/10-minute survey) of small birds and sample size during the fixed-point count small bird use surveys conducted in the Big River Wind Project from December 3, 2015 - November 29, 2016. 9
Table 3. Mean bird use (number of birds/100-meter plot/10-minute survey), percent use, and frequency of occurrence (%) by season for small bird and large bird species by type and/or subtype during the small bird fixed-point count surveys conducted in the Big Blue River Wind Project from December 3, 2015 to November 29, 2016..... 10
Table 4. Summary of large bird species richness (species/800-meter plot/60-minute survey) and sample size during large bird fixed-point count surveys conducted in the Big Blue River Wind Project from December 3, 2015 to November 29, 2016..... 13
Table 5. Mean bird use (number of birds/800-meter plot/60-minute survey), percent use, and frequency of occurrence (%) by season for all large birds by type and/or subtype during large bird fixed-point count surveys conducted in the Big Blue River Wind Project from December 3, 2015 to November 29, 2016. 14
Table 6. Flight height characteristics of large birds by bird type and raptor subtype during the 60-minute fixed-point count avian use survey^a conducted in the Big Blue River Wind Project from December 3, 2015, to November 29, 2016. 15
Table 7. Mean use (number of birds/60-minute survey) by point for large birds observed during large bird fixed-point count avian use surveys conducted in the Big Blue River Wind Project from December 3, 2015 to November 29, 2016..... 16
Table 7, continued. Mean use (number of birds/60-minute survey) by point for large birds observed during large bird fixed-point count avian use surveys conducted in the Big Blue River Wind Project from December 3, 2015 to November 29, 2016..... 17
Table 8. Summary of sensitive species observed incidentally or during fixed-point (FP) count avian use surveys conducted in the Big Blue River Wind Project from December 3, 2015 to November 29, 2016. 18

Table 9. Incidental wildlife recorded while conducting all surveys at the Big Blue River Wind Project from December 3, 2015 to November 29, 2016.20

Table 10. Summary of nests located within the Big Blue River Wind Project and a 2-mile buffer, Henry county, Indiana from March 2 to March 15, 201621

LIST OF FIGURES

Figure 1. Location of the Big Blue River Wind Project area boundary, Henry County, Indiana. 2

Figure 2. Land cover types and fixed-point count stations in the Big Blue River Wind Project area, Henry County, Indiana (Homer et al. 2015, US Geological Survey National Land Cover Database 2011)..... 3

Figure 3. Project boundary and flight paths of eagles observed during fixed-point count avian use surveys conducted within the Big Blue River Wind Project, Henry County, Indiana from December 3, 2015 to November 29, 2016. 8

Figure 4. Flight paths of sensitive species observed during fixed-point count avian use surveys conducted within the Big Blue River Wind Project, Henry County, Indiana from December 3 to November 29, 2016.....19

Figure 5. Raptor nest locations in the Big Blue River Wind Project, Henry County, Indiana during ground-based surveys from March 2 to March 15, 2016.23

Figure 6. Comparison of diurnal raptor use (number of raptors/800-meter plot/20-minute survey) observed during fixed-point count avian use surveys at the Big Blue River Wind Project from December 3, 2015 to November 29, 2016, and annual diurnal raptor use recorded during comparable surveys at other North American wind energy projects.....27

Figure 6 (*continued*). Comparison of diurnal raptor use (number of raptors/800-meter plot/20-minute survey) observed during fixed-point count avian use surveys at the Big Blue River Wind Project from December 3, 2015 to November 29, 2016, and annual diurnal raptor use recorded during comparable surveys at other North American wind energy projects.....28

LIST OF APPENDICES

Appendix A. Descriptive Statistics for the Species Recorded During the 10-minute Fixed-Point Count Small Bird Use Surveys Conducted at the Big Blue River Wind Project in Henry County, Indiana, from December 3, 2015 to November 29, 2016

Appendix B. Descriptive Statistics for the Species Recorded During the 60-minute Fixed-Point Count Large Bird Use Surveys conducted at the Big Blue River Wind Project in Henry County, Indiana, from December 3, 2015 to November 29, 2016

Appendix C. North American Fatality Summary Table

Appendix D. Studies at North American Wind Energy Facilities that have Reported Species Composition of Bird Fatalities

INTRODUCTION

Calpine is currently assessing the feasibility of developing the Big Blue River Wind Project (BBRWP) to be located in east-central Indiana. Calpine asked Western Ecosystems Technology, Inc. (WEST) to conduct fixed-point count avian use surveys to estimate potential impacts of the BBRWP on eagles and other bird species consistent with the tiered process outlined in the US Fish and Wildlife Service (USFWS) *Land-Based Wind Energy Guidelines* (USFWS 2012) and the USFWS *Eagle Conservation Plan Guidance* (ECPG; USFWS 2013).

STUDY AREA

The BBRWP Project Area is to be located in Henry County, approximately 12 miles (mi; 19 kilometers [km]) southwest of the city of Muncie in east-central Indiana (Figure 1). The Project Area has a flat topography that is dominated by cultivated agriculture. Corn (*Zea mays*), and soy bean (*Glycine max*) are the most common crop types present. Grassland, developed areas (e.g., farmsteads), and forests compose a small portion of the Project Area (Homer et al. 2015, US Geological Survey National Land Cover Data 2011; Figure 2).

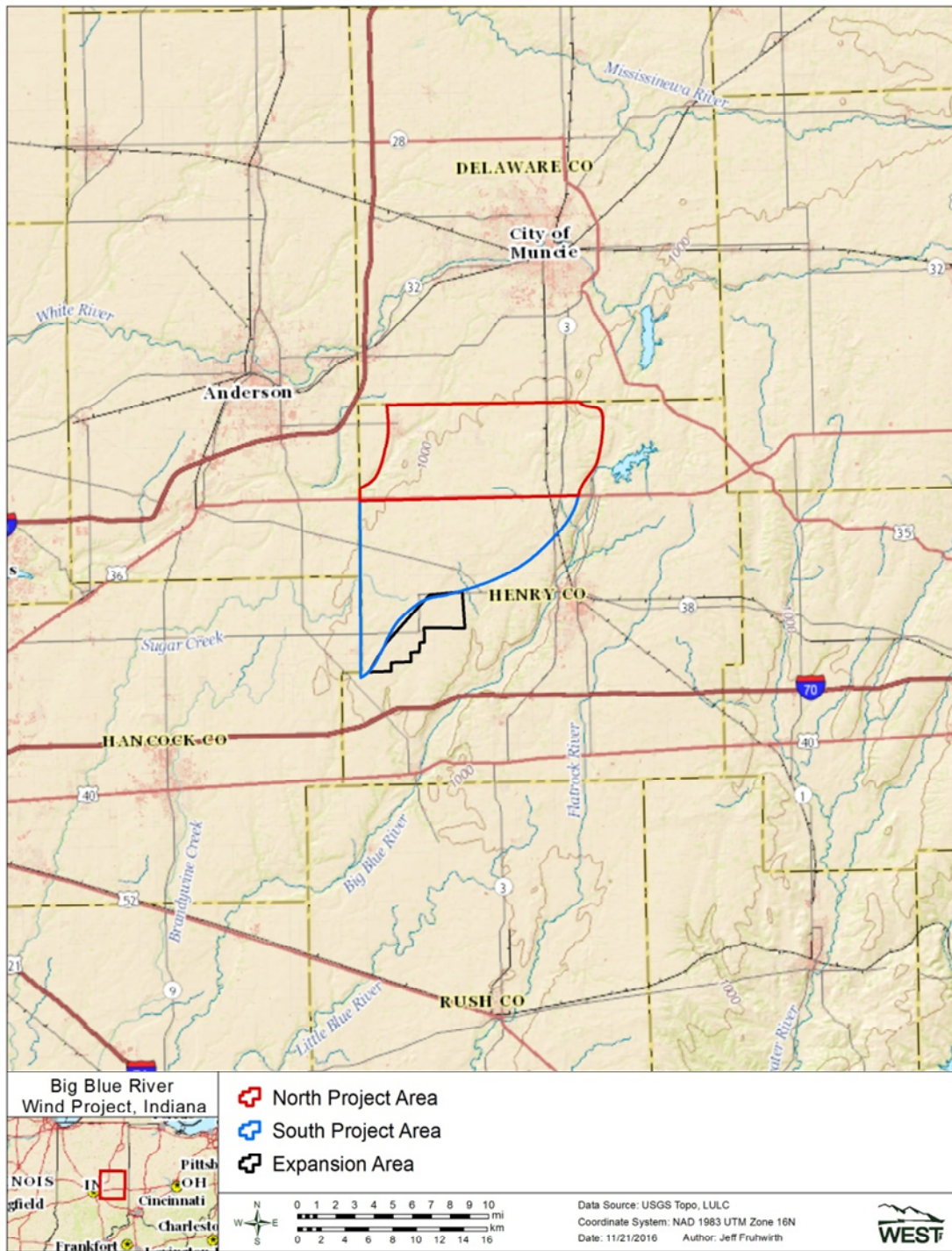


Figure 1. Location of the Big Blue River Wind Project area boundary, Henry County, Indiana.

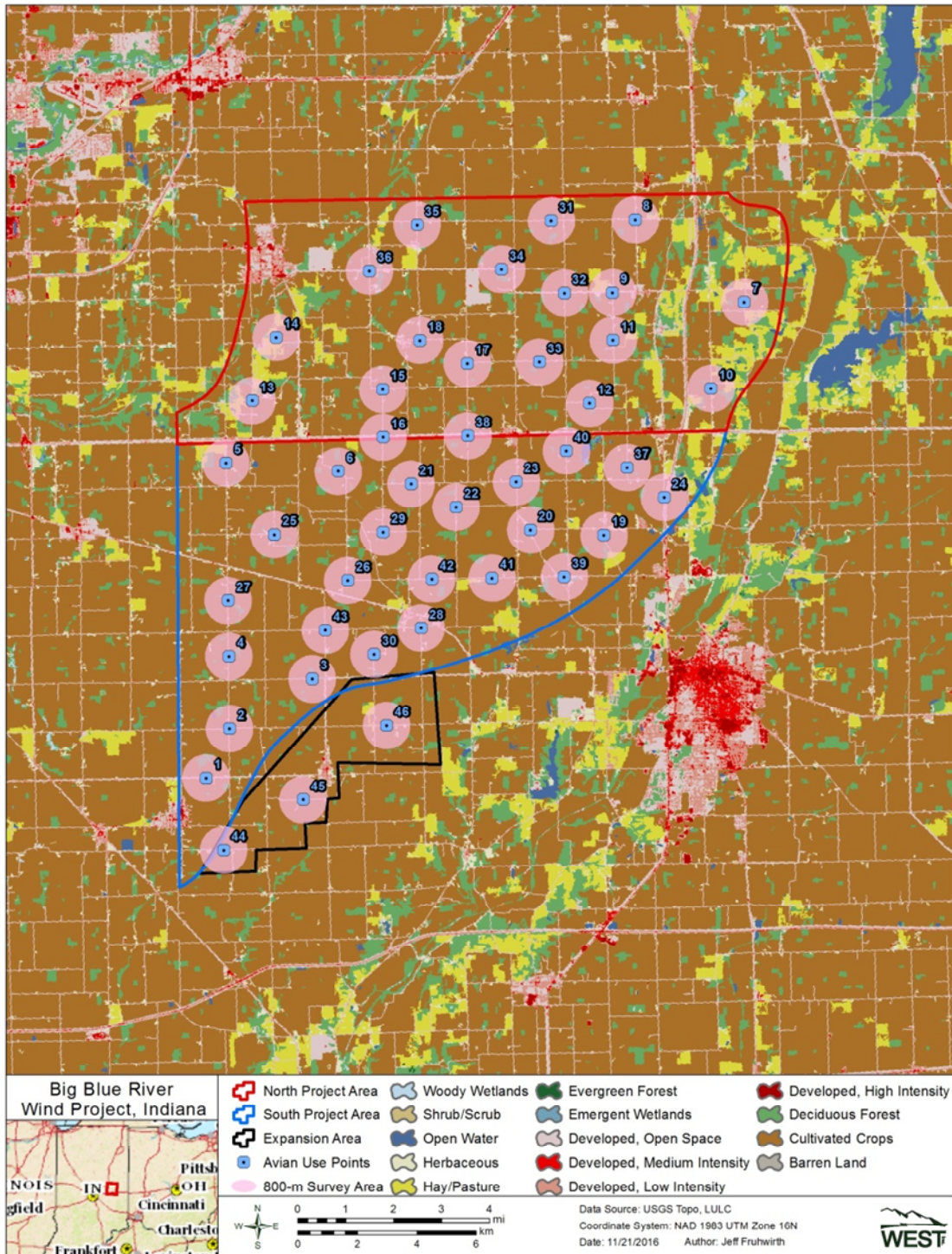


Figure 2. Land cover types and fixed-point count stations in the Big Blue River Wind Project area, Henry County, Indiana (Homer et al. 2015, US Geological Survey National Land Cover Database 2011).

METHODS

The studies in the Project Area consisted of the following: 1) small bird fixed-point count surveys, 2) large bird fixed-point count surveys, 3) incidental surveys, and 4) raptor nest surveys.

Fixed-Point Count Avian Use Surveys

The objective of the fixed-point count avian use surveys was to estimate the seasonal and spatial use of the study area by eagles and other bird species. Fixed-point count avian use surveys (using variable circular plots) were conducted in the Project Area using methods described by Reynolds et al. (1980) and were consistent with methods recommended in the USFWS *Land-Based Wind Energy Guidelines* and ECPG.

Survey Plots

Forty-three points were initially selected within the Project Area resulting in coverage of 30% of the study area (see North and South Project Areas; Figure 2). In July 2016, the Project Area boundary was expanded slightly to the south, and three additional survey points were added to maintain 30% coverage (see Expansion Area; Figure 2). Each survey plot was a 100-m (656-foot [ft]) radius circle centered on the point for small birds, within an 800-m (2,625-ft) radius circle centered on the point for large birds.

Survey Methods

Small bird fixed-point count surveys and large bird fixed-point count surveys were conducted once per month for the duration of one year at all survey points within the North and South Project Areas, and for five months at the three points within the Expansion Area. The first 10 minutes of each survey focused on small birds and passerines within a 200-m (656-ft) plot. Small birds were defined as cuckoos, hummingbirds, swifts, woodpeckers, and passerines. The goal of the 10-minute survey was to record use of the Project Area by passerines and sensitive species throughout the year. The next 60 minutes of each survey focused on eagles and large birds within an 800-m (2,625-ft) plot. The 60-minute large bird surveys were used to obtain estimates of eagle use and risk, and were consistent with the ECPG (USFWS 2013). Large birds also included waterbirds, waterfowl, shorebirds, diurnal raptors, vultures, upland game birds, doves and pigeons, large corvids, and goatsuckers. Eagles and threatened and endangered species were recorded during both small and large bird surveys.

The date, start and end time, and weather information (e.g., temperature, wind speed and direction, and cloud cover) were recorded for each survey. Species or best possible identification, number of individuals, sex and age class (if identifiable), distance from plot center when first observed, closest distance, altitude above ground, activity (behavior), and habitat(s) were recorded for each observation. Bird behavior and habitat type were recorded based on the point of first observation. Behavior categories included soaring flight, flapping-gliding, hunting, kiting-hovering, stooping/diving at prey, stooping or diving in an antagonistic context with other

bird species, perched, being mobbed, undulating/territorial flight, auditory, and other (noted in comments). Approximate flight height and distance from plot center at first observation were recorded to the nearest 5-m (16-ft) interval. Other information collected included if the observation was auditory only, as well as the 10-minute intervals of the survey during which the observation first occurred. Locations of eagles and species of concern recorded during surveys were recorded on field maps by unique observation number. Comments were recorded on the data sheet. For all eagle observations, additional behavior and habitat data was recorded during each 1-minute interval the bird was within view during the 60-minute surveys, in accordance with ECPG.

Observation Schedule

Ten-minute small bird and 60-minute large bird fixed-point count surveys were conducted at 43 points in the Project Area from December 3, 2015 through June 30, 2016, and at 46 points from July 1, 2016 through November 29, 2016. Fixed-point count avian use surveys were conducted monthly at each of the survey points, with 12 – 14 points being surveyed each week; surveys were conducted throughout daylight hours. A pre-established schedule was developed prior to the field surveys to ensure that each point was surveyed approximately the same number of times, to spread survey times throughout the day, and to minimize travel time between plots.

Eagles and federally or state-listed species observed within the Project Area but outside of scheduled survey times were recorded on in-transit or incidental wildlife observation data sheets. The data recorded were similar to those recorded during scheduled surveys, including observation number, location, date, time, species, number of individuals, distance from observer (meters [m]), sex/age class, and habitat.

Statistical Analysis

For analysis purposes, a visit was defined as the required length of time (days) to survey all of the plots once within the Project Area.

Quality Assurance and Quality Control

Quality assurance and quality control measures were implemented at all stages of the surveys, including in the field, during data entry and analysis, and report writing. Observers were responsible for inspecting data forms for completeness, accuracy, and legibility following each field survey. Potentially erroneous data were identified using a series of database queries. Irregular codes or data suspected as questionable were discussed with the observer and/or Project manager. Errors, omissions, or problems identified in later stages of analysis were traced back to the raw data forms, and appropriate changes in all steps were made.

Data Compilation and Storage

A Microsoft® SQL database was developed to store, organize, and retrieve survey data. Data were keyed into the electronic database using a pre-defined protocol to facilitate subsequent quality assurance and quality control, and data analysis. All data forms and electronic data files were retained for reference.

Fixed-Point Count Avian Use Surveys

Bird Diversity and Species Richness

Species richness (total number of unique species observed) was used to assess species diversity. Species lists and counts, including the number of individual observations and groups, were generated by season and included all observations of birds detected, regardless of their distance from the observer. In some cases, the tally of observations represented repeated sightings of the same individual. Species richness was calculated as the mean number of species observed per plot per survey, and was compared between seasons.

Mean Use, Seasonal Variations, and Frequency of Occurrence

Small birds detected within 100 m (656 ft) and large birds detected within 800 m (2,625 ft) of survey points were used to calculate mean use and frequency of occurrence. The first 20 minutes of each large bird fixed-point count survey was used to calculate raptor use of the Project Area in order to compare use rates to other wind energy projects with similarly collected raptor use data. For analysis, seasons were distinguished as spring (March 1 – May 1), summer (May 2 - August 31), fall (September 1 – November 29), and winter (November 30 – February 28). Seasonal mean use was calculated by first averaging the total number of birds observed within each survey plot during a visit, then averaging across survey plots within each visit, followed by averaging across visits within the season. Overall mean use was calculated as a weighted average of seasonal values by the number of days in each season. Frequency of occurrence provides a relative measure of species exposure in the Project Area and was calculated as the percent of surveys in which a particular bird type or species was observed.

Bird Flight Height and Behavior

The flight height recorded during the initial observation was used to calculate the percentage of birds flying within the rotor swept heights (RSH; estimated to be between 25 – 150 m [82 – 492 ft] above ground level) and mean flight height during the fixed-point count large bird use surveys. The percentage of birds flying within the RSH at any time was calculated using the lowest and highest flight heights recorded. Auditory only observations were excluded from flight height calculations.

Spatial Use and Mapping

Spatial use in the Project Area was evaluated by comparing mean use by point location and qualitative review of flight paths. Flight paths of all eagle and sensitive species were digitized and mapped in order to examine spatial patterns of use within the Project Area.

Raptor Nest Surveys

The purpose of the raptor nest survey was to identify raptor nest locations within 3.2 km (2 mi) of the Project Area. WEST performed a raptor nest survey from March 2 – March 15, 2016, when bald eagles and most of the regionally nesting raptors were expected to be engaged in nesting activity, but before trees had fully leafed out, permitting greater visibility of the nests.

Areas containing potentially suitable raptor and eagle nest habitat, such as riparian forested areas, shelterbelts, and woodlots were surveyed for potential raptor nests (defined here as stick nest structures large enough to accommodate a buteo-sized raptor or larger) from public roads within 3.2 km (2 mi) of the Project Area boundary. All potential nest sites were recorded using Locus Pro™ tablet software, and locations were digitized into Geographic Information System. The following data were recorded for each nest: location, species occupying nest, nest activity, nest substrate, and nest condition.

RESULTS

Fixed-Point Count Avian Use Surveys

A total of 1,062 10-minute small bird and 60-minute large bird fixed-point count avian use surveys were conducted within the Project Area during 12 visits for each point in the North and South Project areas and during 5 visits for each point within the Expansion Area. During all types of fixed-point count avian use surveys in the Project Area, 84 unique species were observed.

Eagles

Five bald eagles (*Haliaeetus leucocephalus*) in five separate groups were observed during the large bird use surveys conducted in the Project Area. All five eagles were observed flying within 800 m (2,625 ft) but only 1 eagle flew below 200 m, within the RSH, for a total of three eagle-minutes as defined within the ECPG. Of the five bald eagles recorded during large bird use surveys, three were observed within the South and Southern Expansion Areas (Figure 3). Two bald eagle observations in two groups were recorded incidentally or during the small bird use surveys (Table 1). All eagles detected within the Project Area during fixed-point count avian use surveys were observed either soaring or flying with one of these also observed perching.

Table 1. Eagle observations summary at the Big Blue River Wind Project from December 3, 2015 to November 29, 2016

Survey Type	Date	Survey Location	Species	Age	First Flight (m)	Lowest Flight (m)	Highest Flight (m)	Total min's	Risk min's
fixed point sb	4/6/16	7	BAEA	J	800	150	800	6	0
fixed point lb	1/18/16	27	BAEA	A	500	500	1000	1	0
fixed point lb	7/22/16	37	BAEA	I	400	400	1000	28	0
fixed point lb	10/26/16	40	BAEA	A	700	10	700	21	3
fixed point lb	5/3/16	7	BAEA	A	300	300	5000	7	0
fixed point lb	2/2/16	9	BAEA	A	500	500	800	4	0
incidental	3/4/16	see ¹	BAEA	J					
Total			7					67	3

BAEA = Bald eagle

¹16N644510e 4432001n;Near Summit Lake

Height = Ht; Minutes = min's; Large bird = lb; Small bird = sb

Juvenile = J, Adult = A, Immature = I

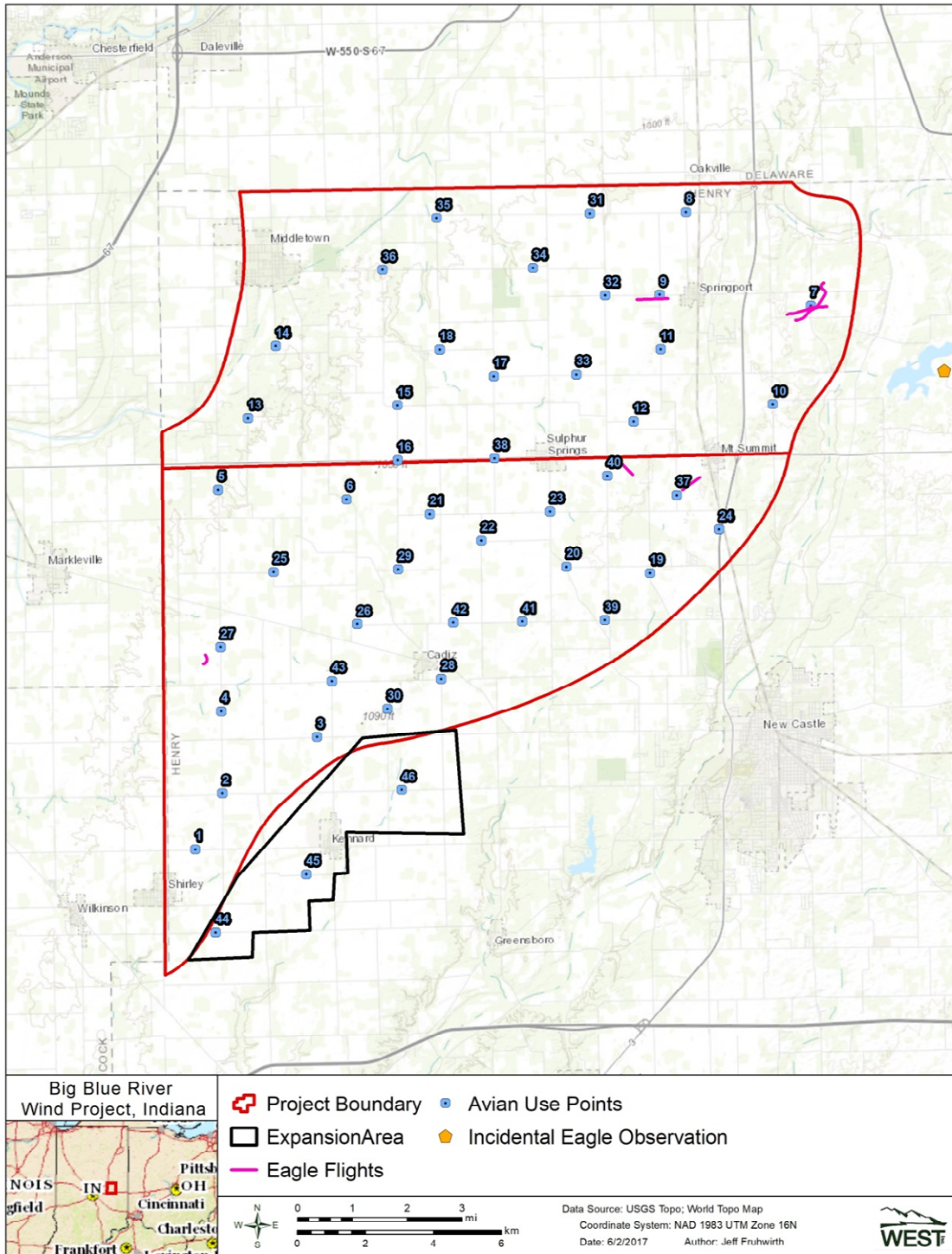


Figure 3. Project boundary and flight paths of eagles observed during fixed-point count avian use surveys conducted within the Big Blue River Wind Project, Henry County, Indiana from December 3, 2015 to November 29, 2016.

Small Bird Use Surveys

Bird Diversity and Abundance

A total of 6,116 bird observations were recorded within 2,255 separate groups belonging to 74 unique species of both small and large birds during the 10-minute small bird fixed-point count surveys in the Project Area (Appendix A). European starling (*Sturnus vulgaris*), red-winged blackbird (*Agelaius phoeniceus*) and horned lark (*Eremophila alpestris*) were the most abundant bird species observed during small bird fixed-point count surveys conducted in the Project Area (Appendix A).

Species Richness, Mean Use, and Seasonal Variation

Overall mean richness of small birds was 3.2 species/100-m plot/10-minute survey in the Project Area (Table 2). Small bird species richness varied seasonally, with summer having the highest richness (5 species of small birds/100-m plot/10-minute survey, followed by spring (3.5 species of small birds/100-m plot/10-minute survey), fall (2.1 species of small birds/100-m plot/10-minute survey), and winter (1.5 species of small birds/100-m plot/10-minute survey).

Table 2. Summary of species richness (species/100-meter plot/10-minute survey) of small birds and sample size during the fixed-point count small bird use surveys conducted in the Big River Wind Project from December 3, 2015 - November 29, 2016.

Season	# of Visits	Species Richness	# Surveys Conducted
Spring	2	3.5	86
Summer	4	5.0	178
Fall	3	2.1	138
Winter	3	1.5	129
Overall	12	3.2	531

For the Project Area, mean small bird use was highest in the fall (11.5 birds/100-m plot/10-minute survey), followed by summer (10.0 birds/100-m plot/10-minute survey), winter (8.4 birds/100-m plot/10-minute survey), and spring (6.0 birds/100-m plot/10-minute survey; Table 3).

Table 3. Mean bird use (number of birds/100-meter plot/10-minute survey), percent use, and frequency of occurrence (%) by season for small bird and large bird species by type and/or subtype during the small bird fixed-point count surveys conducted in the Big Blue River Wind Project from December 3, 2015 to November 29, 2016.

Bird Type	Mean Use				% Use				% Frequency			
	Spring	Summer	Fall	Winter	Spring	Summer	Fall	Winter	Spring	Summer	Fall	Winter
<i>Passerines</i>	5.14	8.63	10.4	6.78	86.3	86.5	90.1	80.9	93	97.8	79	65.9
American goldfinch	0.09	0.35	0.18	0.02	1.6	3.5	1.6	0.3	9.3	31.4	15.9	2.3
American redstart	0	<0.01	0	0	0	<0.1	0	0	0	0.6	0	0
American robin	0.71	0.65	0.28	0.16	11.9	6.5	2.4	1.8	45.3	47.3	12.3	9.3
American tree sparrow	0	0	<0.01	0.08	0	0	<0.1	0.9	0	0	0.7	0.8
Baltimore oriole	0	<0.01	0	0	0	<0.1	0	0	0	0.6	0	0
barn swallow	0.03	0.24	0.05	0	0.6	2.4	0.4	0	3.5	18.1	1.4	0
black-capped chickadee	0	<0.01	0	0	0	<0.1	0	0	0	0.6	0	0
black-throated blue warbler	0	0	<0.01	0	0	0	<0.1	0	0	0	0.7	0
blue jay	0.27	0.21	0.46	0.16	4.5	2.1	4	1.9	14	20.6	24.6	12.4
brown-headed cowbird	0.02	0.04	1.07	0	0.4	0.4	9.2	0	2.3	3.5	2.9	0
brown thrasher	0.02	0.04	0	0	0.4	0.4	0	0	2.3	4.1	0	0
Carolina chickadee	0.01	0.01	<0.01	0.03	0.2	0.1	<0.1	0.4	1.2	1.2	0.7	3.1
Carolina wren	0	<0.01	0.03	0	0	<0.1	0.3	0	0	0.6	2.9	0
cedar waxwing	0	0.03	0.07	0	0	0.3	0.6	0	0	2.9	0.7	0
chipping sparrow	0.06	0.25	0.04	0	1	2.5	0.4	0	5.8	23	1.4	0
common grackle	0.13	0.43	0.37	0	2.1	4.3	3.2	0	10.5	17.3	1.4	0
common yellowthroat	0	0.02	0	0	0	0.2	0	0	0	1.7	0	0
dickcissel	0.02	0.02	0	0	0.4	0.2	0	0	2.3	1.7	0	0
eastern bluebird	0.03	0.16	0.09	0.08	0.6	1.6	0.8	0.9	3.5	6.9	5.8	3.1
eastern kingbird	0	0.02	0	0	0	0.2	0	0	0	1.7	0	0
eastern meadowlark	0.15	0.15	0.02	0	2.5	1.5	0.2	0	12.8	8.6	0.7	0
eastern phoebe	0	<0.01	<0.01	0	0	<0.1	<0.1	0	0	0.6	0.7	0
eastern towhee	0	<0.01	0	0	0	<0.1	0	0	0	0.6	0	0
eastern wood-pewee	0	0.03	0	0	0	0.3	0	0	0	3.4	0	0
European starling	0.45	2.47	2.42	3.81	7.6	24.7	21	45.5	14	28.7	21	28.7
field sparrow	0.07	0.22	0	0	1.2	2.2	0	0	7	21.8	0	0
golden-crowned kinglet	0	<0.01	0	0	0	<0.1	0	0	0	0.6	0	0
grasshopper sparrow	0	0.01	0	0	0	0.1	0	0	0	1.2	0	0
gray catbird	0	0.04	0.03	0	0	0.4	0.3	0	0	4	2.2	0

Table 3. Mean bird use (number of birds/100-meter plot/10-minute survey), percent use, and frequency of occurrence (%) by season for small bird and large bird species by type and/or subtype during the small bird fixed-point count surveys conducted in the Big Blue River Wind Project from December 3, 2015 to November 29, 2016.

Bird Type	Mean Use				% Use				% Frequency			
	Spring	Summer	Fall	Winter	Spring	Summer	Fall	Winter	Spring	Summer	Fall	Winter
horned lark	0.98	0.5	0.86	1.67	16.4	5	7.4	19.9	58.1	40.9	37	33.3
house finch	0.01	0.02	0.02	0	0.2	0.2	0.2	0	1.2	1.7	2.2	0
house sparrow	0.07	0.23	0.22	0.41	1.2	2.3	1.9	4.9	7	17.7	6.5	3.1
house wren	0	0.05	0	0	0	0.5	0	0	0	4.1	0	0
indigo bunting	0	0.19	0	0	0	1.9	0	0	0	17.6	0	0
Lapland longspur	0	0	0	0.02	0	0	0	0.2	0	0	0	0.8
northern cardinal	0.28	0.17	0.03	0.08	4.7	1.7	0.3	0.9	27.9	16.6	1.4	7
northern mockingbird	0.02	0.02	0	0	0.4	0.2	0	0	2.3	2.3	0	0
northern rough-winged swallow	0	0.02	0	0	0	0.2	0	0	0	0.6	0	0
palm warbler	0	0.01	0.02	0	0	0.1	0.2	0	0	1.1	1.4	0
red-eyed vireo	0	0.02	0	0	0	0.2	0	0	0	1.7	0	0
red-winged blackbird	1.23	1.34	1.36	0.09	20.7	13.4	11.8	1.1	52.3	47.6	14.5	3.1
Savannah sparrow	0.02	0.03	<0.01	0	0.4	0.3	<0.1	0	2.3	3.5	0.7	0
song sparrow	0.24	0.38	0.06	0.02	4.1	3.9	0.5	0.3	24.4	37.3	2.9	1.6
tufted titmouse	0.1	0.11	0.01	0.04	1.8	1.1	0.1	0.5	10.5	11	1.4	3.9
unidentified blackbird	0	0	2.54	0	0	0	22	0	0	0	2.2	0
unidentified bluebird	0	<0.01	0	0	0	<0.1	0	0	0	0.6	0	0
unidentified flycatcher	0	<0.01	0	0	0	<0.1	0	0	0	0.6	0	0
unidentified sparrow	0.02	0.02	0	0.03	0.4	0.2	0	0.4	2.3	1.1	0	1.6
unidentified swallow	0.02	<0.01	0.11	0	0.4	<0.1	0.9	0	1.2	0.5	1.4	0
unidentified warbler	0	<0.01	<0.01	0	0	<0.1	<0.1	0	0	0.6	0.7	0
vesper sparrow	0.01	0.01	0	0	0.2	0.1	0	0	1.2	1.2	0	0
warbling vireo	0	0.02	0	0	0	0.2	0	0	0	2.3	0	0
white-breasted nuthatch	0.03	0.02	0.01	0.09	0.6	0.2	0.1	1	3.5	1.7	1.4	8.5
wood thrush	0	0.01	0	0	0	0.1	0	0	0	1.2	0	0
<i>Cuckoos</i>	0	0.02	0	0	0	0.2	0	0	0	1.7	0	0
yellow-billed cuckoo	0	0.02	0	0	0	0.2	0	0	0	1.7	0	0
<i>Swifts/Hummingbirds</i>	0	0.04	0.02	0	0	0.4	0.2	0	0	2.8	0.7	0
chimney swift	0	0.04	0.02	0	0	0.4	0.2	0	0	2.8	0.7	0
<i>Woodpeckers</i>	0.2	0.12	0.12	0.16	3.3	1.2	1.1	1.9	19.8	10.5	10.9	14

Table 3. Mean bird use (number of birds/100-meter plot/10-minute survey), percent use, and frequency of occurrence (%) by season for small bird and large bird species by type and/or subtype during the small bird fixed-point count surveys conducted in the Big Blue River Wind Project from December 3, 2015 to November 29, 2016.

Bird Type	Mean Use				% Use				% Frequency			
	Spring	Summer	Fall	Winter	Spring	Summer	Fall	Winter	Spring	Summer	Fall	Winter
downy woodpecker	0	<0.01	0.03	<0.01	0	<0.1	0.3	<0.1	0	0.6	2.9	0.8
northern flicker	0.01	0.04	0.07	0.03	0.2	0.4	0.6	0.4	1.2	4.1	6.5	3.1
pileated woodpecker	0.02	0.01	<0.01	0.03	0.4	0.1	<0.1	0.4	2.3	1.2	0.7	3.1
red-bellied woodpecker	0.08	0.03	0.02	0.06	1.4	0.3	0.2	0.7	8.1	3.5	2.2	6.2
red-headed woodpecker	0.02	0.02	0	<0.01	0.4	0.2	0	<0.1	2.3	1.7	0	0.8
unidentified woodpecker	0.06	<0.01	0	0.02	1	<0.1	0	0.3	5.8	0.6	0	2.3
<i>Kingfishers</i>	0	0.01	0.02	<0.01	0	0.1	0.2	<0.1	0	1.2	1.4	0.8
belted kingfisher	0	0.01	0.02	<0.01	0	0.1	0.2	<0.1	0	1.2	1.4	0.8
<i>Unidentified Birds</i>	0.62	1.15	0.97	1.43	10.4	11.6	8.4	17.1	3.5	14.1	23.2	14.7
unidentified bird (medium)	0	0	0	0.02	0	0	0	0.3	0	0	0	0.8
unidentified bird (small)	0.62	1.15	0.97	1.41	10.4	11.6	8.4	16.8	3.5	14.1	23.2	14
Small Birds Overall	6.0	10.0	11.5	8.4	100	100	100	100				

Large Bird Use Surveys

Bird Diversity and Abundance

A total of 3,067 bird observations were recorded within 948 separate groups belonging to 30 unique species of birds during the 60-minute large bird fixed-point count surveys in the Project Area (Appendix B).

Canada geese (*Branta canadensis*; 91 observations of 859 individuals) and turkey vulture (*Cathartes aura*; 267 observations of 515 individuals) were the most abundant birds observed during surveys in the Project Area. Turkey vulture and red-tailed hawk (*Buteo jamaicensis*; 186 observations of 216 individuals) were the most frequently observed large birds in the Project Area (Appendix B).

Species Richness, Mean Use, and Seasonal Variation

Mean large bird species richness was 1.34 species/800-m plot/60-minute surveys in the Project Area (Table 4). Large bird species richness varied seasonally, with spring having the highest richness (1.77 species of large birds/800-m plot/60-minute survey), followed by winter (1.33 species of large birds/800-m plot/60-minute survey), summer (1.28 species of large birds/800-m plot/60-minute survey), and fall (1.14 species of large birds/800-m plot/60-minute survey).

Table 4. Summary of large bird species richness (species/800-meter plot/60-minute survey) and sample size during large bird fixed-point count surveys conducted in the Big Blue River Wind Project from December 3, 2015 to November 29, 2016.

Season	# of Visits	Large Bird Species Richness	# Surveys Conducted
Spring	2	1.77	86
Summer	4	1.28	178
Fall	3	1.14	138
Winter	3	1.33	129
Overall	12	1.34	531

In the Project Area, mean large bird use was highest in the winter (12.9 birds/800-m plot/60-minute survey), followed by spring (4.3 birds/800-m plot/60-minute survey), fall (4.2 birds/800-m plot/60-minute survey), and summer (2.6 birds/800-m plot/60-minute survey; Table 5). Canada geese comprised the majority of winter large bird use.

Table 5. Mean bird use (number of birds/800-meter plot/60-minute survey), percent use, and frequency of occurrence (%) by season for all large birds by type and/or subtype during large bird fixed-point count surveys conducted in the Big Blue River Wind Project from December 3, 2015 to November 29, 2016.

Bird Species	Mean Use				% Use				% Frequency			
	Spring	Summer	Fall	Winter	Spring	Summer	Fall	Winter	Spring	Summer	Fall	Winter
Waterbirds	0.33	0.31	0.03	1.27	7.6	11.8	0.7	9.9	16.3	20.9	2.2	3.9
Waterfowl	1.72	0.52	1.43	10.09	40.3	20.1	33.8	78.4	31.4	9.3	2.9	24
Shorebirds	0	0	<0.01	0	0	0	0.2	0	0	0	0.7	0
Diurnal Raptors	1.03	0.73	0.8	1.39	24.3	28.1	19	10.8	54.7	45.7	45.7	65.9
Accipiters	0.09	0.05	0.07	0.07	2.2	2	1.5	0.5	8.1	5.2	6.5	7
Buteos	0.7	0.42	0.32	0.69	16.3	16.1	7.5	5.4	40.7	26.3	23.2	41.9
Northern Harrier	0.02	<0.01	0.1	0.09	0.5	0.2	2.4	0.7	2.3	0.5	8.7	6.2
Eagles	0	0.01	<0.01	0.02	0	0.4	0.2	0.1	0	1.2	0.7	1.6
Falcons	0.1	0.14	0.22	0.14	2.5	5.4	5.3	1.1	8.1	11.8	15.9	10.9
Osprey	0	<0.01	0	0	0	0.2	0	0	0	0.5	0	0
Other Raptors	0.12	0.1	0.09	0.39	2.7	3.7	2.1	3	8.1	8	5.1	24.8
Vultures	1.19	1.01	1.68	0.02	27.8	38.8	39.8	0.2	48.8	38.3	42	2.3
Upland Game Birds	0	0.03	<0.01	0	0	1.1	0.2	0	0	2.9	0.7	0
Doves/Pigeons	0	0	0.08	0	0	0	1.9	0	0	0	1.4	0
Large Corvids	0	0	0.19	0.1	0	0	4.5	0.8	0	0	1.4	1.6
Large Bird Overall	4.3	2.6	4.2	12.9	100	100	100	100				

Flight Height and Behavior

Approximately 38.6% of diurnal raptors were initially observed flying within the RSH, 29.4% were observed flying below the RSH, and 32% were observed flying above the RSH during the 60-minute fixed-point count avian use survey (Table 5). Apart from a single osprey (*Pandion haliaetus*) flying within the RSH (100%), doves and pigeons (72.7%) and accipiters (61.5%) had the highest percentage of observations recorded within RSH in the Project Area. Five eagles in five separate groups were observed flying during fixed-point count avian use surveys in the Project Area (Table 6). Values in this table reflect initial observations. All initial observations of eagles occurred at heights greater than 150 m; one eagle later flew under 200 m flight height.

Table 6. Flight height characteristics of large birds by bird type and raptor subtype during the 60-minute fixed-point count avian use survey^a conducted in the Big Blue River Wind Project from December 3, 2015, to November 29, 2016.

Bird Type	# Groups Flying	# Obs Flying	Mean Flight Height (m)	% ObsFlying	% within Flight Height Categories		
					0 - 25 m	25 - 150 m ^b	> 150 m
Waterbirds	70	246	153.79	98.8	2	27.2	70.7
Waterfowl	126	1641	144.83	94.5	4.7	50.9	44.4
Shorebirds	1	1	1	100	100	0	0
Diurnal Raptors	295	347	176.34	68.4	29.4	38.6	32
Accipiters	26	26	80.54	74.3	23.1	61.5	15.4
Buteos	149	184	205.46	69.2	20.1	42.4	37.5
Northern Harrier	27	28	16.22	100	82.1	17.9	0
Eagles	5	5	480	100	0	0	100
Falcons	34	39	31.85	47	61.5	35.9	2.6
Osprey	1	1	50	100	0	100	0
Other Raptors	53	64	289.49	71.9	18.8	31.2	50
Vultures	262	504	245.41	98.2	4.8	47	48.2
Upland Game Birds	0	0	0	0	0	0	0
Doves/Pigeons	2	11	21.5	100	27.3	72.7	0
Large Corvids	5	27	28	69.2	85.2	14.8	0
Large Bird Overall	761	2,777	191.2	90.7	8.5	46.3	45.3

^a 800-meter radius plot for large birds.

^b The likely RSH for potential collision with a turbine blade, or 25 – 150 m (82 – 492 ft) above ground level.

Note: groups (grps); observations (obs)

Spatial Use and Mapping

Overall bird use varied by location. In the Project Area, bird use was highest at point 37 (51 birds/60-minute survey), followed by points 1, 19, and 22 (14.7, 13.3, and 13 birds/60-minute survey, respectively; Table 7). The higher use estimates at these points were comprised of waterfowl and waterbird observations during the winter season. Raptor use during the fixed-point count avian use surveys was relatively low at all point locations in the Project Area. Eagle use was also low, with eagles being observed at only five points (0.1 eagle use/60-minute survey for points 7, 9, 27, 37, and 40; Table 7), three of the five observations were recorded in the northeast corner of the Project area, closest to Summit Lake State Park and other small bodies of water (Figure 3).

Table 7. Mean use (number of birds/60-minute survey) by point for large birds observed during large bird fixed-point count avian use surveys conducted in the Big Blue River Wind Project from December 3, 2015 to November 29, 2016.

Bird Type	Survey Points (1-22)																					
	1	2	3	4	5	6	7	8	9	10	11	12	13	14	15	16	17	18	19	20	21	22
Waterbirds	8.3	0.2	0.1	0.2	0.1	0.2	0.3	0.3	0.2	0.1	0.6	0.2	0.2	0	0.2	0.3	0.2	0.3	0.8	0.17	0.1	0.1
Waterfowl	4.2	5.0	0	6.7	0.2	2.9	2.8	1.7	4.2	9.8	0	0.6	1.6	0.3	0.1	0.2	0.0	0.5	9.8	0	0.4	8.6
Shorebirds	0.1	0	0	0	0	0	0	0	0	0	0	0	0	0	0	0	0	0	0	0	0	0
Diurnal Raptors	0.8	0.8	0.8	1.2	1.4	1.3	0.3	1.1	2.5	0.8	1.3	1.3	0.8	0.4	1.2	0.9	0.9	0.6	0.8	0.4	1.8	0.5
Accipiters	0	0	0	0	0	0.1	0.1	0.1	0.2	0.2	0	0.1	0.4	0	0.1	0.1	0.1	0.2	0	0	0	0.1
Buteos	0.8	0.3	0.5	0.8	1.2	0.4	0	0.5	1.4	0.6	0.7	1	0.2	0.4	0.4	0.6	0.2	0.2	0.3	0.4	0.8	0.2
Northern Harrier	0	0	0	0	0	0	0.1	0	0.1	0	0	0.1	0	0	0.3	0	0.1	0.1	0.3	0	0.1	0.2
Eagles	0	0	0	0	0	0	0.1	0	0.1	0	0	0	0	0	0	0	0	0	0	0	0	0
Falcons	0	0	0.1	0.3	0	0.7	0	0	0.2	0	0.4	0.1	0	0	0.1	0.1	0.1	0.1	0.1	0	0.8	0.1
Osprey	0	0	0	0	0	0	0	0	0	0	0	0	0.1	0	0	0	0	0.0	0	0	0	0
Other Raptors	0.1	0.5	0.3	0	0.3	0.1	0.1	0.5	0.6	0.1	0.3	0.1	0.1	0	0.3	0.2	0.5	0.1	0.2	0	0.2	0
Vultures	0.4	0.9	0.3	1	1.4	1.0	1.8	1.3	1.5	1.3	0.7	0.8	1	1.2	1	0.5	1.2	0.7	1.9	1.4	1	3.8
Upland Game																						
Birds	0	0	0.1	0	0	0.1	0	0	0	0	0	0	0	0	0	0	0	0	0	0	0	0
Doves/Pigeons	0	0	0.7	0	0.3	0	0	0	0	0	0	0	0	0	0	0	0	0	0	0	0	0
Large Corvids	0.8	0.8	0	0.3	0	0	0	0	1.4	0	0	0	0	0	0	0	0	0	0	0	0	0
Bird Overall	14.7	7.7	1.9	9.3	3.3	5.4	5.2	4.3	9.8	12.0	2.6	2.9	3.5	1.9	2.4	1.8	2.3	2.1	13.3	2	3.3	13

Table 7, continued. Mean use (number of birds/60-minute survey) by point for large birds observed during large bird fixed-point count avian use surveys conducted in the Big Blue River Wind Project from December 3, 2015 to November 29, 2016.

Bird Type	Survey Points (23-46)																							
	23	24	25	26	27	28	29	30	31	32	33	34	35	36	37	38	39	40	41	42	43	44	45	46
Waterbirds	0	0	0	0.5	0.1	0	0.8	0	0	0	1.8	0.3	0.2	0	0.1	0.3	0.8	2.6	0.2	0.3	0.1	0	0.3	0.3
Waterfowl	0.2	7.2	2.7	0	0.7	0	0.3	0	0.5	0	4.2	0.2	0.8	1	49.3	8.8	2.8	7	0	0	0	0	0	0
Shorebirds	0	0	0	0	0	0	0	0	0	0	0	0	0	0	0	0	0	0	0	0	0	0	0	0
Diurnal Raptors	0.8	0.8	0.8	0.7	0.7	1	0.9	1.3	0.7	1	0.8	2.6	0.9	0.5	0.8	0.7	0.8	1.4	0.3	0.7	0.8	1	2.5	0.3
Accipiters	0	0	0	0.2	0	0.2	0	0.1	0.1	0	0.2	0.1	0.3	0	0.1	0	0.2	0	0	0.1	0	0	0	0
Buteos	0.8	0.8	0.3	0.3	0.3	0.3	0.7	0.6	0.3	0.4	0.5	0.8	0.5	0.3	0.6	0.4	0.4	0.9	0.1	0.3	0.5	0	1.3	0
Northern Harrier	0	0	0.2	0	0	0.1	0.1	0.1	0	0	0	0.4	0	0	0.1	0	0	0.1	0.1	0	0.1	0	0	0
Eagles	0	0	0	0	0.1	0	0	0	0	0	0	0	0	0	0.1	0	0	0.1	0	0	0	0	0	0
Falcons	0	0	0.4	0.1	0.1	0.4	0.1	0.4	0.2	0.2	0.1	0.5	0.1	0.1	0	0.1	0.1	0	0.1	0.2	0.1	1	1	0.3
Osprey	0	0	0	0	0	0	0	0	0	0	0	0	0	0	0	0	0	0	0	0	0	0	0	0
Other Raptors	0	0.1	0	0.1	0.2	0.1	0.1	0.2	0.1	0.4	0.1	0.8	0.1	0.1	0	0.2	0.1	0.3	0.1	0.1	0.1	0	0.3	0
Vultures	1.1	0.5	1	0.8	0.6	0.3	0.4	0.3	0.8	2.3	0.6	0.9	0.9	0.5	0.8	1	0.8	0.4	1.8	0.8	0	0.5	0.3	0
Upland Game Birds	0	0	0	0	0	0.1	0	0.1	0	0	0	0	0.1	0	0.1	0	0	0	0	0	0	0	0	0
Doves/Pigeons	0	0	0	0	0	0	0	0	0	0	0	0	0	0	0	0	0	0	0	0	0	0	0	0
Large Corvids	0	0	0	0	0	0	0	0	0	0	0	0	0	0	0	0	0	0	0	0	0	0	0	0
Bird Overall	2.1	8.5	4.5	1.9	2	1.4	2.5	1.7	2	3.3	7.3	3.9	2.8	2	51	10.7	5.2	11.4	2.3	1.7	0.8	1.5	3	0.5

Sensitive Species Observations

Seven sensitive species totaling 441 observations in 62 groups were recorded during the fixed-point count avian use surveys (Table 8); sandhill cranes were the most numerous sensitive species (*Grus canadensis*; Appendix B).

Northern harriers (*Circus cyaneus*) were the second-most commonly observed sensitive species at the Project Area for a total of 33 individuals in 32 separate observations. Most northern harriers were observed in the fall and winter and were likely seasonal migrants. Red-shouldered hawk (*Buteo lineatus*) observations were most common near survey points 21 and 29 in the Project Area (Figure 4) and in the fall (Appendix B). The rest of the sensitive species were observed infrequently at the Project Area and flight paths of these species do not show any concentrated use or habitat use pattern (Figure 4).

Table 8. Summary of sensitive species observed incidentally or during fixed-point (FP) count avian use surveys conducted in the Big Blue River Wind Project from December 3, 2015 to November 29, 2016.

Species	Scientific Name	Status ^a	Large Bird		Small Bird		Incidental		Total	
			FP	FP	FP	FP	Incidental	Incidental	Total	Total
			# of grps	# of obs	# of grps	# of obs	# of grps	# of obs	# of grps	# of obs
bald eagle	<i>Haliaeetus leucocephalus</i>	SC	5	5	1	1	1	1	7	7
common nighthawk	<i>Chordeiles minor</i>	SC	0	0	0	0	1	1	1	1
northern harrier	<i>Circus cyaneus</i>	SE	27	28	3	3	2	2	32	33
osprey	<i>Pandion haliaetus</i>	SE	1	1	0	0	0	0	1	1
red-shouldered hawk	<i>Buteo lineatus</i>	SC	4	5	1	1	4	4	9	10
sandhill crane	<i>Grus canadensis</i>	SC	6	164	0	0	1	220	7	384
sharp-shinned hawk	<i>Accipiter striatus</i>	SC	5	5	0	0	0	0	5	5
Total	7 species		48	208	5	5	9	228	62	441

^a SE = state endangered , SC=state species of concern (IDNR 2016)
Groups (grps); observations (obs)

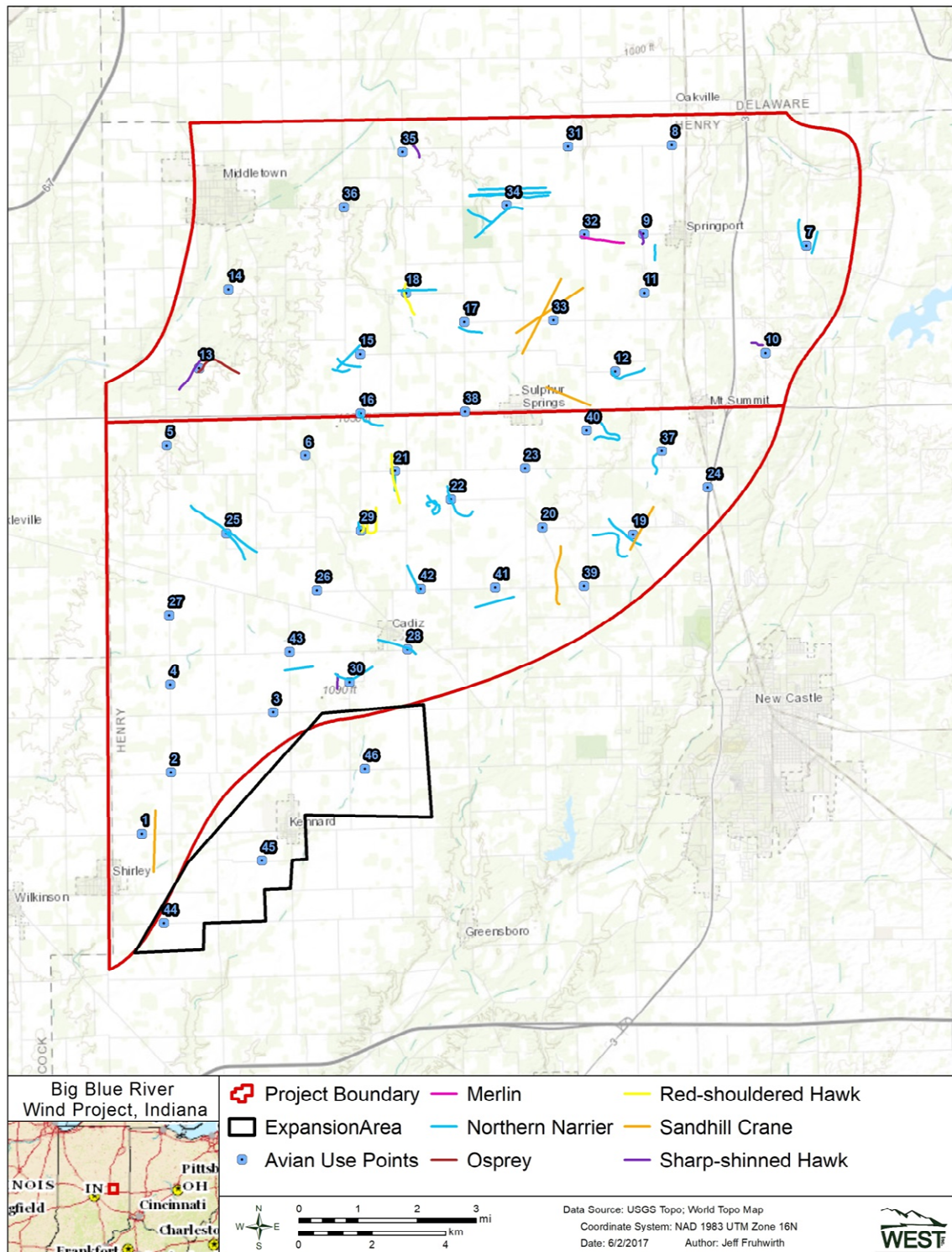


Figure 4. Flight paths of sensitive species observed during fixed-point count avian use surveys conducted within the Big Blue River Wind Project, Henry County, Indiana from December 3 to November 29, 2016.

Incidental Observations

Five bird species were observed incidentally in the Project Area, totaling 228 individuals within 9 separate groups (Table 9). Common nighthawk (*Chordeiles minor*), a state species of special concern, was only seen incidentally within the Project Area.

Table 9. Incidental wildlife recorded while conducting all surveys at the Big Blue River Wind Project from December 3, 2015 to November 29, 2016.

Species	Scientific Name	# grps	# obs
sandhill crane	<i>Grus canadensis</i>	1	220
bald eagle	<i>Haliaeetus leucocephalus</i>	1	1
northern harrier	<i>Circus cyaneus</i>	2	2
red-shouldered hawk	<i>Buteo lineatus</i>	4	4
common nighthawk	<i>Chordeiles minor</i>	1	1
Bird Subtotal		9	228

Raptor Nest Survey

No eagle and 55 raptor nests were observed within the 3.2 km (2-mi) survey area (Table 10; Figure 5). All nests observed were small, and less than 4 ft (1.22 m) in diameter and located along woodlot edges. USFWS provided information that three eagle nests occur 8 – 10 mi (12.87 – 16.01 km) from the Project Area boundary. Sixteen active raptor nests were observed, while 39 were inactive. Fourteen of the active raptor nests were occupied by red-tailed hawks, and the remaining two were occupied by great-horned owls.

Table 10. Summary of nests located within the Big Blue River Wind Project and a 2-mile buffer, Henry county, Indiana from March 2 to March 15, 2016

NEST ID ¹	Species ²	Nest Status	Nest Type	Nest Condition	Nest Height (~ft)	Substrate Height	Nest Aspect	UTM NAD83	
								Easting	Northing
RN1	Unknown	Inactive	Small Stick	Intact	30	-	S	614239	4439582
RN2	Unknown	Inactive	Small Stick	Intact	30	-	S	643396	4438922
RN3	RTHA	Active	Medium Stick	Intact	25	25	S	629262	4440337
RN4	Unknown	Inactive	Small Stick	Intact	30	30	W	626993	4440524
RN5	Unknown	Inactive	Small Stick	Intact	25	25	W	625713	4440506
RN6	RTHA	Active	Medium Stick	Intact	18	18	E	620974	4438974
RN7	RTHA	Active	Medium Stick	Intact	30	30	N	621941	4436509
RN8	Unknown	Inactive	Small Stick	Intact	30	30	W	623723	4437176
RN9	Unknown	Inactive	Small Stick	Intact	20	20	W	632083	4439181
RN10	Unknown	Inactive	Small Stick	Intact	30	20	W	628183	4435529
RN11	Unknown	Inactive	Small Stick	Intact	15	15	W	635561	4436315
RN12	Unknown	Inactive	Small Stick	Intact	20	-	E	638141	4436872
RN13	Unknown	Inactive	Small Stick	Intact	25	25	E	644082	4438221
RN14	Unknown	Inactive	Small Stick	Intact	20	20	S	644468	4434315
RN15	GHOW	Active	Medium Stick	Intact	20	20	N	644021	4433276
RN16	Unknown	Inactive	Small Stick	Intact	25	25	N	642192	4430869
RN17	Unknown	Inactive	Small Stick	Intact	25	25	N	643737	4430344
RN18	Unknown	Inactive	Small Stick	Intact	20	30	W	640806	4436879
RN19	Unknown	Inactive	Small Stick	Intact	15	30	N	641577	4435945
RN20	Unknown	Inactive	Small Stick	Intact	20	35	N	642602	4433930
RN21	RTHA	Active	Medium Stick	Intact	30	40	W	643999	4435279
RN22	Unknown	Inactive	Small Stick	Intact	25	25	S	641966	4433978
RN23	Unknown	Inactive	Small Stick	Intact	15	20	W	639612	4435160
RN24	GHOW	Active	Medium Stick	Intact	20	25	N	639292	4433628
RN25	Unknown	Inactive	Small Stick	Intact	20	25	S	640503	4429594
RN26	RTHA	Active	Medium Stick	Intact	25	30	S	636442	4437141
RN27	Unknown	Inactive	Small Stick	Intact	25	30	N	630016	4431779
RN28	RTHA	Active	Medium Stick	Intact	20	30	N	628914	4428104
RN29	RTHA	Active	Medium Stick	Intact	25	30	N	633377	4427266
RN30	Unknown	Inactive	Small Stick	Intact	25	30	N	630715	4427417
RN31	RTHA	Active	Medium Stick	Intact	25	30	E	622752	4428399
RN32	Unknown	Inactive	Small Stick	Intact	20	25	E	622736	4428341
RN33	Unknown	Inactive	Small Stick	Intact	20	25	N	622402	4423536

Table 10. Summary of nests located within the Big Blue River Wind Project and a 2-mile buffer, Henry county, Indiana from March 2 to March 15, 2016

NEST ID ¹	Species ²	Nest Status	Nest Type	Nest Condition	Nest Height (~ft)	Substrate Height	Nest Aspect	UTM NAD83	
								Easting	Northing
RN34	Unknown	Inactive	Small Stick	Intact	30	32	N	623568	4422156
RN35	RTHA	Active	Medium Stick	Intact	12	15	E	629751	4422985
RN36	Unknown	Inactive	Small Stick	Intact	25	30	N	622739	4425580
RN37	Unknown	Inactive	Small Stick	Intact	20	25	W	621632	4428656
RN38	RTHA	Active	Medium Stick	Intact	25	30	E	629369	4426798
RN39	RTHA	Active	Medium Stick	Intact	20	25	W	633158	4424041
RN40	Unknown	Inactive	Small Stick	Intact	32	35	N	635328	4425599
RN41	RTHA	Active	Medium Stick	Intact	25	30	N	634064	4424082
RN42	Unknown	Inactive	Small Stick	Intact	25	30	W	622257	4425513
RN43	Unknown	Inactive	Small Stick	Intact	20	25	E	621517	4429552
RN44	Unknown	Inactive	Small Stick	Intact	10	15	S	622428	4430630
SRN1	Unknown	Inactive	Small Stick	Intact	20	20	S	624296	4413050
SRN2	Unknown	Inactive	Small Stick	Intact	20	20	S	624296	4413050
SRN3	RTHA	ACTIVE	Medium Stick	Intact	20	20	N	630033	4419011
SRN4	Unknown	Inactive	Small Stick	Intact	20	20	N	629957	4418987
SRN5	Unknown	Inactive	Small Stick	Intact	20	20	N	637870	4422248
SRN6	RTHA	Active	Medium Stick	Intact	15	15	N	637841	4422090
SRN7	Unknown	Inactive	Small Stick	Intact	10	10	N	628750	4418816
SRN8	Unknown	Inactive	Small Stick	Intact	15	15	N	619529	4417016
SRN9	Unknown	Inactive	Small Stick	Intact	20	20	N	623774	4418325
SRN10	Unknown	Inactive	Small Stick	Intact	20	20	N	622561	4418667
SRN11	Unknown	Inactive	Small Stick	Intact	20	20	E	620797	4414041

¹ Defined by WEST.

² RTHA= red-tailed hawk; GHOW= great horned owl

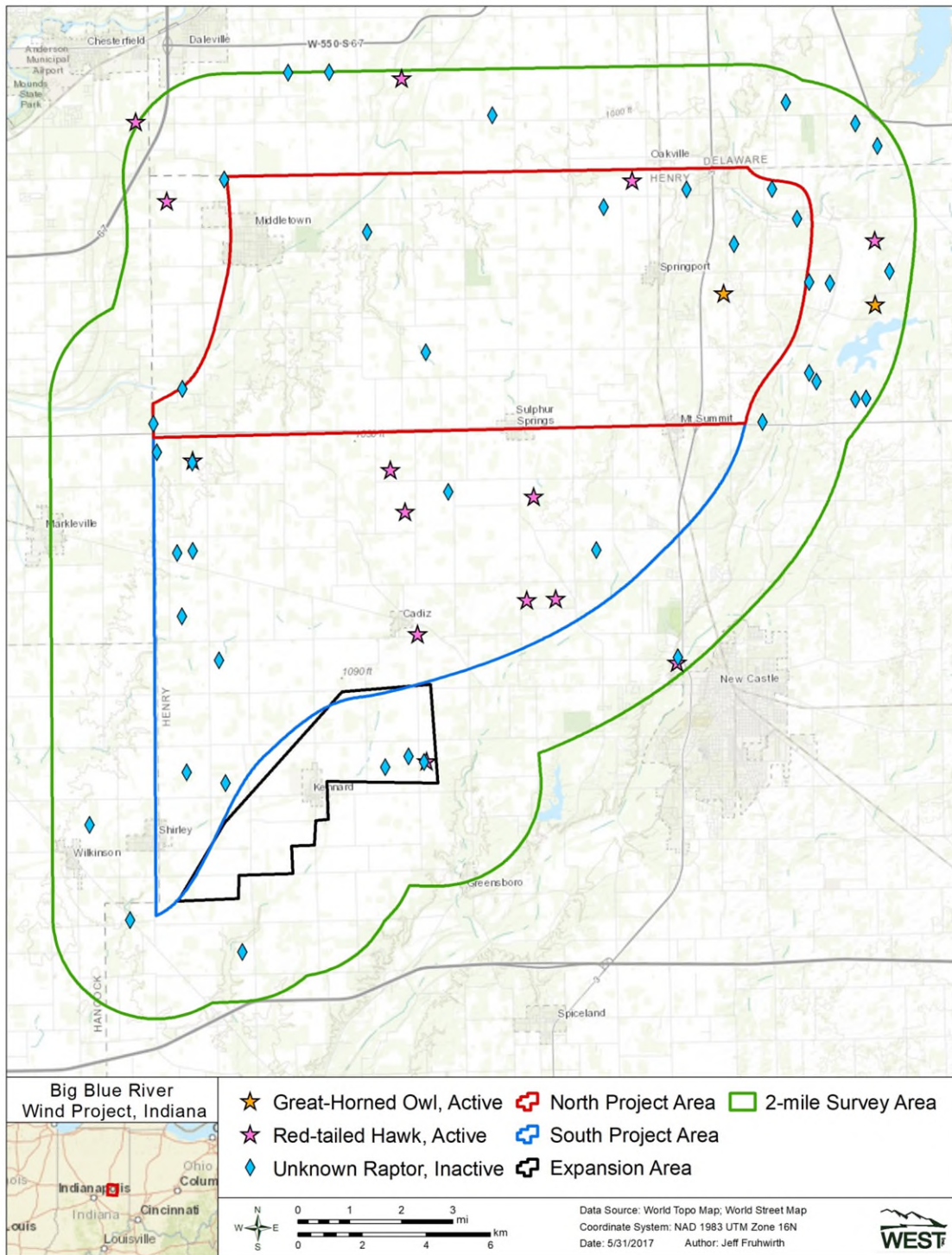


Figure 5. Raptor nest locations in the Big Blue River Wind Project, Henry County, Indiana during ground-based surveys from March 2 to March 15, 2016.

DISCUSSION

The primary objective of the avian use surveys was to estimate potential impacts of the project to eagles. A secondary objective was to estimate impacts to other bird species

Eagles

The Project Area lacks suitable bald eagle nesting and hunting habitat throughout most of the development area, and low levels of eagle use were recorded in cropland areas that comprise the majority of the Project Area. Areas outside of the Project Area, such as Summit Lake State Park (less than 2 mi [3.2 km] northeast of the Project Area) and the Province Pond Fish and Wildlife Area, a small lake and wetland located in the northeast portion of the Project Area, provide more suitable nesting and foraging areas for bald eagles.

Bald eagle collisions with wind turbines are relatively rare compared to the golden eagle (*Aquila chrysaetos*). To date, the USFWS has confirmed 49 bald eagles as mortalities at wind energy projects (USFWS 2018) with an additional six reported by Pagel et al. (2013). As of 2016, over 52,000 wind turbines were operating within the United States, with a total installed wind capacity of 82,183 mw (AWEA 2017). The low level of bald eagle mortality relative to the large number of operating turbines suggests that the risk for collision of bald eagles with wind turbines is low considering the species' large and increasing population and widespread distribution across North America (Buehler 2000, Allison 2012). The combination of a low level of recorded bald eagle use, and a lack of highly suitable habitat throughout the majority of the Project area that would attract bald eagles within the Project Area suggests the risk of bald eagle collision is low.

No golden eagles were recorded during the survey. Golden eagles are rare in the Midwest and eastern US. Golden eagles are most commonly found in the western U.S. To date no golden eagle fatalities have been reported within the eastern U.S. Golden eagles have a wide range of winter distribution (USFWS 2011, 2016a), and are recorded in low numbers within Indiana. During the last 10 years, three golden eagle observations were reported on eBird near Muncie, Indiana (eBird 2016); two of these observations were within the last year, one at Summit Lake State Park and one at Prairie Creek Reservoir. No golden eagles were observed within the Project Area during 619 hours of fixed-point count avian use surveys. In addition, golden eagle habitat is rare within the Project Area, as they prefer open shrublands and grasslands (USFWS 2011, 2016b). Golden eagle fatalities are not expected to occur at the Project Area based on the lack of use and the location of the Project Area outside of the core range of the golden eagle.

Passerines

Most of the passerines observed during the fixed-point count avian use surveys were common species that are typical of tilled agricultural fields and grasslands in the Midwest (Appendices A and B), suggesting that songbird mortality will be similar to fatality rates recorded at other Midwest wind energy projects. No federally or state-listed small bird species were observed in

the Project Area. Erickson et al. (2014) completed an analysis of passerine mortality at 116 wind-energy facilities in the US and Canada. After accounting for imperfect detection and loss of carcasses due to scavenging, Erickson compared fatality rates for individual bird species to species population sizes in North America. For all wind energy facilities currently in operation, Erickson et al. (2014) estimated that about 134,000 to 230,000 small passerine fatalities from collision with wind turbines occur annually, or 2.10 to 3.35 small birds per megawatt (MW) of installed capacity. When adjusted for species composition, this indicates that about 368,000 fatalities for all bird species are caused annually by collisions with wind turbines. Other human-related sources of bird deaths, (e.g., communication towers, buildings, and domestic cats [*Felis catus*]) have been estimated to kill millions to billions of birds each year. Loss et al. (2013) estimated a similar number of wind related bird mortality in the U.S., between 140,000 – 328,000 annually.

Large Birds

The most abundant large bird species recorded during avian use surveys were waterfowl such as Canada geese. Waterfowl were most commonly observed in the fall and winter and were likely associated with migration. Waterfowl do not appear to be particularly susceptible to collision with wind turbines. In an analysis of 116 studies of bird mortality at over 70 facilities, waterfowl made up 2.7% of 4,975 fatalities found (Erickson et al. 2014). In a database of 208 publicly available fatality studies, 207 waterfowl fatalities out of 7,993 total fatalities (2.58%) were documented, (see Appendix D for a list of facilities and references).

Canada goose appears to be especially adept at avoiding collisions with wind turbines. In the Midwest, the Top of Iowa Windfarm is located in cropland between three Wildlife Management Areas (WMAs) with historically high bird use, including migrant and resident waterfowl, shorebirds, raptors, and songbirds. Approximately one million total goose-use days and 120,000 total duck-use days were recorded in the WMAs during the fall and early winter, and no waterfowl fatalities were documented during concurrent and standardized wind project fatality studies (Jain 2005). Similar findings were observed at the Buffalo Ridge Wind Project in southwestern Minnesota and the Grand Ridge Wind Project in northern Illinois. Buffalo Ridge is located in an area with relatively high waterfowl use, as well as other waterbird use and some shorebird use. Five of the 42 fatalities observed during the fatality studies were waterfowl, including two mallards (*Anas platyrhynchos*), two American coots (*Fulica americana*), and one blue-winged teal (*A. discors*; Johnson et al. 2002b). Additionally, at the Grand Ridge Wind Project waterfowl accounted for 27% of all birds observed in a year-long avian point count survey, but only one waterfowl fatality was found (Derby et al. 2010g)

Diurnal Raptors

Annual mean raptor use (within the first 20 minutes of 60-minute surveys) recorded in the Project Area (0.41 raptors/800-m plot/20-minute survey) was low compared with 46 other publicly available wind energy facilities that implemented similar protocols and had data for three or four seasons (Figure 6). The annual mean raptor use at these wind energy facilities ranged from 0.06 to 2.34 raptors/800-m plot/20-minute survey (Figure 6). A relative ranking of

annual mean raptor use was developed based on the results from these wind energy facilities as low (0 – 0.5 raptors/800-m plot/20-minute survey), low to moderate (0.5 – 1.0 raptors/800-m plot/20-minute survey), moderate (1.0 – 2.0 raptors/800-m plot/20-minute survey), high (2.0 – 3.0 raptors/800-m plot/20-minute survey), and very high (more than 3.0 raptors/800-m plot/20-minute survey). Under this ranking, annual mean diurnal raptor use in the Project Area is considered to be low.

Raptor fatality rates in the Midwest have ranged from zero to 0.47 raptor fatalities per megawatt (MW) per year (fatalities/MW/year; Appendix C). Potential impacts to individuals in the Project Area are unlikely to cause significant adverse impacts to local or regional raptor populations because mortality rates are expected to be similar to other Midwestern wind energy projects, and the most commonly observed raptor species during surveys were red-tailed hawks, a common species in North America.

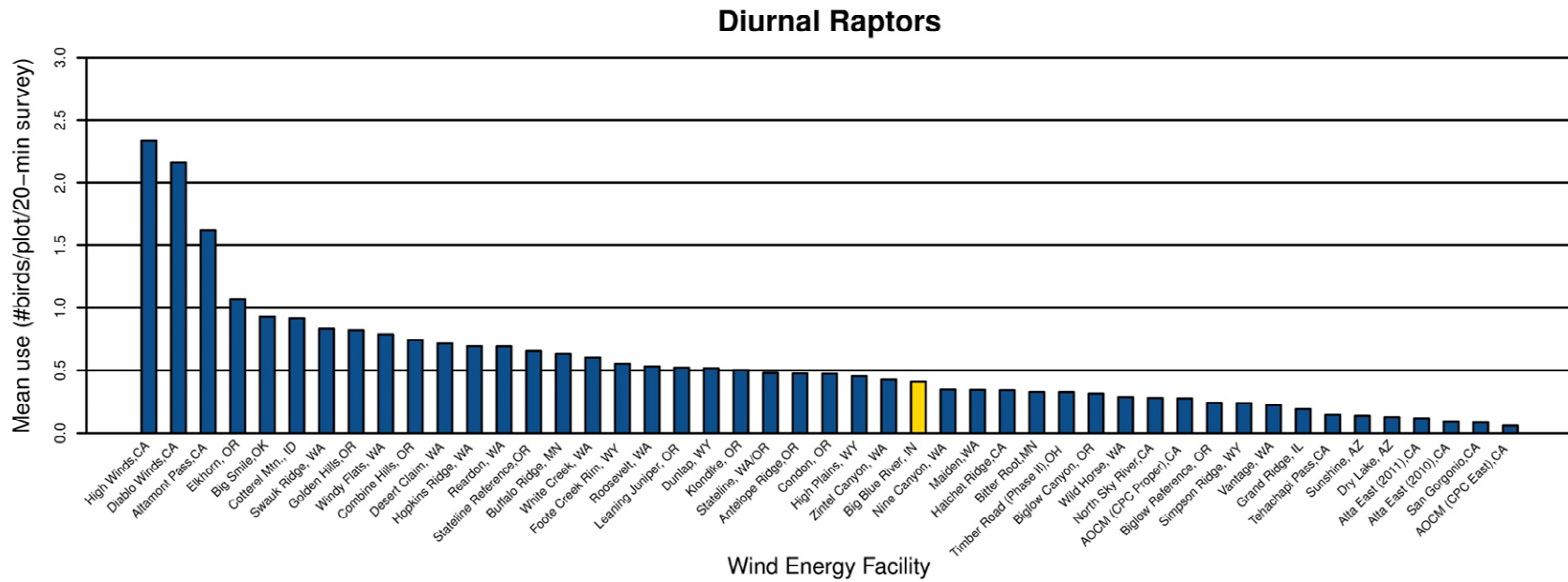


Figure 6. Comparison of diurnal raptor use (number of raptors/800-meter plot/20-minute survey) observed during fixed-point count avian use surveys at the Big Blue River Wind Project from December 3, 2015 to November 29, 2016, and annual diurnal raptor use recorded during comparable surveys at other North American wind energy projects.

Figure 6 (continued). Comparison of diurnal raptor use (number of raptors/800-meter plot/20-minute survey) observed during fixed-point count avian use surveys at the Big Blue River Wind Project from December 3, 2015 to November 29, 2016, and annual diurnal raptor use recorded during comparable surveys at other North American wind energy projects.

Data from the following sources:

Study and Location	Reference	Study and Location	Reference	Study and Location	Reference
Big Blue River, IN	This study.				
High Winds, CA	Kerlinger et al. 2005	Foote Creek Rim, WY	Johnson et al. 2000b	Wild Horse, WA	Erickson et al. 2003d
Diablo Winds, CA (05-07)	WEST 2006	Roosevelt, WA	NWC and WEST 2004	North Sky River, CA	Erickson et al. 2011
Altamont Pass, CA	Orloff and Flannery 1992	Leaning Juniper, OR	Kronner et al. 2005	AOCM (CPC Proper), CA	Chatfield et al. 2010a
Elkhorn, OR	WEST 2005a	Dunlap, WY	Johnson et al. 2009a	Biglow Reference, OR	WEST 2005c
Big Smile, OK (12-13)	Derby et al. 2010a	Klondike, OR	Johnson et al. 2002	Simpson Ridge, WY	Johnson et al. 2000b
Cotterel Mtn., ID	BLM 2006	Stateline, WA/OR	Erickson et al. 2003a	Vantage, WA	Jeffrey et al. 2007
Swauk Ridge, WA	Erickson et al. 2003b	Antelope Ridge, OR	WEST 2009	Grand Ridge, IL	Derby et al. 2009
Golden Hills, OR	Jeffrey et al. 2008	Condon, OR	Erickson et al. 2002b	Tehachapi Pass, CA	Anderson et al. 2000, Erickson et al. 2002b
Windy Flats, WA	Johnson et al. 2007	High Plains, WY	Johnson et al. 2009b	Sunshine, AZ	WEST and the CPRS 2006
Combine Hills, OR	Young et al. 2003d	Zintel Canyon, WA	Erickson et al. 2002a, 2003c	Dry Lake, AZ	Young et al. 2007c
Desert Claim, WA	Young et al. 2003b	Nine Canyon, WA	Erickson et al. 2001	Alta East (2011), CA	Chatfield et al. 2011
Hopkins Ridge, WA	Young et al. 2003a	Maiden, WA	Young et al. 2002	Alta East (2010), CA	Chatfield et al. 2011
Reardon, WA	WEST 2005b	Hatchet Ridge, CA	Young et al. 2007b	San Gorgonio, CA	Anderson et al. 2000, Erickson et al. 2002b
Stateline Reference, OR	URS et al. 2001	Bitter Root, MN	Derby and Dahl 2009	AOCM (CPC East), CA	Chatfield et al. 2010a
Buffalo Ridge, MN	Johnson et al. 2000a	Timber Road (Phase II), OH	Good et al. 2010		
White Creek, WA	NWC and WEST 2005	Biglow Canyon, OR	WEST 2005c		

Sensitive Species

No species protected by the federal Endangered Species Act (Public Law 93-205 1973) were observed during the surveys. Two Indiana endangered species were observed: northern harrier, and osprey. In addition, five species of concern were observed: bald eagle, common nighthawk, red-shouldered hawk, sandhill crane and sharp-shinned hawk (*Accipiter striatus*).

Northern Harrier

Northern harriers are commonly observed during fixed-point count avian use surveys at wind energy projects, yet no fatalities of this species have been recorded in the Midwest (Table 12, Appendix D). The lack of fatalities is likely due to the northern harrier hunting and flight habits; northern harriers generally hunt and fly at low elevations, and therefore, have a low risk of collision with modern wind turbines (Whitfield and Madders 2005). Northern harriers were most commonly observed during fall migration and winter, suggesting a low potential for suitable nesting habitat in the Project Area.

Sandhill Crane

Sandhill cranes were observed during the winter migration period in the Project Area but do not seem to be especially susceptible to turbine collisions. At one wind energy facility located in the sandhill crane central flyway, 296 sandhill crane observations were recorded in 2009, and 386 observations in 2010, but no fatalities were reported (Wessington Springs, South Dakota; Derby et al. 2010g, 2011d). Only three sandhill crane fatalities have been reported to date in the U.S., two occurring in west Texas and one in west central California. Based on the lack of sandhill crane fatalities at other wind energy facilities in the Midwest, the potential for sandhill cranes to collide with wind turbines in the Project Area appears to be limited. Sandhill cranes were only observed during migration, and their preferred habitat such as wetlands and grasslands are not commonly found within the Project Area (USFWS 2016c).

Osprey, Common Nighthawk, Red-shouldered Hawk, and Sharp-shinned Hawk

The use by osprey and common nighthawk was low within the Project Area, with only one observation each. There are no known fatality records for either of these species at wind energy projects in the Midwest, with publicly available data, and the risk to these species is expected to be low (Table 12, Appendix D). Red-shouldered hawks were also observed in low numbers (10 observations in 9 groups; Table 8) but since there are no known fatality records (Table 12), risk for this species is also expected to be low. Sharp-shinned hawk was the third most common fatality found at other wind energy facilities in the Midwest (after red-tailed hawk and American kestrel; Table 12). Five observations in five groups suggest low use of the Project Area by sharp-shinned hawks and therefore at low risk for collision with turbines.

REFERENCES

- AECOM. 2013. Annual Monitoring Report: July 2012 - June 2013. Solano Wind Project - Phase 3. Prepared for SMUD - Environmental Management, Sacramento, California. Prepared by AECOM, Sacramento, California. September 2013.
- Allison, T. D. 2012. Eagles and Wind Energy: Identifying Research Priorities. American Wind Wildlife Institute, Washington, D.C. May 2012. Available online at: https://awwi.org/wp-content/uploads/2013/09/AWWI_White_Paper_Eagles_and_Wind_Energy_May_2012.pdf
- Anderson, R., D. Strickland, J. Tom, N. Neumann, W. Erickson, J. Cleckler, G. Mayorga, G. Nuhn, A. Leuders, J. Schneider, L. Backus, P. Becker, and N. Flagg. 2000. Avian Monitoring and Risk Assessment at Tehachapi Pass and San Gorgonio Pass Wind Resource Areas, California: Phase 1 Preliminary Results. *In*: Proceedings of the National Avian Wind Power Planning Meeting III (PNAWPPM-III), May 1998, San Diego, California. National Wind Coordinating Collaborative (NWCC)/RESOLVE, Washington, D.C. Pp 31-46.
- ARCADIS U.S., Inc. 2013. Fall 2012 and Spring 2013 Avian and Bat Post-Construction Mortality Monitoring Report: Pioneer Trail Wind Farm. Prepared for E.On Climate & Renewables, North America. Prepared by ARCADIS U.S., Inc., Milwaukee, Wisconsin. August 2013.
- Arnett, E. B., W. P. Erickson, J. Kerns, and J. Horn. 2005. Relationships between Bats and Wind Turbines in Pennsylvania and West Virginia: An Assessment of Fatality Search Protocols, Patterns of Fatality, and Behavioral Interactions with Wind Turbines. Prepared for the Bats and Wind Energy Cooperative. March 2005.
- Arnett, E. B., M. R. Schirmacher, C. D. Hein, and M. M. P. Huso. 2011. Patterns of Bird and Bat Fatality at the Locust Ridge li Wind Project, Pennsylvania. 2009-2010 Final Report. Prepared for the Bats and Wind Energy Cooperative (BWEC) and the Pennsylvania Game Commission (PGC). Prepared by Bat Conservation International (BCI), Austin, Texas. January 2011.
- Arnett, E. B., M. R. Schirmacher, M. M. P. Huso, and J. P. Hayes. 2009a. Effectiveness of Changing Wind Turbine Cut-in Speed to Reduce Bat Fatalities at Wind Facilities: 2008 Annual Report. Prepared for the Bats and Wind Energy Cooperative (BWEC) and the Pennsylvania Game Commission. Bat Conservation International (BCI), Austin, Texas. April 2009. http://www.batsandwind.org/pdf/Curtailment_2008_Final_Report.pdf
- Arnett, E. B., M. R. Schirmacher, M. M. P. Huso, and J. P. Hayes. 2009b. Patterns of Bat Fatality at the Casselman Wind Project in South-Central Pennsylvania. 2008 Annual Report. Annual report prepared for the Bats and Wind Energy Cooperative (BWEC) and the Pennsylvania Game Commission. Bat Conservation International (BCI), Austin, Texas. June 2009. Available online at: <http://www.batsandwind.org/pdf/2008%20Casselman%20Fatality%20Report.pdf>
- Arnett, E. B., M. R. Schirmacher, M. M. P. Huso, and J. P. Hayes. 2010. Patterns of Bat Fatality at the Casselman Wind Project in South-Central Pennsylvania. 2009 Annual Report. Annual report prepared for the Bats and Wind Energy Cooperative (BWEC) and the Pennsylvania Game Commission. Bat Conservation International (BCI), Austin, Texas. January 2010.
- Baerwald, E. F. 2008. Variation in the Activity and Fatality of Migratory Bats at Wind Energy Facilities in Southern Alberta: Causes and Consequences. Thesis. University of Calgary, Calgary, Alberta, Canada.

- Bay, K., K. Nasman, W. Erickson, K. Taylor, and K. Kosciuch. 2016. Predicting Eagle Fatalities at Wind Facilities. *Journal of Wildlife Management* 80(6): 1000-1010. doi: 10.1002/jwmg.21086.
- BHE Environmental, Inc. (BHE). 2010. Post-Construction Bird and Bat Mortality Study: Cedar Ridge Wind Farm, Fond Du Lac County, Wisconsin. Interim Report prepared for Wisconsin Power and Light, Madison, Wisconsin. Prepared by BHE Environmental, Inc. Cincinnati, Ohio. February 2010.
- BHE Environmental, Inc. (BHE). 2011. Post-Construction Bird and Bat Mortality Study: Cedar Ridge Wind Farm, Fond Du Lac County, Wisconsin. Final Report. Prepared for Wisconsin Power and Light, Madison, Wisconsin. Prepared by BHE Environmental, Inc. Cincinnati, Ohio. February 2011.
- BioResource Consultants, Inc. (BRC). 2010. 2009/2010 Annual Report: Bird and Bat Mortality Monitoring, Pine Tree Wind Farm, Kern County, California. To the Los Angeles Department of Water and Power, from AECOM, Irvine, California. Report prepared by BioResource Consultants, Inc., Ojai, California. October 14, 2010.
- BioResource Consultants, Inc. (BRC). 2012. Avian Mortality Monitoring Report, Pine Tree Wind Farm, Kern County, California. Prepared for the City of Los Angeles Department of Water and Power. Report prepared by BioResource Consultants, Inc., Ojai, California. March 26, 2012.
- Brown, K., K. S. Smallwood, and B. Karas. 2013. Final 2012-2013 Annual Report, Avian and Bat Monitoring Project, Vasco Winds, Llc. Prepared for NextEra Energy Resources, Livermore, California. Prepared by Ventus Environmental Solutions, Portland, Oregon. September 2013.
- Brown, W. K. and B. L. Hamilton. 2004. Bird and Bat Monitoring at the Mcbride Lake Wind Farm, Alberta, 2003-2004. Report for Vision Quest Windelectric, Inc., Calgary, Alberta, Canada. September 2004.
- Brown, W. K. and B. L. Hamilton. 2006a. Bird and Bat Interactions with Wind Turbines Castle River Wind Facility, Alberta, 2001-2002. Report for Vision Quest Windelectric, Inc., Calgary, Alberta, Canada.
- Brown, W. K. and B. L. Hamilton. 2006b. Monitoring of Bird and Bat Collisions with Wind Turbines at the Summerview Wind Power Project, Alberta: 2005-2006. Prepared for Vision Quest Windelectric, Calgary, Alberta by TAEM Ltd., Calgary, Alberta, and BLH Environmental Services, Pincher Creek, Alberta. September 2006. <http://www.batsandwind.org/pdf/Brown2006.pdf>
- Buehler, D. A. 2000. Bald Eagle (*Haliaeetus Leucocephalus*). A. Poole, ed. *The Birds of North America Online*. Cornell Lab of Ornithology. Ithaca, New York. Retrieved from the *Birds of North America Online*: <http://bna.birds.cornell.edu/bna/species/506>
- Bureau of Land Management (BLM). 2006. Final Environmental Impact Statement for the Proposed Cotterel Wind Power Project and Proposed Resource Management Plan Amendment. FES 06-07. Serial No. IDI-33676. Prepared for the US Department of the Interior (USDOI), BLM, Twin Falls District, Burley Field Office, Cassia County, Idaho, on behalf of Windland, Inc., Boise, Idaho, and Shell WindEnergy Inc., Houston, Texas. March 2006.
- Chatfield, A. and K. Bay. 2014. Post-Construction Studies for the Mustang Hills and Alta Viii Wind Energy Facilities, Kern County, California. Final Report for the First Year of Operation: July 2012 - October 2013. Prepared for EverPower Wind Holdings, Inc. and Brookfield Renewable Energy Group. Prepared by Western EcoSystems Technology, Inc. (WEST), Cheyenne, Wyoming. February 28, 2014.
- Chatfield, A., W. Erickson, and K. Bay. 2009. Avian and Bat Fatality Study, Dillon Wind-Energy Facility, Riverside County, California. Final Report: March 26, 2008 - March 26, 2009. Prepared for

- Iberdrola Renewables, Portland, Oregon. Prepared by Western EcoSystems Technology, Inc. (WEST), Cheyenne, Wyoming. June 3, 2009.
- Chatfield, A., W. P. Erickson, and K. Bay. 2010a. Avian Baseline Studies at the Sun Creek Wind Resource Area, Kern County, California. Final Report: May 2009 - May 2010. Prepared for CH2M HILL, Oakland, California. Prepared by Western EcoSystems Technology, Inc., Cheyenne, Wyoming. September 30, 2010. Available online at: http://www.blm.gov/pgdata/etc/medialib/blm/ca/pdf/ridgecrest/alta_east_wind.Par.78046.File.dat/D3%20Avian%20Baseline%20Studies%202010.pdf
- Chatfield, A., W. P. Erickson, and K. Bay. 2010b. Final Report: Avian and Bat Fatality Study at the Alite Wind-Energy Facility, Kern County, California. Final Report: June 15, 2009 – June 15, 2010. Prepared for CH2M HILL, Oakland, California. Prepared by Western EcoSystems Technology, Inc. (WEST), Cheyenne, Wyoming.
- Chatfield, A., W. P. Erickson, and K. Bay. 2011. Avian Baseline Studies at the Alta East Wind Resource Area, Kern County, California. Final Report: July 10, 2010 - June 1, 2011. Prepared for CH2M HILL, Oakland, California. Prepared by Western EcoSystems Technology, Inc. (WEST), Cheyenne, Wyoming. July 13, 2011. Available online at: http://www.blm.gov/style/medialib/blm/ca/pdf/ridgecrest/alta_east_wind.Par.22191.File.dat/D8%20Avian%20Baseline%20Studies%202011.pdf
- Chatfield, A., D. Riser-Espinoza, and K. Bay. 2014. Bird and Bat Mortality Monitoring at the Alta Wind Energy Center, Phases I - V, Kern County, California. Final Report for the Second Year of Operation: March 4, 2013 - March 6, 2014. Prepared for Alta Windpower Development, LLC, Mojave, California. Prepared by Western EcoSystems Technology, Inc. (WEST), Cheyenne, Wyoming. August 22, 2014.
- Chatfield, A. and D. Russo. 2014. Post-Construction Avian and Bat Fatality Monitoring for the Pinyon Pines I & II Wind Energy Project, Kern County, California. Final Report for the First Year of Operation: March 2013 - March 2014. Prepared for MidAmerican Renewables, LLC, Des Moines, Iowa, and Alta Windpower Development, LLC, Mojave, California. Prepared by Western EcoSystems Technology, Inc. (WEST), Cheyenne, Wyoming. July 28, 2014.
- Chatfield, A., M. Sonnenberg, and K. Bay. 2012. Avian and Bat Mortality Monitoring at the Alta-Oak Creek Mojave Project, Kern County, California. Final Report for the First Year of Operation March 22, 2011 – June 15, 2012. Prepared for Alta Windpower Development, LLC, Mojave, California. Prepared by Western EcoSystems Technology, Inc. (WEST), Cheyenne, Wyoming. September 12, 2012.
- Chodachek, K., K. Adachi, and G. DiDonato. 2015. Post Construction Fatality Surveys for the Prairie Rose Wind Energy Facility, Rock County, Minnesota. Final Report: April 15 to June 13, 2014, and August 15 to October 29, 2014. Prepared for Enel Green Power, North America, San Diego, California. Prepared by Western EcoSystems Technology, Inc. (WEST), Bismarck, North Dakota. January 23, 2015.
- Chodachek, K., C. Derby, K. Adachi, and T. Thorn. 2014. Post-Construction Fatality Surveys for the Pioneer Prairie II Wind Energy Facility, Mitchell County, Iowa. Final Report: July 1 – October 18, 2013. Prepared for EDP Renewables, North America LLC, Houston, Texas. Prepared by Western EcoSystems Technology Inc. (WEST), Bismarck, North Dakota. April 2014.
- Chodachek, K., C. Derby, M. Sonnenberg, and T. Thorn. 2012. Post-Construction Fatality Surveys for the Pioneer Prairie Wind Farm I LLC Phase II, Mitchell County, Iowa: April 4, 2011 – March 31, 2012.

- Prepared for EDP Renewables, North America LLC, Houston, Texas. Prepared by Western EcoSystems Technology, Inc. (WEST), Bismarck, North Dakota. August 27, 2012.
- Derby, C., K. Bay, and A. Dahl. 2010a. Wildlife Baseline Studies for the Dempsey Wind Resource Area, Roger Mills County, Oklahoma. Final Report: March 2008 – February 2009. Prepared for HDR Engineering, Minneapolis, Minnesota, and Dempsey Ridge Wind Farm, LLC, a wholly owned subsidiary of Acciona Wind Energy USA LLC, Chicago, Illinois. Prepared by Western EcoSystems Technology, Inc. (WEST), Bismarck, North Dakota. February 10, 2010.
- Derby, C., K. Bay, and J. Ritzert. 2009. Bird Use Monitoring, Grand Ridge Wind Resource Area, La Salle County, Illinois. Year One Final Report, March 2008 - February 2009. Prepared for Grand Ridge Energy LLC, Chicago, Illinois. Prepared by Western EcoSystems Technology, Inc. (WEST), Cheyenne, Wyoming. July 29, 2009.
- Derby, C., K. Chodachek, and K. Bay. 2010b. Post-Construction Bat and Bird Fatality Study Crystal Lake li Wind Energy Center, Hancock and Winnebago Counties, Iowa. Final Report: April 2009- October 2009. Prepared for NextEra Energy Resources, Juno Beach, Florida. Prepared by Western EcoSystems Technology, Inc. (WEST), Bismarck, North Dakota. June 2, 2010.
- Derby, C., K. Chodachek, K. Bay, and A. Merrill. 2010c. Post-Construction Fatality Survey for the Buffalo Ridge I Wind Project. May 2009 - May 2010. Prepared for Iberdrola Renewables, Inc., Portland, Oregon. Prepared by Western EcoSystems Technology, Inc. (WEST), Bismarck, North Dakota.
- Derby, C., K. Chodachek, K. Bay, and A. Merrill. 2010d. Post-Construction Fatality Surveys for the Elm Creek Wind Project: March 2009- February 2010. Prepared for Iberdrola Renewables, Inc. (IRI), Portland, Oregon. Prepared by Western EcoSystems Technology, Inc. (WEST), Bismarck, North Dakota.
- Derby, C., K. Chodachek, K. Bay, and A. Merrill. 2010e. Post-Construction Fatality Surveys for the Moraine li Wind Project: March - December 2009. Prepared for Iberdrola Renewables, Inc. (IRI), Portland, Oregon. Prepared by Western EcoSystems Technology, Inc. (WEST), Bismarck, North Dakota.
- Derby, C., K. Chodachek, K. Bay, and A. Merrill. 2010f. Post-Construction Fatality Surveys for the Winnebago Wind Project: March 2009- February 2010. Prepared for Iberdrola Renewables, Inc. (IRI), Portland, Oregon. Prepared by Western EcoSystems Technology, Inc. (WEST), Bismarck, North Dakota.
- Derby, C., K. Chodachek, K. Bay, and S. Nomani. 2011a. Post-Construction Fatality Surveys for the Barton I and li Wind Project: Iri. March 2010 - February 2011. Prepared for Iberdrola Renewables, Inc. (IRI), Portland, Oregon. Prepared by Western EcoSystems Technology, Inc. (WEST), Bismarck, North Dakota. Version: September 28, 2011.
- Derby, C., K. Chodachek, K. Bay, and S. Nomani. 2011b. Post-Construction Fatality Surveys for the Rugby Wind Project: Iberdrola Renewables, Inc. March 2010 - March 2011. Prepared for Iberdrola Renewables, Inc. (IRI), Portland, Oregon. Prepared by Western EcoSystems Technology, Inc. (WEST), Bismarck, North Dakota. Version: October 14, 2011.
- Derby, C., K. Chodachek, and M. Sonnenberg. 2012a. Post-Construction Casualty Surveys for the Buffalo Ridge li Wind Project. Iberdrola Renewables: March 2011- February 2012. Prepared for Iberdrola Renewables, LLC, Portland, Oregon. Prepared by Western EcoSystems Technology, Inc. (WEST), Bismarck, North Dakota. August 31, 2012.
- Derby, C., K. Chodachek, and M. Sonnenberg. 2012b. Post-Construction Fatality Surveys for the Elm Creek li Wind Project. Iberdrola Renewables: March 2011-February 2012. Prepared for Iberdrola

- Renewables, LLC, Portland, Oregon. Prepared by Western EcoSystems Technology, Inc. (WEST), Bismarck, North Dakota. October 8, 2012.
- Derby, C., K. Chodachek, T. Thorn, K. Bay, and S. Nomani. 2011c. Post-Construction Fatality Surveys for the Prairiewinds Nd1 Wind Facility, Basin Electric Power Cooperative, March - November 2010. Prepared for Basin Electric Power Cooperative, Bismarck, North Dakota. Prepared by Western EcoSystems Technology, Inc. (WEST), Bismarck, North Dakota. August 2, 2011.
- Derby, C., K. Chodachek, T. Thorn, and A. Merrill. 2012c. Post-Construction Surveys for the Prairiewinds Nd1 (2011) Wind Facility Basin Electric Power Cooperative: March - October 2011. Prepared for Basin Electric Power Cooperative, Bismarck, North Dakota. Prepared by Western Ecosystems Technology, Inc. (WEST), Bismarck, North Dakota. August 31, 2012.
- Derby, C. and A. Dahl. 2009. Wildlife Studies for the Bitter Root Wind Resource Area, Yellow, Medicine, and Lincoln Counties, Minnesota. Annual Report: March 25, 2008 - October 8, 2008. Prepared for Buffalo Ridge Power Partners, Argyle, New York. Prepared by Western EcoSystems Technology, Inc. (WEST), Bismarck, North Dakota. April 16, 2009. *In*: Minnesota Department of Commerce, Office of Energy Security. 2010. Bitter Root Wind Farm Project, Environmental Report. Site Permit Application, Appendix F. Minnesota Public Utilities Commission, Docket 25538. March 2010. Available online at:
http://www.calco.state.mn.us/commerce/energyfacilities/documents/25538/Appendix_%20F_Wildlife_Studies.pdf
- Derby, C., A. Dahl, K. Bay, and L. McManus. 2011d. 2010 Post-Construction Monitoring Results for the Wessington Springs Wind Energy Facility, South Dakota. Final Report: March 9 – November 16, 2010. Prepared for Wessington Wind Energy Center, LLC, Juno Beach, Florida. Prepared by Western EcoSystems Technology, Inc. (WEST), Bismarck, North Dakota. November 22, 2011.
- Derby, C., A. Dahl, and G. DiDonato. 2014. Post-Construction Fatality Monitoring Studies for the Prairiewinds Sd1 Wind Energy Facility, South Dakota. Final Report: March 2013 - February 2014. Prepared for Basin Electric Power Cooperative, Bismarck, North Dakota. Prepared by Western EcoSystems Technology, Inc. (WEST), Bismarck, North Dakota.
- Derby, C., A. Dahl, W. Erickson, K. Bay, and J. Hoban. 2007. Post-Construction Monitoring Report for Avian and Bat Mortality at the Nppd Ainsworth Wind Farm. Unpublished report prepared by Western EcoSystems Technology, Inc. (WEST), Cheyenne, Wyoming, for the Nebraska Public Power District.
- Derby, C., A. Dahl, and D. Fox. 2013a. Post-Construction Fatality Monitoring Studies for the Prairiewinds Sd1 Wind Energy Facility, South Dakota. Final Report: March 2012 - February 2013. Prepared for Basin Electric Power Cooperative, Bismarck, North Dakota. Prepared by Western EcoSystems Technology, Inc. (WEST), Bismarck, North Dakota. November 13, 2013.
- Derby, C., A. Dahl, and A. Merrill. 2012d. Post-Construction Monitoring Results for the Prairiewinds Sd1 Wind Energy Facility, South Dakota. Final Report: March 2011 - February 2012. Prepared for Basin Electric Power Cooperative, Bismarck, North Dakota. Prepared by Western EcoSystems Technology, Inc. (WEST), Bismarck, North Dakota. September 27, 2012.
- Derby, C., A. Dahl, A. Merrill, and K. Bay. 2010g. 2009 Post-Construction Monitoring Results for the Wessington Springs Wind-Energy Facility, South Dakota. Final Report. Prepared for Wessington Wind Energy Center, LLC, Juno Beach, Florida. Prepared by Western EcoSystems Technology, Inc. (WEST), Bismarck, North Dakota. August 19, 2010.

- Derby, C., G. Iskali, S. Howlin, T. Thorn, T. Lyon, and A. Dahl. 2013b. Post-Construction Monitoring Results for the Big Smile Wind Farm, Roger Mills County, Oklahoma. Final Report: March 2012 to February 2013. Prepared for Acciona Wind Energy, Chicago, Illinois. Prepared by Western EcoSystems Technology, Inc. (WEST), Bismarck, North Dakota. June 12, 2013.
- Derby, C., G. Iskali, M. Kauffman, T. Thorn, T. Lyon, and A. Dahl. 2013c. Post-Construction Monitoring Results, Red Hills Wind Farm, Roger Mills and Custer Counties, Oklahoma. Final Report: March 2012 to March 2013. Prepared for Acciona Wind Energy, Chicago, Illinois. Prepared by Western EcoSystems Technology, Inc. (WEST), Bismarck, North Dakota. June 12, 2013.
- Derby, C., J. Ritzert, and K. Bay. 2010h. Bird and Bat Fatality Study, Grand Ridge Wind Resource Area, LaSalle County, Illinois. January 2009 - January 2010. Prepared for Grand Ridge Energy LLC, Chicago, Illinois. Prepared by Western EcoSystems Technology, Inc. (WEST), Bismarck, North Dakota. July 13, 2010. Revised January 2011.
- Downes, S. and R. Gritski. 2012a. Harvest Wind Project Wildlife Monitoring Report: January 2010 – January 2012. Prepared for Harvest Wind Project, Roosevelt, Washington. Prepared by Northwest Wildlife Consultants, Inc., Pendleton, Oregon May 1, 2012.
- Downes, S. and R. Gritski. 2012b. White Creek Wind I Wildlife Monitoring Report: November 2007 - November 2011. Prepared for White Creek Wind I, LLC, Roosevelt, Washington. Prepared by Northwest Wildlife Consultants, Inc., Pendleton, Oregon May 1, 2012.
- eBird. 2016. eBird: An Online Database of Bird Distribution and Abundance. eBird, Cornell Lab of Ornithology, Ithaca, New York. Accessed January 2016. Available online at: <http://ebird.org/content/ebird/>
- Enk, T., K. Bay, M. Sonnenberg, J. Baker, M. Kesterke, J. R. Boehrs, and A. Palochak. 2010. Biglow Canyon Wind Farm Phase I Post-Construction Avian and Bat Monitoring Second Annual Report, Sherman County, Oregon. January 26, 2009 - December 11, 2009. Prepared for Portland General Electric Company, Portland, Oregon. Prepared by Western EcoSystems Technology, Inc. (WEST) Cheyenne, Wyoming, and Walla Walla, Washington. April 2010.
- Enk, T., K. Bay, M. Sonnenberg, and J. R. Boehrs. 2012a. Year 1 Avian and Bat Monitoring Report: Biglow Canyon Wind Farm Phase Iii, Sherman County, Oregon. September 13, 2010 - September 9, 2011. Prepared for Portland General Electric Company, Portland, Oregon. Prepared by Western EcoSystems Technology, Inc. (WEST), Cheyenne, Wyoming, and Walla Walla, Washington. April 24, 2012.
- Enk, T., K. Bay, M. Sonnenberg, and J. R. Boehrs. 2012b. Year 2 Avian and Bat Monitoring Report: Biglow Canyon Wind Farm Phase Iii, Sherman County, Oregon. September 13, 2010 - September 15, 2011. Prepared for Portland General Electric Company, Portland, Oregon. Prepared by Western EcoSystems Technology, Inc. (WEST), Cheyenne, Wyoming, and Walla Walla, Washington. April 23, 2012.
- Enk, T., K. Bay, M. Sonnenberg, J. Flaig, J. R. Boehrs, and A. Palochak. 2011a. Year 1 Post-Construction Avian and Bat Monitoring Report: Biglow Canyon Wind Farm Phase Iii, Sherman County, Oregon. September 10, 2009 - September 12, 2010. Prepared for Portland General Electric Company, Portland, Oregon. Prepared by Western EcoSystems Technology, Inc. (WEST), Cheyenne, Wyoming, and Walla Walla, Washington. January 7, 2011.
- Enk, T., C. Derby, K. Bay, and M. Sonnenberg. 2011b. 2010 Post-Construction Fatality Monitoring Report, Elkhorn Valley Wind Farm, Union County, Oregon. January – December 2010. Prepared for EDP Renewables, North America LLC, Houston, Texas. Prepared by Western EcoSystems

- Technology, Inc. (WEST), Walla Walla, Washington, and Cheyenne, Wyoming. December 8, 2011.
- Enz, T. and K. Bay. 2010. Post-Construction Avian and Bat Fatality Monitoring Study, Tuolumne Wind Project, Klickitat County, Washington. Final Report: April 20, 2009 - April 7, 2010. Prepared for Turlock Irrigation District, Turlock, California. Prepared by Western EcoSystems Technology, Inc. (WEST), Cheyenne, Wyoming. July 6, 2010.
- Enz, T. and K. Bay. 2011. Post-Construction Monitoring at the Linden Ranch Wind Farm, Klickitat County, Washington. Final Report: June 30, 2010 - July 17, 2011. Prepared for EnXco. Prepared by Western EcoSystems Technology, Inc. (WEST), Cheyenne, Wyoming. November 10, 2011.
- Enz, T., K. Bay, S. Nomani, and M. Kesterke. 2011. Bird and Bat Fatality Monitoring Study, Windy Flats and Windy Point II Wind Energy Projects, Klickitat County, Washington. Final Report: February 1, 2010 - January 14, 2011. Prepared for Windy Flats Partners, LLC, Goldendale, Washington. Prepared by Western EcoSystems Technology, Inc. (WEST), Cheyenne, Wyoming. August 19, 2011.
- Enz, T., K. Bay, M. Sonnenberg, and A. Palochak. 2012. Post-Construction Monitoring Studies for the Combine Hills Turbine Ranch, Umatilla County, Oregon. Final Report: January 7 - December 2, 2011. Prepared for Eurus Energy America Corporation, San Diego, California. Prepared by Western EcoSystems Technology, Inc. (WEST), Walla Walla, Washington.
- Erickson, W. P., A. Chatfield, and K. Bay. 2011. Avian Baseline Studies for the North Sky River Wind Energy Project, Kern County, California. Final Report: May 18, 2010 – May 26, 2011. Final Report. Prepared for CH2M HILL, Portland Oregon. Prepared by Western EcoSystems Technology, Inc. (WEST), Cheyenne, Wyoming. July 7, 2011.
- Erickson, W. P., J. Jeffrey, K. Kronner, and K. Bay. 2003a. Stateline Wind Project Wildlife Monitoring Annual Report, Results for the Period July 2001 - December 2002. Technical report submitted to FPL Energy, the Oregon Office of Energy, and the Stateline Technical Advisory Committee. Western EcoSystems Technology, Inc., Cheyenne, Wyoming. May 2003.
- Erickson, W. P., J. Jeffrey, K. Kronner, and K. Bay. 2004. Stateline Wind Project Wildlife Monitoring Annual Report. July 2001 - December 2003. Technical report peer-reviewed by and submitted to FPL Energy, the Oregon Energy Facility Siting Council, and the Stateline Technical Advisory Committee. Western EcoSystems Technology, Inc. (WEST), Cheyenne, Wyoming, and Northwest Wildlife Consultants, Inc. (NWC), Pendleton, Oregon. December 2004. Available online at: http://www.west-inc.com/reports/swp_final_dec04.pdf
- Erickson, W. P., J. Jeffrey, D. P. Young, K. Bay, R. Good, K. Sernka, and K. Kronner. 2003b. Wildlife Baseline Study for the Kittitas Valley Wind Project: Summary of Results from 2002 Wildlife Surveys. Final Report: February 2002– November 2002. Prepared for Zilkha Renewable Energy, Portland, Oregon. Prepared by Western EcoSystems Technology, Inc. (WEST), Cheyenne, Wyoming, and Northwest Wildlife Consultants, Inc. (NWC), Pendleton, Oregon. January 2003.
- Erickson, W. P., J. D. Jeffrey, and V. K. Poulton. 2008. Puget Sound Energy Wild Horse Wind Facility Avian and Bat Monitoring: First Annual Report: January–December, 2007. Prepared for Puget Sound Energy, Ellensburg, Washington. Prepared by Western EcoSystems Technology, Inc. (WEST), Cheyenne, Wyoming. January 2008.
- Erickson, W. P., G. D. Johnson, K. Bay, and K. Kronner. 2002a. Ecological Baseline Study for the Zintel Canyon Wind Project. Final Report April 2001 – June 2002. Technical report prepared for Energy Northwest. Prepared for Energy Northwest by Western EcoSystems Technology, Inc. (WEST),

- Cheyenne, Wyoming, and Northwest Wildlife Consultants, Inc. (NWC), Pendleton, Oregon. June 2002.
- Erickson, W. P., G. D. Johnson, M. D. Strickland, and K. Kronner. 2000. Avian and Bat Mortality Associated with the Vansycle Wind Project, Umatilla County, Oregon. Technical Report prepared by WEST, Inc., for Umatilla County Department of Resource Services and Development, Pendleton, Oregon. 21 pp.
- Erickson, W. P., G. D. Johnson, D. P. Young, D. Strickland, R. Good, M. Bourassa, K. Bay, and K. Sernka. 2002b. Synthesis and Comparison of Baseline Avian and Bat Use, Raptor Nesting and Mortality Information from Proposed and Existing Wind Developments. Technical report prepared for Bonneville Power Administration, Portland, Oregon by WEST, Inc., Cheyenne, Wyoming. December 2002. http://www.bpa.gov/Power/pgc/wind/Avian_and_Bat_Study_12-2002.pdf
- Erickson, W. P., K. Kronner, and K. J. Bay. 2007. Stateline 2 Wind Project Wildlife Monitoring Report, January - December 2006. Technical report submitted to FPL Energy, the Oregon Energy Facility Siting Council, and the Stateline Technical Advisory Committee.
- Erickson, W. P., K. Kronner, and R. Gritski. 2003c. Nine Canyon Wind Power Project Avian and Bat Monitoring Report. September 2002 – August 2003. Prepared for the Nine Canyon Technical Advisory Committee and Energy Northwest by Western EcoSystems Technology, Inc. (WEST), Cheyenne, Wyoming, and Northwest Wildlife Consultants (NWC), Pendleton, Oregon. October 2003. http://www.west-inc.com/reports/nine_canyon_monitoring_final.pdf
- Erickson, W. P., K. Kronner, and R. Gritski. 2005. Nine Canyon Wind Project Phase II, Fall 2004 Avian and Bat Monitoring Report: July 25 – November 2, 2004. Prepared for the Nine Canyon Technical Advisory Committee, Energy Northwest, by Western Ecosystems Technology, Inc. (WEST), Cheyenne, Wyoming and Northwest Wildlife Consultants, Inc. (NWC), Pendleton, Oregon. March 2005.
- Erickson, W. P., E. Lack, M. Bourassa, K. Sernka, and K. Kronner. 2001. Wildlife Baseline Study for the Nine Canyon Wind Project, Final Report May 2000-October 2001. Technical report prepared for Energy Northwest, Richland, Washington. Prepared by Western EcoSystems Technology, Inc. (WEST), Cheyenne, Wyoming, and Northwest Wildlife Consultants, Inc. (NWC), Pendleton, Oregon.
- Erickson, W. P. and L. Sharp. 2005. Phase 1 and Phase 1a Avian Mortality Monitoring Report for 2004-2005 for the Smud Solano Wind Project. Prepared for Sacramento Municipal Utility District (SMUD), Sacramento, California. Prepared by URS Sacramento, California and Western EcoSystems Technology, Inc. (WEST). August 2005.
- Erickson, W. P., M. M. Wolfe, K. J. Bay, D. H. Johnson, and J. L. Gehring. 2014. A Comprehensive Analysis of Small Passerine Fatalities from Collisions with Turbines at Wind Energy Facilities. *PLoS ONE* 9(9): e107491. doi: 10.1371/journal.pone.0107491.
- Erickson, W. P., D. P. Young, G. Johnson, J. Jeffrey, K. Bay, R. Good, and H. Sawyer. 2003d. Wildlife Baseline Study for the Wild Horse Wind Project. Summary of Results from 2002-2003 Wildlife Surveys May 10, 2002- May 22, 2003. Draft report prepared for Zilkha Renewable Energy, Portland, Oregon. Prepared by Western EcoSystems Technology, Inc. (WEST), Cheyenne, Wyoming. November 2003.
- ESRI. 2013. World Topographic Map. ArcGIS Resource Center. ESRI, producers of ArcGIS software. ESRI, Redlands, California. Last modified June 6, 2013. Accessed November 2016.

- ESRI. 2016. World Street Map. ArcGIS Resource Center. ESRI, producers of ArcGIS software, Redlands, California. Data accessed October 2016.
- Fagen Engineering, LLC. 2014. 2013 Avian and Bat Monitoring Annual Report: Big Blue Wind Farm, Blue Earth, Minnesota. Prepared for Big Blue Wind Farm. Prepared by Fagen Engineering, LLC. May 2014.
- Fagen Engineering, LLC. 2015. 2014 Avian and Bat Monitoring Annual Report: Big Blue Wind Farm, Blue Earth, Minnesota. Prepared for Big Blue Wind Farm. Prepared by Fagen Engineering, LLC.
- Fiedler, J. K., T. H. Henry, R. D. Tankersley, and C. P. Nicholson. 2007. Results of Bat and Bird Mortality Monitoring at the Expanded Buffalo Mountain Windfarm, 2005. Tennessee Valley Authority. June 28, 2007.
- Fishman Ecological Services LLC. 2003. Carcass Survey Results for Seawest Windpower, Inc., Condon Site 2002-2003. Prepared for SeaWest WindPower Inc.
- Gelman, A., J. B. Carlin, H. S. Stern, D. B. Dunson, A. Vehtari, and D. B. Rubin. 2013. Bayesian Data Analysis. CRC Press, London.
- Golder Associates. 2010. Report on Fall Post-Construction Monitoring, Ripley Wind Power Project, Acciona Wind. Report Number 09-1126-0029. Submitted to Suncor Energy Products Inc., Calgary, Alberta, and Acciona Wind Energy Canada, Toronto, Ontario. February 2010.
- Good, R. E., W. P. Erickson, A. Merrill, S. Simon, K. Murray, K. Bay, and C. Fritchman. 2011. Bat Monitoring Studies at the Fowler Ridge Wind Energy Facility, Benton County, Indiana: April 13 - October 15, 2010. Prepared for Fowler Ridge Wind Farm. Prepared by Western EcoSystems Technology, Inc. (WEST), Cheyenne, Wyoming. January 28, 2011.
- Good, R. E., A. Merrill, S. Simon, K. Murray, and K. Bay. 2012. Bat Monitoring Studies at the Fowler Ridge Wind Farm, Benton County, Indiana: April 1 - October 31, 2011. Prepared for the Fowler Ridge Wind Farm. Prepared by Western EcoSystems Technology, Inc. (WEST), Bloomington, Indiana. January 31, 2012.
- Good, R. E., J. P. Ritzert, and K. Adachi. 2013a. Post-Construction Monitoring at the Top Crop Wind Farm, Gundy and LaSalle Counties, Illinois. Final Report: May 2012 - May 2013. Prepared for EDP Renewables, Houston, Texas. Prepared by Western EcoSystems Technology, Inc. (WEST), Bloomington, Indiana. October 22, 2013.
- Good, R. E., M. Ritzert, and K. Bay. 2010. Wildlife Baseline Studies for the Timber Road Phase II Wind Resource Area, Paulding County, Ohio. Final Report: September 2, 2008 - August 19, 2009. Prepared for Horizon Wind Energy, Houston, Texas. Prepared by Western EcoSystems Technology, Inc. (WEST), Bloomington, Indiana. April 28, 2010.
- Good, R. E., M. L. Ritzert, and K. Adachi. 2013b. Post-Construction Monitoring at the Rail Splitter Wind Farm, Tazwell and Logan Counties, Illinois. Final Report: May 2012 - May 2013. Prepared for EDP Renewables, Houston, Texas. Prepared by Western EcoSystems Technology, Inc. (WEST), Bloomington, Indiana. October 22, 2013.
- Good, R. E., M. Sonnenburg, and S. Simon. 2013c. Bat Evaluation Monitoring Studies at the Fowler Ridge Wind Farm, Benton County, Indiana: August 1 - October 15, 2012. Prepared for the Fowler Ridge Wind Farm. Prepared by Western EcoSystems Technology, Inc. (WEST), Bloomington, Indiana. January 31, 2013.
- Grehan, J. R. 2008. Steel Winds Bird Mortality Study, Final Report, Lackawanna, New York. Prepared for Steel Winds LLC. April 2008.

- Gritski, R., S. Downes, and K. Kronner. 2010. Klondike Iii (Phase 1) Wind Power Project Wildlife Monitoring: October 2007-October 2009. Prepared for Iberdrola Renewables, Inc. (IRI), Portland, Oregon, for Klondike Wind Power III LLC. Prepared by Northwest Wildlife Consultants, Inc. (NWC), Pendleton, Oregon. April 21, 2010 (Updated September 2010). Available online at: <http://www.oregon.gov/energy/Siting/docs/KWP/KWPWildlifeReport091210.pdf>
- Gritski, R., S. Downes, and K. Kronner. 2011. Klondike Iiia (Phase 2) Wind Power Project Wildlife Monitoring: August 2008 - August 2010. Updated Final. Prepared for Iberdrola Renewables, Inc. (IRI), Portland, Oregon, for Klondike Wind Power III LLC. Prepared by Northwest Wildlife Consultants, Inc. (NWC), Pendleton, Oregon. Updated April 2011. Available online at: <http://www.oregon.gov/energy/Siting/docs/KWP/KWPWildlifeReport042711.pdf>
- Gritski, R. and K. Kronner. 2010a. Hay Canyon Wind Power Project Wildlife Monitoring Study: May 2009 - May 2010. Prepared for Iberdrola Renewables, Inc. (IRI), Hay Canyon Wind Power Project LLC. Prepared by Northwest Wildlife Consultants, Inc. (NWC), Pendleton, Oregon. September 20, 2010.
- Gritski, R. and K. Kronner. 2010b. Pebble Springs Wind Power Project Wildlife Monitoring Study: January 2009 - January 2010. Prepared for Iberdrola Renewables, Inc. (IRI), and the Pebble Springs Advisory Committee. Prepared by Northwest Wildlife Consultants, Inc. (NWC), Pendleton, Oregon. April 20, 2010.
- Gritski, R., K. Kronner, and S. Downes. 2008. Leaning Juniper Wind Power Project, 2006 – 2008. Wildlife Monitoring Final Report. Prepared for PacifiCorp Energy, Portland, Oregon. Prepared by Northwest Wildlife Consultants, Inc. (NWC), Pendleton, Oregon. December 30, 2008.
- Grodsky, S. M. and D. Drake. 2011. Assessing Bird and Bat Mortality at the Forward Energy Center. Final Report. Public Service Commission (PSC) of Wisconsin. PSC REF#:152052. Prepared for Forward Energy LLC. Prepared by Department of Forest and Wildlife Ecology, University of Wisconsin-Madison, Madison, Wisconsin. August 2011.
- Gruver, J., M. Sonnenberg, K. Bay, and W. Erickson. 2009. Post-Construction Bat and Bird Fatality Study at the Blue Sky Green Field Wind Energy Center, Fond Du Lac County, Wisconsin July 21 - October 31, 2008 and March 15 - June 4, 2009. Unpublished report prepared by Western EcoSystems Technology, Inc. (WEST), Cheyenne, Wyoming. December 17, 2009.
- Harvey & Associates. 2013. Montezuma II Wind Energy Center: Post Construction Monitoring Report, Year-1. Prepared by NextEra Montezuma II Wind, LLC, Juno Beach, Florida. Prepared by H.T. Harvey & Associates, Los Gatos, California. September 3, 2013.
- Hein, C. D., A. Prichard, T. Mabee, and M. R. Schirmacher. 2013. Avian and Bat Post-Construction Monitoring at the Pinnacle Wind Farm, Mineral County, West Virginia, 2012. Final Report. Bat Conservation International, Austin, Texas, and ABR, Inc., Forest Grove, Oregon. April 2013.
- Homer, C. G., J. A. Dewitz, L. Yang, S. Jin, P. Danielson, G. Xian, J. Coulston, N. D. Herold, J. D. Wickham, and K. Megown. 2015. Completion of the 2011 National Land Cover Database for the Conterminous United States-Representing a Decade of Land Cover Change Information. *Photogrammetric Engineering and Remote Sensing* 81(5): 345-354. Available online from: <http://www.mrlc.gov/nlcd2011.php>
- Howe, R. W., W. Evans, and A. T. Wolf. 2002. Effects of Wind Turbines on Birds and Bats in Northeastern Wisconsin. Prepared by University of Wisconsin-Green Bay, for Wisconsin Public Service Corporation and Madison Gas and Electric Company, Madison, Wisconsin. November 21, 2002. 104 pp.

- ICF International. 2012. Montezuma Wind Llc (Montezuma I) 2011 Avian and Bat Fatality Monitoring Report. Prepared for NextEra Energy Resources. Prepared by ICF International, Sacramento, California. May 17, 2012.
- ICF International. 2013. Montezuma Wind Llc (Montezuma I) 2012 Avian and Bat Fatality Monitoring Report. Prepared for NextEra Energy Resources. Prepared by ICF International, Sacramento, California. May 2013.
- Insignia Environmental. 2009. 2008/2009 Annual Report for the Buena Vista Avian and Bat Monitoring Project. Prepared for Contra Costa County, Martinez, California. Prepared by Insignia Environmental, Palo Alto, California. September 4, 2009.
- Iowa Department of Natural Resources (IDNR). 2016. Iowa's Threatened and Endangered Species Program. Accessed February 2016. Information available online at: <http://www.iowadnr.gov/Conservation/Threatened-Endangered>
- Jacques Whitford Stantec Limited (Jacques Whitford). 2009. Ripley Wind Power Project Postconstruction Monitoring Report. Project No. 1037529.01. Report to Suncor Energy Products Inc., Calgary, Alberta, and Acciona Energy Products Inc., Calgary, Alberta. Prepared for the Ripley Wind Power Project Post-Construction Monitoring Program. Prepared by Jacques Whitford, Markham, Ontario. April 30, 2009.
- Jain, A. 2005. Bird and Bat Behavior and Mortality at a Northern Iowa Windfarm. M.S. Thesis. Iowa State University, Ames, Iowa.
- Jain, A., P. Kerlinger, R. Curry, and L. Slobodnik. 2007. Annual Report for the Maple Ridge Wind Power Project: Post-Construction Bird and Bat Fatality Study – 2006. Final Report. Prepared for PPM Energy and Horizon Energy and Technical Advisory Committee (TAC) for the Maple Ridge Project Study.
- Jain, A., P. Kerlinger, R. Curry, and L. Slobodnik. 2009a. Annual Report for the Maple Ridge Wind Power Project: Post-Construction Bird and Bat Fatality Study - 2007. Final report prepared for PPM Energy and Horizon Energy and Technical Advisory Committee (TAC) for the Maple Ridge Project Study. May 6, 2009.
- Jain, A., P. Kerlinger, R. Curry, L. Slobodnik, A. Fuerst, and C. Hansen. 2009b. Annual Report for the Noble Ellenburg Windpark, Llc, Postconstruction Bird and Bat Fatality Study - 2008. Prepared for Noble Environmental Power, LLC by Curry and Kerlinger, LLC. April 13, 2009.
- Jain, A., P. Kerlinger, R. Curry, L. Slobodnik, J. Histed, and J. Meacham. 2009c. Annual Report for the Noble Clinton Windpark, Llc, Postconstruction Bird and Bat Fatality Study - 2008. Prepared for Noble Environmental Power, LLC by Curry and Kerlinger, LLC. April 13, 2009.
- Jain, A., P. Kerlinger, R. Curry, L. Slobodnik, and M. Lehman. 2009d. Maple Ridge Wind Power Avian and Bat Fatality Study Report - 2008. Annual Report for the Maple Ridge Wind Power Project, Post-construction Bird and Bat Fatality Study - 2008. Prepared for Iberdrola Renewables, Inc, Horizon Energy, and the Technical Advisory Committee (TAC) for the Maple Ridge Project Study. Prepared by Curry and Kerlinger, LLC. May 14, 2009.
- Jain, A., P. Kerlinger, R. Curry, L. Slobodnik, J. Quant, and D. Pursell. 2009e. Annual Report for the Noble Bliss Windpark, Llc, Postconstruction Bird and Bat Fatality Study - 2008. Prepared for Noble Environmental Power, LLC by Curry and Kerlinger, LLC. April 13, 2009.
- Jain, A., P. Kerlinger, L. Slobodnik, R. Curry, A. Fuerst, and A. Harte. 2010a. Annual Report for the Noble Bliss Windpark, Llc: Postconstruction Bird and Bat Fatality Study - 2009. Prepared for Noble

- Environmental Power, LLC. Prepared by Curry and Kerlinger, LLC, Cape May, New Jersey. March 9, 2010.
- Jain, A., P. Kerlinger, L. Slobodnik, R. Curry, and A. Harte. 2011a. Annual Report for the Noble Wethersfield Windpark, Llc: Postconstruction Bird and Bat Fatality Study - 2010. Prepared for Noble Environmental Power, LLC. Prepared by Curry and Kerlinger, LLC, Cape May, New Jersey. January 22, 2011.
- Jain, A., P. Kerlinger, L. Slobodnik, R. Curry, and K. Russell. 2010b. Annual Report for the Noble Clinton Windpark, Llc: Postconstruction Bird and Bat Fatality Study - 2009. Prepared for Noble Environmental Power, LLC. Prepared by Curry and Kerlinger, LLC, Cape May, New Jersey. March 9, 2010.
- Jain, A., P. Kerlinger, L. Slobodnik, R. Curry, and K. Russell. 2010c. Annual Report for the Noble Ellenburg Windpark, Llc: Postconstruction Bird and Bat Fatality Study - 2009. Prepared for Noble Environmental Power, LLC. Prepared by Curry and Kerlinger, LLC, Cape May, New Jersey. March 14, 2010.
- Jain, A., P. Kerlinger, L. Slobodnik, R. Curry, and K. Russell. 2011b. Annual Report for the Noble Altona Windpark, Llc: Postconstruction Bird and Bat Fatality Study - 2010. Prepared for Noble Environmental Power, LLC. Prepared by Curry and Kerlinger, LLC, Cape May, New Jersey. January 22, 2011.
- Jain, A., P. Kerlinger, L. Slobodnik, R. Curry, and K. Russell. 2011c. Annual Report for the Noble Chateaugay Windpark, Llc: Postconstruction Bird and Bat Fatality Study - 2010. Prepared for Noble Environmental Power, LLC. Prepared by Curry and Kerlinger, LLC, Cape May, New Jersey. January 22, 2011.
- Jeffrey, J. D., K. Bay, W. P. Erickson, M. Sonneberg, J. Baker, M. Kesterke, J. R. Boehrs, and A. Palochak. 2009a. Portland General Electric Biglow Canyon Wind Farm Phase I Post-Construction Avian and Bat Monitoring First Annual Report, Sherman County, Oregon. January 2008 - December 2008. Technical report prepared for Portland General Electric Company, Portland, Oregon. Prepared by Western EcoSystems Technology (WEST) Inc., Cheyenne, Wyoming, and Walla Walla, Washington. April 29, 2009.
- Jeffrey, J. D., W. P. Erickson, K. Bay, M. Sonneberg, J. Baker, J. R. Boehrs, and A. Palochak. 2009b. Horizon Wind Energy, Elkhorn Valley Wind Project, Post-Construction Avian and Bat Monitoring, First Annual Report, January-December 2008. Technical report prepared for Telocaset Wind Power Partners, a subsidiary of Horizon Wind Energy, Portland, Oregon. Prepared by Western EcoSystems Technology, Inc., Cheyenne, Wyoming, and Walla Walla, Washington. May 4, 2009.
- Jeffrey, J. D., W. P. Erickson, K. J. Bay, V. K. Poulton, W. L. Tidhar, and J. E. Baker. 2008. Wildlife Baseline Studies for the Golden Hills Wind Resource Area, Sherman County, Oregon. Final Report May 2006 – October 2007. Prepared for BP Alternative Energy North America Inc., Houston, Texas, by Western EcoSystems Technology, Inc. (WEST), Cheyenne, Wyoming.
- Jeffrey, J. D., V. K. Poulton, K. J. Bay, K. F. Flaig, C. C. Roderick, W. P. Erickson, and J. E. Baker. 2007. Wildlife and Habitat Baseline Study for the Proposed Vantage Wind Power Project, Kittitas County, Washington. Final Report. Prepared for Invenergy. Prepared by Western EcoSystems Technology, Inc. (WEST), Cheyenne, Wyoming, and Walla Walla, Washington. August 2007. Available online at: https://www.co.kittitas.wa.us/uploads/cds/land-use/Wind%20Farm/WSA-07-01%20Vantage%20Wind%20%20Power%20Project%20Application/VANTAGE_WILDLIFE_BAS ELINE%20REPORT_8.27.07.pdf

- Johnson, G., W. Erickson, and J. White. 2003. Avian and Bat Mortality During the First Year of Operation at the Klondike Phase I Wind Project, Sherman County, Oregon. Technical report prepared for Northwestern Wind Power, Goldendale, Washington, by Western EcoSystems Technology, Inc. (WEST), Cheyenne, Wyoming. March 2003. <http://www.west-inc.com>
- Johnson, G. D., K. Bay, and J. Eddy. 2009a. Wildlife Baseline Studies for the Dunlap Ranch Wind Resource Area, Carbon and Albany Counties, Wyoming. June 4, 2008 - May 27, 2009. Prepared for CH2M HILL, Englewood, Colorado. Prepared by Western EcoSystems Technology, Inc. (WEST), Cheyenne, Wyoming. July 25, 2009. Available online at: <http://amlportal.state.wy.us/out/downloads/Dunlap%20Addendum4.pdf>
- Johnson, G. D., K. Bay, and J. Eddy. 2009b. Wildlife Baseline Studies for the High Plains Wind Resource Area, Carbon and Albany Counties, Wyoming. Prepared for CH2M HILL. Prepared by Western EcoSystems Technology, Inc. (WEST), Cheyenne, Wyoming.
- Johnson, G. D., W. P. Erickson, K. Bay, and K. Kronner. 2002. Baseline Ecological Studies for the Klondike Wind Project, Sherman County, Oregon. Final report prepared for Northwestern Wind Power, Goldendale, Washington. Prepared by Western EcoSystems Technology, Inc. (WEST) Cheyenne, Wyoming, and Northwest Wildlife Consultants, Inc. (NWC), Pendleton, Oregon. May 29, 2002. Available online at: <http://wind.nrel.gov/public/library/johnson5.pdf>
- Johnson, G. D., W. P. Erickson, M. D. Strickland, M. F. Shepherd, and D. A. Shepherd. 2000a. Final Report: Avian Monitoring Studies at the Buffalo Ridge Wind Resource Area, Minnesota: Results of a 4-Year Study. Final report prepared for Northern States Power Company, Minneapolis, Minnesota, by Western EcoSystems Technology, Inc. (WEST), Cheyenne, Wyoming. September 22, 2000. 212 pp. <http://www.west-inc.com>
- Johnson, G. D., J. Jeffrey, J. Baker, and K. Bay. 2007. Baseline Avian Studies for the Windy Flats Wind Energy Project, Klickitat County, Washington. Prepared for Windy Point Partners, LLC. Prepared by Western EcoSystems Technology, Inc. (WEST), Cheyenne, Wyoming. May 29, 2007. Available online at: <http://www.efsec.wa.gov/Whistling%20Ridge/Adjudication/Cross%20Exhibits/06.06C%20Windy%20Flats-Environmental%20Report%20Excerpt.pdf>
- Johnson, G. D., M. K. Perlik, W. P. Erickson, and M. D. Strickland. 2004. Bat Activity, Composition and Collision Mortality at a Large Wind Plant in Minnesota. *Wildlife Society Bulletin* 32(4): 1278-1288.
- Johnson, G. D., M. Ritzert, S. Nomani, and K. Bay. 2010a. Bird and Bat Fatality Studies, Fowler Ridge I Wind-Energy Facility Benton County, Indiana. Unpublished report prepared for British Petroleum Wind Energy North America Inc. (BPWENA) by Western EcoSystems Technology, Inc. (WEST).
- Johnson, G. D., M. Ritzert, S. Nomani, and K. Bay. 2010b. Bird and Bat Fatality Studies, Fowler Ridge Iii Wind-Energy Facility, Benton County, Indiana. April 2 - June 10, 2009. Prepared for BP Wind Energy North America. Prepared by Western EcoSystems Technology, Inc. (WEST), Cheyenne, Wyoming.
- Johnson, G. D., D. P. Young, W. P. Erickson, C. E. Derby, M. D. Strickland, R. E. Good, and J. W. Kern. 2000b. Final Report: Wildlife Monitoring Studies, Seawest Windpower Project, Carbon County, Wyoming, 1995-1999. Final report prepared for SeaWest Energy Corporation, San Diego, California, and the Bureau of Land Management, Rawlins, Wyoming, by Western EcoSystems Technology, Inc. (WEST), Cheyenne, Wyoming. August 9, 2000.
- Kerlinger, P. 2002a. An Assessment of the Impacts of Green Mountain Power Corporation's Wind Power Facility on Breeding and Migrating Birds in Searsburg, Vermont: July 1996-July 1998. NREL/SR-

- 500-28591. Prepared for Vermont Public Service, Montpelier, Vermont. US Department of Energy, National Renewable Energy Laboratory, Golden, Colorado. March 2002. 95 pp. <http://www.nrel.gov/docs/fy02osti/28591.pdf>
- Kerlinger, P. 2002b. Avian Fatality Study at the Madison Wind Power Project, Madison, New York. Report to PG&E Generating.
- Kerlinger, P., L. Culp, and R. Curry. 2005. Post-Construction Avian Monitoring Study for the High Winds Wind Power Project, Solano County, California. Year One Report. Prepared for High Winds, LLC and FPL Energy.
- Kerlinger, P., R. Curry, L. Culp, A. Hasch, and A. Jain. 2009. Revised Post-Construction Avian Monitoring Study for the Shiloh I Wind Power Project, Solano County, California. Final Report: October 2009. Third Year Report (Revised 2010). Prepared for Iberdrola Renewables, Inc. (IRI). Prepared by Curry and Kerlinger, LLC., McLean, Virginia. Available online at: <https://www.solanocounty.com/civicax/filebank/blobdload.aspx?blobid=8914>
- Kerlinger, P., R. Curry, L. Culp, A. Hasch, and A. Jain. 2010. Post-Construction Avian Monitoring Study for the Shiloh II Wind Power Project, Solano County, California. Year One Report. Prepared for enXco Development Inc. Prepared by Curry and Kerlinger, LLC, McLean, Virginia. September 2010. Available online at: <https://www.solanocounty.com/civicax/filebank/blobdload.aspx?blobid=12118>
- Kerlinger, P., R. Curry, L. Culp, A. Jain, C. Wilkerson, B. Fischer, and A. Hasch. 2006. Post-Construction Avian and Bat Fatality Monitoring Study for the High Winds Wind Power Project, Solano County, California: Two Year Report. Prepared for High Winds LLC, FPL Energy. Prepared by Curry and Kerlinger, LLC, MacLean, Virginia. April 2006. Available online at: <http://www.co.solano.ca.us/civicax/filebank/blobdload.aspx?blobid=8915>
- Kerlinger, P., R. Curry, A. Hasch, and J. Guarnaccia. 2007. Migratory Bird and Bat Monitoring Study at the Crescent Ridge Wind Power Project, Bureau County, Illinois: September 2005 - August 2006. Final draft prepared for Orrick Herrington and Sutcliffe, LLP. May 2007.
- Kerlinger, P., R. Curry, A. Hasch, J. Guarnaccia, and D. Riser-Espinoza. 2013a. Post-Construction Bird and Bat Studies at the Shiloh II Wind Project, Llc, Solano County, California. Final Report. Prepared for EDF Renewable Energy (formerly known as enXco). Prepared by Curry and Kerlinger, LLC, McLean, Virginia. December 2012 (Revised June 2013).
- Kerlinger, P., R. Curry, A. Hasch, J. Guarnaccia, and D. Riser-Espinoza. 2013b. Post-Construction Bird and Bat Studies at the Shiloh III Wind Project, Llc, Solano County, California. Report on Year 1 Results. Prepared for EDF Renewable Energy (formerly known as enXco). Prepared by Curry and Kerlinger, LLC, McLean, Virginia. August 2013.
- Kerlinger, P., J. Guarnaccia, R. Curry, and C. J. Vogel. 2014. Bird and Bat Fatality Study, Heritage Garden I Wind Farm, Delta County, Michigan: 2012-2014. Prepared for Heritage Sustainable Energy, LLC. Prepared by Curry and Kerlinger, LLC, McLean, Virginia. November 2014.
- Kerlinger, P., J. Guarnaccia, L. Slobodnik, and R. Curry. 2011a. A Comparison of Bat Mortality in Farmland and Forested Habitats at the Noble Bliss and Wethersfield Windparks, Wyoming County, New York. Report Prepared for Noble Environmental Power. Report prepared by Curry & Kerlinger, LLC, Cape May Point, New Jersey. November 2011.
- Kerlinger, P., D. S. Reynolds, J. Guarnaccia, L. Slobodnik, and R. Curry. 2011b. An Examination of the Relationship between Bat Abundance and Fatalities at the Noble Altona Windpark, Clinton County, New York. Report prepared for Noble Environmental Power. Report prepared by Curry &

- Kerlinger, LLC, Cape May Point, New Jersey, and North East Ecological Services. December 2011.
- Kerns, J. and P. Kerlinger. 2004. A Study of Bird and Bat Collision Fatalities at the Mountaineer Wind Energy Center, Tucker County, West Virginia: Annual Report for 2003. Prepared for FPL Energy and the Mountaineer Wind Energy Center Technical Review Committee. February 14, 2004. 39 pp. <http://www.wvhighlands.org/Birds/MountaineerFinalAvianRpt-%203-15-04PKJK.pdf>
- Krenz, J. D. and B. R. McMillan. 2000. Final Report: Wind-Turbine Related Bat Mortality in Southwestern Minnesota. Minnesota Department of Natural Resources, St. Paul, Minnesota.
- Kronner, K., B. Gritski, J. Baker, V. Marr, G. D. Johnson, and K. Bay. 2005. Wildlife Baseline Study for the Leaning Juniper Wind Power Project, Gilliam County, Oregon. Prepared for PPM Energy, Portland, Oregon and CH2MHILL, Portland, Oregon by NWC, Pendleton, Oregon, and WEST, Inc., Cheyenne, Wyoming. November 3, 2005.
- Kronner, K., B. Gritski, and S. Downes. 2008. Big Horn Wind Power Project Wildlife Fatality Monitoring Study: 2006–2007. Final report prepared for PPM Energy and the Big Horn Wind Project Technical Advisory Committee by Northwest Wildlife Consultants, Inc. (NWC), Mid-Columbia Field Office, Goldendale, Washington. June 1, 2008.
- Loss, S.R., T. Will, and P. Marra. 2013. Estimates of bird collision mortality at wind facilities in the contiguous United States. *Biological Conservation* (168): 201-209.
- Martin, C., E. Arnett, and M. Wallace. 2013. Evaluating Bird and Bat Post-Construction Impacts at the Sheffield Wind Facility, Vermont: 2012 Annual Report. Prepared for Bat Conservation International and First Wind. Prepared by Department of Natural Resources Management, Texas Tech University, Lubbock, Texas. March 25, 2013.
- Miller, A. 2008. Patterns of Avian and Bat Mortality at a Utility-Scaled Wind Farm on the Southern High Plains. Thesis. Texas Tech University, August 2008.
- Natural Resource Solutions Inc. (NRSI). 2011. Harrow Wind Farm 2010 Post-Construction Monitoring Report. Project No. 0953. Prepared for International Power Canada, Inc., Markham, Ontario. Prepared by NRSI. August 2011.
- New Jersey Audubon Society (NJAS). 2008a. Post-Construction Wildlife Monitoring at the Atlantic City Utilities Authority - Jersey Atlantic Wind Power Facility: Periodic Report Covering Work Conducted between 1 August and 30 September 2008. Submitted to New Jersey Board of Public Utilities, New Jersey Clean Energy Program, Newark, New Jersey. Submitted by New Jersey Audubon Society, Center for Research and Education, Cape May Court House, New Jersey. Available online at:
http://www.njcleanenergy.com/files/file/Renewable_Programs/Wind/ACUA_Interim%20Report_Jan-Sep08_all.pdf
- New Jersey Audubon Society (NJAS). 2008b. Post-Construction Wildlife Monitoring at the Atlantic City Utilities Authority - Jersey Atlantic Wind Power Facility: Periodic Report Covering Work Conducted between 20 July and 31 December 2007. Submitted to New Jersey Board of Public Utilities, New Jersey Clean Energy Program, Newark, New Jersey. Submitted by New Jersey Audubon Society, Center for Research and Education, Cape May Court House, New Jersey. Available online at:
http://www.njcleanenergy.com/files/file/Renewable_Programs/CORE/ACUARreportwithimages123107LowRes.pdf

- New Jersey Audubon Society (NJAS). 2009. Post-Construction Wildlife Monitoring at the Atlantic City Utilities Authority - Jersey Atlantic Wind Power Facility: Project Status Report Iv. Available online at:
http://www.njcleanenergy.com/files/file/Renewable_Programs/Wind/ACUA_Quarterly%20report_t_o-date_Jan-Aug09_1c.pdf
- Nicholson, C. P., J. R.D. Tankersley, J. K. Fiedler, and N. S. Nicholas. 2005. Assessment and Prediction of Bird and Bat Mortality at Wind Energy Facilities in the Southeastern United States. Final Report. Tennessee Valley Authority, Knoxville, Tennessee.
- Normandeau Associates, Inc. 2010. Stetson Mountain li Wind Project Year 1 Post-Construction Avian and Bat Mortality Monitoring Study, T8 R4 Nbpp, Maine. Prepared for First Wind, LLC, Portland, Maine. Prepared by Normandeau Associates, Inc., Falmouth, Maine. December 2, 2010.
- Normandeau Associates, Inc. 2011. Year 3 Post- Construction Avian and Bat Casualty Monitoring at the Stetson I Wind Farm, T8 R4 Nbpp, Maine. Prepared for First Wind Energy, LLC, Portland, Maine. Prepared by Normandeau Associates, Inc., Falmouth, Maine. December 2011.
- North American Datum (NAD). 1983. Nad83 Geodetic Datum.
- Northwest Wildlife Consultants, Inc. (NWC) and Western Ecosystems Technology, Inc. (WEST). 2004. Ecological Baseline Studies for the Roosevelt Wind Project, Klickitat County, Washington. Final Report. Prepared by NWC, Pendleton, Oregon, and WEST, Inc., Cheyenne, Wyoming. September 2004.
- Northwest Wildlife Consultants, Inc. (NWC) and Western Ecosystems Technology, Inc. (WEST). 2005. Ecological Baseline Studies and Wildlife Impact Assessment for the White Creek Wind Power Project, Klickitat County, Washington. Prepared for Last Mile Electric Cooperative, Goldendale, Washington, by Northwest Wildlife Consultants, Inc., Goldendale, Washington, and Western EcoSystems Technology, Inc. (WEST), Cheyenne, Wyoming. January 12, 2005.
- Northwest Wildlife Consultants, Inc. (NWC) and Western EcoSystems Technology, Inc. (WEST). 2007. Avian and Bat Monitoring Report for the Klondike li Wind Power Project. Sherman County, Oregon. Prepared for PPM Energy, Portland, Oregon. Managed and conducted by NWC, Pendleton, Oregon. Analysis conducted by WEST, Cheyenne, Wyoming. July 17, 2007.
- Orloff, S. and A. Flannery. 1992. Wind Turbine Effects on Avian Activity, Habitat Use, and Mortality in Altamont Pass and Solano County Wind Resource Areas, 1989-1991. Final Report P700-92-001 to Alameda, Contra Costa, and Solano Counties, and the California Energy Commission, Sacramento, California, by Biosystems Analysis, Inc., Tiburon, California. March 1992.
- Osborn, R. G., K. F. Higgins, C. D. Dieter, and R. E. Usgaard. 1996. Bat Collisions with Wind Turbines in Southwestern Minnesota. *Bat Research News* 37: 105-108.
- Osborn, R. G., K. F. Higgins, R. E. Usgaard, C. D. Dieter, and R. G. Neiger. 2000. Bird Mortality Associated with Wind Turbines at the Buffalo Ridge Wind Resource Area, Minnesota. *American Midland Naturalist* 143: 41-52.
- Pagel, J. E., K. J. Kritz, B. A. Millsap, R. K. Murphy, E. L. Kershner, and S. Covington. 2013. Bald Eagle and Golden Eagle Mortalities at Wind Energy Facilities in the Contiguous United States. *Journal of Raptor Research* 47(3): 311-315.
- Pardieck, K. L., D. J. Ziolkowski, Jr., M. A. R. Hudson, and K. Campbell. 2015. North American Breeding Bird Survey Dataset 1966 - 2015, Version 2015.0. US Geological Survey, Patuxent Wildlife Research Center. Information available online at: www.pwrc.usgs.gov/BBS/RawData/

- Piorkowski, M. D. and T. J. O'Connell. 2010. Spatial Pattern of Summer Bat Mortality from Collisions with Wind Turbines in Mixed-Grass Prairie. *American Midland Naturalist* 164: 260-269.
- Poulton, V. and W. P. Erickson. 2010. Post-Construction Bat and Bird Fatality Study, Judith Gap Wind Farm, Wheatland County, Montana. Final Report: Results from June–October 2009 Study and Comparison with 2006-2007 Study. Prepared for Judith Gap Energy, LLC. Prepared by Western EcoSystems Technology, Inc. (WEST), Cheyenne, Wyoming. March 2010.
- Public Law (Pub. L.) 93-205. 1973. Endangered Species Act of 1973. Public Law (PL) 93-205; 87 Stat.: 884-902. December 28, 1973.
- Raptor Center. 2015. Raptors of North America. The Raptor Center, University of Minnesota, St. Paul, Minnesota. Species profiles available online at: <https://www.raptor.umn.edu/learn-about-raptors/raptors-north-america>
- Reynolds, R. T., J. M. Scott, and R. A. Nussbaum. 1980. A Variable Circular-Plot Method for Estimating Bird Numbers. *Condor* 82(3): 309-313.
- Sapphos Environmental, Inc. (Sapphos). 2014. Pacific Wind Energy Project: Year I Avian and Bat Fatality Monitoring Report. Prepared for Pacific Wind, LLC, San Diego, California. Prepared by Sapphos, Pasadena, California. September 15, 2014.
- Stantec Consulting, Inc. (Stantec). 2008. 2007 Spring, Summer, and Fall Post-Construction Bird and Bat Mortality Study at the Mars Hill Wind Farm, Maine. Prepared for UPC Wind Management, LLC, Cumberland, Maine. Prepared by Stantec (formerly Woodlot Alternatives, Inc.), Topsham, Maine. January 2008.
- Stantec Consulting, Inc. (Stantec). 2009a. Post-Construction Monitoring at the Mars Hill Wind Farm, Maine - Year 2, 2008. Prepared for First Wind Management, LLC, Portland, Maine. Prepared by Stantec Consulting, Topsham, Maine. January 2009.
- Stantec Consulting, Inc. (Stantec). 2009b. Post-Construction Monitoring at the Munnsville Wind Farm, New York: 2008. Prepared for E.ON Climate and Renewables, Austin, Texas. Prepared by Stantec Consulting, Topsham, Maine. January 2009.
- Stantec Consulting, Inc. (Stantec). 2009c. Stetson I Mountain Wind Project: Year 1 Post-Construction Monitoring Report, 2009 for the Stetson Mountain Wind Project in Penobscot and Washington Counties, Maine. Prepared for First Wind Management, LLC. Portland, Maine. Prepared by Stantec, Topsham, Maine. December 2009.
- Stantec Consulting, Inc. (Stantec). 2010. Cohocton and Dutch Hill Wind Farms Year 1 Post-Construction Monitoring Report, 2009, for the Cohocton and Dutch Hill Wind Farms in Cohocton, New York. Prepared for Canandaigua Power Partners, LLC and Canandaigua Power Partners II, LLC, Portland, Maine. Prepared by Stantec, Topsham, Maine. January 2010.
- Stantec Consulting, Inc. (Stantec). 2011a. Cohocton and Dutch Hill Wind Farms Year 2 Post-Construction Monitoring Report, 2010, for the Cohocton and Dutch Hill Wind Farms in Cohocton, New York. Prepared for Canandaigua Power Partners, LLC, and Canandaigua Power Partners II, LLC, Portland, Maine. Prepared by Stantec, Topsham, Maine. October 2011.
- Stantec Consulting, Inc. (Stantec). 2011b. Post-Construction Monitoring 2010 Final Annual Report – Year 1, Milford Wind Corridor Phase I, Milford, Utah. Prepared for First Wind Management, LLC, Portland, Maine. Prepared by Stantec, Topsham, Maine. August 2011.

- Stantec Consulting, Inc. (Stantec). 2012a. 2011 Post-Construction Monitoring Report, Kibby Wind Power Project, Franklin County, Maine. Prepared for TransCanada Hydro Northeast, Inc., North Walpole, New Hampshire. Prepared by Stantec, Topsham, Maine. March 2012.
- Stantec Consulting, Inc. (Stantec). 2012b. Post-Construction Monitoring 2011 - 2012, Milford Wind Corridor Phase I and II, Milford, Utah. Prepared for First Wind Management, LLC, Portland, Maine. Prepared by Stantec, Topsham, Maine. May 2012.
- Stantec Consulting, Inc. (Stantec). 2013a. Palouse Wind Post-Construction Wildlife Monitoring Report, 2012-2013. Prepared for Palouse Wind, Whitman County, Washington. Prepared by Stantec, Topsham, Maine. December 2013.
- Stantec Consulting, Inc. (Stantec). 2013b. Record Hill Wind Project Post-Construction Monitoring Report, 2012. Prepared for Record Hill Wind LLC, Lyme, New Hampshire. Prepared by Stantec, Topsham, Maine. March 2013. Available online at:
http://www.maine.gov/dep/ftp/WindPowerProjectFiles/PostConstructionMonitoring/RH%202012%20PCM%20Report_031313.pdf
- Stantec Consulting, Inc. (Stantec). 2013c. Rollins Wind Project Post-Construction Monitoring Report, 2012. Prepared for First Wind, Portland, Maine. Prepared by Stantec, Topsham, Maine. March 2013.
- Stantec Consulting, Inc. (Stantec). 2013d. Steel Winds I and II Post-Construction Monitoring Report, 2012, Lackwanna and Hamburg, New York. Prepared for First Wind Management, LLC, Portland, Maine. Prepared by Stantec, Topsham, Maine. April 2013.
- Stantec Consulting, Inc. (Stantec). 2013e. Stetson II Wind Project Post-Construction Monitoring Report, 2012. Prepared for First Wind, Portland, Maine. Prepared by Stantec, Topsham, Maine. March 2013.
- Stantec Consulting, Inc. (Stantec). 2014. Stetson I Wind Project 2013 Post-Construction Wildlife Monitoring Report, Year 5. Stetson I Wind Project, Washington County, Maine. Prepared for First Wind, Portland, Maine. Prepared by Stantec, Topsham, Maine. February 2014.
- Stantec Consulting, Inc. (Stantec). 2015. Record Hill Wind Project Year 2 Post-Construction Wildlife Monitoring Report, 2014. Prepared for Record Hill Wind LLC and Wagner Forest Management, Ltd., Lyme, New Hampshire. Prepared by Stantec Consulting, Topsham, Maine. March 2015.
- Stantec Consulting Ltd. (Stantec Ltd.). 2008. Melancthon I Wind Plant Post-Construction Bird and Bat Monitoring Report: 2007. File No. 160960220. Prepared for Canadian Hydro Developers, Inc., Guelph, Ontario. Prepared by Stantec Ltd., Guelph, Ontario. June 2008.
- Stantec Consulting Ltd. (Stantec Ltd.). 2010a. Wolfe Island Ecopower Centre Post-Construction Followup Plan. Bird and Bat Resources Monitoring Report No. 1: May - June 2009. File No. 160960494. Prepared for Canadian Hydro Developers, Inc.'s wholly owned subsidiary, Canadian Renewable Energy Corporation. Prepared by Stantec Ltd., Guelph, Ontario. February 2010.
- Stantec Consulting Ltd. (Stantec Ltd.). 2010b. Wolfe Island Ecopower Centre Post-Construction Followup Plan. Bird and Bat Resources Monitoring Report No. 2: July - December 2009. File No. 160960494. Prepared for TransAlta Corporation's wholly owned subsidiary, Canadian Renewable Energy Corporation. Prepared by Stantec Ltd., Guelph, Ontario. May 2010.
- Stantec Consulting Ltd. (Stantec Ltd.). 2011a. Wolfe Island Wind Plant Post-Construction Followup Plan. Bird and Bat Resources Monitoring Report No. 3: January - June 2010. File No. 160960494.

- Prepared for TransAlta Corporation's wholly owned subsidiary, Canadian Renewable Energy Corporation. Prepared by Stantec Consulting Ltd., Guelph, Ontario. January 2011.
- Stantec Consulting Ltd. (Stantec Ltd.). 2011b. Wolfe Island Wind Plant Post-Construction Followup Plan. Bird and Bat Resources Monitoring Report No. 4: July - December 2010. File No. 160960494. Prepared for TransAlta Corporation's wholly owned subsidiary, Canadian Renewable Energy Corporation. Prepared by Stantec Consulting Ltd., Guelph, Ontario. July 2011.
- Stantec Consulting Ltd. (Stantec Ltd.). 2011c. Wolfe Island Wind Plant Post-Construction Followup Plan. Bird and Bat Resources Monitoring Report No. 5: January - June 2011. File No. 160960494. Prepared for TransAlta Corporation's wholly owned subsidiary, Canadian Renewable Energy Corporation. Prepared by Stantec Consulting Ltd., Guelph, Ontario. December 2011.
- Stantec Consulting Ltd. (Stantec Ltd.). 2012. Wolfe Island Wind Plant Post-Construction Follow-up Plan. Bird and Bat Resources Monitoring Report No. 6: July-December 2011. File No. 160960494. Prepared for TransAlta Corporation's wholly owned subsidiary, Canadian Renewable Energy Corporation. Prepared by Stantec Consulting Ltd., Guelph, Ontario. July 2012.
- Stantec Consulting Ltd. (Stantec Ltd.). 2014. Wolfe Island Wind Plant Post-Construction Follow-up Plan. Bird and Bat Resources Monitoring Report No. 7: January - June 2012. File No. 160960494. Prepared for TransAlta Corporation's wholly owned subsidiary, Canadian Renewable Energy Corporation. Prepared by Stantec Consulting Ltd., Guelph, Ontario. April 2014. Available online at:
http://www.transalta.com/sites/default/files/WolfelIsland_TransAlta_PostConstruction_BirdBat_Report_7.pdf
- Stantec Consulting Services, Inc. (Stantec Consulting). 2012. Post-Construction Monitoring, Summer 2011 - Spring 2012. Year 1 Annual Report. Kittitas Valley Wind Power Project, Cle Elum, Washington. Prepared for Sagebrush Power Partners, LLC, Houston, Texas. Prepared by Stantec Consulting, Salt Lake City, Utah.
- Stantec Consulting Services, Inc. (Stantec Consulting). 2013. Kittitas Valley Wind Power Project, Cle Elum, Washington. Post-Construction Monitoring: Summer 2012 - Spring 2013. Year 2 Annual Report. Prepared for Sagebrush Power Partners LLC, Houston Texas. Prepared by Stantec Consulting, Salt Lake City, Utah.
- Tetra Tech. 2013. Spruce Mountain Wind Project Post-Construction Bird and Bat Fatality and Raptor Monitoring: Year 1 Annual Report. Prepared for Patriot Renewables. Prepared by Tetra Tech, Portland, Maine. May 2013.
- Thompson, J. and K. Bay. 2012. Post-Construction Fatality Surveys for the Dry Lake li Wind Project: February 2011 – February 2012. Prepared for Iberdrola Renewables, LLC, Portland, Oregon. Prepared by Western Ecosystems Technology, Inc. (WEST), Cheyenne, Wyoming. June 6, 2012.
- Thompson, J., D. Solick, and K. Bay. 2011. Post-Construction Fatality Surveys for the Dry Lake Phase I Wind Project. Iberdrola Renewables: September 2009 - November 2010. Prepared for Iberdrola Renewables, Portland, Oregon. Prepared by Western Ecosystems Technology, Inc. (WEST), Cheyenne, Wyoming. February 10, 2011.
- Tidhar, D., L. McManus, Z. Courage, and W. L. Tidhar. 2012a. 2010 Post-Construction Fatality Monitoring Study and Bat Acoustic Study for the High Sheldon Wind Farm, Wyoming County, New York. Final Report: April 15 - November 15, 2010. Prepared for High Sheldon Wind Farm, Sheldon Energy LLC, Chicago, Illinois. Prepared by Western EcoSystems Technology, Inc. (WEST), Waterbury, Vermont. April 15, 2012.

- Tidhar, D., L. McManus, D. Solick, Z. Courage, and K. Bay. 2012b. 2011 Post-Construction Fatality Monitoring Study and Bat Acoustic Study for the High Sheldon Wind Farm, Wyoming County, New York. Final Report: April 15 - November 15, 2011. Prepared for High Sheldon Wind Farm, Sheldon Energy LLC, Chicago, Illinois. Prepared by Western EcoSystems Technology, Inc. (WEST), Waterbury, Vermont. April 25, 2012.
- Tidhar, D., J. Ritzert, M. Sonnenberg, M. Lout, and K. Bay. 2013a. 2012 Post-Construction Fatality Monitoring Study for the Maple Ridge Wind Farm, Lewis County, New York. Final Report: July 12 - October 15, 2012. Prepared for EDP Renewables North, Houston, Texas. Prepared by Western EcoSystems Technology, Inc. (WEST), NE/Mid-Atlantic Branch, Waterbury, Vermont. February 12, 2013.
- Tidhar, D., M. Sonnenberg, and D.P. Young, Jr. 2013b. 2012 Post-Construction Carcass Monitoring Study for the Beech Ridge Wind Farm, Greenbrier County, West Virginia. Final Report: April 1 - October 28, 2012. Prepared for Beech Ridge Wind Farm, Beech Ridge Energy, LLC, Chicago, Illinois. Prepared by Western EcoSystems Technology, Inc. (WEST), NE/Mid-Atlantic Branch, Waterbury, Vermont. January 18, 2013.
- Tidhar, D., W. Tidhar, and M. Sonnenberg. 2010. Post-Construction Fatality Surveys for Lempster Wind Project, Iberdrola Renewables. Prepared for Lempster Wind, Llc, Lempster Wind Technical Advisory Committee, and Iberdrola Renewables, Inc. Prepared by Western EcoSystems Technology Inc. (WEST), Waterbury, Vermont. September 30, 2010.
- Tidhar, D., W. L. Tidhar, L. McManus, and Z. Courage. 2011. 2010 Post-Construction Fatality Surveys for the Lempster Wind Project, Lempster, New Hampshire. Prepared for Iberdrola Renewables, Inc. and the Lempster Wind Technical Committee. Prepared by Western EcoSystems Technology, Inc., Waterbury, Vermont. May 18, 2011.
- Tierney, R. 2007. Buffalo Gap I Wind Farm Avian Mortality Study: February 2006-January 2007. Final Survey Report. Prepared for AES SeaWest, Inc. TRC, Albuquerque, New Mexico. TRC Report No. 110766-C-01. May 2007.
- Tierney, R. 2009. Buffalo Gap 2 Wind Farm Avian Mortality Study: July 2007 - December 2008. Final Survey Report. Submitted by TRC, Albuquerque, New Mexico. TRC Report No. 151143-B-01. June 2009.
- TRC Environmental Corporation. 2008. Post-Construction Avian and Bat Fatality Monitoring and Grassland Bird Displacement Surveys at the Judith Gap Wind Energy Project, Wheatland County, Montana. Prepared for Judith Gap Energy, LLC, Chicago, Illinois. TRC Environmental Corporation, Laramie, Wyoming. TRC Project 51883-01 (112416). January 2008. <http://www.newwest.net/pdfs/AvianBatFatalityMonitoring.pdf>
- URS Corporation. 2010a. Final Goodnoe Hills Wind Project Avian Mortality Monitoring Report. Prepared for PacifiCorp, Salt Lake City, Utah. Prepared by URS Corporation, Seattle, Washington. March 16, 2010.
- URS Corporation. 2010b. Final Marengo I Wind Project Year One Avian Mortality Monitoring Report. Prepared for PacifiCorp, Salt Lake City, Utah. Prepared by URS Corporation, Seattle, Washington. March 22, 2010.
- URS Corporation. 2010c. Final Marengo II Wind Project Year One Avian Mortality Monitoring Report. Prepared for PacifiCorp, Salt Lake City, Utah. Prepared by URS Corporation, Seattle, Washington. March 22, 2010.

- URS Corporation, Western EcoSystems Technology, Inc. (WEST), and Northwest Wildlife Consultants, Inc. (NWC). 2001. Avian Baseline Study for the Stateline Project. Prepared for FPL Energy Vansycle, LLC, Juno Beach, Florida.
- US Department of Agriculture (USDA). 2014. Imagery Programs - National Agriculture Imagery Program (Naip). USDA - Farm Service Agency (FSA). Aerial Photography Field Office (APFO), Salt Lake City, Utah. Last updated September 2014. Information available online at: <http://www.fsa.usda.gov/programs-and-services/aerial-photography/imagery-programs/index>
- US Fish and Wildlife Service (USFWS). 2011. Golden Eagles Status Fact Sheet. February 2011. Available online at: <https://www.fws.gov/birds/management/managed-species/eagle-management.php>
- US Fish and Wildlife Service (USFWS). 2012. Land-Based Wind Energy Guidelines. March 23, 2012. 82 pp. Available online at: http://www.fws.gov/cno/pdf/Energy/2012_Wind_Energy_Guidelines_final.pdf
- US Fish and Wildlife Service (USFWS). 2013. Eagle Conservation Plan Guidance: Module 1 - Land-Based Wind Energy, Version 2. US Department of the Interior, Fish and Wildlife Service, Division of Migratory Bird Management. April 2013. Executive Summary and frontmatter + 103 pp. Available online at: <https://www.fws.gov/migratorybirds/pdf/management/eagleconservationplanguidance.pdf>
- US Geological Survey (USGS). 2016. The National Map/Us Topo. Last updated January 2016. Homepage available at: <http://nationalmap.gov/ustopo/index.html>
- US Fish and Wildlife Service (USFWS). 2016a. Using Incidental Finds to Update Collision Risk Models at Wind Farms. Poster session presented at the Annual Convention of National Wind Coordinating Collaborative, Broomfield, Colorado.
- US Fish and Wildlife Service (USFWS). 2016b. Index of Species Information: Aquila chrysaetos.. Available Online at: <http://www.fs.fed.us/database/feis/animals/bird/aqch/all.html>. Accessed December 1, 2016.
- US Fish and Wildlife Service (USFWS). 2016c. Sandhill Crane Facts. Available Online at: https://www.fws.gov/uploadedFiles/Region_5/NWRS/Central_Zone/Montezuma/SandhillCraneFacts.pdf Accessed December 1, 2016.
- US Fish and Wildlife Service (USFWS). 2018. Bald Eagle Mortalities and Injuries at Wind Energy Facilities in the United States. Poster. The Wildlife Society 25th Annual Conference, Cleveland, Ohio. October 7 - 11, 2018. Information online: <http://twconference.org/>
- US Geological Survey (USGS) National Land Cover Database (NLCD). 2011. National Land Cover Database 2011 (Nlcd 2011). Multi-Resolution Land Characteristics Consortium (MRLC), National Land Cover Database (NLCD). USGS Earth Resources Observation and Science (EROS) Center, Sioux Falls, South Dakota. Information available online at: <http://www.mrlc.gov/nlcd2011.php>; Legend information available at: http://www.mrlc.gov/nlcd11_leg.php
- Ventus Environmental Solutions (Ventus). 2012. Vantage Wind Energy Center Avian and Bat Monitoring Study: March 2011- March 2012. Prepared for Vantage Wind Energy, LLC, Chicago, Illinois. Prepared by Ventus, Portland, Oregon. May 16, 2012.
- Western Ecosystems Technology, Inc. (WEST). 2005a. Ecological Baseline Study at the Elkhorn Wind Power Project. Exhibit A. Final report prepared for Zilkha Renewable Energy, LLC., Portland, Oregon, by WEST, Cheyenne, Wyoming. June 2005.

- Western EcoSystems Technology, Inc. (WEST). 2005b. Ecological Baseline Study for the Proposed Reardan Wind Project, Lincoln County, Washington. Draft Final Report. Prepared for Energy Northwest, Richland, Washington, by Western EcoSystems Technology, Inc. (WEST), Cheyenne, Wyoming. June 2005.
- Western EcoSystems Technology, Inc. (WEST). 2005c. Wildlife and Habitat Baseline Study for the Proposed Biglow Canyon Wind Power Project, Sherman County, Oregon. March 2004 - August 2005. Prepared for Orion Energy LLC., Oakland, California. WEST, Cheyenne, Wyoming. October, 2005.
- Western EcoSystems Technology, Inc. (WEST). 2006. Diablo Winds Wildlife Monitoring Progress Report, March 2005 - February 2006. Technical report submitted to FPL Energy and Alameda County California. WEST. Cheyenne, Wyoming.
- Western EcoSystems Technology, Inc. (WEST). 2008. Diablo Winds Wildlife Monitoring Progress Report: March 2005 – February 2007. Prepared by WEST, Cheyenne, Wyoming. August 2008.
- Western EcoSystems Technology, Inc. (WEST). 2009. Wildlife Baseline Studies for the Antelope Ridge Wind Resource Area, Union County, Oregon. August 28, 2008 - August 12, 2009. Draft final report prepared for Horizon Wind Energy, Houston, Texas. Prepared by WEST, Cheyenne, Wyoming.
- Western EcoSystems Technology, Inc. (WEST). 2011. Post-Construction Fatality Surveys for the Barton Chapel Wind Project: Iberdrola Renewables. Version: July 2011. Iberdrola Renewables, Portland, Oregon.
- Western EcoSystems Technology, Inc. (WEST) and the Colorado Plateau Research Station (CPRS). 2006. Avian Studies for the Proposed Sunshine Wind Park, Coconino County, Arizona. Prepared for Sunshine Arizona Wind Energy, LLC., Flagstaff, Arizona, by WEST, Cheyenne, Wyoming, and the CPRS. Ecological Monitoring and Assessment Program, Northern Arizona University, Flagstaff, Arizona. May 2006.
- Whitfield, D. P. and M. Madders. 2005. Flight Height in the Hen Harrier *Circus Cyaneus* and Its Incorporation in Wind Turbine Collision Risk Modelling. October 2005. Natural Research Information Note 2. Natural Research Ltd., Banchory, United Kingdom.
- Young, D.P., Jr., K. Bay, S. Nomani, and W. Tidhar. 2009a. Nedpower Mount Storm Wind Energy Facility, Post-Construction Avian and Bat Monitoring: March - June 2009. Prepared for NedPower Mount Storm, LLC, Houston, Texas. Prepared by Western EcoSystems Technology (WEST), Inc., Cheyenne, Wyoming. August 17, 2009.
- Young, D.P., Jr., K. Bay, S. Nomani, and W. Tidhar. 2010a. Nedpower Mount Storm Wind Energy Facility, Post-Construction Avian and Bat Monitoring: April - July 2010. Prepared for NedPower Mount Storm, LLC, Houston, Texas. Prepared by Western EcoSystems Technology, Inc. (WEST), Cheyenne, Wyoming. August 27, 2010.
- Young, D.P., Jr., K. Bay, S. Nomani, and W. Tidhar. 2010b. Nedpower Mount Storm Wind Energy Facility, Post-Construction Avian and Bat Monitoring: July - October 2009. Prepared for NedPower Mount Storm, LLC, Houston, Texas. Prepared by Western EcoSystems Technology (WEST), Inc., Cheyenne, Wyoming. February 12, 2010.
- Young, D.P., Jr., W. P. Erickson, K. Bay, and R. Good. 2002. Baseline Avian Studies for the Proposed Maiden Wind Farm, Yakima and Benton Counties, Washington. Final Report, April 2001-April 2002. Prepared for Bonneville Power Administration, Portland, Oregon. Prepared by Western EcoSystems Technology, Inc. (WEST), Cheyenne, Wyoming, and Northwest Wildlife Consultants,

- Inc. (NWC), Pendleton, Oregon. November 20, 2002. Available online at: http://west-inc.com/reports/maiden_final_technical.pdf
- Young, D.P., Jr., W. P. Erickson, K. Bay, J. Jeffrey, E. G. Lack, R. E. Good, and H. H. Sawyer. 2003a. Baseline Avian Studies for the Proposed Hopkins Ridge Wind Project, Columbia County, Washington. Final Report: March 2002 - March 2003. Prepared for RES North America, LLC, Portland, Oregon. Prepared by Western EcoSystems Technology, Inc. (WEST), Cheyenne, Wyoming. April 30, 2003. Available online at: <http://wind.nrel.gov/public/library/young5.pdf>
- Young, D.P., Jr., W. P. Erickson, K. Bay, J. Jeffrey, E. G. Lack, and H. H. Sawyer. 2003b. Baseline Avian Studies for the Proposed Desert Claim Wind Power Project, Kittitas County, Washington. Final Report. Prepared for Desert Claim Wind Power, LLC, Ellensburg, Washington, by Western EcoSystems Technology, Inc. (WEST), Cheyenne, Wyoming. July 2003.
- Young, D.P., Jr., W. P. Erickson, K. Bay, S. Nomani, and W. Tidhar. 2009b. Mount Storm Wind Energy Facility, Phase 1 Post-Construction Avian and Bat Monitoring, July - October 2008. Prepared for NedPower Mount Storm, LLC, Houston, Texas. Prepared by Western EcoSystems Technology (WEST), Inc., Cheyenne, Wyoming. February 17, 2009.
- Young, D.P., Jr., W. P. Erickson, R. E. Good, M. D. Strickland, and G. D. Johnson. 2003c. Avian and Bat Mortality Associated with the Initial Phase of the Foote Creek Rim Windpower Project, Carbon County, Wyoming, Final Report, November 1998 - June 2002. Prepared for Pacificorp, Inc. Portland, Oregon, SeaWest Windpower Inc. San Diego, California, and Bureau of Land Management, Rawlins District Office, Rawlins, Wyoming. January 10, 2003. Available online at: http://west-inc.com/reports/fcr_final_mortality.pdf
- Young, D.P., Jr., W. P. Erickson, J. Jeffrey, K. Bay, R. E. Good, and E. G. Lack. 2003d. Avian and Sensitive Species Baseline Study Plan and Final Report. Eurus Combine Hills Turbine Ranch, Umatilla County, Oregon. Technical report prepared for Eurus Energy America Corporation, San Diego, California and Aeropower Services, Inc., Portland, Oregon, by Western EcoSystems Technology, Inc. (WEST), Cheyenne, Wyoming. March 10, 2003.
- Young, D.P., Jr., W. P. Erickson, J. Jeffrey, and V. K. Poulton. 2007a. Puget Sound Energy Hopkins Ridge Wind Project Phase 1 Post-Construction Avian and Bat Monitoring First Annual Report, January - December 2006. Technical report for Puget Sound Energy, Dayton, Washington and Hopkins Ridge Wind Project Technical Advisory Committee, Columbia County, Washington. Western EcoSystems Technology, Inc. (WEST) Cheyenne, Wyoming, and Walla Walla, Washington. 25 pp.
- Young, D.P., Jr., J. Jeffrey, W. P. Erickson, K. Bay, V. K. Poulton, K. Kronner, R. Gritski, and J. Baker. 2006. Eurus Combine Hills Turbine Ranch. Phase 1 Post Construction Wildlife Monitoring First Annual Report: February 2004 - February 2005. Technical report prepared for Eurus Energy America Corporation, San Diego, California, and the Combine Hills Technical Advisory Committee, Umatilla County, Oregon. Prepared by Western EcoSystems Technology, Inc. (WEST), Cheyenne, Wyoming, and Walla Walla Washington, and Northwest Wildlife Consultants, Inc. (NWC), Pendleton, Oregon. February 21, 2006. Available online at: <http://wind.nrel.gov/public/library/young7.pdf>
- Young, D.P., Jr., J. D. Jeffrey, K. Bay, and W. P. Erickson. 2009c. Puget Sound Energy Hopkins Ridge Wind Project, Phase 1, Columbia County, Washington. Post-Construction Avian and Bat Monitoring, Second Annual Report: January - December, 2008. Prepared for Puget Sound Energy, Dayton, Washington, and the Hopkins Ridge Wind Project Technical Advisory

- Committee, Columbia County, Washington. Prepared by Western EcoSystems Technology, Inc. (WEST), Cheyenne, Wyoming, and Walla Walla, Washington. May 20, 2009.
- Young, D.P., Jr., G. D. Johnson, V. K. Poulton, and K. Bay. 2007b. Ecological Baseline Studies for the Hatchet Ridge Wind Energy Project, Shasta County, California. Prepared for Hatchet Ridge Wind, LLC, Portland, Oregon. Prepared by Western EcoSystems Technology, Inc. (WEST), Cheyenne, Wyoming. August 31, 2007. Available online from: <https://nrm.dfg.ca.gov/FileHandler.ashx?DocumentVersionID=41939>
- Young, D.P., Jr., M. Kauffman, M. Lout, and K. Bay. 2014a. 2013 Post-Construction Monitoring Study, Criterion Wind Project, Garrett County, Maryland. April - November 2013. Prepared for Criterion Power Partners, LLC, Oakland, Maryland. Prepared by Western EcoSystems Technology, Inc. (WEST), Cheyenne, Wyoming, and Waterbury, Vermont. February 18, 2014.
- Young, D.P., Jr., M. Lout, Z. Courage, S. Nomani, and K. Bay. 2012a. 2011 Post-Construction Monitoring Study, Criterion Wind Project, Garrett County, Maryland: April - November 2011. Prepared for Criterion Power Partners, LLC, Oakland, Maryland. Prepared by Western EcoSystems Technology, Inc. (WEST), Cheyenne, Wyoming, and Waterbury, Vermont. April 20, 2012. Revised November 25, 2013.
- Young, D.P., Jr., M. Lout, L. McManus, and K. Bay. 2014b. 2013 Post-Construction Monitoring Study, Beech Ridge Wind Energy Project, Greenbrier and Nicholas Counties, West Virginia. Final Report: April 1 - November 15, 2013. Prepared for Beech Ridge Energy, LLC, Chicago, Illinois. Prepared by Western EcoSystems Technology, Inc. (WEST), Cheyenne, Wyoming, and Burlington, Vermont. January 28, 2014.
- Young, D.P., Jr., C. Nations, M. Lout, and K. Bay. 2013. 2012 Post-Construction Monitoring Study, Criterion Wind Project, Garrett County, Maryland. April - November 2012. Prepared for Criterion Power Partners, LLC, Oakland, Maryland. Prepared by Western EcoSystems Technology, Inc. (WEST), Cheyenne, Wyoming, and Waterbury, Vermont. January 15, 2013.
- Young, D.P., Jr., S. Nomani, Z. Courage, and K. Bay. 2011a. Nedpower Mount Storm Wind Energy Facility, Post-Construction Avian and Bat Monitoring: April - July 2011. Prepared for NedPower Mount Storm, LLC, Houston, Texas. Prepared by Western EcoSystems Technology (WEST), Inc., Cheyenne, Wyoming. August 29, 2011.
- Young, D.P., Jr., S. Nomani, Z. Courage, and K. Bay. 2012b. Nedpower Mount Storm Wind Energy Facility, Post-Construction Avian and Bat Monitoring: July - October 2011. Prepared for NedPower Mount Storm, LLC, Houston, Texas. Prepared by Western EcoSystems Technology (WEST), Inc., Cheyenne, Wyoming. February 27, 2012.
- Young, D.P., Jr., S. Nomani, W. Tidhar, and K. Bay. 2011b. Nedpower Mount Storm Wind Energy Facility, Post-Construction Avian and Bat Monitoring: July - October 2010. Prepared for NedPower Mount Storm, LLC, Houston, Texas. Prepared by Western EcoSystems Technology (WEST), Inc., Cheyenne, Wyoming. February 10, 2011.
- Young, D.P., Jr., V. K. Poulton, and K. Bay. 2007c. Ecological Baseline Studies Report. Proposed Dry Lake Wind Project, Navajo County, Arizona. Prepared for PPM Energy, Portland, Oregon. Prepared by Western EcoSystems Technology, Inc. (WEST), Cheyenne, Wyoming. July 1, 2007. Available online at: http://www.blm.gov/style/medialib/blm/az/pdfs/energy/dry-lake.Par.83529.File.dat/AppC-eco_baseline_study.pdf

Appendix A. Descriptive Statistics for the Species Recorded During the 10-minute Fixed-Point Count Small Bird Use Surveys Conducted at the Big Blue River Wind Project in Henry County, Indiana, from December 3, 2015 to November 29, 2016

Appendix A. Summary¹ of individual and group observations for all seasons by species and bird type for 10-minute fixed-point count small bird use surveys conducted at the Big Blue River Wind Project from December 3, 2015 to November 29, 2016.

Bird Species	Scientific Name	Spring		Summer		Fall		Winter		Overall	
		# grps	# obs	# grps	# obs	# grps	# obs	# grps	# obs	# grps	# obs
Waterbirds		0	0	4	4	1	1	1	1	6	6
great blue heron	<i>Ardea herodias</i>	0	0	4	4	1	1	1	1	6	6
Waterfowl		4	7	7	9	5	89	11	105	27	210
Canada goose	<i>Branta canadensis</i>	3	4	5	6	3	83	9	100	20	193
mallard	<i>Anas platyrhynchos</i>	0	0	2	3	0	0	0	0	2	3
unidentified duck	NA	0	0	0	0	2	6	2	5	4	11
wood duck	<i>Aix sponsa</i>	1	3	0	0	0	0	0	0	1	3
Shorebirds		42	71	57	62	34	55	4	4	137	192
American woodcock	<i>Scolopax minor</i>	1	2	0	0	0	0	0	0	1	2
killdeer	<i>Charadrius vociferus</i>	40	48	57	62	34	55	4	4	135	169
unidentified sandpiper	NA	1	21	0	0	0	0	0	0	1	21
Diurnal Raptors		3	3	12	12	13	13	5	5	33	33
<i>Accipiters</i>		1	1	3	3	2	2	1	1	7	7
Cooper's hawk	<i>Accipiter cooperii</i>	1	1	3	3	1	1	1	1	6	6
unidentified accipiter	<i>Accipiter spp</i>	0	0	0	0	1	1	0	0	1	1
<i>Buteos</i>		0	0	8	8	6	6	3	3	17	17
red-shouldered hawk	<i>Buteo lineatus</i>	0	0	0	0	1	1	0	0	1	1
red-tailed hawk	<i>Buteo jamaicensis</i>	0	0	8	8	5	5	2	2	15	15
unidentified buteo	<i>Buteo sp</i>	0	0	0	0	0	0	1	1	1	1
<i>Northern Harrier</i>		1	1	0	0	2	2	0	0	3	3
northern harrier	<i>Circus cyaneus</i>	1	1	0	0	2	2	0	0	3	3
<i>Eagles</i>		1	1	0	0	0	0	0	0	1	1
bald eagle	<i>Haliaeetus leucocephalus</i>	1	1	0	0	0	0	0	0	1	1
<i>Falcons</i>		0	0	1	1	3	3	1	1	5	5
American kestrel	<i>Falco sparverius</i>	0	0	1	1	3	3	1	1	5	5
<i>Vultures</i>		2	2	0	0	6	6	0	0	8	8
turkey vulture	<i>Cathartes aura</i>	2	2	0	0	6	6	0	0	8	8
<i>Upland Game Birds</i>		0	0	5	5	0	0	0	0	5	5
northern bobwhite	<i>Colinus virginianus</i>	0	0	5	5	0	0	0	0	5	5
<i>Doves/Pigeons</i>		17	25	55	86	12	51	8	24	92	186
mourning dove	<i>Zenaida macroura</i>	16	24	51	64	8	24	8	24	83	136
rock pigeon	<i>Columba livia</i>	1	1	4	22	4	27	0	0	9	50
<i>Large Corvids</i>		37	38	61	63	59	65	52	65	209	231
American crow	<i>Corvus brachyrhynchos</i>	37	38	61	63	59	65	52	65	209	231
<i>Cuckoos</i>		0	0	3	3	0	0	0	0	3	3
yellow-billed cuckoo	<i>Coccyzus americanus</i>	0	0	3	3	0	0	0	0	3	3

Appendix A. Summary¹ of individual and group observations for all seasons by species and bird type for 10-minute fixed-point count small bird use surveys conducted at the Big Blue River Wind Project from December 3, 2015 to November 29, 2016.

Bird Species	Scientific Name	Spring		Summer		Fall		Winter		Overall	
		# grps	# obs	# grps	# obs	# grps	# obs	# grps	# obs	# grps	# obs
<i>Passerines</i>		300	442	846	1506	254	1754	166	875	1566	4577
American goldfinch	<i>Spinus tristis</i>	8	8	56	61	22	25	3	3	89	97
American redstart	<i>Setophaga ruticilla</i>	0	0	1	1	0	0	0	0	1	1
American robin	<i>Turdus migratorius</i>	41	61	86	113	18	42	12	20	157	236
American tree sparrow	<i>Spizella arborea</i>	0	0	0	0	1	1	1	10	2	11
Baltimore oriole	<i>Icterus galbula</i>	0	0	1	1	0	0	0	0	1	1
barn swallow	<i>Hirundo rustica</i>	3	3	33	43	2	7	0	0	38	53
black-capped chickadee	<i>Poecile atricapilla</i>	0	0	1	1	0	0	0	0	1	1
black-throated blue warbler	<i>Setophaga caerulescens</i>	0	0	0	0	1	1	0	0	1	1
blue jay	<i>Cyanocitta cristata</i>	12	23	36	36	37	67	16	21	101	147
brown-headed cowbird	<i>Molothrus ater</i>	2	2	6	7	5	147	0	0	13	156
brown thrasher	<i>Toxostoma rufum</i>	2	2	7	7	0	0	0	0	9	9
Carolina chickadee	<i>Poecile carolinensis</i>	1	1	2	2	1	1	4	4	8	8
Carolina wren	<i>Thryothorus ludovicianus</i>	0	0	1	1	4	4	0	0	5	5
cedar waxwing	<i>Bombycilla cedrorum</i>	0	0	5	6	1	10	0	0	6	16
chipping sparrow	<i>Spizella passerina</i>	5	5	41	43	2	6	0	0	48	54
common grackle	<i>Quiscalus quiscula</i>	9	11	31	74	2	51	0	0	42	136
common yellowthroat	<i>Geothlypis trichas</i>	0	0	3	3	0	0	0	0	3	3
dickcissel	<i>Spiza americana</i>	2	2	3	4	0	0	0	0	5	6
eastern bluebird	<i>Sialia sialis</i>	3	3	12	29	8	12	4	10	27	54
eastern kingbird	<i>Tyrannus tyrannus</i>	0	0	3	3	0	0	0	0	3	3
eastern meadowlark	<i>Sturnella magna</i>	12	13	15	26	1	3	0	0	28	42
eastern phoebe	<i>Sayornis phoebe</i>	0	0	1	1	1	1	0	0	2	2
eastern towhee	<i>Pipilo erythrophthalmus</i>	0	0	1	1	0	0	0	0	1	1
eastern wood-pewee	<i>Contopus virens</i>	0	0	6	6	0	0	0	0	6	6
European starling	<i>Sturnus vulgaris</i>	13	39	53	430	33	342	41	492	140	1303
field sparrow	<i>Spizella pusilla</i>	6	6	38	39	0	0	0	0	44	45
golden-crowned kinglet	<i>Regulus satrapa</i>	0	0	1	1	0	0	0	0	1	1
grasshopper sparrow	<i>Ammodramus savannarum</i>	0	0	2	2	0	0	0	0	2	2
gray catbird	<i>Dumetella carolinensis</i>	0	0	7	7	3	4	0	0	10	11
horned lark	<i>Eremophila alpestris</i>	56	84	75	87	56	121	47	215	234	507
house finch	<i>Haemorhous mexicanus</i>	1	1	3	3	3	3	0	0	7	7
house sparrow	<i>Passer domesticus</i>	6	6	31	41	10	31	4	53	51	131
house wren	<i>Troglodytes aedon</i>	0	0	7	8	0	0	0	0	7	8
indigo bunting	<i>Passerina cyanea</i>	0	0	32	33	0	0	0	0	32	33
Lapland longspur	<i>Calcarius lapponicus</i>	0	0	0	0	0	0	1	2	1	2

Appendix A. Summary¹ of individual and group observations for all seasons by species and bird type for 10-minute fixed-point count small bird use surveys conducted at the Big Blue River Wind Project from December 3, 2015 to November 29, 2016.

Bird Species	Scientific Name	Spring		Summer		Fall		Winter		Overall	
		# grps	# obs	# grps	# obs	# grps	# obs	# grps	# obs	# grps	# obs
northern cardinal	<i>Cardinalis cardinalis</i>	24	24	30	30	2	4	9	10	65	68
northern mockingbird	<i>Mimus polyglottos</i>	2	2	4	4	0	0	0	0	6	6
northern rough-winged swallow	<i>Stelgidopteryx serripennis</i>	0	0	1	4	0	0	0	0	1	4
palm warbler	<i>Setophaga palmarum</i>	0	0	2	2	2	3	0	0	4	5
red-eyed vireo	<i>Vireo olivaceus</i>	0	0	4	4	0	0	0	0	4	4
red-winged blackbird	<i>Agelaius phoeniceus</i>	53	106	96	232	23	188	4	12	176	538
Savannah sparrow	<i>Passerculus sandwichensis</i>	2	2	6	6	1	1	0	0	9	9
song sparrow	<i>Melospiza melodia</i>	21	21	67	67	4	8	2	3	94	99
tufted titmouse	<i>Baeolophus bicolor</i>	9	9	19	19	2	2	5	5	35	35
unidentified blackbird	NA	0	0	0	0	3	351	0	0	3	351
unidentified bluebird	NA	0	0	1	1	1	300	0	0	2	301
unidentified flycatcher	NA	0	0	1	1	0	0	0	0	1	1
unidentified sparrow	NA	2	2	2	3	0	0	2	4	6	9
unidentified swallow	NA	1	2	1	1	2	15	0	0	4	18
unidentified warbler	NA	0	0	1	1	1	1	0	0	2	2
vesper sparrow	<i>Pooecetes gramineus</i>	1	1	2	2	0	0	0	0	3	3
warbling vireo	<i>Vireo gilvus</i>	0	0	4	4	0	0	0	0	4	4
white-breasted nuthatch	<i>Sitta carolinensis</i>	3	3	3	3	2	2	11	11	19	19
wood thrush	<i>Hylocichla mustelina</i>	0	0	2	2	0	0	0	0	2	2
Swifts/Hummingbirds		0	0	5	8	1	3	0	0	6	11
chimney swift	<i>Chaetura pelagica</i>	0	0	5	8	1	3	0	0	6	11
Woodpeckers		17	17	20	20	17	17	22	22	76	76
downy woodpecker	<i>Picoides pubescens</i>	0	0	1	1	4	4	1	1	6	6
northern flicker	<i>Colaptes auratus</i>	1	1	7	7	9	9	5	5	22	22
pileated woodpecker	<i>Dryocopus pileatus</i>	2	2	2	2	1	1	4	4	9	9
red-bellied woodpecker	<i>Melanerpes carolinus</i>	7	7	6	6	3	3	8	8	24	24
red-headed woodpecker	<i>Melanerpes erythrocephalus</i>	2	2	3	3	0	0	1	1	6	6
unidentified woodpecker	NA	5	5	1	1	0	0	3	3	9	9
Kingfishers		0	0	2	2	2	3	1	1	5	6
belted kingfisher	<i>Megaceryle alcyon</i>	0	0	2	2	2	3	1	1	5	6
Unidentified Birds		3	53	25	200	32	134	22	185	82	572
unidentified bird (medium)	NA	0	0	0	0	0	0	1	3	1	3
unidentified bird (small)	NA	3	53	25	200	32	134	21	182	81	569
Overall	NA	425	658	1,102	1,980	436	2,191	292	1,287	2,255	6,116

¹Regardless of distance from observer. Groups (grps); observations (obs).

Appendix B. Descriptive Statistics for the Species Recorded During the 60-minute Fixed-Point Count Large Bird Use Surveys conducted at the Big Blue River Wind Project in Henry County, Indiana, from December 3, 2015 to November 29, 2016

Appendix B. Summary¹ of individual and group observations for all seasons by species and bird type for 60-minute fixed-point count large bird use surveys conducted at Big Blue River Wind Project area from December 3, 2015 to November 29, 2016.

Bird Species	Scientific Name	Spring		Summer		Fall		Winter		Overall	
		# grps	# obs	# grps	# obs	# grps	# obs	# grps	# obs	# grps	# obs
<i>Waterbirds</i>		20	28	43	53	4	4	6	164	73	249
double-crested cormorant	<i>Phalacrocorax auritus</i>	0	0	0	0	1	1	0	0	1	1
great blue heron	<i>Ardea herodias</i>	20	28	42	51	3	3	0	0	65	82
green heron	<i>Butorides virescens</i>	0	0	1	2	0	0	0	0	1	2
sandhill crane	<i>Grus canadensis</i>	0	0	0	0	0	0	6	164	6	164
<i>Waterfowl</i>		49	148	23	90	6	197	74	1302	152	1737
blue-winged teal	<i>Anas discors</i>	1	2	0	0	0	0	0	0	1	2
Canada goose	<i>Branta canadensis</i>	27	73	10	37	6	197	48	552	91	859
canvasback	<i>Aythya valisineria</i>	1	2	0	0	0	0	0	0	1	2
mallard	<i>Anas platyrhynchos</i>	6	29	3	5	0	0	2	7	11	41
northern pintail	<i>Anas acuta</i>	0	0	0	0	0	0	1	8	1	8
snow goose	<i>Chen caerulescens</i>	0	0	0	0	0	0	1	1	1	1
unidentified duck	NA	12	38	10	48	0	0	14	286	36	372
unidentified goose	NA	0	0	0	0	0	0	5	318	5	318
unidentified waterfowl	NA	1	2	0	0	0	0	3	130	4	132
wood duck	<i>Aix sponsa</i>	1	2	0	0	0	0	0	0	1	2
<i>Shorebirds</i>		0	0	0	0	1	1	0	0	1	1
killdeer	<i>Charadrius vociferus</i>	0	0	0	0	1	1	0	0	1	1
Diurnal Raptors		78	89	118	128	95	111	147	179	438	507
<i>Accipiters</i>		7	8	9	9	9	9	9	9	34	35
Cooper's hawk	<i>Accipiter cooperii</i>	6	7	5	5	5	5	2	2	18	19
sharp-shinned hawk	<i>Accipiter striatus</i>	0	0	2	2	2	2	1	1	5	5
unidentified accipiter	<i>Accipiter spp</i>	1	1	2	2	2	2	6	6	11	11
<i>Buteos</i>		51	60	67	73	38	44	66	89	222	266
red-shouldered hawk	<i>Buteo lineatus</i>	0	0	1	2	3	3	0	0	4	5
red-tailed hawk	<i>Buteo jamaicensis</i>	44	52	66	71	28	32	48	61	186	216
unidentified buteo	<i>Buteo sp</i>	7	8	0	0	7	9	18	28	32	45
<i>Northern Harrier</i>		2	2	1	1	13	14	11	11	27	28
northern harrier	<i>Circus cyaneus</i>	2	2	1	1	13	14	11	11	27	28
<i>Eagles</i>		0	0	2	2	1	1	2	2	5	5
bald eagle	<i>Haliaeetus leucocephalus</i>	0	0	2	2	1	1	2	2	5	5

Appendix B. Summary¹ of individual and group observations for all seasons by species and bird type for 60-minute fixed-point count large bird use surveys conducted at Big Blue River Wind Project area from December 3, 2015 to November 29, 2016.

Bird Species	Scientific Name	Spring		Summer		Fall		Winter		Overall	
		# grps	# obs	# grps	# obs	# grps	# obs	# grps	# obs	# grps	# obs
<i>Falcons</i>		8	9	22	25	25	31	16	18	71	83
American kestrel	<i>Falco sparverius</i>	8	9	22	25	24	30	15	17	69	81
merlin	<i>Falco columbarius</i>	0	0	0	0	1	1	0	0	1	1
unidentified falcon	<i>Falco sp</i>	0	0	0	0	0	0	1	1	1	1
<i>Osprey</i>		0	0	1	1	0	0	0	0	1	1
osprey	<i>Pandion haliaetus</i>	0	0	1	1	0	0	0	0	1	1
<i>Other Raptors</i>		10	10	16	17	9	12	43	50	78	89
unidentified hawk	NA	2	2	7	8	2	2	1	1	12	13
unidentified raptor	NA	8	8	9	9	7	10	42	49	66	76
<i>Vultures</i>		65	102	103	176	96	234	3	3	267	515
turkey vulture	<i>Cathartes aura</i>	65	102	103	176	96	234	3	3	267	515
<i>Upland Game Birds</i>		0	0	5	5	1	1	0	0	6	6
northern bobwhite	<i>Colinus virginianus</i>	0	0	5	5	1	1	0	0	6	6
<i>Doves/Pigeons</i>		0	0	0	0	2	11	0	0	2	11
rock pigeon	<i>Columba livia</i>	0	0	0	0	2	11	0	0	2	11
<i>Large Corvids</i>		0	0	0	0	4	26	3	13	7	39
American crow	<i>Corvus brachyrhynchos</i>	0	0	0	0	4	26	3	13	7	39
<i>Woodpeckers</i>		0	0	0	0	1	1	1	1	2	2
northern flicker	<i>Colaptes auratus</i>	0	0	0	0	1	1	0	0	1	1
pileated woodpecker	<i>Dryocopus pileatus</i>	0	0	0	0	0	0	1	1	1	1
Overall		212	367	292	452	210	586	234	1,662	948	3,067

¹Regardless of distance from observer. Groups (grps); observations (obs).

Appendix C. North American Fatality Summary Table

Appendix C. All bird and raptor mortality estimates (birds per megawatt [MW] per year) and habitat types for North American wind energy facilities.

Project	All Bird Mortalities (birds/MW/ year)	Raptor Mortalities (raptors/MW/ year)	Predominant Habitat Type	Citation
Alite, CA (2009-2010)	0.55	0.12	Shrub/scrub & grassland	Chatfield et al. 2010b
Alta Wind I, CA (2011-2012)	7.07	0.27	Woodland, grassland, shrubland	Chatfield et al. 2012
Alta Wind I-V, CA (2013-2014)	7.8	0.08	NA	Chatfield et al. 2014
Alta Wind II-V, CA (2011-2012)	1.66	0.05	Desert scrub	Chatfield et al. 2012
Alta VIII, CA (2012-2013)	0.66	0.02	Grassland and riparian	Chatfield and Bay 2014
Barton I & II, IA (2010-2011)	5.5	0	Agriculture	Derby et al. 2011a
Barton Chapel, TX (2009-2010)	1.15	0.25	Agriculture/forest	WEST 2011
Beech Ridge, WV (2012)	1.19	0.01	Forest	Tidhar et al. 2013b
Beech Ridge, WV (2013)	1.48	0.01	Forest	Young et al. 2014b
Big Blue, MN (2013)	0.6	0	Agriculture	Fagen Engineering 2014
Big Blue, MN (2014)	0.37	0	Agriculture	Fagen Engineering 2015
Big Horn, WA (2006-2007)	2.54	0.11	Agriculture/grassland	Kronner et al. 2008
Big Smile, OK (2012-2013)	0.09	0	Grassland, agriculture	Derby et al. 2013b
Biglow Canyon, OR (Phase I; 2008)	1.76	0.03	Agriculture/grassland	Jeffrey et al. 2009a
Biglow Canyon, OR (Phase I; 2009)	2.47	0	Agriculture/grassland	Enk et al. 2010
Biglow Canyon, OR (Phase II; 2009-2010)	5.53	0.14	Agriculture	Enk et al. 2011a
Biglow Canyon, OR (Phase II; 2010-2011)	2.68	0.03	Grassland/shrub-steppe, agriculture	Enk et al. 2012b
Biglow Canyon, OR (Phase III; 2010-2011)	2.28	0.05	Grassland/shrub-steppe, agriculture	Enk et al. 2012a
Blue Sky Green Field, WI (2008; 2009)	7.17	0	Agriculture	Gruver et al. 2009
Buffalo Gap I, TX (2006)	1.32	0.1	Grassland	Tierney 2007
Buffalo Gap II, TX (2007-2008)	0.15	0	Forest	Tierney 2009
Buffalo Mountain, TN (2000-2003)	11.02	0	Forest	Nicholson et al. 2005
Buffalo Mountain, TN (2005)	1.1	0	Forest	Fiedler et al. 2007
Buffalo Ridge, MN (Phase I; 1996)	4.14	0	Agriculture	Johnson et al. 2000a
Buffalo Ridge, MN (Phase I; 1997)	2.51	0	Agriculture	Johnson et al. 2000a
Buffalo Ridge, MN (Phase I; 1998)	3.14	0	Agriculture	Johnson et al. 2000a
Buffalo Ridge, MN (Phase I; 1999)	1.43	0.47	Agriculture	Johnson et al. 2000a
Buffalo Ridge, MN (Phase II; 1998)	2.47	0	Agriculture	Johnson et al. 2000a
Buffalo Ridge, MN (Phase II; 1999)	3.57	0	Agriculture	Johnson et al. 2000a
Buffalo Ridge, MN (Phase III; 1999)	5.93	0	Agriculture	Johnson et al. 2000a
Buffalo Ridge I, SD (2009-2010)	5.06	0.2	Agriculture/grassland	Derby et al. 2010c
Buffalo Ridge II, SD (2011-2012)	1.99	0	Agriculture, grassland	Derby et al. 2012a
Casselman, PA (2008)	1.51	0	Forest	Arnett et al. 2009b
Casselman, PA (2009)	2.88	0	Forest, pasture, grassland	Arnett et al. 2010

Appendix C. All bird and raptor mortality estimates (birds per megawatt [MW] per year) and habitat types for North American wind energy facilities.

Project	All Bird Mortalities (birds/MW/year)	Raptor Mortalities (raptors/MW/year)	Predominant Habitat Type	Citation
Cedar Ridge, WI (2009)	6.55	0.18	Agriculture	BHE Environmental 2010
Cedar Ridge, WI (2010)	3.72	0.13	Agriculture	BHE Environmental 2011
Cohocton/Dutch Hill, NY (2009)	1.39	0	Agriculture/forest	Stantec 2010
Cohocton/Dutch Hills, NY (2010)	1.32	0.08	Agriculture, forest	Stantec 2011a
Combine Hills, OR (Phase I; 2004-2005)	2.56	0	Agriculture/grassland	Young et al. 2006
Combine Hills, OR (2011)	2.33	0.05	Grassland/shrub-steppe, agriculture	Enz et al. 2012
Criterion, MD (2011)	6.4	0.02	Forest, agriculture	Young et al. 2012a
Criterion, MD (2012)	2.14	NA	Forest, agriculture	Young et al. 2013
Criterion, MD (2013)	3.49	NA	Forest, agriculture	Young et al. 2014a
Diablo Winds, CA (2005-2007)	4.29	0.4	NA	WEST 2006, 2008
Dillon, CA (2008-2009)	4.71	0	Desert	Chatfield et al. 2009
Dry Lake I, AZ (2009-2010)	2.02	0	Desert grassland/forested	Thompson et al. 2011
Dry Lake II, AZ (2011-2012)	1.57	0	Desert grassland/forested	Thompson and Bay 2012
Elkhorn, OR (2008)	0.64	0.06	Shrub/scrub & agriculture	Jeffrey et al. 2009b
Elkhorn, OR (2010)	1.95	0.08	Shrub/scrub & agriculture	Enk et al. 2011b
Elm Creek, MN (2009-2010)	1.55	0	Agriculture	Derby et al. 2010d
Elm Creek II, MN (2011-2012)	3.64	0	Agriculture, grassland	Derby et al. 2012b
Foot Creek Rim, WY (Phase I; 1999)	3.4	0.08	Grassland	Young et al. 2003c
Foot Creek Rim, WY (Phase I; 2000)	2.42	0.05	Grassland	Young et al. 2003c
Foot Creek Rim, WY (Phase I; 2001-02)	1.93	0	Grassland	Young et al. 2003c
Fowler I, IN (2009)	2.83	0	Agriculture	Johnson et al. 2010a
Goodnoe, WA (2009-2010)	1.4	0.17	Grassland and shrub-steppe	URS Corporation 2010a
Grand Ridge I, IL (2009-2010)	0.48	0	Agriculture	Derby et al. 2010h
Harvest Wind, WA (2010-2012)	2.94	0.23	Grassland/shrub-steppe	Downes and Gritski 2012a
Hay Canyon, OR (2009-2010)	2.21	0	Agriculture	Gritski and Kronner 2010a
High Sheldon, NY (2010)	1.76	0.06	Agriculture	Tidhar et al. 2012a
High Sheldon, NY (2011)	1.57	0	Agriculture	Tidhar et al. 2012b
High Winds, CA (2003-2004)	1.62	0.5	Agriculture/grassland	Kerlinger et al. 2006
High Winds, CA (2004-2005)	1.1	0.28	Agriculture/grassland	Kerlinger et al. 2006
Hopkins Ridge, WA (2006)	1.23	0.14	Agriculture/grassland	Young et al. 2007a
Hopkins Ridge, WA (2008)	2.99	0.07	Agriculture/grassland	Young et al. 2009c
Kewaunee County, WI (1999-2001)	1.95	0	Agriculture	Howe et al. 2002
Kittitas Valley, WA (2011-2012)	1.06	0.09	Sagebrush-steppe, grassland	Stantec Consulting Services 2012

Appendix C. All bird and raptor mortality estimates (birds per megawatt [MW] per year) and habitat types for North American wind energy facilities.

Project	All Bird Mortalities (birds/MW/year)	Raptor Mortalities (raptors/MW/year)	Predominant Habitat Type	Citation
Klondike, OR (2002-2003)	0.95	0	Agriculture/grassland	Johnson et al. 2003
Klondike II, OR (2005-2006)	3.14	0.06	Agriculture/grassland	NWC and WEST 2007
Klondike III (Phase I), OR (2007-2009)	3.02	0.15	Agriculture/grassland	Gritski et al. 2010
Klondike IIIa (Phase II), OR (2008-2010)	2.61	0.06	Grassland/shrub-steppe and agriculture	Gritski et al. 2011
Leaning Juniper, OR (2006-2008)	6.66	0.16	Agriculture	Gritski et al. 2008
Lempster, NH (2009)	3.38	0	Grasslands/forest/rocky embankments	Tidhar et al. 2010
Lempster, NH (2010)	2.64	0	Grasslands/forest/rocky embankments	Tidhar et al. 2011
Linden Ranch, WA (2010-2011)	6.65	0.27	Grassland/shrub-steppe, agriculture	Enz and Bay 2011
Locust Ridge, PA (Phase II; 2009)	0.84	0	Grassland	Arnett et al. 2011
Locust Ridge, PA (Phase II; 2010)	0.76	0	Grassland	Arnett et al. 2011
Maple Ridge, NY (2007)	2.34	NA	Agriculture/forested	Jain et al. 2009a
Maple Ridge, NY (2007-2008)	2.07	0.03	Agriculture/forested	Jain et al. 2009d
Marengo I, WA (2009-2010)	0.27	0	Agriculture	URS Corporation 2010b
Marengo II, WA (2009-2010)	0.16	0.05	Agriculture	URS Corporation 2010c
Mars Hill, ME (2007)	1.67	0	Forest	Stantec 2008
Mars Hill, ME (2008)	1.76	0	Forest	Stantec 2009a
Milford I, UT (2010-2011)	0.56	NA	Desert shrub	Stantec 2011b
Milford I & II, UT (2011-2012)	0.73	0.04	Desert shrub	Stantec 2012b
Montezuma I, CA (2011)	5.19	1.06	Agriculture and grasslands	ICF International 2012
Montezuma I, CA (2012)	8.91	0.79	Agriculture and grasslands	ICF International 2013
Montezuma II, CA (2012-2013)	1.08	0.46	Agriculture	Harvey & Associates 2013
Moraine II, MN (2009)	5.59	0.37	Agriculture/grassland	Derby et al. 2010e
Mount Storm, WV (2009)	3.85	0	Forest	Young et al. 2009a, 2010b
Mount Storm, WV (2010)	2.6	0.1	Forest	Young et al. 2010a, 2011b
Mount Storm, WV (2011)	4.24	0.03	Forest	Young et al. 2011a, 2012b
Mountaineer, WV (2003)	2.69	0.07	Forest	Kerns and Kerlinger 2004
Munnsville, NY (2008)	1.48	0.59	Agriculture/forest	Stantec 2009b
Mustang Hills, CA (2012-2013)	1.66	0.08	Grasslands and riparian	Chatfield and Bay 2014
Nine Canyon, WA (2002-2003)	2.76	0.03	Agriculture/grassland	Erickson et al. 2003c
Noble Altona, NY (2010)	1.84	0	Forest	Jain et al. 2011b
Noble Bliss, NY (2008)	1.3	0.1	Agriculture/forest	Jain et al. 2009e
Noble Bliss, NY (2009)	2.28	0.12	Agriculture/forest	Jain et al. 2010a
Noble Chateaugay, NY (2010)	1.66	0.08	Agriculture	Jain et al. 2011c

Appendix C. All bird and raptor mortality estimates (birds per megawatt [MW] per year) and habitat types for North American wind energy facilities.

Project	All Bird Mortalities (birds/MW/year)	Raptor Mortalities (raptors/MW/year)	Predominant Habitat Type	Citation
Noble Clinton, NY (2008)	1.59	0.1	Agriculture/forest	Jain et al. 2009c
Noble Clinton, NY (2009)	1.11	0.16	Agriculture/forest	Jain et al. 2010b
Noble Ellenburg, NY (2008)	0.83	0.11	Agriculture/forest	Jain et al. 2009b
Noble Ellenburg, NY (2009)	2.66	0.25	Agriculture/forest	Jain et al. 2010c
Noble Wethersfield, NY (2010)	1.7	0.13	Agriculture	Jain et al. 2011a
NPPD Ainsworth, NE (2006)	1.63	0.06	Agriculture/grassland	Derby et al. 2007
Palouse Wind, WA (2012-2013)	0.72	NA	Agriculture and grasslands	Stantec 2013a
Pebble Springs, OR (2009-2010)	1.93	0.04	Grassland	Gritski and Kronner 2010b
Pine Tree, CA (2009-2010, 2011)	17.44	NA	Grassland	BioResource Consultants 2012
Pinnacle, WV (2012)	3.99	0	Forest	Hein et al. 2013
Pinyon Pines I & II, CA (2013-2014)	1.18	NA	NA	Chatfield and Russo 2014
Pioneer Prairie I, IA (Phase II; 2011-2012)	0.27	0	Agriculture, grassland	Chodachek et al. 2012
PrairieWinds ND1 (Minot), ND (2010)	1.48	0.05	Agriculture	Derby et al. 2011c
PrairieWinds ND1 (Minot), ND (2011)	1.56	0.05	Agriculture, grassland	Derby et al. 2012c
PrairieWinds SD1, SD (2011-2012)	1.41	0	Grassland	Derby et al. 2012d
PrairieWinds SD1, SD (2012-2013)	2.01	0.03	Grassland	Derby et al. 2013a
PrairieWinds SD1, SD (2013-2014)	1.66	0.17	Grassland	Derby et al. 2014
Rail Splitter, IL (2012-2013)	0.84	0	Agriculture	Good et al. 2013b
Record Hill, ME (2012)	3.7	NA	Forest	Stantec 2013b
Record Hill, ME (2014)	1.84	NA	Forest	Stantec 2015
Red Hills, OK (2012-2013)	0.08	0.04	Grassland	Derby et al. 2013c
Ripley, Ont (2008)	3.09	0.1	Agriculture	Jacques Whitford 2009
Rollins, ME (2012)	2.9	NA	Forest	Stantec 2013c
Rugby, ND (2010-2011)	3.82	0.06	Agriculture	Derby et al. 2011b
Shiloh I, CA (2006-2009)	6.96	0.42	Agriculture/grassland	Kerlinger et al. 2009
Shiloh II, CA (2009-2010)	1.9	0.11	Agriculture	Kerlinger et al. 2010, 2013a
Shiloh II, CA (2010-2011)	2.8	0.44	Agriculture	Kerlinger et al. 2013a
Shiloh III, CA (2012-2013)	3.3	NA	NA	Kerlinger et al. 2013b
Solano III, CA (2012-2013)	1.6	0.95	NA	AECOM 2013
Stateline, OR/WA (2001-2002)	3.17	0.09	Agriculture/grassland	Erickson et al. 2004
Stateline, OR/WA (2003)	2.68	0.09	Agriculture/grassland	Erickson et al. 2004
Stateline, OR/WA (2006)	1.23	0.11	Agriculture/grassland	Erickson et al. 2007
Stetson Mountain I, ME (2009)	2.68	0	Forest	Stantec 2009c
Stetson Mountain I, ME (2011)	1.18	0	Forest	Normandeau Associates 2011

Appendix C. All bird and raptor mortality estimates (birds per megawatt [MW] per year) and habitat types for North American wind energy facilities.

Project	All Bird Mortalities (birds/MW/year)	Raptor Mortalities (raptors/MW/year)	Predominant Habitat Type	Citation
Stetson Mountain I, ME (2013)	6.95	0	Forest	Stantec 2014
Stetson Mountain II, ME (2010)	1.42	0	Forest	Normandeau Associates 2010
Stetson Mountain II, ME (2012)	3.37	0	Forest	Stantec 2013e
Summerview, Alb (2005-2006)	1.06	0.11	Agriculture	Brown and Hamilton 2006b
Top Crop I & II (2012-2013)	0.6	NA	Agriculture	Good et al. 2013a
Top of Iowa, IA (2003)	0.42	0	Agriculture	Jain 2005
Top of Iowa, IA (2004)	0.81	0.17	Agriculture	Jain 2005
Tuolumne (Windy Point I), WA (2009-2010)	3.2	0.29	Grassland/shrub-steppe, agriculture and forest	Enz and Bay 2010
Vansycle, OR (1999)	0.95	0	Agriculture/grassland	Erickson et al. 2000
Vantage, WA (2010-2011)	1.27	0.29	Shrub-steppe, grassland	Ventus Environmental Solutions 2012
Wessington Springs, SD (2009)	8.25	0.06	Grassland	Derby et al. 2010g
Wessington Springs, SD (2010)	0.89	0.07	Grassland	Derby et al. 2011d
White Creek, WA (2007-2011)	4.05	0.47	Grassland/shrub-steppe, agriculture	Downes and Gritski 2012b
Wild Horse, WA (2007)	1.55	0.09	Grassland	Erickson et al. 2008
Windy Flats, WA (2010-2011)	8.45	0.04	Grassland/shrub-steppe, agriculture	Enz et al. 2011
Winnebago, IA (2009-2010)	3.88	0.27	Agriculture/grassland	Derby et al. 2010f

**Appendix D. Studies at North American Wind Energy Facilities that have Reported
Species Composition of Bird Fatalities**

Appendix D. Summary of publicly available studies at modern North American wind energy facilities that report fatality and species data for birds.

Data from the following sources:

Project, Location	Reference	Project, Location	Reference
Alite, CA (09-10)	Chatfield et al. 2010b	Maple Ridge, NY (07-08)	Jain et al. 2009d
Alta Wind I, CA (11-12)	Chatfield et al. 2012	Maple Ridge, NY (12)	Tidhar et al. 2013a
Alta Wind I-V, CA (13-14)	Chatfield et al. 2014	Marengo I, WA (09-10)	URS Corporation 2010b
Alta Wind II-V, CA (11-12)	Chatfield et al. 2012	Marengo II, WA (09-10)	URS Corporation 2010c
Alta VIII, CA (12-13)	Chatfield and Bay 2014	Mars Hill, ME (07)	Stantec 2008
Barton I & II, IA (10-11)	Derby et al. 2011a	Mars Hill, ME (08)	Stantec 2009a
Barton Chapel, TX (09-10)	WEST 2011	McBride, Alb (04)	Brown and Hamilton 2004
Beech Ridge, WV (12)	Tidhar et al. 2013b	Melancthon, Ont (Phase I; 07)	Stantec Ltd. 2008
Beech Ridge, WV (13)	Young et al. 2014b	Meyersdale, PA (04)	Arnett et al. 2005
Big Blue, MN (13)	Fagen Engineering 2014	Milford I, UT (10-11)	Stantec 2011b
Big Blue, MN (14)	Fagen Engineering 2015	Milford I & II, UT (11-12)	Stantec 2012b
Big Horn, WA (06-07)	Kronner et al. 2008	Montezuma I, CA (11)	ICF International 2012
Big Smile, OK (12-13)	Derby et al. 2013b	Montezuma I, CA (12)	ICF International 2013
Biglow Canyon, OR (Phase I; 08)	Jeffrey et al. 2009a	Montezuma II, CA (12-13)	Harvey & Associates 2013
Biglow Canyon, OR (Phase I; 09)	Enk et al. 2010	Moraine II, MN (09)	Derby et al. 2010e
Biglow Canyon, OR (Phase II; 09-10)	Enk et al. 2011a	Mount Storm, WV (Fall 08)	Young et al. 2009b
Biglow Canyon, OR (Phase II; 10-11)	Enk et al. 2012b	Mount Storm, WV (09)	Young et al. 2009a, 2010b
Biglow Canyon, OR (Phase III; 10-11)	Enk et al. 2012a	Mount Storm, WV (10)	Young et al. 2010a, 2011b
Blue Sky Green Field, WI (08; 09)	Gruver et al. 2009	Mount Storm, WV (11)	Young et al. 2011a, 2012b
	Insignia Environmental 2009		
Buena Vista, CA (08-09)	Tierney 2007	Mountaineer, WV (03)	Kerns and Kerlinger 2004
Buffalo Gap I, TX (06)	Tierney 2009	Mountaineer, WV (04)	Arnett et al. 2005
Buffalo Gap II, TX (07-08)	Nicholson et al. 2005	Munnsville, NY (08)	Stantec 2009b
Buffalo Mountain, TN (00-03)	Fiedler et al. 2007	Mustang Hills, CA (12-13)	Chatfield and Bay 2014
Buffalo Mountain, TN (05)	Osborn et al. 1996, 2000	Nine Canyon, WA (02-03)	Erickson et al. 2003c
Buffalo Ridge, MN (94-95)	Krenz and McMillan 2000	Nine Canyon II, WA (04)	Erickson et al. 2005
Buffalo Ridge, MN (00)	Johnson et al. 2000a	Noble Altona, NY (10)	Jain et al. 2011b
Buffalo Ridge, MN (Phase I; 96)	Johnson et al. 2000a	Noble Altona, NY (11)	Kerlinger et al. 2011b
Buffalo Ridge, MN (Phase I; 97)	Johnson et al. 2000a	Noble Bliss, NY (08)	Jain et al. 2009e
Buffalo Ridge, MN (Phase I; 98)	Johnson et al. 2000a	Noble Bliss, NY (09)	Jain et al. 2010a
Buffalo Ridge, MN (Phase I; 99)	Johnson et al. 2000a	Noble Bliss/Wethersfield, NY (11)	Kerlinger et al. 2011a
Buffalo Ridge, MN (Phase II; 98)	Johnson et al. 2000a	Noble Chateaugay, NY (10)	Jain et al. 2011c
Buffalo Ridge, MN (Phase II; 99)	Johnson et al. 2000a	Noble Clinton, NY (08)	Jain et al. 2009c
Buffalo Ridge, MN (Phase II; 01/Lake Benton I)	Johnson et al. 2004	Noble Clinton, NY (09)	Jain et al. 2010b
Buffalo Ridge, MN (Phase II; 02/Lake Benton I)	Johnson et al. 2004	Noble Ellenburg, NY (08)	Jain et al. 2009b
Buffalo Ridge, MN (Phase III; 99)	Johnson et al. 2000a	Noble Ellenburg, NY (09)	Jain et al. 2010c
Buffalo Ridge, MN (Phase III; 01/Lake Benton II)	Johnson et al. 2004	Noble Wethersfield, NY (10)	Jain et al. 2011a
Buffalo Ridge, MN (Phase III; 02/Lake Benton II)	Johnson et al. 2004	NPPD Ainsworth, NE (06)	Derby et al. 2007
		Oklahoma Wind Energy Center, OK (04; 05)	Piorkowski and O'Connell 2010
Buffalo Ridge I, SD (09-10)	Derby et al. 2010c	Pacific, CA (12-13)	Sapphos 2014
Buffalo Ridge II, SD (11-12)	Derby et al. 2012a	Palouse Wind, WA (12-13)	Stantec 2013a
Casselman, PA (08)	Arnett et al. 2009a	Pebble Springs, OR (09-10)	Gritski and Kronner 2010b
Casselman, PA (09)	Arnett et al. 2010	Pine Tree, CA (09-10)	BioResource Consultants 2010
Castle River, Alb. (01)	Brown and Hamilton 2006a	Pinnacle, WV (12)	Hein et al. 2013
Castle River, Alb. (02)	Brown and Hamilton 2006a	Pinyon Pines I & II, CA (13-14)	Chatfield and Russo 2014
Cedar Ridge, WI (09)	BHE Environmental 2010	Pioneer Prairie I, IA (Phase II; 11-12)	Chodachek et al. 2012
Cedar Ridge, WI (10)	BHE Environmental 2011	Pioneer Prairie II, IA (13)	Chodachek et al. 2014
Cohocton/Dutch Hill, NY (09)	Stantec 2010	Pioneer Trail, IL (12-13)	ARCADIS U.S. 2013
Cohocton/Dutch Hills, NY (10)	Stantec 2011a	Prairie Rose, MN (14)	Chodachek et al. 2015
Combine Hills, OR (Phase I; 04-05)	Young et al. 2006	PrairieWinds ND1 (Minot), ND (10)	Derby et al. 2011c
Combine Hills, OR (11)	Enz et al. 2012		
	Fishman Ecological Services 2003	PrairieWinds ND1 (Minot), ND (11)	Derby et al. 2012c
Condon, OR		PrairieWinds SD1 (Crow Lake), SD (11-12)	Derby et al. 2012d
Crescent Ridge, IL (05-06)	Kerlinger et al. 2007	PrairieWinds SD1 (Crow Lake), SD (12-13)	Derby et al. 2013a
Criterion, MD (11)	Young et al. 2012a	PrairieWinds SD1 (Crow Lake), SD (13-14)	Derby et al. 2014
Criterion, MD (12)	Young et al. 2013	Rail Splitter, IL (12-13)	Good et al. 2013b
Criterion, MD (13)	Young et al. 2014a	Record Hill, ME (12)	Stantec 2013b
Crystal Lake II, IA (09)	Derby et al. 2010b	Record Hill, ME (14)	Stantec 2015
Diablo Winds, CA (05-07)	WEST 2006, 2008	Red Canyon, TX (06-07)	Miller 2008
Dillon, CA (08-09)	Chatfield et al. 2009	Red Hills, OK (12-13)	Derby et al. 2013c
Dry Lake I, AZ (09-10)	Thompson et al. 2011	Ripley, Ont (08)	Jacques Whitford 2009
Dry Lake II, AZ (11-12)	Thompson and Bay 2012	Ripley, Ont (08-09)	Golder Associates 2010
Elkhorn, OR (08)	Jeffrey et al. 2009b	Rollins, ME (12)	Stantec 2013c
Elkhorn, OR (10)	Enk et al. 2011b	Rugby, ND (10-11)	Derby et al. 2011b
Elm Creek, MN (09-10)	Derby et al. 2010d	Searsburg, VT (97)	Kerlinger 2002a
Elm Creek II, MN (11-12)	Derby et al. 2012b	Sheffield, VT (12)	Martin et al. 2013
Foote Creek Rim, WY (Phase I; 99)	Young et al. 2003c	Shiloh I, CA (06-09)	Kerlinger et al. 2009
Foote Creek Rim, WY (Phase I; 00)	Young et al. 2003c	Shiloh II, CA (09-10)	Kerlinger et al. 2010
Foote Creek Rim, WY (Phase I; 01-02)	Young et al. 2003c	Shiloh II, CA (10-11)	Kerlinger et al. 2013a
Forward Energy Center, WI (08-10)	Grodsky and Drake 2011		

Appendix D. Summary of publicly available studies at modern North American wind energy facilities that report fatality and species data for birds.

Data from the following sources:

Project, Location	Reference	Project, Location	Reference
Fowler I, IN (09)	Johnson et al. 2010a	Shiloh III, CA (12-13)	Kerlinger et al. 2013b
Fowler III, IN (09)	Johnson et al. 2010b	SMUD Solano, CA (04-05)	Erickson and Sharp 2005
Fowler I, II, III, IN (10)	Good et al. 2011	Solano III, CA (12-13)	AECOM 2013
Fowler I, II, III, IN (11)	Good et al. 2012	Spruce Mountain, ME (12)	Tetra Tech 2013
Fowler I, II, III, IN (12)	Good et al. 2013c	Stateline, OR/WA (01-02)	Erickson et al. 2004
Goodnoe, WA (09-10)	URS Corporation 2010a	Stateline, OR/WA (03)	Erickson et al. 2004
Grand Ridge I, IL (09-10)	Derby et al. 2010h	Stateline, OR/WA (06)	Erickson et al. 2007
	Natural Resource Solutions 2011	Steel Winds I, NY	Grehan 2008
Harrow, Ont (10)		Steel Winds I & II, NY (12)	Stantec 2013d
Harvest Wind, WA (10-12)	Downes and Gritski 2012a	Stetson Mountain I, ME (09)	Stantec 2009c
Hay Canyon, OR (09-10)	Gritski and Kronner 2010a	Stetson Mountain I, ME (11)	Normandeu Associates 2011
Heritage Garden I, MI (12-14)	Kerlinger et al. 2014	Stetson Mountain I, ME (13)	Stantec 2014
High Sheldon, NY (10)	Tidhar et al. 2012a	Stetson Mountain II, ME (10)	Normandeu Associates 2010
High Sheldon, NY (11)	Tidhar et al. 2012b	Stetson Mountain II, ME (12)	Stantec 2013e
High Winds, CA (03-04)	Kerlinger et al. 2006	Summerview, Alb (05-06)	Brown and Hamilton 2006b
High Winds, CA (04-05)	Kerlinger et al. 2006	Summerview, Alb (06; 07)	Baerwald 2008
Hopkins Ridge, WA (06)	Young et al. 2007a	Top Crop I & II, IL (12-13)	Good et al. 2013a
Hopkins Ridge, WA (08)	Young et al. 2009c	Top of Iowa, IA (03)	Jain 2005
Jersey Atlantic, NJ (08)	NJAS 2008a, 2008b, 2009	Top of Iowa, IA (04)	Jain 2005
Judith Gap, MT (06-07)	TRC 2008	Tuolumne (Windy Point I), WA (09-10)	Enz and Bay 2010
Judith Gap, MT (09)	Poulton and Erickson 2010	Vansycle, OR (99)	Erickson et al. 2000
Kewaunee County, WI (99-01)	Howe et al. 2002	Vantage, WA (10-11)	Ventus Environmental Solutions 2012
Kibby, ME (11)	Stantec 2012a	Vasco, CA (12-13)	Brown et al. 2013
Kittitas Valley, WA (11-12)	Stantec Consulting 2012	Wessington Springs, SD (09)	Derby et al. 2010g
Kittitas Valley, WA (12-13)	Stantec Consulting 2013	Wessington Springs, SD (10)	Derby et al. 2011d
Klondike, OR (02-03)	Johnson et al. 2003	White Creek, WA (07-11)	Downes and Gritski 2012b
Klondike II, OR (05-06)	NWC and WEST 2007	Wild Horse, WA (07)	Erickson et al. 2008
Klondike III (Phase I), OR (07-09)	Gritski et al. 2010	Windy Flats, WA (10-11)	Enz et al. 2011
Klondike IIIa (Phase II), OR (08-10)	Gritski et al. 2011	Winnebago, IA (09-10)	Derby et al. 2010f
Leaning Juniper, OR (06-08)	Gritski et al. 2008	Wolfe Island, Ont (May-June 09)	Stantec Ltd. 2010a
Lempster, NH (09)	Tidhar et al. 2010	Wolfe Island, Ont (July-December 09)	Stantec Ltd. 2010b
Lempster, NH (10)	Tidhar et al. 2011	Wolfe Island, Ont (January-June 10)	Stantec Ltd. 2011a
Linden Ranch, WA (10-11)	Enz and Bay 2011	Wolfe Island, Ont (July-December 10)	Stantec Ltd. 2011b
Locust Ridge, PA (Phase II; 09)	Arnett et al. 2011	Wolfe Island, Ont (January-June 11)	Stantec Ltd. 2011c
Locust Ridge, PA (Phase II; 10)	Arnett et al. 2011	Wolfe Island, Ont (July-December 11)	Stantec Ltd. 2012
Madison, NY (01-02)	Kerlinger 2002b	Wolfe Island, Ont (January-June 12)	Stantec Ltd. 2014
Maple Ridge, NY (06)	Jain et al. 2007		
Maple Ridge, NY (07)	Jain et al. 2009a		